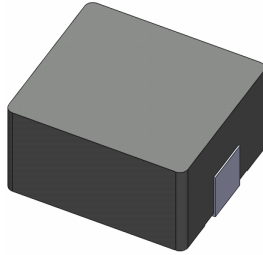


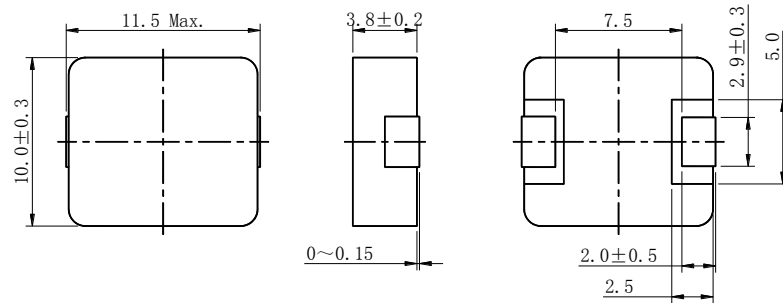
# SMD Power Inductor 104CDMCC/DS



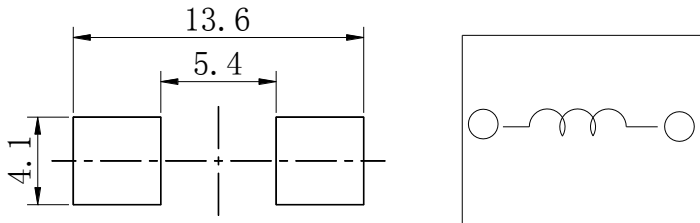
Halogen  
Free



## Dimension - [mm]



## Land pattern and Schematics - [mm]



## Description

- Metal compound molding type construction.
- Magnetically shielded.
- Low audible core noise.
- Suitable for large current.
- L × W × H: 11.5 × 10.3 × 4.0 mm Max.
- Product weight: 2.2 g (Ref.)
- Moisture Sensitivity Level: 1
- RoHS compliance.
- Halogen Free available.

## Environmental Data

- Operating temperature range: -55°C ~ +125°C (including coil's self temperature rise)
- Storage temperature range: -55°C ~ +125°C
- Solder reflow temperature: 260 °C peak.

## Packaging

- Carrier tape and reel packaging.
- 500pcs per reel.

## Applications

- Ideally used in notebook, ultrabook, tablet PC, LCD display, Server application.
- High current, POL converters.
- Low profile, high current power supplies.
- Battery powered devices.
- DC/DC converters in distributed power systems.



### Electrical Characteristics

Part No.	Stamp	Inductance [Within] ( $\mu$ H) ※1	D.C.R (m $\Omega$ ) Max.(Typ.) at 25°C	Saturation Current (A) Max.(Typ.) (at 25°C) ※2	Temperature rise current (A) (Typ.) ※3
104CDMCCDS-R15MC	R15	0.15 $\pm$ 20%	0.65(0.5)	60(71)	43.0
104CDMCCDS-R22MC	R22	0.22 $\pm$ 20%	0.7(0.6)	59(70)	38.0
104CDMCCDS-R30MC	R30	0.30 $\pm$ 20%	0.90(0.78)	44(52)	35.0
104CDMCCDS-R36MC	R36	0.36 $\pm$ 20%	1.06(0.92)	44(52)	32.0
104CDMCCDS-R47MC	R47	0.47 $\pm$ 20%	1.7(1.5)	43(51)	28.0
104CDMCCDS-R56MC	R56	0.56 $\pm$ 20%	1.65(1.43)	34(40)	27.0
104CDMCCDS-R68MC	R68	0.68 $\pm$ 20%	2.25(1.95)	33(39)	23.5
104CDMCCDS-R80MC	R80	0.80 $\pm$ 20%	2.42(2.10)	27(32)	23.0
104CDMCCDS-1R0MC	1R0	1.0 $\pm$ 20%	3.05(2.65)	26(31)	19.5
104CDMCCDS-1R5MC	1R5	1.5 $\pm$ 20%	3.8(3.3)	24(29)	19.0
104CDMCCDS-2R2MC	2R2	2.2 $\pm$ 20%	7.0(6.0)	18(21)	15.0
104CDMCCDS-3R3MC	3R3	3.3 $\pm$ 20%	12.0(10.0)	16(18)	12.0
104CDMCCDS-4R7MC	4R7	4.7 $\pm$ 20%	14.8(12.8)	14(16)	11.0
104CDMCCDS-6R8MC	6R8	6.8 $\pm$ 20%	25.0(22.0)	11.0(12.5)	8.5
104CDMCCDS-8R2MC	8R2	8.2 $\pm$ 20%	27.0(25.0)	10.0(12.0)	8.3
104CDMCCDS-100MC	100	10 $\pm$ 20%	30.0(27.0)	8.5(10.0)	7.5
104CDMCCDS-150MC	150	15 $\pm$ 20%	45.0(40.0)	6.1(7.2)	6.3
104CDMCCDS-220MC	220	22 $\pm$ 20%	66.0(58.0)	5.5(6.5)	5.0
104CDMCCDS-330MC	330	33 $\pm$ 20%	92.0(85.0)	4.4(5.2)	4.1
104CDMCCDS-470MC	470	47 $\pm$ 20%	145(130)	3.6(4.3)	3.2
104CDMCCDS-680MC	680	68 $\pm$ 20%	195(178)	3.4(4.0)	2.5

※1 Measuring frequency Inductance at 100kHz ,1.0V

※2 Saturation current: The value of DC current when the inductance is over 30% of its initial value. (at 25°C )

※3 Temperature rise current: The actual value of DC current when temperature of coil rise is

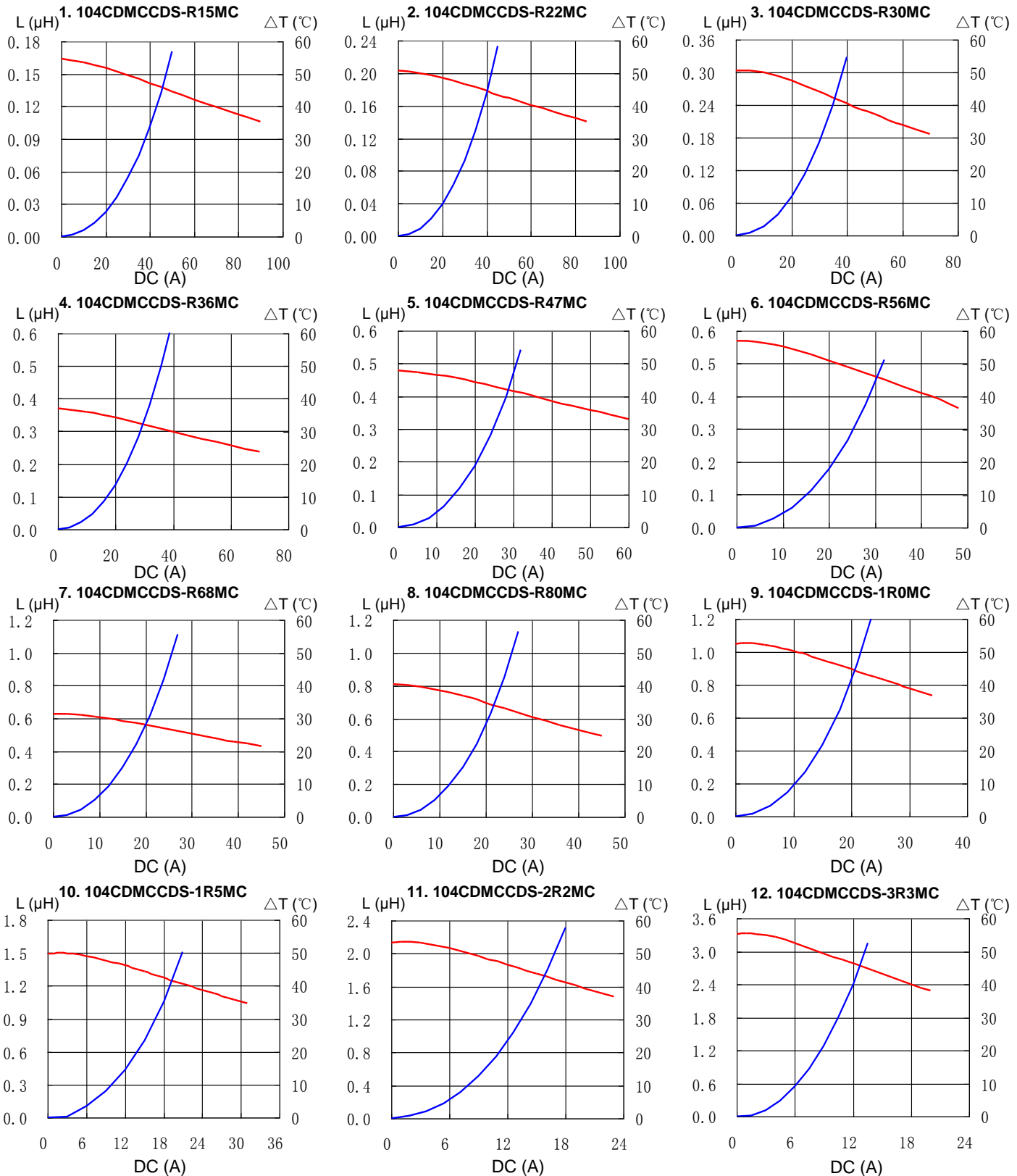
$\Delta$ T=40°C(Ta=25°C)

# SMD Power Inductor 104CDMCC/DS



## Saturation Current & Temperature Rise Graph

— L (20°C) —  $\Delta T$

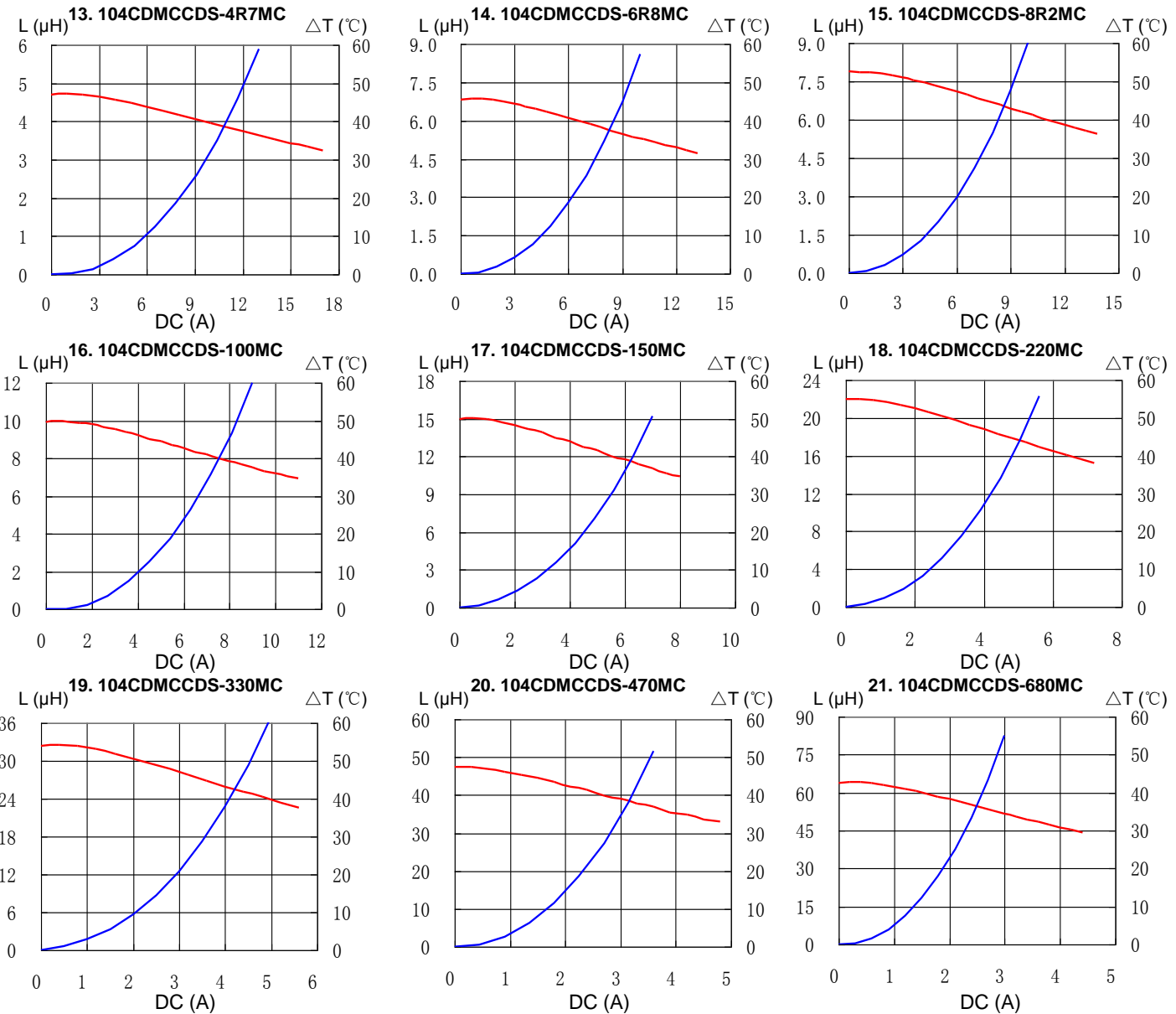


# SMD Power Inductor 104CDMCC/DS



## Saturation Current & Temperature Rise Graph

— L (20°C)    —  $\Delta T$

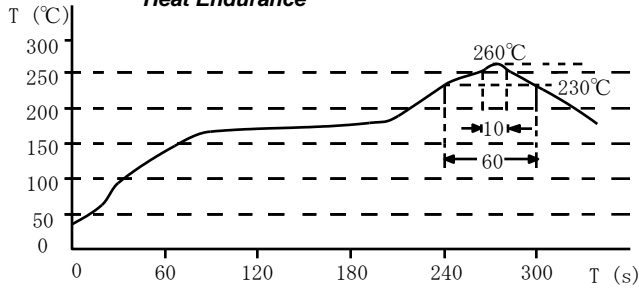


# SMD Power Inductor 104CDMCC/DS

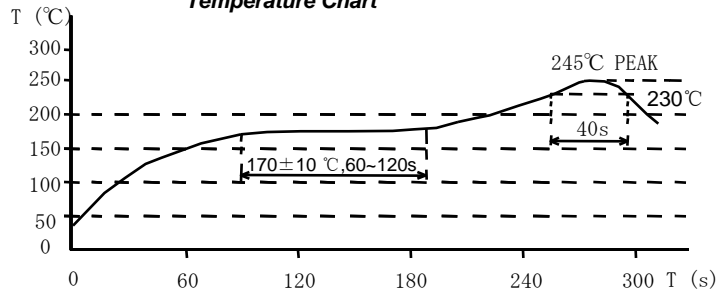


## Solder Reflow Condition

**Heat Endurance**



**Temperature Chart**



Please refer to the sales offices on our website - <http://www.sumida.com>

### Hong Kong

Tel. +852-2880-6781  
FAX. +852-2565-9600  
[sales@hk.sumida.com](mailto:sales@hk.sumida.com)

### Saitama(Japan)

Tel. +81-48-691-7300  
FAX. +81-48-691-7340  
[sales@jp.sumida.com](mailto:sales@jp.sumida.com)

### Chicago

Tel. +1-847-545-6700  
FAX. +1-847-545-6720  
[sales@us.sumida.com](mailto:sales@us.sumida.com)

### Shanghai

Tel. +86-21-5836-3299  
FAX. +86-21-5836-3266  
[shanghai.sales@cn.sumida.com](mailto:shanghai.sales@cn.sumida.com)

### Seoul

Tel. +82-2-6237-0777  
FAX. +82-2-6237-0778  
[sales@kr.sumida.com](mailto:sales@kr.sumida.com)

### Obernzell

Tel. +49-8591-937-0  
FAX. +49-8591-937-103  
[contact@eu.sumida.com](mailto:contact@eu.sumida.com)

### Shenzhen

Tel. +86-755-8291-0228  
FAX. +86-755-8291-0338  
[shenzhen.sales@cn.sumida.com](mailto:shenzhen.sales@cn.sumida.com)

### Singapore

Tel. +65-6296-3388  
FAX. +65-6841-4426  
[sales@sg.sumida.com](mailto:sales@sg.sumida.com)

### Neumarkt

Tel. +49-9181-4509-110  
FAX. +49-9181-4509-310  
[infocomp@eu.sumida.com](mailto:infocomp@eu.sumida.com)

### Taipei

Tel. +886-2-8751-2737  
FAX. +886-2-8751-2738  
[sales@tw.sumida.com](mailto:sales@tw.sumida.com)

### San Jose

Tel. +1-408-321-9660  
FAX. +1-408-321-9308  
[sales@us.sumida.com](mailto:sales@us.sumida.com)