

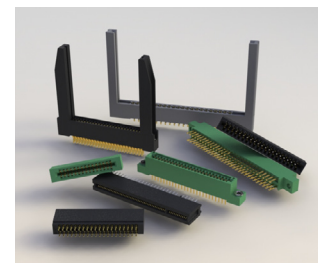
# 346/396 SERIES



## Card Edge Connectors 0.125" (3.175mm) Pitch

### Features:

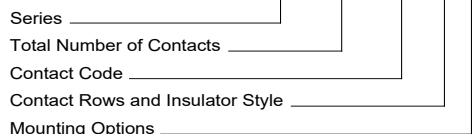
- 0.100" (2.54mm) contact spacing x 0.200" (5.08mm) row spacing
- Accepts 0.062" (1.57mm) nominal thickness P.C. board
- High profile insulator body, 0.600" (15.24mm)
- Contact termination options include P.C. tail, wire wrap, 90 degree bends and extender board bends
- Single or dual row configurations
- Large variety of mounting options, flush or offset lugs
- Accepts between contact and in-contact polarizing keys
- Pre-assembled card guides are available
- Automatic wire wrap positioning holes
- RoHS Compliant & UL Certified



### Specifications:

|                                 |  |
|---------------------------------|--|
| Insulator Material              | UL 94V-0 Thermoplastic Polyester   |
| Contact Material                | Copper Alloy   |
| Contact Plating                 | Gold Plating on mating area and Tin Plating on tails with Nickel underplating all over |
| Current Rating                  | 3 amps   |
| Contact Resistance              | 10 milliohms maximum   |
| Dielectric Withstanding Voltage | 1500 V AC rms at sea level between adjacent contacts                                   |
| Insulation Resistance           | 5000 megaohms minimum  |
| Operating Temperature           | -40°C to +105°C  |
| Insertion Force                 | 16 oz (4.45 N) maximum per contact pair when tested with .070" (1.78mm) thick gauge    |
| Withdrawal Force                | 1 oz (0.28 N) minimum per contact pair when tested with .054" (1.37mm) thick gauge     |

Example Part Number: **346-056-540-802**



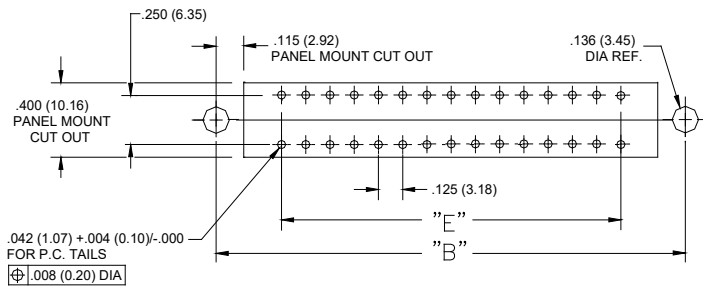
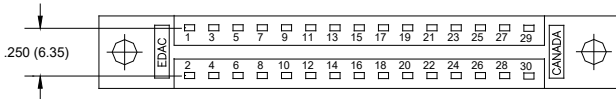
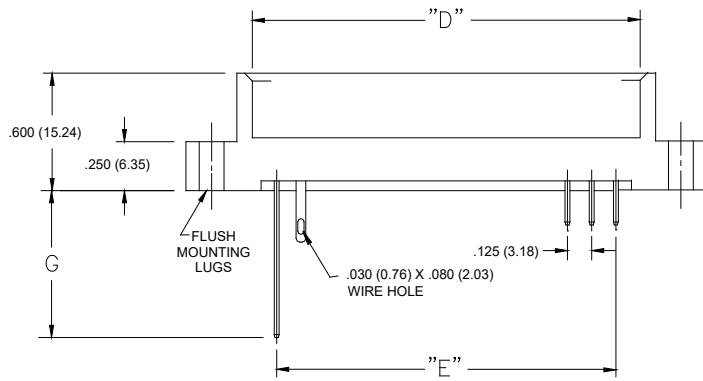
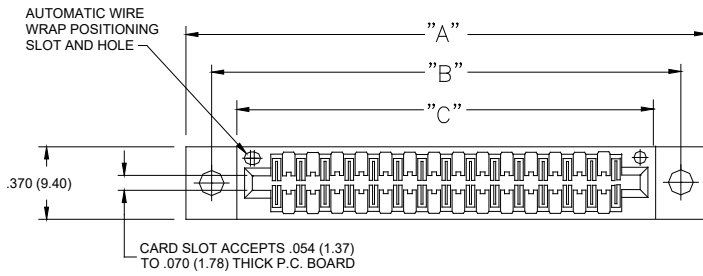
|                                  |   |                         |
|----------------------------------|---|-------------------------|
| <b>Series:</b>                   | <b>Insulator Color:</b>                   |                         |
| 346                              | Thermoplastic Polyester, Green            |                         |
| 396                              | Thermoplastic Polyester, Black            |                         |
| <b>Total Number of Contacts:</b> | <b>Contact Rows:</b>                      |                         |
| 005, 006, . . . . 050            | Single Row                                |                         |
| 010, 012, . . . . 100            | Dual Row                                  |                         |
| <b>Insulator Style:</b>          | <b>Description:</b>                       | <b>Insulator Style</b>  |
| 1                                | Single Row                                | Flush Mounting Lugs     |
| 2                                | Dual Row                                  | Flush Mounting Lugs     |
| 6                                | Single Row                                | .170 (4.32) Offset Lugs |
| 8                                | Dual Row                                  | .170 (4.32) Offset Lugs |
| <b>Mounting Options:</b>         | <b>Description:</b>                       |                         |
| 01                               | No Mounting Lug                           |                         |
| 02                               | Ø.128" (Ø3.25mm) Mounting Holes           |                         |
| 03                               | Ø.116" (Ø2.95mm) I.D. Floating Eyelets    |                         |
| 04                               | Ø.156" (Ø3.96mm) Mounting Holes           |                         |
| 07                               | M3-0.5 Metric Threaded Inserts            |                         |
| 08                               | #4-40 Unified Threaded Inserts            |                         |
| 12                               | Ø.128" (Ø3.25mm) Side Mounting Holes      |                         |
| 58                               | .468" (11.89mm) Offset Card Guides        |                         |
| 78                               | In-Line Card Guides 2.750" (69.85mm) Long |                         |

| Contact Code: | Tail Description:   | Tail Size:                | Tail Length "G": |
|---------------|---------------------|---------------------------|------------------|
| 500           | Wire Hole           | .050 x .025 (1.27 x 0.64) | .260 (6.60)      |
| 520           | P.C. Tail           | .025 Square (0.64 Square) | .175 (4.45)      |
| 521           | P.C. Tail           | .025 Square (0.64 Square) | .150 (3.81)      |
| 522           | P.C. Tail           | .025 Square (0.64 Square) | .440 (11.18)     |
| 526           | P.C. Tail           | .025 Square (0.64 Square) | .150 (3.81)      |
| 540           | Wire Wrap           | .025 Square (0.64 Square) | .560 (14.22)     |
| 541           | Wire Wrap           | .025 Square (0.64 Square) | .750 (19.05)     |
| 555           | EXTENDER BOARD BEND | (CODE 500 CONTACTS)       |                  |
| 556           | EXTENDER BOARD BEND | (CODE 520 CONTACTS)       |                  |
| 558           | 90 DEGREE BEND      | (CODE 541 CONTACTS)       |                  |
| 559           | 90 DEGREE BEND      | (CODE 541 CONTACTS)       |                  |
| 560           | EXTENDER BOARD BEND | (Code 526 Contacts)       |                  |

#### Ordering Code Notes:

- 1) All connector sizes up to 50 contacts single row / 100 contacts dual row are available upon request.
- 2) The 500 contact code is only available in the 346 series. Green Diallyl Phthalate insulator material will be supplied.
- 3) For details of the extender board and 90 degree bends refer to next pages.
- 4) Consult with EDAC Inc. regarding connectors with a .420" (10.67mm) card slot depth.
- 5) For lug-less connectors, code 01 mounting, specify contact row code 1 or 2.
- 6) In-line card guides are only available with offset mounting lugs.
- 7) For details of the mounting options refer to page 3.

## Card Edge Connectors 0.125" (3.175mm) Pitch



CONNECTOR MOUNTING PATTERN

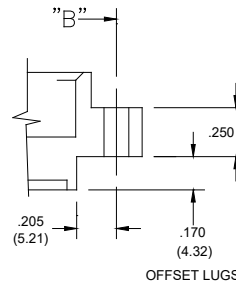
### IN-CONTACT POLARIZING KEY

P/N 345-240-328

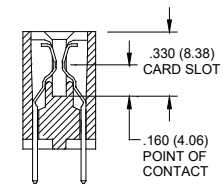


### BETWEEN CONTACT POLARIZING KEY

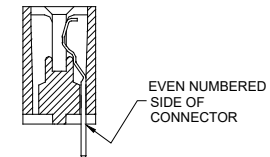
P/N 306-240-318



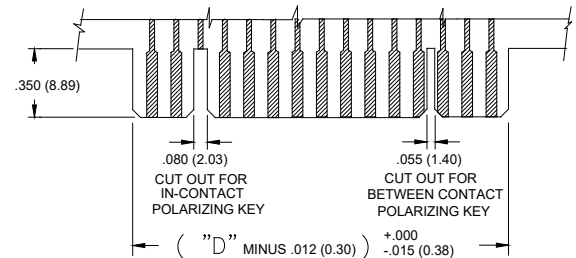
### SECTIONS THROUGH CONTACT POSITION



### DUAL ROW



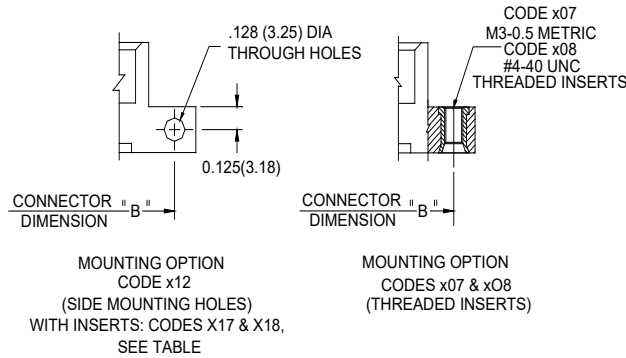
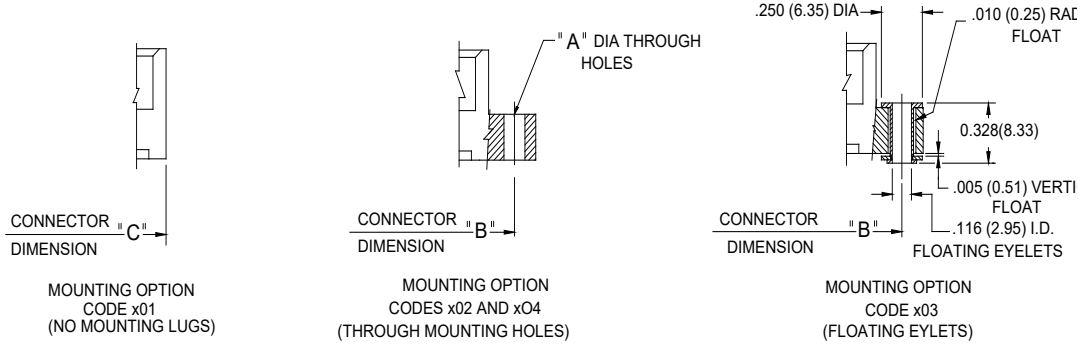
### SINGLE ROW



RECOMMENDED DAUGHTER BOARD

| NUMBER OF CONTACTS |        | "A"   |        | "B"   |        | "C"   |        | "D"   |        | "E"   |        |
|--------------------|--------|-------|--------|-------|--------|-------|--------|-------|--------|-------|--------|
| Single             | Double | Inch  | mm     | Inch  | mm     | Inch  | mm     | Inch  | mm     | Inch  | mm     |
| 5                  | 10     | 1.435 | 36.45  | 1.170 | 29.72  | 0.910 | 23.11  | 1.435 | 36.45  | 0.500 | 12.70  |
| 6                  | 12     | 1.560 | 39.62  | 1.295 | 32.89  | 1.035 | 26.29  | 1.560 | 39.62  | 0.625 | 15.88  |
| 10                 | 20     | 2.060 | 52.32  | 1.795 | 45.59  | 1.535 | 38.99  | 2.060 | 52.32  | 1.125 | 28.58  |
| 15                 | 30     | 2.685 | 68.20  | 2.420 | 61.47  | 2.160 | 54.86  | 2.685 | 68.20  | 1.750 | 44.45  |
| 18                 | 36     | 3.060 | 77.72  | 2.795 | 70.99  | 2.535 | 64.39  | 3.060 | 77.72  | 2.125 | 53.98  |
| 22                 | 44     | 3.560 | 90.42  | 3.295 | 83.69  | 3.035 | 77.09  | 3.560 | 90.42  | 2.625 | 66.68  |
| 25                 | 50     | 3.935 | 99.95  | 3.670 | 93.22  | 3.410 | 86.61  | 3.935 | 99.95  | 3.000 | 76.20  |
| 30                 | 60     | 4.560 | 115.82 | 4.295 | 109.09 | 4.035 | 102.49 | 4.560 | 115.82 | 3.625 | 92.08  |
| 31                 | 62     | 4.685 | 119.00 | 4.420 | 112.27 | 4.160 | 105.66 | 4.685 | 119.00 | 3.750 | 95.25  |
| 35                 | 70     | 5.185 | 131.70 | 4.920 | 124.97 | 4.660 | 118.36 | 5.185 | 131.70 | 4.250 | 107.95 |
| 36                 | 72     | 5.310 | 134.87 | 5.045 | 128.14 | 4.785 | 121.54 | 5.310 | 134.87 | 4.375 | 111.13 |
| 40                 | 80     | 5.810 | 147.57 | 5.545 | 140.84 | 5.285 | 134.24 | 5.810 | 147.57 | 4.875 | 123.83 |
| 43                 | 86     | 6.185 | 157.10 | 5.920 | 150.37 | 5.660 | 143.76 | 6.185 | 157.10 | 5.250 | 133.35 |
| 50                 | 100    | 7.060 | 179.32 | 6.795 | 172.59 | 6.535 | 165.99 | 7.060 | 179.32 | 6.125 | 155.58 |

## Card Edge Connectors 0.125" (3.175mm) Pitch



| CODE X02 AND X04- THROUGH MTG. HOLES |                |             |
|--------------------------------------|----------------|-------------|
|                                      | CODE X02       | CODE X04    |
| "A" DIA.                             | 0.128(3.25)    | 0.156(3.96) |
| CODE X07 AND X08- THREADED INSERTS   |                |             |
|                                      | CODE X07       | CODE X08    |
| INSERT                               | M3-0.5(METRIC) | #4-40 UNC   |
| SIDE MOUNTING HOLES WITH INSERTS     |                |             |
|                                      | CODE X17       | CODE X18    |
| INSERT                               | M3-0.5(METRIC) | #4-40 UNC   |
| CODE X78 - IN-LINE CARD GUIDES       |                |             |
|                                      | CODE X78       |             |
| "A"                                  | 2.750(69.85)   |             |

