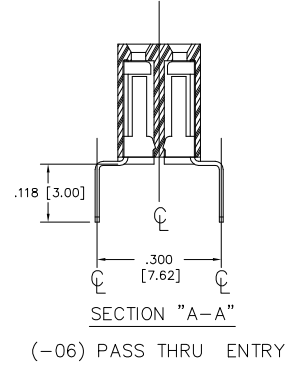
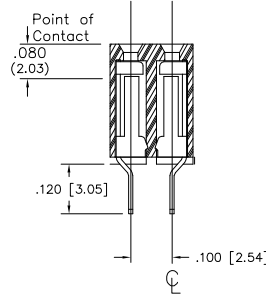
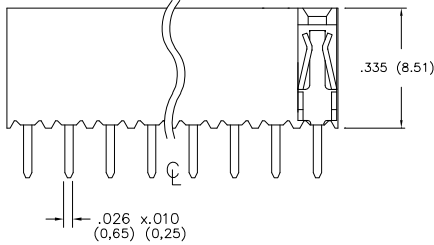
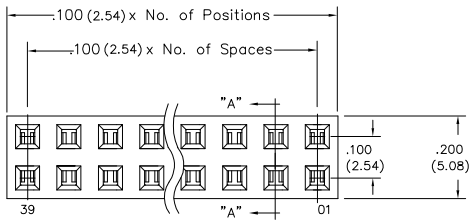
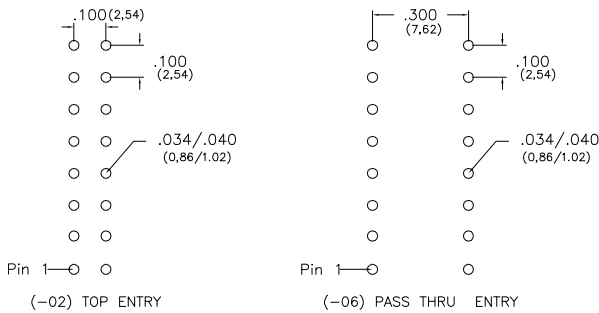


Major League Electronics .100cl Thicker Box Connector Socket Strip - Vertical



Recommended P.C. Board Layouts



Tails may be clipped to achieve desired pin length

Ordering Information

TBCSS-1 [XX] - D - [XX] - [XX] - [XX] - LF

Pins Per Row
03 - 40
Row Specification
D = Double

Lead Free

Polarized Position
Leave blank if not needed
If required, specify empty pin position, e.g. 012 for Pin 12

Pin Style	
Top Entry	02
Pass Thru Entry	06

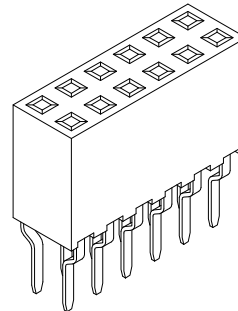
Plating Options	
H	- 30µ Gold on Contact Area / Matte Tin on Tail
T	- Matte Tin All Over
GT	- 10µ Gold on Contact Area / Matte Tin on Tail
F	- Gold Flash over Entire Pin
G	- 10µ Gold on Contact area / Flash on Tail

Specifications

- Insertion Depth: .145 (3.68) to .250 (6.35)
- Insertion Force - Per Contact - H Plating:
5oz. (1,39N) avg with .025 (0.64mm) sq. pin
- Withdrawal Force - Per Contact - H Plating:
3oz. (0,83N) avg with .025 (0.64mm) sq. pin
- Current Rating: 3.0 Ampere
- Insulation Resistance: 5000MΩ Min.
- Dielectric Withstanding: 500V AC
- Contact Resistance: 20 mΩ Max.
- Operating Temperature: -40°C to + 105°C
- Max. Process Temperature:
Peak: 260°C up to 20 secs.
Process: 230°C up to 60 secs.
Wave: 260°C up to 6 secs.
Reflow: 260°C up to 10 secs.
Manual Solder: 350°C up to 5 secs.

Materials

- Contact Material: Phosphor Bronze
- Insulator Material: Nylon 6T
- Plating: Au or Sn over 50µ" (1,27) Ni



Mates with:

- BSTC, TSHCR,
- BSTCM, TSHCRE,
- BSTCR, TSHCRSM,
- BSTCRSM, TSHR,
- BSTS, TSHRE,
- LBSTCM, TSHS,
- LTSHCR, TSHSCM,
- LTSHCRE, TSHSM,
- LTSHR, ULTSHSM,
- LTSHRE, ULTSHC,
- LTSHSM, ULTSHCR
- TSHC,

Products cut to specific sizes are uncancellable/nonreturnable

Parts are subject to change without notice

TBCSS-1-DV SERIES

Thicker Box Connector Socket Strip
Vertical

12 JAN 07

Scale
NTS

UNLESS OTHERWISE SPECIFIED
DIMENSIONS IN INCHES (MM)
TOLERANCES ARE:

ONE PLACE DECIMALS ±.100
TWO PLACE DECIMALS ±.010
THREE PLACE DECIMALS ±.005
FOUR PLACE DECIMALS ±.0020

ANGLES
±3°



4235 Earnings Way, New Albany, Indiana, 47150, USA
1-800-782-3486 (USA/Canada/Mexico)
Tel: 812-944-7244
Fax: 812-944-7268
E-mail: mle@mlelectronics.com
Web: www.mlelectronics.com

Edition
B

Sheet
1/2

Revisions

Revision B - (6th May 2010)

Pin dimension changed:

Previously .020 (0.51) x .010 (0.25)

Now .026 (0.65) x .010 (0.25)

TBCSS-1-DV SERIES

Thicker Box Connector Socket Strip
Vertical

12 JAN 07

Scale
NTS

UNLESS OTHERWISE SPECIFIED
DIMENSIONS IN INCHES (MM)
TOLERANCES ARE:

ONE PLACE DECIMALS ±.100
TWO PLACE DECIMALS ±.010
THREE PLACE DECIMALS ±.005
FOUR PLACE DECIMALS ±.0020

ANGLES
±3°



4235 Earnings Way, New Albany, Indiana, 47150, USA
1-800-782-3486 (USA/Canada/Mexico)
Tel: 812-944-7244
Fax: 812-944-7268
E-mail: mle@mlelectronics.com
Web: www.mlelectronics.com

Edition
B

Sheet
2/2