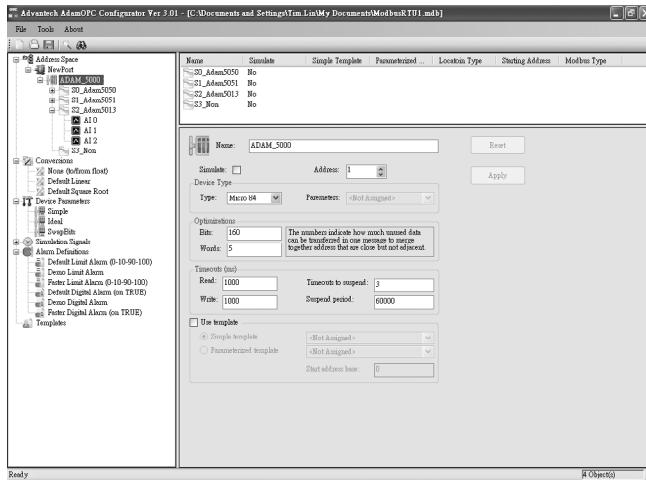


OPC Server

OPC Server for ADAM & Modbus Devices



Features

- Supports Microsoft Windows 8/7/XP/2000/NT/98
- Supports Advantech ASCII, MODBUS/RTU, and MODBUS/TCP protocol
- Compliant with the latest OPC Data Access 1.0, 2.04 and 3.0 standards
- Compliant with the latest OPC Alarm and Events 1.0 and 1.2 standards
- OPC DA and AE Client for rapid testing of your OPC data connections

Introduction

The Industrial Automation Group of Advantech introduces a standardized interface for industrial device servers, the OPC (OLE for process control) Server. An OPC server provides devices, such as an I/O device, to communicate with a wide range of HMI/SCADA software packages residing on a host. Any software system with OPC client capabilities can access the Advantech OPC server drivers.

Key Features of the OPC Servers

- Supports Microsoft Windows 8/7/XP/2000/NT/98
 - Supports Windows 7 / 8 both 32-bit and 64 bit versions
- Supports Advantech ASCII, MODBUS/RTU, and MODBUS/TCP protocol.
- Compliant with the latest OPC Data Access 1.0, 2.04 and 3.0 standards.
 - Compliant with the latest OPC Alarm and Events 1.0 and 1.2 standards.
 - Built-in OPC tag simulation and value conversion.
 - Wizards to create OPC Server tags about ADAM series quickly.
- Compatible with OPC client compliant application software.
- Provides OPC custom interface.
- Online configuration capability; add new signals and tags during runtime.
- Tag Multiplier let you create tags quickly.
- OPC DA and AE Client for rapid testing of your OPC data connections.

Specifications

Supported Hardware

- All ADAM-4000 series modules
- All ADAM-5000 series modules
- All ADAM-6000 series modules

Ordering Information

- **PCLS-OPC/ADM30** OPC Server for ADAM ASCII protocol
- **PCLS-OPC/MTP30** OPC Server for Modbus/TCP protocol
- **PCLS-OPC/RTU30** OPC Server for Modbus/RTU protocol