

Customer Information Sheet

DRAWING No.: P25-XX23

SHEET 2 OF 2

IF IN DOUBT - ASK

(C)

NOT TO SCALE

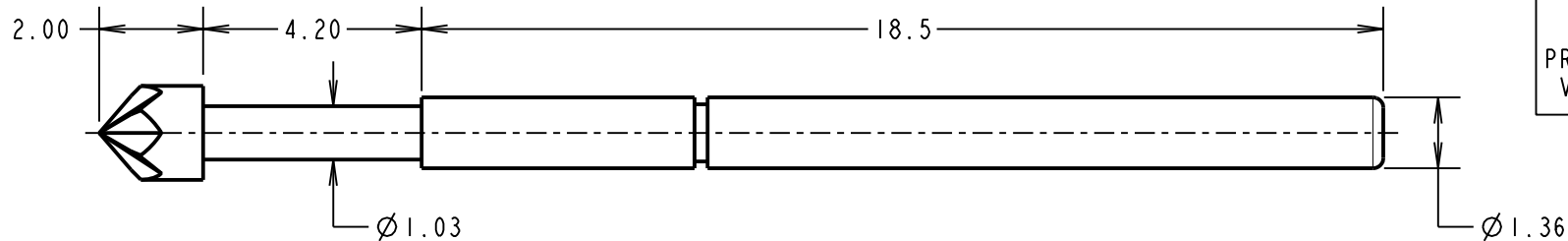
THIRD ANGLE PROJECTION

ALL DIMENSIONS IN mm

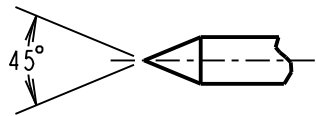
ORDER CODE:

P25-XX23

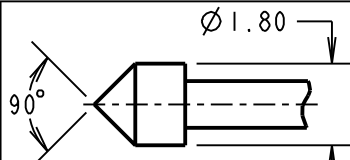
PROBE HEAD:
VARIANT (SEE BELOW)



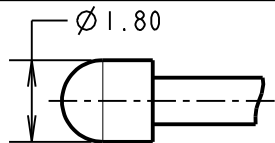
PROBE HEAD VARIANTS



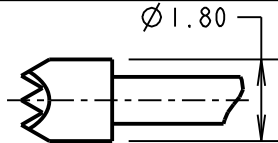
SPEAR HEAD
P25-0123



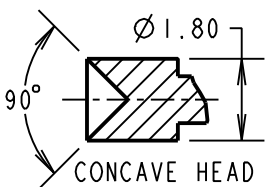
CONVEX HEAD
P25-2223



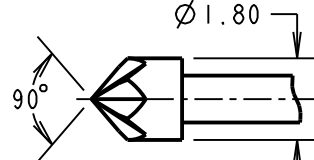
SPHERICAL RADIUS HEAD
P25-0423



SERRATED HEAD
P25-4023



CONCAVE HEAD
P25-1223



STAR HEAD
P25-5223

NOTES:

- TO BE USED WITH SLEEVE S25-XX2.
- SUITABLE FOR A MINIMUM DISTANCE BETWEEN CENTRES OF 2.54mm.

SPECIFICATIONS:

MATERIAL:

PLUNGER = BERYLLIUM COPPER
BARREL = BRASS
SPRING = STAINLESS STEEL

FINISH:

PLUNGER AND BARREL = GOLD

ELECTRICAL:

CURRENT RATING = 3A
CONTACT RESISTANCE = 50mΩ MAX AT 2/3 TRAVEL

MECHANICAL:

DURABILITY = 100,000 CYCLES MIN
FULL TRAVEL = 4.20mm

SPRING FORCES:

AT FULL TRAVEL = 1.47N ± 0.29N (150g ± 20%)
AT 2/3 TRAVEL = 1.13N ± 0.23N (115g ± 20%)

ENVIRONMENTAL:

TEMPERATURE RANGE = -40°C TO +180°C

MSP	8	21.07.17	20124
NAME	ISS.	DATE	C/NOTE
APPROVED: M.PERREN			
CHECKED: M.PLESTED			
DRAWN: W.J.BOURNE			
CUSTOMER REF.:			
ASSEMBLY DRG:			

HARWIN

www.harwin.com
technical@harwin.com

THIS DRAWING AND ANY INFORMATION OR DESCRIPTIVE MATTER SET OUT HEREON ARE CONFIDENTIAL AND COPYRIGHT PROPERTY OF THE HARWIN GROUP AND MUST NOT BE DISCLOSED, LOANED, COPIED OR USED FOR MANUFACTURING, TENDERING OR FOR ANY OTHER PURPOSE WITHOUT THEIR WRITTEN PERMISSION.

TOLERANCES

X. = ±1mm
X.X = ±0.50mm
X.XX = ±0.10mm
X.XXX = ±0.01mm
ANGLES = ±5°
UNLESS STATED

MATERIAL:

SEE ABOVE

FINISH:

SEE ABOVE

S/AREA:

mm²

TITLE:

2.54mm MIN. CENTRE
TWO-PIECE SPRING PROBE

DRAWING NUMBER:

P25-XX23

SHT
2 OF 2