

PAD	CONNECTION
1	Enable/Disable
2	Not connected
3	Ground
4	Output 1
5	Output 2
6	Supply

Features

- ▣ Differential outputs
- ▣ Low phase jitter
- ▣ Enable / disable tristate function
- ▣ Power saving function
- ▣ Fast rise / fall times

Specifications

Parameters	Product	Option Codes
	GXO-L71	
Frequency range:	75.0 ~ 270MHz	■
Frequency stability*:	±100ppm ±50ppm ±25ppm	■ □ □ B A
Operating temperature range:	-10 to +70°C -40 to +85°C	■ □ I
Storage temperature range:	-55 to +125°C	■
Supply voltage (V _{DD}):	+3.3V (±5%)	■
Supply current:	66mA max	■
Output:	LVDS	■
Offset voltage:	1.25V typ	■
Differential output voltage:	0.247V ~ 0.454V (0.33V typ)	■
Output load:	100Ω	■
Start up time:	10ms max	■
Waveform symmetry:	45:55 max @ 50%V _{p-p}	■
Rise / fall time:	0.7ns max (20 ~ 80%V _{p-p})	■
Enable / disable function:	Tristate (control via pad 1)	■
Output enable / disable time:	10 ms / 200ns max	■
Stand-by current:	30μA max	■
Phase jitter RMS:	1ps max (0.3ps typ), 12kHz~20MHz	■

■ Standard. □ Optional - Please specify required code(s) when ordering

* Frequency stability is inclusive of calibration @ 25°C, operating temperature range, supply voltage change, load change, ageing, shock and vibration.

Ordering Information

Product name + option codes (if any) + frequency

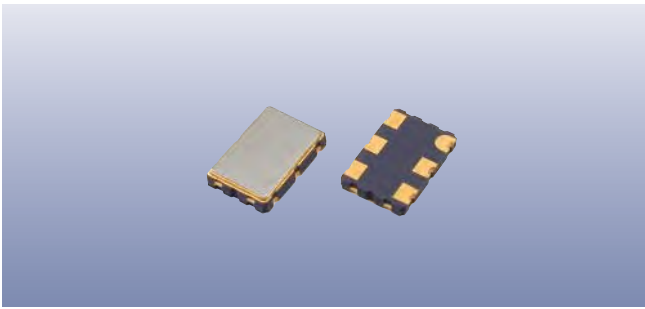
eg: **GXO-L71 80.0MHz** ±100ppm -10+70°C

GXO-L71/BI 125.0MHz ±50ppm -40+85°C

Option code X (eg GXO-L71/X) denotes a custom spec.

Enable / Disable Function

Input (pad 1)	Output 1 (pad 4)	Output 2 (pad 5)
Open	Enabled	Enabled
'1' level (≥0.7V _{DD})	Enabled	Enabled
'0' level (≤0.3V _{DD})	High Impedance	High Impedance



Construction

- ▮ Ceramic body with gold-plated pads
- ▮ Metal lid, seam sealed

Composition



This product is lead-free, and is fully compliant with the RoHS 2 directive 2011/65/EU



LeadFree

Packaging & Handling

Production quantities supplied on T&R, 2k pcs per reel.
Small quantities may be supplied on tape (no reel), or in bulk.



◆ Static sensitive product. Observe proper handling precautions

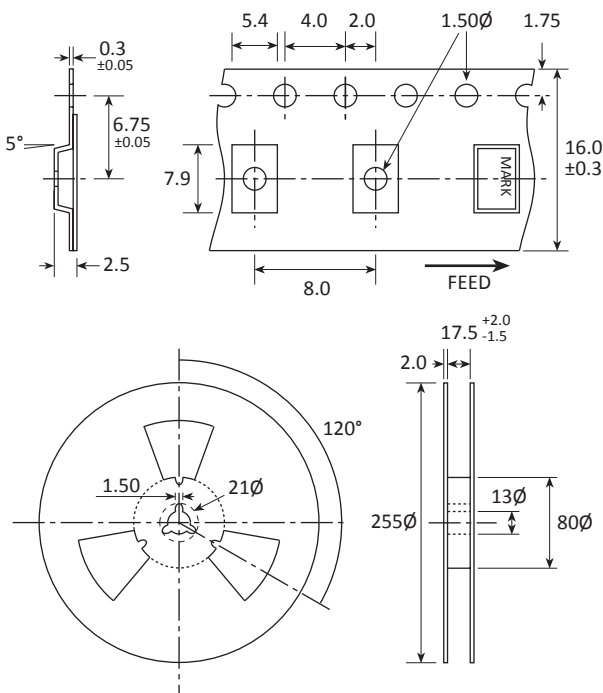
Marking

GOLLEDGE
FREQUENCY
• PARTNO DC

- Pin 1
- Marking type: Laser
- DC = Date code in YM, eg "CE" = May 2013

	A	B	C	D	E	F	G	H	J	K	L	M
Y	1	2	3	4	5	6	7	8	9	0		
M	Jan	Feb	Mar	Apr	May	Jun	Jul	Aug	Sep	Oct	Nov	Dec

Tape & Reel Specification



Not to scale. Dimensions in mm. Tolerances ±0.1mm unless otherwise stated.

Soldering Profile

