

01

0103

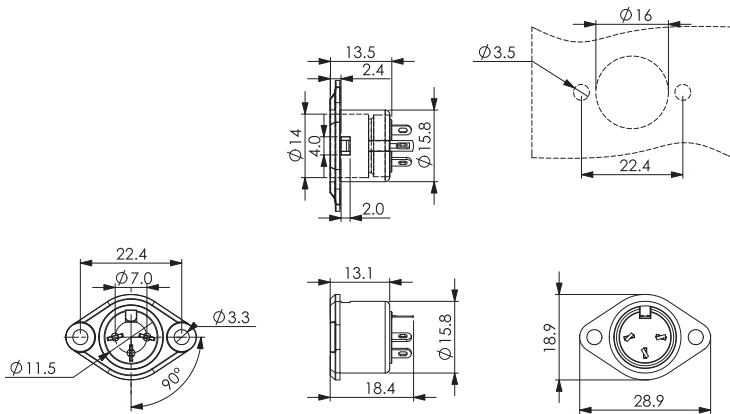
DIN circular connectors



DIN chassis socket, shielded, suitable for locking, metal housing, flange and solder terminals

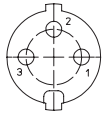
01

0103

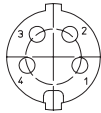


**Pin configurations, solder side view**

DIN 41524

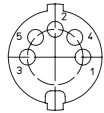


0103 03



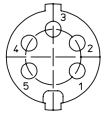
0103 04

DIN 41524



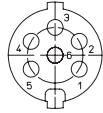
0103 05

DIN 45322



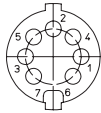
0103 05-1

DIN 45322



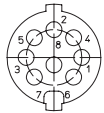
0103 06

DIN 45329



0103 07-1

DIN 45326



0103 08-1

**Environmental conditions**

Temperature range -20 °C/+85 °C



**Materials**

Insulating body ABS, V-0 according to UL94  
 Contact spring CuZn, silver-plated  
 Ground contact spring Cu, nickel-plated  
 Housing Zn alloy, nickel-plated

**Electrical data (at T<sub>amb</sub> 20 °C)**

Contact resistance ≤ 30 mΩ (contact spring)  
 ≤ 50 mΩ (housing)  
 Rated current ≤ 4 A  
 Rated voltage 60 V AC  
 Rated impulse voltage 250 V AC RMS/60 s  
 Insulation resistance ≥ 100 MΩ

**Associated products**

Counterparts  0131  0137

01

0103

Designation	Pole Number	PU (Pieces)	MDQ (Pieces)
0103 03	3	50	150
0103 04	4	50	150
0103 05	5	50	150
0103 05-1	5	50	150
0103 06	6	50	150
0103 07-1	7	50	150
0103 08-1	8	50	150

**Packaging:**

in individual plastic bags, in a cardboard box