

Marshalling panel - PTRV 4 /COL-RD



3001754

<https://www.phoenixcontact.com/us/products/3001754>

Please be informed that the data shown in this PDF document is generated from our Online Catalog. Please find the complete data in the user documentation. Our General Terms of Use for Downloads are valid.



Marshalling panel, nom. voltage: 250 V, nominal current: 10 A, connection method: Push-in connection, 1st, 2nd, 3rd and 4th level, Rated cross section: 1.5 mm², cross section: 0.14 mm² - 2.5 mm², mounting: NS 35/7,5, NS 35/15, color: gray

Your advantages

- Tool-free wiring in a confined space thanks to compact size
- Color configuration possible according to VDE 0812, VDE 0815, DIN 47100 or unlimited.
- Individual color assignment of cable and terminal point to ensure error-free, safe operation
- High contact quality thanks to push-in technology as a replacement for Wire-Wrap®, TERMI-POINT®, etc.
- The 2.3 mm test connection enables testing between the conductors with test pins commonly used in the industry

Marshalling panel - PTRV 4 /COL-RD



3001754

<https://www.phoenixcontact.com/us/products/3001754>

Commercial Data

Item number	3001754
Packing unit	1 pc
Minimum order quantity	1 pc
Sales Key	B02
Product Key	BE6211
Catalog Page	Page 54 (C-1-2019)
GTIN	4055626038315
Weight per Piece (including packing)	17.6 g
Weight per Piece (excluding packing)	15.56 g
Customs tariff number	85369010
Country of origin	PL

Marshalling panel - PTRV 4 /COL-RD



3001754

<https://www.phoenixcontact.com/us/products/3001754>

Technical Data

Product properties

Product type	Marshalling terminal
Number of positions	2
Number of connections	16
Number of rows	4
Potentials	4

Insulation characteristics

Overvoltage category	III
----------------------	-----

Electrical properties

Rated surge voltage	6 kV
Maximum power dissipation for nominal condition	0.56 W

Connection data

Number of connections per level	4
Nominal cross section	1.5 mm ²

1st, 2nd, 3rd and 4th level

Stripping length	8 mm ... 10 mm
Conductor cross section solid	0.14 mm ² ... 2.5 mm ²
Cross section AWG	26 ... 12
Conductor cross section flexible	0.14 mm ² ... 1.5 mm ²
Conductor cross section, flexible [AWG]	26 ... 14
Flexible conductor cross section flexible (ferrule, w/o plastic sleeve)	0.14 mm ² ... 1.5 mm ²
Flexible conductor cross section (ferrule with plastic sleeve)	0.14 mm ² ... 1.5 mm ²
Nominal current	10 A
Maximum load current	10 A (with 1.5 mm ² conductor cross section)
Nominal voltage	250 V
Nominal cross section	1.5 mm ²

1st, 2nd, 3rd and 4th level Connection cross sections directly pluggable

Conductor cross section solid	0.34 mm ² ... 2.5 mm ²
Conductor cross section, solid [AWG]	20 ... 12
Conductor cross section flexible	0.34 mm ² ... 1.5 mm ²
Conductor cross section, flexible [AWG]	14
Flexible conductor cross section flexible (ferrule, w/o plastic sleeve)	0.34 mm ² ... 1.5 mm ²
Flexible conductor cross section (ferrule with plastic sleeve)	0.34 mm ² ... 1.5 mm ²

Dimensions

Width	8.3 mm
-------	--------

Marshalling panel - PTRV 4 /COL-RD



3001754

<https://www.phoenixcontact.com/us/products/3001754>

Height NS 35/15	63 mm
Height NS 35/7,5	55.5 mm
Length	64 mm

Material specifications

Color	gray
Flammability rating according to UL 94	V0
Insulating material group	I
Insulating material	PA

Connector

Number of positions	2
Number of positions	2

Mechanical properties

Mechanical data

Open side panel	Yes
-----------------	-----

Environmental and real-life conditions

Ambient conditions

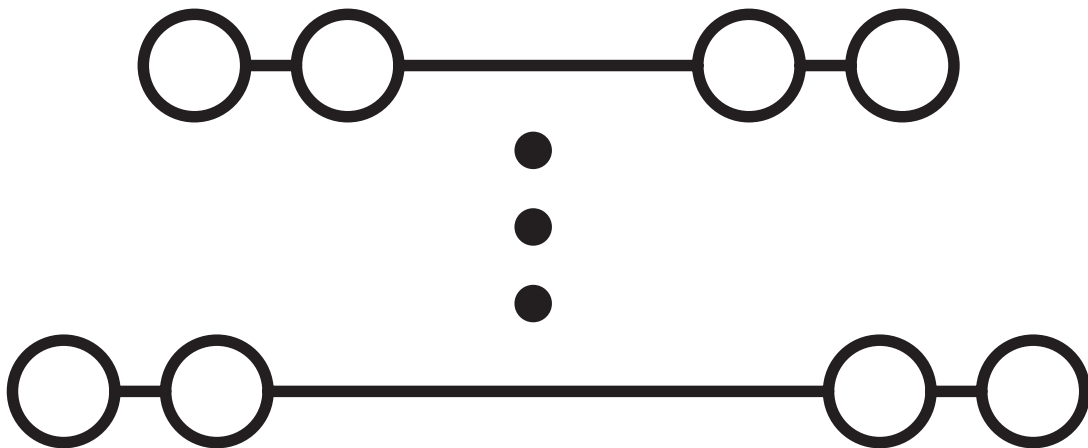
Ambient temperature (operation)	-60 °C ... 85 °C
Ambient temperature (storage/transport)	-25 °C ... 55 °C (for a short time, not exceeding 24 h, -60 °C to +70 °C)
Ambient temperature (assembly)	-5 °C ... 70 °C
Ambient temperature (actuation)	-5 °C ... 70 °C
Permissible humidity (storage/transport)	30 % ... 70 %

Mounting

Mounting type	NS 35/7,5
	NS 35/15

Drawings

Circuit diagram



Marshalling panel - PTRV 4 /COL-RD




3001754


<https://www.phoenixcontact.com/us/products/3001754>


Approvals


 DNV Approval ID: TAE000016Y				
---	--	--	--	--


 CSA Approval ID: 13631				
	Nominal Voltage U_N	Nominal Current I_N	Cross Section AWG	Cross Section mm^2
Use group B				
	300 V	10 A	26 - 14	-
Use group D				
	300 V	10 A	26 - 14	-

 IECEE CB Scheme Approval ID: NL-58817				
	Nominal Voltage U_N	Nominal Current I_N	Cross Section AWG	Cross Section mm^2
	250 V	10 A	-	-

 EAC Approval ID: RU C-DE.BL08.B.00682				
---	--	--	--	--

 cULus Recognized Approval ID: E60425				
	Nominal Voltage U_N	Nominal Current I_N	Cross Section AWG	Cross Section mm^2
Use group D				
	300 V	10 A	26 - 14	-

 KEMA-KEUR Approval ID: 71-102890				
	Nominal Voltage U_N	Nominal Current I_N	Cross Section AWG	Cross Section mm^2
Only flexible conductors	250 V	10 A	-	0.14 - 1.5
Only rigid conductors	250 V	10 A	-	0.14 - 2.5

 EAC Approval ID: B.01687				
--	--	--	--	--

Marshalling panel - PTRV 4 /COL-RD



3001754

<https://www.phoenixcontact.com/us/products/3001754>

Classifications

ECLASS

ECLASS-9.0	27141120
ECLASS-10.0.1	27141120
ECLASS-11.0	27141120

ETIM

ETIM 8.0	EC000897
----------	----------

UNSPSC

UNSPSC 21.0	39121400
-------------	----------

Marshalling panel - PTRV 4 /COL-RD



3001754

<https://www.phoenixcontact.com/us/products/3001754>

Environmental Product Compliance

China RoHS	Environmentally friendly use period: unlimited = EFUP-e
	No hazardous substances above threshold values

Marshalling panel - PTRV 4 /COL-RD



3001754

<https://www.phoenixcontact.com/us/products/3001754>

Accessories

Actuation tool

Actuation tool - ST-BW 0 - 1200135

<https://www.phoenixcontact.com/us/products/1200135>



Actuation tool, for all 1.5 mm² spring cages from PT 1,5/S and FT 1,5/S

Screwdriver

Screwdriver - SZF 0-0,4X2,5 - 1204504

<https://www.phoenixcontact.com/us/products/1204504>



Actuation tool, for ST terminal blocks, also suitable for use as a bladed screwdriver, size: 0.4 x 2.5 x 75 mm, 2-component grip, with non-slip grip

Marshalling panel - PTRV 4 /COL-RD

3001754

<https://www.phoenixcontact.com/us/products/3001754>

Spacer plate

Spacer plate - DP-PTRV 4 - 3270163

<https://www.phoenixcontact.com/us/products/3270163>

Spacer plate, length: 63.6 mm, width: 8.3 mm, height: 54 mm, color: gray



End clamp

End clamp - CLIPFIX 35 - 3022218

<https://www.phoenixcontact.com/us/products/3022218>

Quick mounting end clamp for NS 35/7,5 DIN rail or NS 35/15 DIN rail, with marking option, width: 9.5 mm, color: gray



Marshalling panel - PTRV 4 /COL-RD

3001754

<https://www.phoenixcontact.com/us/products/3001754>



End clamp

End clamp - CLIPFIX 35-5 - 3022276

<https://www.phoenixcontact.com/us/products/3022276>

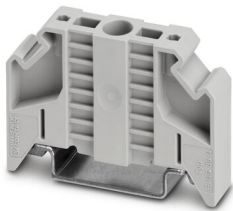


Quick mounting end clamp for NS 35/7,5 DIN rail or NS 35/15 DIN rail, with marking option, with parking option for FBS...5, FBS...6, KSS 5, KSS 6, width: 5.15 mm, color: gray

End clamp

End clamp - E/NS 35 N - 0800886

<https://www.phoenixcontact.com/us/products/0800886>



End clamp, width: 9.5 mm, color: gray

Marshalling panel - PTRV 4 /COL-RD

3001754

<https://www.phoenixcontact.com/us/products/3001754>

End clamp

End clamp - E/UK - 1201442

<https://www.phoenixcontact.com/us/products/1201442>

End clamp, material: PA, color: gray, Mounting on a DIN rail NS 32 or NS 35



End clamp

End clamp - E/UK 1 - 1201413

<https://www.phoenixcontact.com/us/products/1201413>

End clamps, for supporting the ends of double-level and three-level terminal blocks, width: 10 mm, color: gray



Marshalling panel - PTRV 4 /COL-RD



3001754

<https://www.phoenixcontact.com/us/products/3001754>

End cover

End cover - D-PTRV 4 WH - 3270151

<https://www.phoenixcontact.com/us/products/3270151>



End cover, length: 63.6 mm, width: 3.8 mm, height: 48.9 mm, color: white

End cover

End cover - D-PTRV 4 WH 1-4 - 3270152

<https://www.phoenixcontact.com/us/products/3270152>



End cover, length: 63.6 mm, width: 2.2 mm, height: 48.9 mm, color: white

Marshalling panel - PTRV 4 /COL-RD



3001754

<https://www.phoenixcontact.com/us/products/3001754>

End cover

End cover - D-PTRV 4 WH 1-4 LGS - 3270234

<https://www.phoenixcontact.com/us/products/3270234>



End cover, length: 63.6 mm, width: 2.2 mm, height: 48.9 mm, color: white

End cover

End cover - D-PTRV 4 WH 4-1 - 3270236

<https://www.phoenixcontact.com/us/products/3270236>



End cover, length: 63.6 mm, width: 2.2 mm, height: 48.9 mm, color: white

Marshalling panel - PTRV 4 /COL-RD



3001754

<https://www.phoenixcontact.com/us/products/3001754>

End cover

End cover - D-PTRV 4 WH 4-1 LGS - 3270238

<https://www.phoenixcontact.com/us/products/3270238>



End cover, length: 63.6 mm, width: 2.2 mm, height: 48.9 mm, color: white

End cover

End cover - D-PTRV 4 WH A-D - 3270153

<https://www.phoenixcontact.com/us/products/3270153>



End cover, length: 63.6 mm, width: 2.2 mm, height: 48.9 mm, color: white

Marshalling panel - PTRV 4 /COL-RD

3001754

<https://www.phoenixcontact.com/us/products/3001754>

End cover

End cover - D-PTRV 4 WH A-D LGS - 3270235

<https://www.phoenixcontact.com/us/products/3270235>



End cover, length: 63.6 mm, width: 2.2 mm, height: 48.9 mm, color: white

End cover

End cover - D-PTRV 4 WH D-A - 3270237

<https://www.phoenixcontact.com/us/products/3270237>



End cover, length: 63.6 mm, width: 2.2 mm, height: 48.9 mm, color: white

Marshalling panel - PTRV 4 /COL-RD



3001754

<https://www.phoenixcontact.com/us/products/3001754>

End cover

End cover - D-PTRV 4 WH D-A LGS - 3270239

<https://www.phoenixcontact.com/us/products/3270239>



End cover, length: 63.6 mm, width: 2.2 mm, height: 48.9 mm, color: white

Mounting material

Mounting material - PT-IL - 3208090

<https://www.phoenixcontact.com/us/products/3208090>



Operating decal for the push-in Technology

Marshalling panel - PTRV 4 /COL-RD

3001754

<https://www.phoenixcontact.com/us/products/3001754>



End cap

End cap - NS 35/ 7,5 CAP - 1206560

<https://www.phoenixcontact.com/us/products/1206560>

DIN rail end piece, for DIN rail NS 35/7.5



DIN rail, unperforated

DIN rail, unperforated - NS 35/ 7,5 UNPERF 2000MM - 0801681

<https://www.phoenixcontact.com/us/products/0801681>



DIN rail, unperforated, acc. to EN 60715, material: Steel, galvanized, passivated with a thick layer, Standard profile, color: silver, Pack of 25 (50 m)

Marshalling panel - PTRV 4 /COL-RD

3001754

<https://www.phoenixcontact.com/us/products/3001754>



DIN rail, unperforated

DIN rail, unperforated - NS 35/ 7,5 WH UNPERF 2000MM-VPE 10 - 1204122

<https://www.phoenixcontact.com/us/products/1204122>



DIN rail, unperforated, acc. to EN 60715, material: Steel, Galvanized, white passivated, Standard profile, color: silver, Pack of 10 (20 m)

DIN rail, unperforated

DIN rail, unperforated - NS 35/ 7,5 AL UNPERF 2000MM - 0801704

<https://www.phoenixcontact.com/us/products/0801704>



DIN rail, unperforated, acc. to EN 60715, material: Aluminum, uncoated, Standard profile, color: silver, Pack of 25 (50 m)

Marshalling panel - PTRV 4 /COL-RD

3001754

<https://www.phoenixcontact.com/us/products/3001754>



DIN rail, unperforated

DIN rail, unperforated - NS 35/ 7,5 ZN UNPERF 2000MM - 1206434

<https://www.phoenixcontact.com/us/products/1206434>



DIN rail, unperforated, acc. to EN 60715, material: Steel, galvanized, Standard profile, color: silver, Pack of 25 (50 m)

DIN rail, unperforated

DIN rail, unperforated - NS 35/ 7,5 CU UNPERF 2000MM-VPE 10 - 0801762

<https://www.phoenixcontact.com/us/products/0801762>



DIN rail, unperforated, acc. to EN 60715, material: Copper, uncoated, Standard profile, color: copper-colored, Pack of 10 (20 m)

Marshalling panel - PTRV 4 /COL-RD

3001754

<https://www.phoenixcontact.com/us/products/3001754>



DIN rail perforated

DIN rail perforated - NS 35/ 7,5 PERF 2000MM - 0801733

<https://www.phoenixcontact.com/us/products/0801733>



DIN rail perforated, acc. to EN 60715, material: Steel, galvanized, passivated with a thick layer, Standard profile, color: silver, Pack of 25 (50 m)

DIN rail perforated

DIN rail perforated - NS 35/ 7,5 WH PERF 2000MM - 1204119

<https://www.phoenixcontact.com/us/products/1204119>



DIN rail perforated, acc. to EN 60715, material: Steel, Galvanized, white passivated, Standard profile, color: silver, Pack of 25 (50 m)

Marshalling panel - PTRV 4 /COL-RD

3001754

<https://www.phoenixcontact.com/us/products/3001754>



DIN rail perforated

DIN rail perforated - NS 35/ 7,5 ZN PERF 2000MM - 1206421

<https://www.phoenixcontact.com/us/products/1206421>

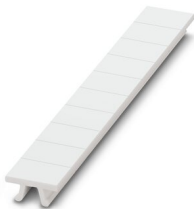


DIN rail perforated, acc. to EN 60715, material: Steel, galvanized, Standard profile, color: silver, Pack of 25 (50 m)

Zack marker strip

Zack marker strip - ZB 8,3:UNBEDRUCKT - 0803444

<https://www.phoenixcontact.com/us/products/0803444>



Zack marker strip, Strip, white, unlabeled, can be labeled with: PLOTMARK, CMS-P1-PLOTTER, mounting type: snap in, for terminal block width: 8.3 mm, lettering field size: 10.5 x 8.3 mm

Marshalling panel - PTRV 4 /COL-RD



3001754

<https://www.phoenixcontact.com/us/products/3001754>

Zack marker strip

Zack marker strip - ZB 8,3,LGS:FORTL.ZAHLEN - 0803480

<https://www.phoenixcontact.com/us/products/0803480>



Zack marker strip, Strip, white, labeled, can be labeled with: CMS-P1-PLOTTER, mounting type: snap into tall marker groove, for terminal block width: 8.3 mm, lettering field size: 10.5 x 8.3 mm

Zack marker strip

Zack marker strip - ZB 8,3,QR:FORTL.ZAHLEN - 0803479

<https://www.phoenixcontact.com/us/products/0803479>



Zack marker strip, Strip, white, labeled, can be labeled with: CMS-P1-PLOTTER, mounting type: snap into tall marker groove, for terminal block width: 8.3 mm, lettering field size: 10.5 x 8.3 mm

Marshalling panel - PTRV 4 /COL-RD



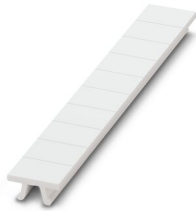
3001754

<https://www.phoenixcontact.com/us/products/3001754>

Zack marker strip

Zack marker strip - ZB 8,3 CUS - 8191573

<https://www.phoenixcontact.com/us/products/8191573>



Zack marker strip, Strip, white, labeled according to customer specifications, mounting type: snap into tall marker groove, for terminal block width: 8.3 mm, lettering field size: 10.5 x 8.3 mm

Retaining bracket

Retaining bracket - CDC-PTRV - 3270167

<https://www.phoenixcontact.com/us/products/3270167>



Retaining bracket, via four PTRV single modules, pitch: 8.3 mm, width: 35.6 mm, height: 71.5 mm, color: gray

Phoenix Contact 2022 © - all rights reserved
<https://www.phoenixcontact.com>

Phoenix Contact USA
586 Fulling Mill Road
Middletown, PA 17057, United States
(+717) 944-1300
info@phoenixcon.com