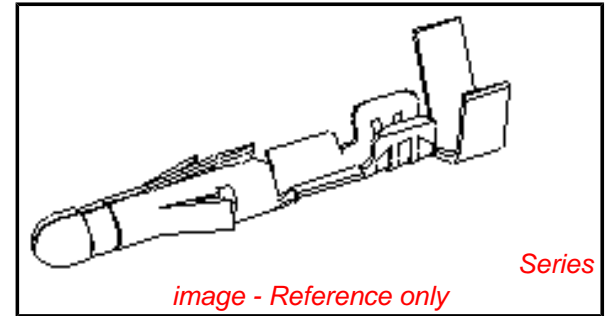


**PLEASE CHECK WWW.MOLEX.COM FOR LATEST PART INFORMATION**

**Part Number:** [0002092103](#)  
**Status:** **Active**  
**Overview:** [standard\\_093](#)  
**Description:** 2.36mm (.093") Diameter, Standard .093" Pin and Socket Crimp Terminal, Series 1190, Male, with Tin (Sn) Plated Brass Contact, 14-20 AWG, Bag

**Documents:**

[Drawing \(PDF\)](#) [RoHS Certificate of Compliance \(PDF\)](#)  
[Product Specification PS-02-09 \(PDF\)](#)



**General**

Product Family	Crimp Terminals
Series	<a href="#">1190</a>
Crimp Quality Equipment	Yes
Overview	<a href="#">standard_093</a>
Product Name	Standard .093"
<b>Physical</b>	
Durability (mating cycles max)	25
Gender	Male
Material - Metal	Brass
Material - Plating Mating	Tin
Material - Plating Termination	Tin
Packaging Type	Bag
Plating min: Mating (µin)	20
Plating min: Mating (µm)	0.50
Plating min: Termination (µin)	20
Plating min: Termination (µm)	0.50
Termination Interface: Style	Crimp or Compression
Wire Insulation Diameter	1.65-4.06mm (.065-.160")
Wire Size AWG	14, 16, 18, 20
Wire Size mm²	N/A

**Material Info**

Old Part Number 1190-(P901)L

**Reference - Drawing Numbers**

Packaging Specification	PK-1190-001
Product Specification	PS-02-09
Sales Drawing	SD-1190-*

**EU RoHS**

**ELV and RoHS  
Compliant**  
**REACH SVHC  
Contains SVHC: No**

**China RoHS**



**Halogen-Free  
Status**

**Halogen-Free**

**Need more information on product  
environmental compliance?**

Email [productcompliance@molex.com](mailto:productcompliance@molex.com)  
 For a multiple part number RoHS Certificate of Compliance, [click here](#)

Please visit the [Contact Us](#) section for any non-product compliance questions.

**Search Parts in this Series**

[1190Series](#)

**Use With**

[1619](#) Plug or Receptacle Housing, [1545](#) Plug or Receptacle Housing, [1396](#) Plug or Receptacle Housing, [1490](#) Plug or Receptacle Housing, [2629](#) Plug or Receptacle Crimp Housings, [1261](#) Plug or Receptacle Housing, [1292](#) Plug or Receptacle Housing, [1360](#) Plug or Receptacle Housing, [1375](#) Plug or Receptacle Housing, [3191](#) Plug or Receptacle Housing, [2163](#) Plug or Receptacle Housings

**Application Tooling | FAQ**

*Tooling specifications and manuals are found by selecting the products below. Crimp Height Specifications are then contained in the Application Tooling Specification document.*

**Global**

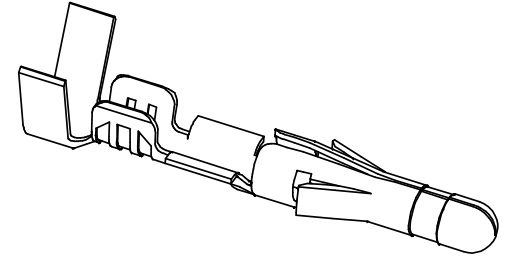
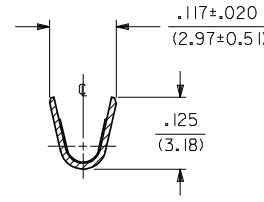
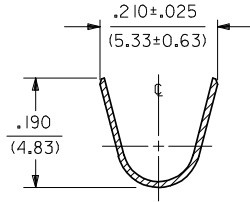
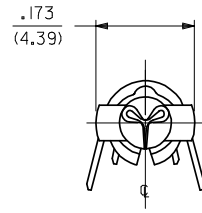
Description	Product #
Hand Crimp Tool	<a href="#">0638191100</a>
Insertion Tool	<a href="#">0011020003</a>

Extraction Tool	<u>0011030006</u>
Hand Crimper - DISTRIBUTION ONLY	<u>0638111000</u>

This document was generated on 05/17/2010

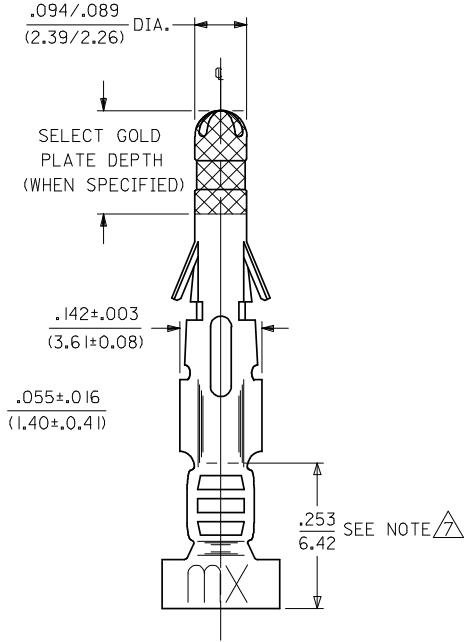
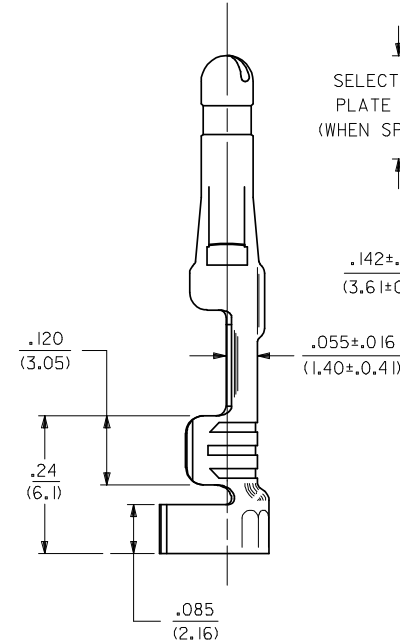
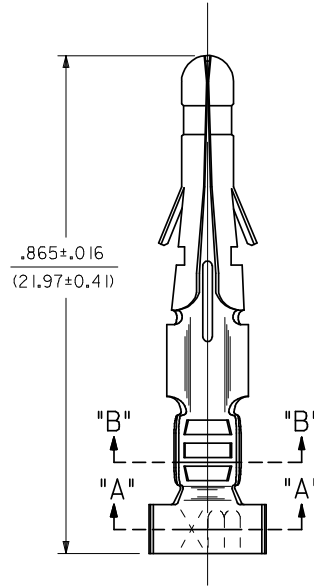
**PLEASE CHECK [WWW.MOLEX.COM](http://WWW.MOLEX.COM) FOR LATEST PART INFORMATION**

PART NO.	ENG. NO.
02-09-2103	1190-(P901)L
02-09-2101	1190-(P901)
02-09-6110	1190-(591)L
02-09-6101	1190-(591)
02-09-6106	1190-(550)L
02-09-6100	1190-(550)



SECT. "A-A"

SECT. "B-B"



NOTES:

1) MATERIAL:

CARTRIDGE BRASS

2) FINISH CODES:

901 HOT TIN DIP .000020/(0.00051) MIN.

591 SELECT GOLD PLATE .000050/(0.00127) MIN. IN CONTACT AREA, OVER .000050/(0.00127) MIN. NICKEL OVERALL WITH .000010/(0.00025) MAX. GOLD FLASH OVERALL.

550 SELECT GOLD PLATE .000015/(0.00038) MIN. IN CONTACT AREA, OVER .000030/(0.00076) MIN. NICKEL OVERALL WITH .000010/(0.00025) MAX. GOLD FLASH OVERALL.

3) PRODUCT SPECIFICATION: PS-43660-9999

4) PACKAGING SPECIFICATION: PK-1190-001

5) INSERTION FORCE: 3.5 LBS. MAX. WHEN TERMINAL IS INSERTED INTO .093 SERIES HOUSING.

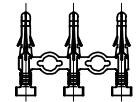
6) RETENTION: 20 LBS. MIN. FROM HOUSING.

DIMENSION FROM THE END OF THE TERMINAL TO THE END OF THE BRUSH ON THE WIRE CRIMPED INTO THE TERMINAL.

8) TERMINAL FOR USE WITH .093/(2.36) SERIES HOUSINGS AND WILL ACCEPT 14 THRU 20 AWG WIRE.

LEGEND

1190-(\*\*\*\*)\*  
 P=PREPLATE BLANK=POSTPLATE  
 FORM BLANK=CHAIN L=LOOSE  
 FINISH CODE



CHAIN FORM FULL SCALE

ADD PK SPEC EC NO: UCP2009-0180 DRWG:GVERILL 2008/08/15 CHKD:AELHAG 2008/08/22 APPR:FSM LTH 2008/08/22 BS1 REV	DESCRIPTION	QUALITY SYMBOLS = 0 = 0	GENERAL TOLERANCES (UNLESS SPECIFIED) <table border="1"> <thead> <tr> <th></th> <th>mm</th> <th>INCH</th> </tr> </thead> <tbody> <tr> <td>4 PLACES</td> <td>± .010</td> <td>± .0004</td> </tr> <tr> <td>3 PLACES</td> <td>± .015</td> <td>± .0006</td> </tr> <tr> <td>2 PLACES</td> <td>± .025</td> <td>± .0010</td> </tr> <tr> <td>1 PLACE</td> <td>± 0.13</td> <td>± .0051</td> </tr> </tbody> </table>		mm	INCH	4 PLACES	± .010	± .0004	3 PLACES	± .015	± .0006	2 PLACES	± .025	± .0010	1 PLACE	± 0.13	± .0051	DIMENSION STYLE <b>IN/MM</b>	SCALE <b>6:1</b>	DESIGN UNITS <b>INCH</b>	<b>THIRD ANGLE PROJECTION</b>
		mm	INCH																			
4 PLACES	± .010	± .0004																				
3 PLACES	± .015	± .0006																				
2 PLACES	± .025	± .0010																				
1 PLACE	± 0.13	± .0051																				
DRAFT WHERE APPLICABLE MUST REMAIN WITHIN DIMENSIONS			DRAWN BY: GEP DATE: 10/26/87 CHECKED BY: RW DATE: 10/26/87 APPROVED BY: RAS DATE: 10/26/87 MATERIAL NO. SEE CHART DOCUMENT NO. SD-1190-*	<b>CRIMP TERMINAL, MALE</b> <b>.093/(2.36) DIA.</b> <b>FOR 14 THRU 20 AWG. WIRE</b> <b>MOLEX INCORPORATED</b>		SHEET NO. <b>1 OF 1</b>																