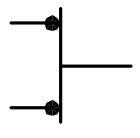
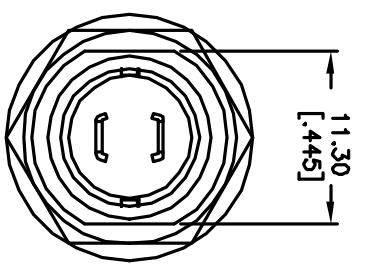
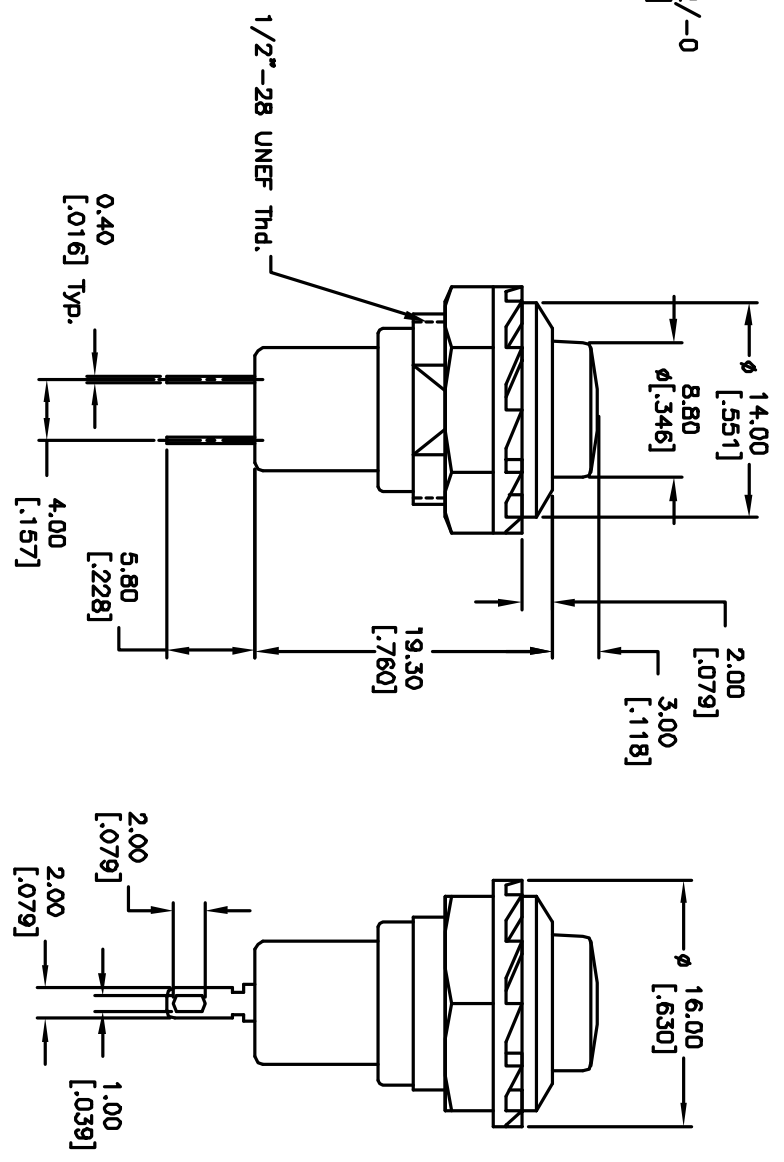


RECOMMEND PANEL MOUNTING



CIRCUIT: 2P: SPST
CONTACT CONFIGURATION
ON (OFF)



- NOTES:
1. ALL DIMENSIONS IN MM [INCH]
 2. GENERAL TOLERANCE: 0.0=±0.4
0.00=±0.25
 3. TERM. NOS. FOR REF. ONLY
 4. RATING: 3A 125V, 1.5A 250V AC
 5. CONTACT RESISTANCE: 50m ohm max.
 6. INSULATION RESISTANCE: DC 500V 100M ohm min.
 7. DIELECTRIC STRENGTHS: AC 1000V 1 minute

REV.	ECN No.	DESCRIPTION	DATE	CHKD
A	10525	RELEASED FOR PRODUCTION		

TITLE		SCALE		DATE	DR	DWG	REV
RP3502B-BLK		2:1		2/9/00	MM	F030013	A

E-SWITCH®

THE INFORMATION CONTAINED IN THIS DOCUMENT IS PROPRIETARY TO E-SWITCH AND IS NOT TO BE COPIED OR TRANSMITTED