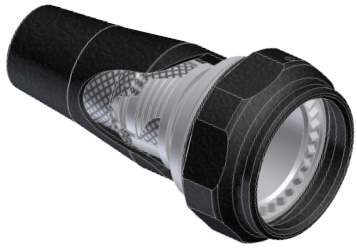




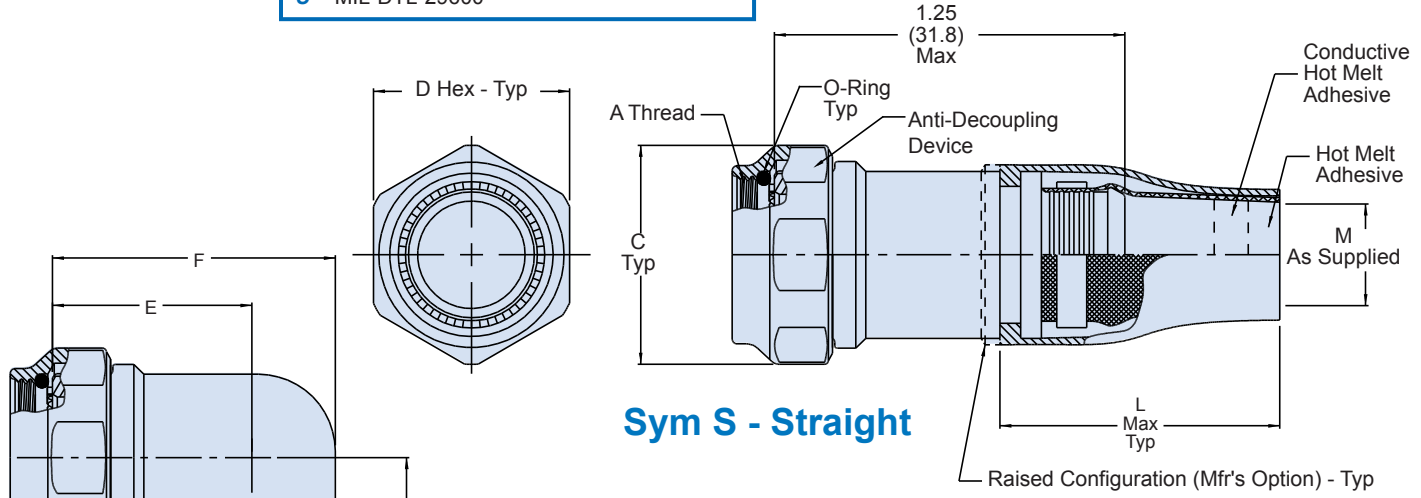
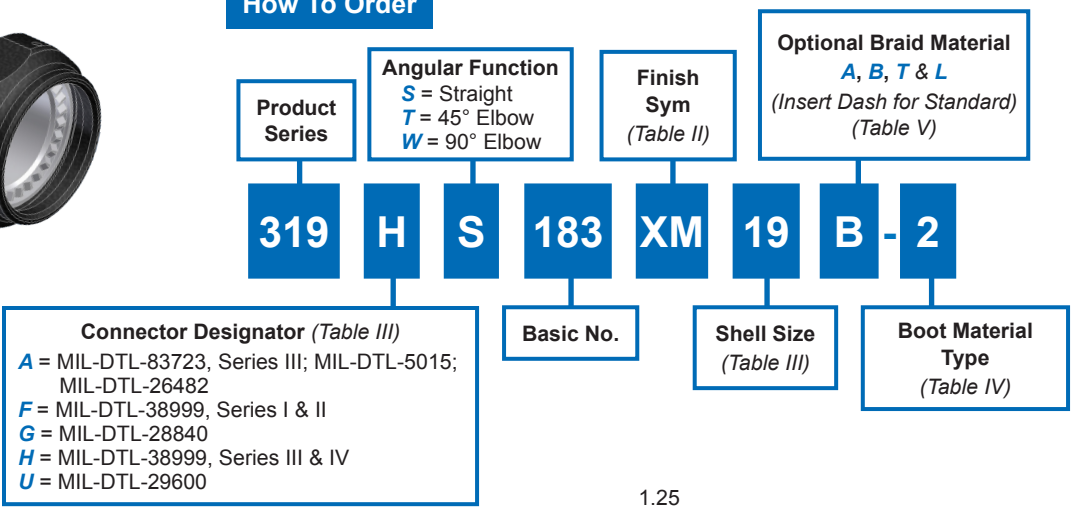
# 319-183 EMI/RFI Environmental Piggyback Boot Adapter, Composite with Integrated Shield Sock

## Fast and Easy Final Installation of Environmental Boots to Shield Sock Assemblies

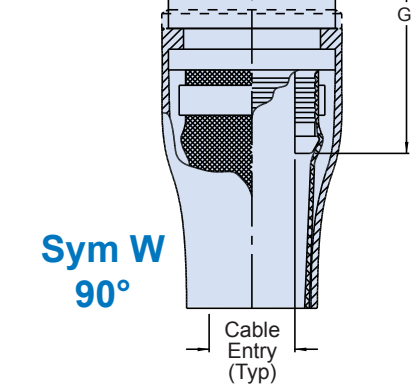


Cutaway View

### How To Order



Sym S - Straight



Sym W  
90°

### Material and Finish/Notes

- Elbow, Adapter: - High Grade Engineering Thermoplastic/See Table III
- Coupling Nut, Anti-Decoupling Device: High Grade Engineering Thermoplastic/N.A.
- O-Ring: Silicone/N.A.
- Braid: See Table IV
- Boot: See Table V
- Band: Cres

### Assembly Notes

- See Table I on page 3 for front-end dimensional details.
- Assembly identified with manufacturer's name and part number, space permitting.
- Glenair 600-091 or 600-157 Series Backshell Assembly Tools are recommended for assembly and installation.
- O-Ring supplied with Connector Designator F & H only.
- O-Ring not supplied with Connector Designator A.

# 319-183

## EMI/RFI Environmental Piggyback Boot Adapter, Composite

### with Integrated Shield Sock



Piggyback Shrink Boot Connector Adapters

**Table III: Shell Size**

Shell Size					A Thread	Ø C Max	D Flats	E .060 (1.5)	F .090 (2.3)	G .090 (2.3)	H .060 (1.5)	J .090 (2.3)	Cable Entry ± .03 (0.8)	L Max	M Min	N Max
A	F/L	G	H	U												
-	08	-	-	-	7/16-28 UNEF	.860 (21.8)	.750 (19.1)	.690 (17.5)	.880 (22.4)	1.19 (30.2)	.720 (18.3)	1.00 (25.4)	.250 (6.40)	2.36 (59.9)	0.26 (6.60)	.138 (3.51)
08	-	-	-	-	M12 X 1-6H											
-	-	-	-	09	1/2-20 UNEF	.980 (24.9)	.880 (22.4)	.750 (19.1)	1.00 (25.4)	1.25 (31.8)	.750 (19.1)	1.06 (26.9)	.380 (9.70)	2.36 (59.9)	0.38 (9.70)	.197 (5.00)
03	10	-	-	-	9/16-24 UNEF											
-	-	-	-	-	M15 X 1-6H	1.16 (29.5)	1.00 (25.4)	.810 (20.6)	1.13 (28.7)	1.31 (33.3)	.750 (19.1)	1.13 (28.7)	.500 (12.7)	2.83 (71.9)	0.51 (13.0)	.197 (5.00)
10	-	-	-	-	5/8-24 UNEF											
-	-	-	-	10	5/8-28 UN	1.28 (32.5)	1.13 (28.7)	.880 (22.4)	1.31 (33.3)	1.38 (35.1)	.760 (19.3)	1.16 (29.5)	.630 (16.0)	2.83 (71.9)	0.63 (16.0)	.236 (5.60)
-	12	-	-	-	11/16-24 UNEF											
-	-	-	-	11	M18 X 1-6H	1.41 (35.8)	1.25 (31.8)	.940 (23.9)	1.38 (35.1)	1.44 (36.6)	.780 (19.8)	1.18 (30.0)	.750 (19.1)	3.74 (95.0)	0.76 (19.3)	.236 (5.60)
12	-	-	-	-	3/4-20 UNEF											
-	-	-	-	12	3/4-28 UNS	1.52 (38.6)	1.38 (35.1)	.970 (24.6)	1.44 (36.6)	1.47 (37.3)	.790 (20.1)	1.19 (30.2)	.810 (20.6)	3.74 (95.0)	0.82 (20.8)	.276 (7.01)
-	14	-	-	-	13/16-20 UNEF											
-	-	-	-	13	M22 X 1-6H	1.64 (41.7)	1.50 (38.1)	1.06 (26.9)	1.63 (41.4)	1.56 (39.6)	.820 (20.8)	1.22 (31.0)	.940 (23.9)	3.74 (95.0)	0.94 (23.9)	.335 (8.51)
14	-	-	-	-	7/8-20 UNEF											
-	-	-	-	14	7/8-28 UNEF	1.77 (45.0)	1.63 (41.4)	1.13 (28.7)	1.75 (44.5)	1.63 (41.4)	.860 (21.8)	1.26 (32.0)	1.06 (26.9)	4.92 (125)	1.07 (27.2)	.394 (10.0)
-	16	-	-	-	15/16-20 UNEF											
-	-	-	-	15	M25 X 1-6H	1.89 (48.0)	1.75 (44.5)	1.19 (30.2)	1.88 (47.8)	1.69 (42.9)	.890 (22.6)	1.29 (32.8)	1.19 (30.2)	4.92 (125)	1.19 (30.2)	.394 (10.0)
16	-	-	-	-	1-20 UNEF											
-	-	-	-	16	1-28 UN	2.02 (51.3)	1.88 (47.8)	1.34 (34.0)	2.13 (54.1)	1.78 (45.2)	.920 (23.4)	1.32 (33.5)	1.38 (35.1)	4.92 (125)	1.38 (35.1)	.591 (15.0)
18	18	-	-	-	1 1/16-18 UNEF											
-	-	-	-	17	M28 X 1-6H	2.15 (54.6)	2.00 (50.8)	1.34 (34.0)	2.13 (54.1)	1.78 (45.2)	.920 (23.4)	1.32 (33.5)	1.38 (35.1)	4.92 (125)	1.38 (35.1)	.591 (15.0)
-	-	-	-	-	1 1/8-18 UNEF											
-	-	-	-	18	1 1/8-28 UNEF	2.02 (51.3)	1.88 (47.8)	1.34 (34.0)	2.13 (54.1)	1.78 (45.2)	.920 (23.4)	1.32 (33.5)	1.38 (35.1)	4.92 (125)	1.38 (35.1)	.591 (15.0)
20	20	-	-	-	1 3/16-18 UNEF											
-	-	-	-	19	M31 X 1 6H	2.15 (54.6)	2.00 (50.8)	1.34 (34.0)	2.13 (54.1)	1.78 (45.2)	.920 (23.4)	1.32 (33.5)	1.38 (35.1)	4.92 (125)	1.38 (35.1)	.591 (15.0)
-	-	-	-	-	1 1/4-18 UNEF											
-	-	-	-	19	1 1/4-28 UNEF	2.15 (54.6)	2.00 (50.8)	1.34 (34.0)	2.13 (54.1)	1.78 (45.2)	.920 (23.4)	1.32 (33.5)	1.38 (35.1)	4.92 (125)	1.38 (35.1)	.591 (15.0)
22	22	-	-	-	1 5/16-18 UNEF											
-	-	-	-	20	M34 X 1-6H	2.15 (54.6)	2.00 (50.8)	1.34 (34.0)	2.13 (54.1)	1.78 (45.2)	.920 (23.4)	1.32 (33.5)	1.38 (35.1)	4.92 (125)	1.38 (35.1)	.591 (15.0)
-	-	-	-	-	1 3/8-28 UN											
-	24	23	-	-	1 7/16-18 UNEF	2.15 (54.6)	2.00 (50.8)	1.34 (34.0)	2.13 (54.1)	1.78 (45.2)	.920 (23.4)	1.32 (33.5)	1.38 (35.1)	4.92 (125)	1.38 (35.1)	.591 (15.0)
61	-	-	-	-	M37 X 1-6H											
-	-	-	-	21	1 1/2-18 UNEF	2.15 (54.6)	2.00 (50.8)	1.34 (34.0)	2.13 (54.1)	1.78 (45.2)	.920 (23.4)	1.32 (33.5)	1.38 (35.1)	4.92 (125)	1.38 (35.1)	.591 (15.0)
-	-	-	-	-	1 1/2-18 UNEF											
-	-	-	-	22	1 1/2-28 UN	2.15 (54.6)	2.00 (50.8)	1.34 (34.0)	2.13 (54.1)	1.78 (45.2)	.920 (23.4)	1.32 (33.5)	1.38 (35.1)	4.92 (125)	1.38 (35.1)	.591 (15.0)
-	-	-	-	-	1 9/16-18 UNEF											
-	25	-	-	-	1/34-18 UNS	2.15 (54.6)	2.00 (50.8)	1.34 (34.0)	2.13 (54.1)	1.78 (45.2)	.920 (23.4)	1.32 (33.5)	1.38 (35.1)	4.92 (125)	1.38 (35.1)	.591 (15.0)
28	-	-	-	-	1/34-18 UNS											

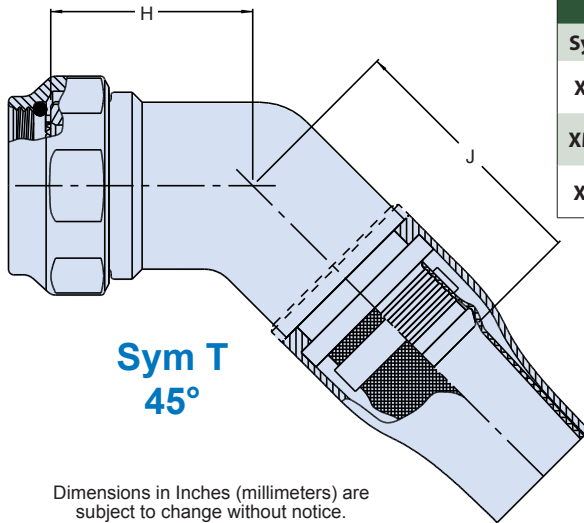
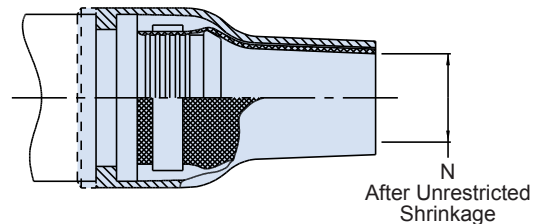


Table II: Backshell Finish Options	
Sym	Finish Description
XM	2000 Hour Corrosion Resistant Electroless Nickel
XMT	2000 Hour Corrosion Resistant NI-PTFE, Nickel-Fluorocarbon Polymer
XW	2000 Hour Corrosion Resistant Cadmium Olive Drab Over Electroless Nickel

Table V: Braided Shielding Options	
Symbol	Braid Type
A	100% AmberStrand®
B	75%/25% AmberStrand® Blend
-	Nickel/Copper 34 AWG
T	Tin/Copper 34 AWG
L	Armorlite™



**Table IV: Boot Material Selection Guide**

Attribute	Type 1 High-Performance Semi-Rigid Elastomer	Type 2 Zero-Halogen Semi-Rigid Polyolefin	Type 3 General Purpose Flexible Polyolefin
Continuous Operating Temp.	-75° To +150° c-	30° To +135° c-	55° To 135° c
Resistance To Fuels, Oils	Excellent	Very Good	Good
Low Toxicity, Zero Halogen	No	Yes	No