



RL-2505

SURFACE MOUNT CHIP INDUCTORS

DESCRIPTION

- Chip Inductors

ENVIRONMENTAL DATA

- Storage temperature range:
-40°C to +125°C
- Operating temperature range:
-40°C to +130°C

PACKAGING INFORMATION

- Packaging information: pg. 504
- Parts Marking is located on packaging

FEATURES & APPLICATIONS

- Offers over a hundred standard values of miniature inductors that are designed specifically for compact assemblies requiring surface mount components
- Can be supplied on reels for automated assemblies or in bulk packaging
- Standard 1008 package

Verify operation with sample in actual circuit. Order samples at www.rencousa.com.

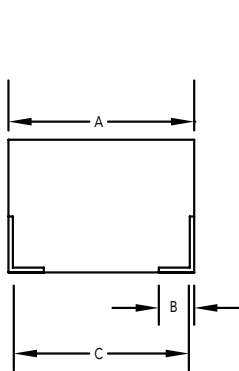
MECHANICAL DIMENSIONS

U.S. Standard (mm)

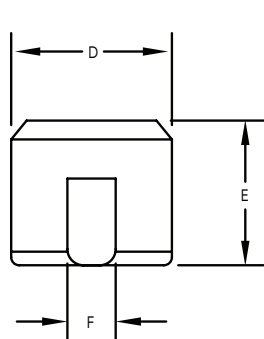
PART NUMBER	A (MAX.)	B ±0.004 (0.01)	C (MAX.)	D (MAX.)	E (MAX.)
RL-2505	0.107 (2.710)	0.018 (0.457)	0.087 (2.210)	0.079 (2.100)	0.059 (1.500)

PART NUMBER	PART WEIGHT	F (MAX.)	G (REF.)	H (REF.)	I (REF.)
RL-2505	0.10g (0.004oz)	0.059 (1.500)	0.080 (2.030)	0.064 (1.630)	0.038 (0.970)

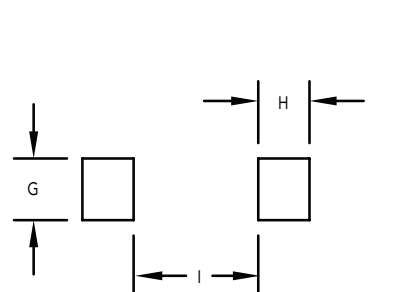
FRONT VIEW



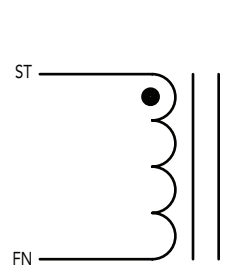
SIDE VIEW



RECOMMENDED LAND PATTERN



SCHEMATIC



RENCO ELECTRONICS INC.

595 International Place, Rockledge, FL 32955-4200 USA • www.rencousa.com • ISO 9001 Certified
Toll Free Engineering Hot Line: 800.645.5828 • P: 321.637.1000 • F: 321.637.1600



RL-2505

Renco Part No. RL-2505	Inductance (μ H)	DCR Max. (Ohms)	SRF (MHz) Min.	Q Typical Min.	Irms (mA)	Measuring Frequency (MHz)
RL-2505-0.12	0.12 \pm 10%	0.37	600.0	30.0	520.0	25.200
RL-2505-0.15	0.15 \pm 10%	0.42	550.0	30.0	480.0	25.200
RL-2505-0.18	0.18 \pm 10%	0.46	500.0	30.0	460.0	25.200
RL-2505-0.22	0.22 \pm 10%	0.52	450.0	30.0	430.0	25.200
RL-2505-0.27	0.27 \pm 10%	0.56	425.0	30.0	420.0	25.200
RL-2505-0.33	0.33 \pm 10%	0.60	400.0	30.0	400.0	25.200
RL-2505-0.39	0.39 \pm 10%	0.65	375.0	30.0	375.0	25.200
RL-2505-0.47	0.47 \pm 10%	0.68	350.0	30.0	350.0	25.200
RL-2505-0.56	0.56 \pm 10%	0.75	300.0	30.0	325.0	25.200
RL-2505-0.68	0.68 \pm 10%	0.85	270.0	30.0	300.0	25.200
RL-2505-0.82	0.82 \pm 10%	1.00	250.0	30.0	260.0	25.200
RL-2505-1.0	1.00 \pm 5%	1.10	220.0	30.0	245.0	7.960
RL-2505-1.2	1.20 \pm 5%	1.20	180.0	30.0	230.0	7.960
RL-2505-1.5	1.50 \pm 5%	1.30	135.0	30.0	220.0	7.960
RL-2505-1.8	1.80 \pm 5%	1.45	100.0	30.0	210.0	7.960
RL-2505-2.2	2.20 \pm 5%	1.55	75.0	30.0	200.0	7.960
RL-2505-2.7	2.70 \pm 5%	1.70	55.0	30.0	195.0	7.960
RL-2505-3.3	3.30 \pm 5%	1.90	48.0	30.0	185.0	7.960
RL-2505-3.9	3.90 \pm 5%	2.10	43.0	30.0	180.0	7.960
RL-2505-4.7	4.70 \pm 5%	2.30	40.0	30.0	175.0	7.960
RL-2505-5.6	5.60 \pm 5%	2.50	36.0	25.0	170.0	7.960
RL-2505-6.8	6.80 \pm 5%	2.70	33.0	25.0	165.0	7.960
RL-2505-8.2	8.20 \pm 5%	3.05	30.0	25.0	160.0	7.960
RL-2505-10	10.0 \pm 5%	3.50	27.0	25.0	155.0	7.960
RL-2505-12	12.0 \pm 5%	3.80	23.0	25.0	150.0	2.520
RL-2505-15	15.0 \pm 5%	4.40	20.0	25.0	140.0	2.520
RL-2505-18	18.0 \pm 5%	4.80	18.0	25.0	130.0	2.520
RL-2505-22	22.0 \pm 5%	5.50	17.0	25.0	125.0	2.520
RL-2505-27	27.0 \pm 5%	6.30	16.0	25.0	115.0	2.520
RL-2505-33	33.0 \pm 5%	7.10	15.0	25.0	110.0	2.520
RL-2505-39	39.0 \pm 5%	9.50	14.0	20.0	90.0	2.520
RL-2505-47	47.0 \pm 5%	11.10	13.0	20.0	80.0	2.520
RL-2505-56	56.0 \pm 5%	12.10	12.0	20.0	75.0	2.520
RL-2505-68	68.0 \pm 5%	16.60	11.0	20.0	70.0	2.520
RL-2505-82	82.0 \pm 5%	19.00	10.0	20.0	65.0	2.520
RL-2505-100	100.0 \pm 5%	21.00	9.0	15.0	60.0	0.796

NOTES:

1. ELECTRICAL SPECIFICATIONS MEASURED AT 25°C
2. Irms - CURRENT THAT CAUSES THE TEMPERATURE TO RISE APPROX. 20°C ABOVE AMBIENT OF 25°C

**ORDERING INFORMATION:
PART NUMBER SYSTEM**

RL-2505-XXX-XX

"T" OR "B" FOR TAPE
OR BULK PACKAGING

ORDER QUANTITY: 2,000 PIECES FOR TAPE AND
REEL, ANY QUANTITY FOR BULK PACKAGING

INDUCTANCE VALUE



RENCO ELECTRONICS INC.

595 International Place, Rockledge, FL 32955-4200 USA • www.rencousa.com • ISO 9001 Certified
Tdl Free Engineering Hot Line: 800.645.5828 • P: 321.637.1000 • F: 321.637.1600

