

# 6 GHz True RMS Power Meter with Bus-Powered USB Connectivity

## NI USB-5680 **NEW!**

- True RMS power measurements
- Diode power meter
- -40 to +23 dBm power range
- 50 MHz to 6 GHz frequency range
- 10 and 100 Hz typical channel bandwidth
- $\pm 0.13$  dB accuracy at  $< +18$  dBm
- $\pm 0.18$  dB accuracy at  $\geq +18$  dBm
- Internal zeroing capability
- $< 3$  percent sensor linearity
- Standing wave ratio  $< 1.2$  to 6 GHz
- 100 mA typical power consumption
- USB bus connectivity
- N-type connector

### Operating System

- Windows Vista/XP/2000

### Recommended Software

- LabVIEW
- LabWindows™/CVI

### Driver Software (included)

- NI-568x

### Calibration

- Gain and offset self-calibration
- 1-year external calibration cycle



>> For complete specifications, visit [ni.com/manuals](http://ni.com/manuals) and search for *USB-5680 Specifications*.

## Overview

The National Instruments USB-5680 is a 6 GHz true RMS (root-mean-square) power meter that features high measurement accuracy and wide dynamic range. As a true RMS power meter, the NI USB-5680 is ideal for measuring the power of continuous wave (CW) signals. In addition, it offers better than  $\pm 0.18$  dB of linearity across all frequency ranges and all power levels. This functionality, combined with a flexible API, makes it ideal for measuring path loss in automated test applications. In addition, its small size (less than 9.6 cubic in.) frees up valuable rack space without sacrificing performance. One of the biggest benefits of the USB-5680 is its USB connectivity. Powered solely from the USB cable, it consumes only 100 mA of current. Thus, you can use this power meter in both production test and field applications with a laptop. Moreover, USB connectivity helps you easily integrate the power meter with PC and PXI systems in an automated test environment.

## Architecture

The USB-5680 RF power meter features a dual-path architecture to achieve 63 dB of dynamic range. This architecture improves power measurement accuracy by ensuring that the diode sensors are used in their most linear region. A block diagram of the USB-5680 architecture is shown in Figure 1.

As Figure 1 shows, the first measurement range is from -5 to +23 dBm and the second is from -40 to -5 dBm. This accounts for a combined dynamic range of -40 to +23 dBm with a single power head.

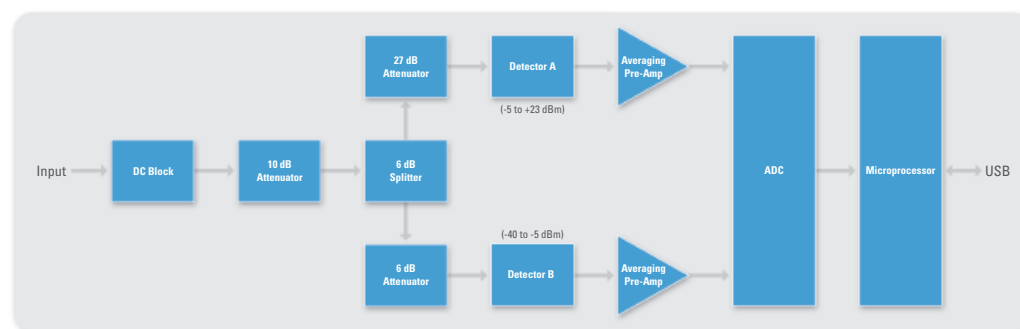


Figure 1. Block Diagram of the NI USB-5680

# 6 GHz True RMS Power Meter with Bus-Powered USB Connectivity

## Flexible Software

You can operate the USB-5680 as a benchtop instrument or as an automated measurement device. For benchtop use, the soft front panel (see Figure 2) helps you configure multiple instrument settings on the fly. This program runs in Windows Vista, Windows XP, and Windows 2000 operating systems.



Figure 2. Soft Front Panel Screenshot

As Figure 2 illustrates, the soft front panel not only returns power measurements but also helps you configure settings such as autozero, number of averages, and predetermined power offsets.

In addition, you can fully program the USB-5680 with the NI-568x driver in languages such as LabVIEW, LabWindows/CVI, C, C++, and .NET. Using the NI-568x driver, you can fully control the instrument and integrate it into existing automated test applications. A screenshot of the API is shown in Figure 3.

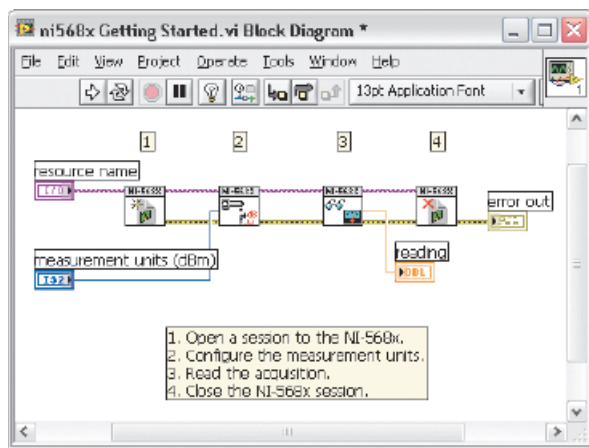


Figure 3. NI-568x Driver API Screenshot

## Absolute Accuracy

Power meter linearity is one of the most important characteristics of a power meter because it greatly influences absolute accuracy. In addition, linearity is dependent on the power level of the signal you are measuring. As Table 1 illustrates, you can use the power meter in its

most linear region when power levels are less than 18 dBm. Thus, the sensor is able to provide more accurate measurements at this power

Power level <18 dBm	±0.13 dB
Power level ≥18 dBm	±0.18 dB

Table 1. Sensor Linearity According to Power Level

level. Linearity across all power levels is illustrated in Table 1.

Note that sensor linearity is only one of many factors that contribute to the absolute accuracy of an RF power measurement. Because impedance mismatch (standing wave ratio, or SWR) and noise can also add uncertainty, it is important to consider all of these characteristics when determining overall measurement uncertainty. National Instruments recommends downloading the Power Uncertainty Calculator on the USB-5680 product page at [ni.com](http://ni.com) to determine your absolute measurement accuracy.

With the uncertainty calculator, you can enter signal characteristics such as power, frequency, and signal type. You also can enter measurement characteristics such as number of averages and aperture mode. In addition to providing the absolute accuracy, the uncertainty calculator highlights individual sources of error. As Figure 5 shows, you can attribute an absolute accuracy of 4.45 percent to a wide range of

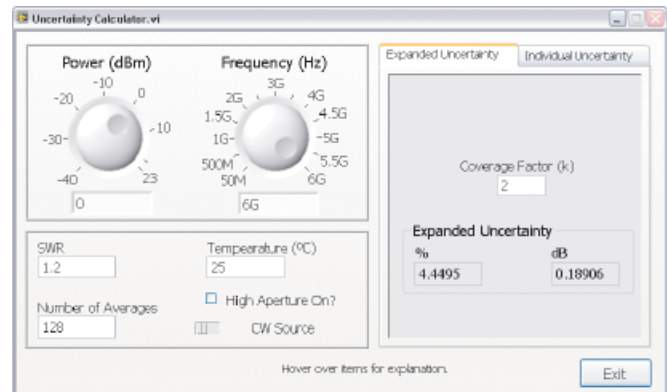


Figure 4. USB-5680 Uncertainty Calculator Screenshot

factors, the most significant of which include sensor nonlinearity and mismatch uncertainty.

Note that the USB-5680 uses an internal auto-zero calibration routine to reduce errors associated with zero offsets. To do this, an internal

Sensor Linearity	Noise
1.7543	0.02
Calibration	Zero Drift
0.69557	0.025
Digital Modulation	Zero Set
0	0.00815
Mismatch Unc.	Temp. Compensation
1.1735	0
All values in %	

Figure 5. Expanded Sources of Error from the USB-5680 Uncertainty Calculator

source is used to calibrate the power meter, and external connectivity is not required.

## 6 GHz True RMS Power Meter with Bus-Powered USB Connectivity

### Averaging and Noise Level

Because noise can have a significant effect on the accuracy of RMS power measurements, settings such as aperture time and averaging are often employed to mitigate the effects of noise on measurement accuracy.

To improve flexibility, the USB-5680 features two aperture time settings to offer both high-speed and high-accuracy options. In “Low-Aperture” mode, the power meter features 15 measurements per second and in “High-Aperture” mode, the USB-5680 features 1 measurement per second. With these two options, you can choose the aperture mode and, number of averages to obtain the desired noise level of measurement. Table 2 shows the number of averages required in both aperture modes to achieve less than  $\pm 0.10$  and  $\pm 0.01$  dB noise levels.

### High-Aperture Mode

Input Power (dBm)	Input Power (mW)	Number of Averages Needed for $<\pm 0.10$ dB Noise	Number of Averages Needed for $<\pm 0.01$ dB Noise
>0	>1.00	1	1
-5	0.32	1	5
-10	0.100	1	1
-15	0.032	1	1
-20	0.0100	1	1
-25	0.0032	1	4
-30	0.00100	1	38
-35	0.00032	4	—
-40	0.000100	39	—

Table 2. Number of Averages, High-Aperture Time Mode

### Low-Aperture Mode

Input Power (dBm)	Input Power (mW)	Number of Averages Needed for $<\pm 0.10$ dB Noise	Number of Averages Needed for $<\pm 0.01$ dB Noise
>10	>10.0	1	1
5	3.2	1	2
0	1.0	1	16
-5	0.32	1	78
-10	0.10	1	1
-15	0.032	1	1
-20	0.010	1	7
-25	0.0032	1	61
-30	0.0010	7	—
-35	0.00032	62	—
-40	0.000100	—	—

Table 3. Number of Averages, Low-Aperture Time Mode

### Ordering Information

NI USB-5680 .....780167-01  
 Includes NI-568x driver featuring soft front panel and API for LabVIEW, LabWindows/CVI, C, C++, and .NET.

### BUY NOW!

For complete product specifications, pricing, and accessory information, call 800 813 3693 (U.S.) or go to [ni.com/rf](http://ni.com/rf).

# NI Services and Support



NI has the services and support to meet your needs around the globe and through the application life cycle – from planning and development through deployment and ongoing maintenance. We offer services and service levels to meet customer requirements in research, design, validation, and manufacturing. Visit [ni.com/services](http://ni.com/services).

## Training and Certification

NI training is the fastest, most certain route to productivity with our products. NI training can shorten your learning curve, save development time, and reduce maintenance costs over the application life cycle. We schedule instructor-led courses in cities worldwide, or we can hold a course at your facility. We also offer a professional certification program that identifies individuals who have high levels of skill and knowledge on using NI products. Visit [ni.com/training](http://ni.com/training).

## Professional Services

Our NI Professional Services team is composed of NI applications and systems engineers and a worldwide National Instruments Alliance Partner program of more than 600 independent consultants and

integrators. Services range from start-up assistance to turnkey system integration. Visit [ni.com/alliance](http://ni.com/alliance).



## OEM Support

We offer design-in consulting and product integration assistance if you want to use our products for OEM applications. For information about special pricing and services for OEM customers, visit [ni.com/oem](http://ni.com/oem).

## Local Sales and Technical Support

In offices worldwide, our staff is local to the country, giving you access to engineers who speak your language. NI delivers industry-leading technical support through online knowledge bases, our applications engineers, and access to 14,000 measurement and automation professionals within NI Developer Exchange forums. Find immediate answers to your questions at [ni.com/support](http://ni.com/support).

We also offer service programs that provide automatic upgrades to your application development environment and higher levels of technical support. Visit [ni.com/ssp](http://ni.com/ssp).

## Hardware Services

### NI Factory Installation Services

NI Factory Installation Services (FIS) is the fastest and easiest way to use your PXI or PXI/SCXI combination systems right out of the box. Trained NI technicians install the software and hardware and configure the system to your specifications. NI extends the standard warranty by one year on hardware components (controllers, chassis, modules) purchased with FIS. To use FIS, simply configure your system online with [ni.com/pxiadvisor](http://ni.com/pxiadvisor).

### Calibration Services

NI recognizes the need to maintain properly calibrated devices for high-accuracy measurements. We provide manual calibration procedures, services to recalibrate your products, and automated calibration software specifically designed for use by metrology laboratories. Visit [ni.com/calibration](http://ni.com/calibration).

### Repair and Extended Warranty

NI provides complete repair services for our products. Express repair and advance replacement services are also available. We offer extended warranties to help you meet project life-cycle requirements. Visit [ni.com/services](http://ni.com/services).



[ni.com](http://ni.com) • 800 813 3693

National Instruments • [info@ni.com](mailto:info@ni.com)

