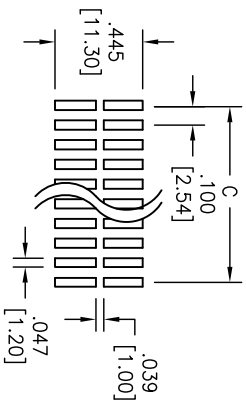
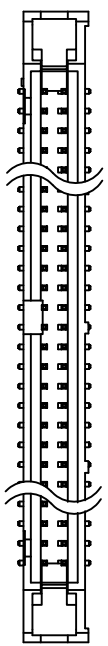
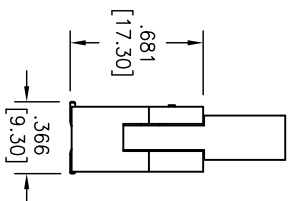
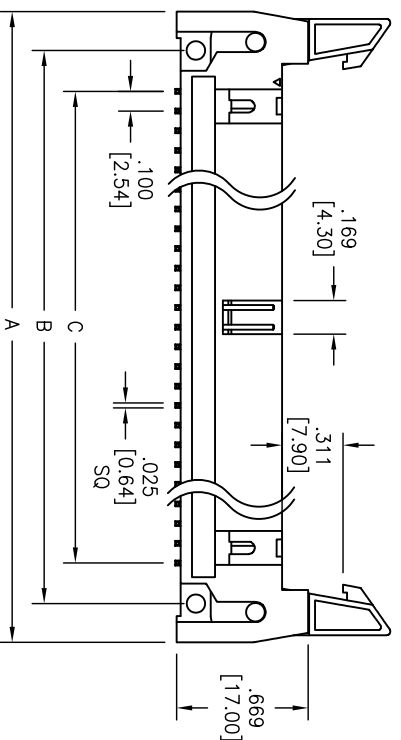


Rev	AWO #	Description	Date	Appr
-		RELEASED	1/6/12	

APPROVED: _____
 DATE: _____ TITLE: _____



RECOMMENDED PCB LAYOUT



Positions	DIM. A	DIM. B	DIM. C
10	1.255 [31.88]	.853 [21.66]	.400 [10.16]
14	1.573 [36.96]	1.050 [26.67]	.600 [15.24]
16	1.555 [39.50]	1.154 [29.30]	.700 [17.78]
20	1.755 [44.58]	1.354 [34.38]	.900 [22.86]
24	1.955 [49.66]	1.554 [39.46]	1.100 [27.94]
26	2.055 [52.20]	1.654 [42.00]	1.200 [30.48]
30	2.255 [57.28]	1.854 [47.08]	1.400 [35.56]
34	2.455 [62.36]	2.054 [52.16]	1.600 [40.64]
40	2.755 [69.98]	2.354 [59.78]	1.900 [48.26]
50	3.255 [82.68]	2.854 [72.48]	2.400 [60.96]
60	3.755 [95.38]	3.354 [85.18]	2.900 [73.66]
64	3.955 [100.46]	3.554 [90.26]	3.100 [78.74]

SPECIFICATIONS:

Material:

Insulator: Hi-temp thermoplastic, rated UL 94V-0

Insulator color: Black

Contacts: Brass

Plating:

Gold flash over Nickel underplate overall

Electrical:

Operating voltage: 250 VAC max

Current rating: 3 Amps max

Contact resistance: 20 mohms max

Insulation resistance: 5,000 Mohms min @ 500 VDC

Dielectric withstanding voltage: 1,000 VAC for 1 minute

Temperature Rating:

Operating temperature: -55°C to +105°C

Environmental:

Lead free, RoHS compliant

UNLESS OTHERWISE SPECIFIED ALL DIMENSIONS ARE INCHES [MM] TOLERANCES: EXCEPT AS NOTED			
.X	±.10	ØXX	±.015
.XX	±.020	ØXXX	±.010
.XXX	±.015	ØXXXX	±.010
APPROVALS		DATE	
DRAWN	AY	1/6/12	
CHECKED	CC	1/6/12	
APPROVED			

ADAM TECH

909 Rahway Avenue, Union, NJ 07083
 Phone: 908-687-5000 Fax: 908-687-5710

TITLE: 100 [2.54] SHROUDED HEADER W/ LONG LATCHES, VERTICAL
 SMT, 2 ROW, GOLD PLATED

SIZE	PART NO.	SCALE	SHEET	REV.
X	MHR-XX-VUAL-SMT	NIS	1 OF 1	-

