

PLEASE CHECK WWW.MOLEX.COM FOR LATEST PART INFORMATION

Part Number: **0768503008**
Status: **Active**
Overview: Impact™ Backplane Connector and Cable Assembly System
Description: Impact™ 100 Ohm 4 Pair Right Angle Orthogonal Daughtercard, Left Guide, 8 Columns, 96 Circuits, Plated Through Hole Dimension 0.46mm, Lead-Free

Documents:

3D Model	Application Specification AS-76850-990-001 (PDF)
Drawing (PDF)	Packaging Specification PK-70873-610 (PDF)
Product Specification PS-76060-999-001 (PDF)	RoHS Certificate of Compliance (PDF)
Application Specification AS-76060-9999-001 (PDF)	

Agency Certification

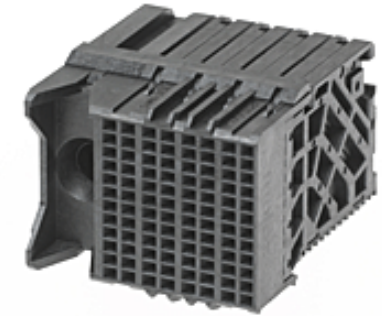
UL E29179

General

Product Family	Backplane Connectors
Series	<u>76850</u>
Application	Daughtercard, Orthogonal, Orthogonal Direct, Orthogonal Midplane
Application Tooling Documents	TM-622018799
Component Type	PCB Receptacle
Electrical Model	Yes
Overview	Impact™ Backplane Connector and Cable Assembly System
Product Name	Impact™
UPC	884982297760

Physical

Circuits (Loaded)	96
Circuits (maximum)	96
Color - Resin	Black
Durability (mating cycles max)	200
First Mate / Last Break	No
Flammability	94V-0
Guide to Mating Part	Yes
Keying to Mating Part	None
Material - Metal	High Performance Alloy (HPA)
Material - Plating Mating	Gold
Material - Plating Termination	Tin
Material - Resin	High Temperature Thermoplastic
Net Weight	13.193/g
Number of Columns	8
Number of Pairs	4
Number of Rows	12
Orientation	Right Angle
PC Tail Length	1.20mm
PCB Locator	No
PCB Retention	None
PCB Thickness - Recommended	1.00mm
Packaging Type	Tray
Pitch - Mating Interface	1.90mm, 2.15mm
Pitch - Termination Interface	1.90mm, 2.15mm
Plating min - Mating	0.762µm
Polarized to PCB	Yes
Stackable	No
Surface Mount Compatible (SMC)	No



Series image - Reference only

EU ELV

Not Reviewed

EU RoHS

Not Reviewed

China RoHS

REACH SVHC

Not Reviewed

Halogen-Free

Status

Not Reviewed

Need more information on product environmental compliance?

Email productcompliance@molex.com
Please visit the [Contact Us](#) section for any non-product compliance questions.

China ROHS	Not Reviewed
ELV	Not Reviewed
RoHS Phthalates	Not Reviewed

Search Parts in this Series

76850 Series

Mates With

76845 Impact™ 100 Ohm Backplane Header

Application Tooling | FAQ

Tooling specifications and manuals are found by selecting the products below. Crimp Height Specifications are then contained in the Application Tooling Specification document.

Global

Description	Product #
Press-In Tool for Daughter Card Module	<u>0622018677</u>
Impact Daughter Card Extraction Tool	<u>0622024300</u>

Temperature Range - Operating -55°C to +85°C
Termination Interface: Style Through Hole - Compliant Pin

Electrical

Current - Maximum per Contact 0.75A
Data Rate 25.0 Gbps
Impedance 100Ω
Shield Type N/A
Shielded No
Voltage - Maximum 30V AC (RMS)/DC

Material Info

Reference - Drawing Numbers

Application Specification AS-76060-9999-001, AS-76850-990-001
Electrical Model Document EE-76850-049, EE-76850-055
Packaging Specification PK-70873-610
Product Specification PS-76060-999-001
S-Parameter Model SP-76850-049
Sales Drawing RSD-76850-012, SD-76850-002
Symbol/Footprint Data SYM-76850-3008

This document was generated on 11/16/2016

PLEASE CHECK WWW.MOLEX.COM FOR LATEST PART INFORMATION