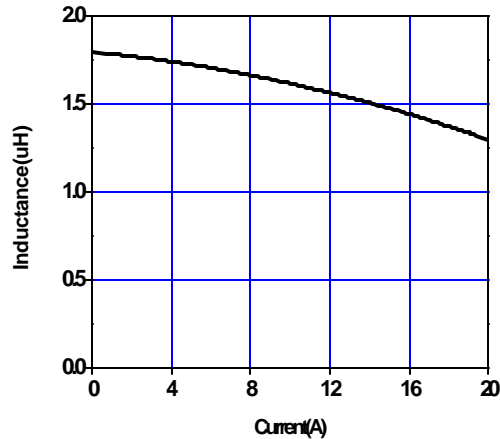
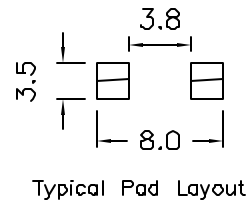
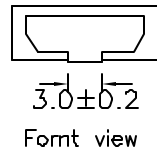
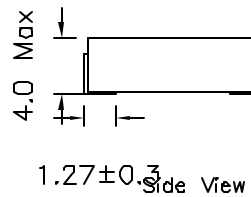
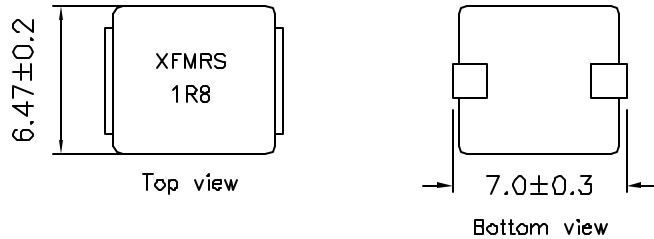
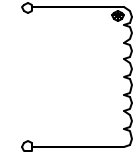


1. Mechanical Dimensions:



2. Schematic:



3. Electrical Specifications:

INDUCTANCE: 1.8uH±20% @100KHz 0.1V

Q: 20 Min @100KHz 0.1V

DC Res: 15 mOhms Max

Irms: 9A Typ (Based on 40°C Temp Rise)

I_{sat}: 16A Typ (Based on 20% drop in OCL)

Notes:

- Solderability: Leads shall meet MIL-STD-202G, Method 208H for solderability.
- Flammability: UL94V-0
- ASTM oxygen index: > 28%
- Insulation System: Class F 155°C, UL file E151558
- Operating Temperature Range: All listed parameters are to be within tolerance from -55°C to +120°C
- Storage Temperature Range: -55°C to +125°C
- Aqueous wash compatible
- SMD Lead Coplanarity: ±0.004" (0.102mm)
- Electrical and mechanical specifications 100% tested
- RoHS Compliant Component

XFMRS Inc www.XFMRS.com	Title: HIGH CURRENT INDUCTOR		
	UNLESS OTHERWISE SPECIFIED	P/N:XFHCL6MA-1R8M	REV. A
TOLERANCES: .xx ±0.010	DWN.	Juan mao	Jun-03-08
Dimensions in INCH	CHK.	YK Liao	Jun-03-08
SHEET 1 OF 1	APP.	Joe Huff	Jun-03-08

DOC REV: A/2

PROPRIETARY Document is the property of XFMRS Group & is not allowed to be duplicated without authorization.