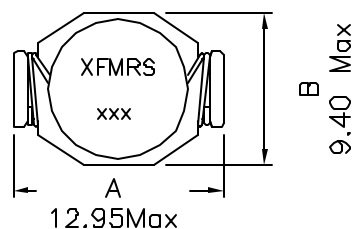
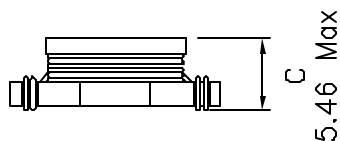


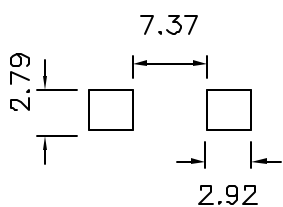
XFS1MDR5137 SERIES INDUCTORS



TOP VIEW

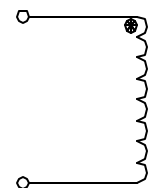


SIDE VIEW



PCB LAYOUT

Schematic:



UNLESS OTHERWISE SPECIFIED

TOLERANCES:

.xxx ±0.010

.xx ±0.25

Dimensions in INCH
in MM

Part Number	Inductance (1) (uH±20%)	DCR Max (mOHM)	I _{rated} (6) (A)	I _{SAT} (2) (A) @25°C	I _{rms} (3) (A rms)
XFS1MDR5137-102	1.0	10	6.8	9.0	6.8
XFS1MDR5137-152	1.5	12	6.4	8.0	6.4
XFS1MDR5137-222	2.2	15	6.1	7.0	6.1
XFS1MDR5137-332	3.3	18	5.4	6.4	5.4
XFS1MDR5137-472	4.7	33	4.8	5.4	4.8
XFS1MDR5137-682	6.8	44	4.4	4.6	4.4
XFS1MDR5137-103	10	50	3.8	3.8	3.9
XFS1MDR5137-153	15	55	3.0	3.0	3.1
XFS1MDR5137-223	22	114	2.6	2.6	2.7
XFS1MDR5137-333	33	120	2.0	2.0	2.1
XFS1MDR5137-473	47	168	1.6	1.6	1.8
XFS1MDR5137-683	68	240	1.4	1.4	1.5
XFS1MDR5137-104	100	380	1.2	1.2	1.3
XFS1MDR5137-154	150	570	1.0	1.0	1.0
XFS1MDR5137-224	220	840	0.8	0.8	0.8
XFS1MDR5137-334	330	1020	0.6	0.6	0.6
XFS1MDR5137-474	470	1460	0.5	0.5	0.5
XFS1MDR5137-684	680	2170	0.4	0.4	0.4
XFS1MDR5137-105	1000	3300	0.3	0.3	0.3

(1) Inductance test @100KHz 0.1Vrms With No DC

(2) Inductance drop = 10% typ at rated Isat.

(3) ΔT=15°C rise typ. at I_{rms}.

(4) Operating temperature range -40°C to +125°C

(5) Flammability Rating: UL94V-0

(6) Rated current is the lower of the saturation or heating current

(7) Tape & Reel Packaging Standard, 650 Pcs per 13' Reel