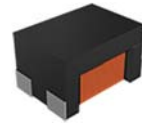


Wire Wound Chip Common Mode Choke Coil –AMCW-F Series

Operating Temp. : -40°C~+150°C



FEATURES

- Winding type, small size and low profile
- Manufactured with fully-automated processes for high reliability and consistent quality
- Excellent solderability
- AEC-Q200 verified

APPLICATIONS

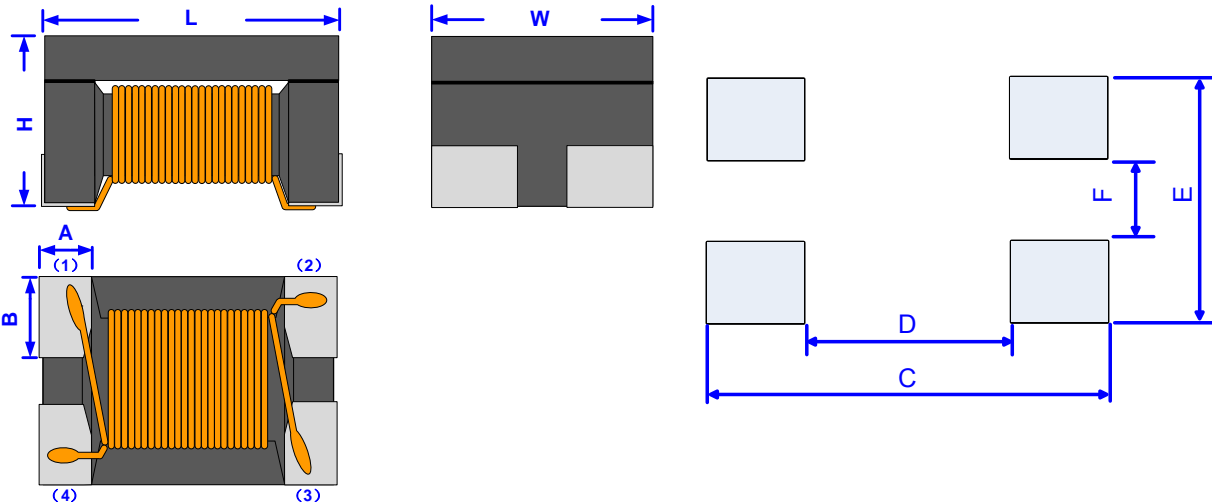
- Automotive CAN-FD system

PRODUCT IDENTIFICATION

① AMCW	② 4532	③ F	④ -2	⑤ -101	⑥ T														
<table border="1"> <tr><th colspan="2">Type</th></tr> <tr><td>AMCW</td><td>Winding Type Common Mode Choke Coil</td></tr> </table>		Type		AMCW	Winding Type Common Mode Choke Coil	<table border="1"> <tr><th colspan="2">External Dimensions (L×W) (mm)</th></tr> <tr><td>4532 [1812]</td><td>4.5×3.2</td></tr> <tr><td>3225[1210]</td><td>3.2×2.5</td></tr> </table>		External Dimensions (L×W) (mm)		4532 [1812]	4.5×3.2	3225[1210]	3.2×2.5	<table border="1"> <tr><th colspan="2">Code</th></tr> <tr><td>F</td><td>for CAN-FD</td></tr> </table>		Code		F	for CAN-FD
Type																			
AMCW	Winding Type Common Mode Choke Coil																		
External Dimensions (L×W) (mm)																			
4532 [1812]	4.5×3.2																		
3225[1210]	3.2×2.5																		
Code																			
F	for CAN-FD																		
<table border="1"> <tr><th colspan="2">Nominal Inductance</th></tr> <tr><th>Example</th><th>Nominal Value</th></tr> <tr><td>101</td><td>100μH</td></tr> </table>		Nominal Inductance		Example	Nominal Value	101	100μH	<table border="1"> <tr><th colspan="2">Number of Lines</th></tr> <tr><td colspan="2">2</td></tr> </table>		Number of Lines		2		<table border="1"> <tr><th colspan="2">Packing</th></tr> <tr><td>T</td><td>Tape & Reel</td></tr> </table>		Packing		T	Tape & Reel
Nominal Inductance																			
Example	Nominal Value																		
101	100μH																		
Number of Lines																			
2																			
Packing																			
T	Tape & Reel																		

SHAPE AND DIMENSIONS

Recommended Land Pattern



Unit: mm

Series	L	H	W	A	B	C	D	E	F
AMCW4532F	4.50±0.20	2.30±0.20	3.20±0.20	1.00	1.25	5.50	2.90	3.20	0.70
AMCW3225F	3.20±0.20	2.20±0.20	2.50±0.20	0.70	1.05	4.10	2.00	2.50	0.40

SPECIFICATIONS

AMCW4532F TYPE

Part Number	Inductance @100KHz/0.1V	DC Resistance	Rated Current	Rated Voltage	Insulation Resistance
	+50%/-30%	Max.	Max.	Max.	Min.
Units	μH	Ω	mA	Volts	$\text{M}\Omega$
Symbol	L	DCR	I _{rms}	V _{DC}	IR
AMCW4532F-2-101T	100	2.0	200	50	10

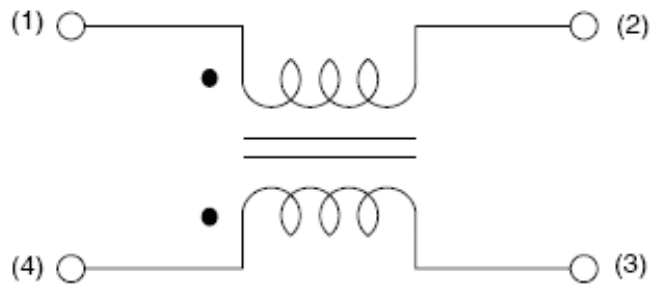
AMCW3225F TYPE

Part Number	Inductance @100KHz/0.1V	DC Resistance	Rated Current	Rated Voltage	Insulation Resistance
	+50%/-30%	Max.	Max.	Max.	Min.
Units	μH	Ω	mA	Volts	$\text{M}\Omega$
Symbol	L	DCR	I _{rms}	V _{DC}	IR
AMCW3225F-2-101T	100	2.5	150	50	10

1 .Storage temperature range (packaging conditions): -10°C~+40°C and RH 70% (Max.)

※: Products with other electrical characteristics can be provided upon customer's request. Please contact your local sales.

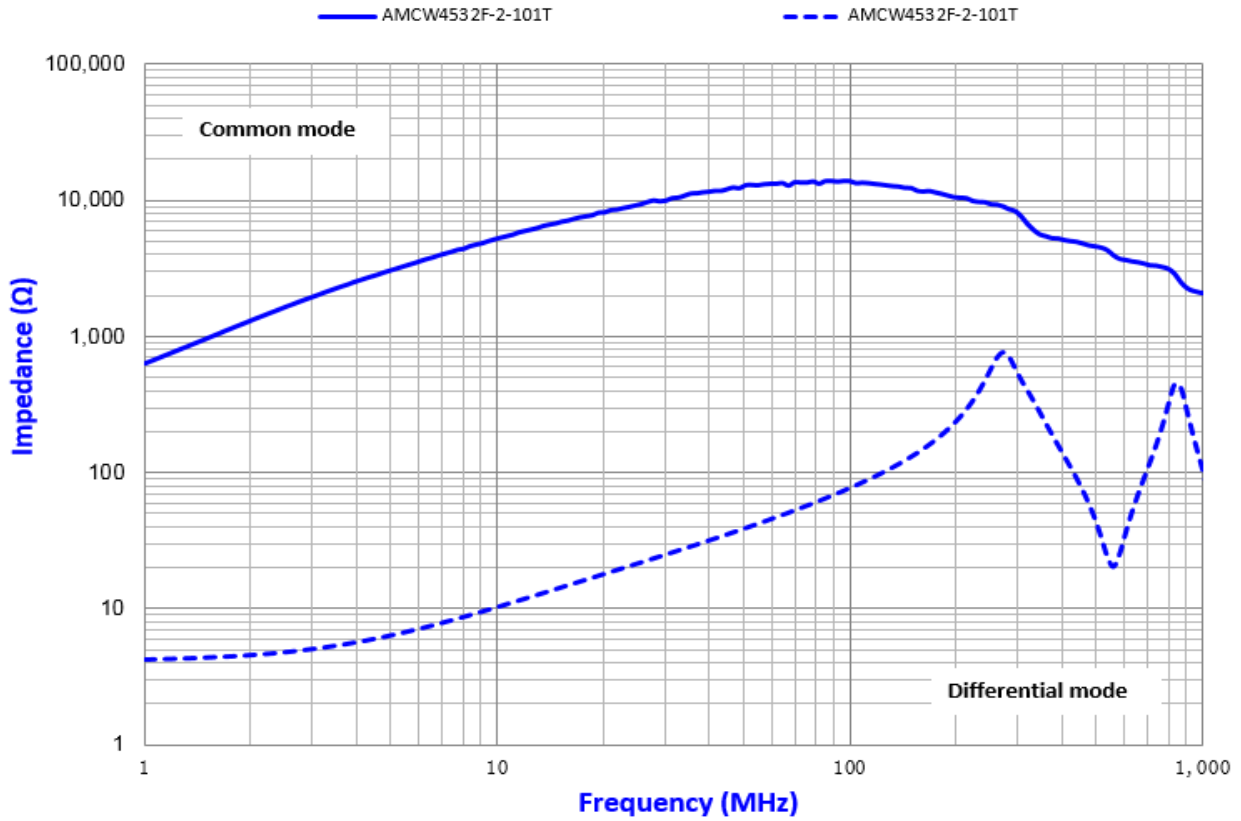
EQUIVALENT CIRCUIT



TYPICAL ELECTRICAL CHARACTERISTICS

Impedance vs. Frequency

AMCW4532F TYPE



AMCW3225F TYPE

