

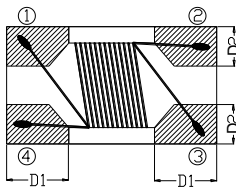
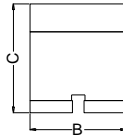
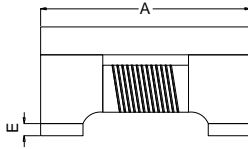
# Wire Wound Type Common Mode Filter

WCM2012F2SF-900T04-H

1. High common mode impedance at high frequency cause excellent noise suppression performance.
2. WCM2012F2SF series realizes small size and low profile. 2.0x1.2x1.2 mm.
3. 100% Lead(Pb) & Halogen-Free and RoHS compliant.
4. Operating temperature -40~+125°C (Including self - temperature rise)
5. FOR LAN Module application.



## 2. Dimension



Series	A(mm)	B(mm)	C(mm)	D1(mm)	D2(mm)	E(mm)
2012F2SF	2.0±0.2	1.2±0.2	1.2±0.2	0.50±0.1	0.51±0.1	0.15±0.1

## 3. Part Numbering

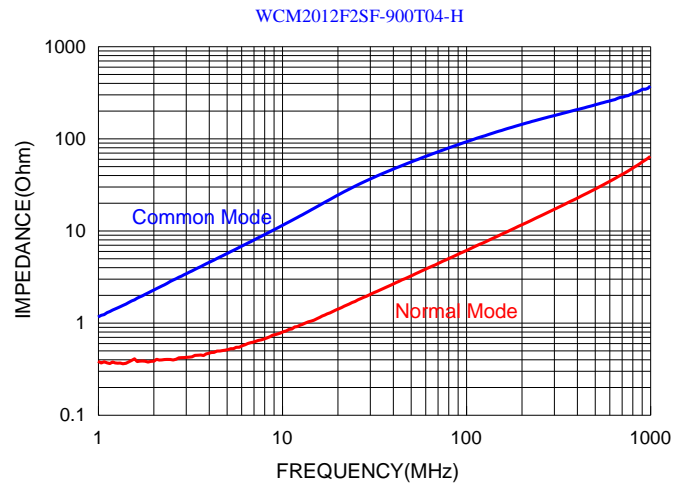


- A: Series
- B: Dimension
- C: Material                      Ferrite Core
- D: Number of Lines            2=2 lines
- E: Type                            S=Shielded , N=Unshielded
- F: Lead free
- G: Impedance                    900=90Ω
- H: Packaging                      T=Taping and Reel
- I: Rated Current                04=400mA
- J: Control S/N

## 4. Specification

TAI-TECH Part Number	Common mode Impedance (Ω)	Test Frequency (MHz)	DC Resistance (Ω) max.	Rated Current (mA)max.	Rated Volt. (Vdc)max.	Withstand Volt. (Vdc) max.	IR (Ω) min.
WCM2012F2SF-900T04-H	90±25%	100	0.30	400	50	125	10M

### Typical Impedance v.s. Frequency Curve



### 5. Schematic Diagram

