

ATLANTIC VERSION TERMINATOR INTERFACE ADAPTER	PART NUMBER	REVISION	DESCRIPTION	FEED TYPE	APPLICATOR STYLE CONVERSION CHART							
					CONVERT TO	PART NUMBERS REQUIRED						2063440-1
						2119950-1	1338685-1	5-18022-5	2119641-1	2119799-1	2168400-6 (QUANTITY 2)	
	2266673-1	G	FINE CRIMP HEIGHT ADJUST	MECHANICAL	PNEUMATIC FEED	2119950-1	1338685-1	5-18022-5	2119641-1	2119799-1	2063440-1	
					SERVO LATCH PLATE	2119951-1	-	8-2266673-5	1901094-3	1-1752354-6	2168400-6 (QUANTITY 2)	
					SMART APPLICATOR	2161326-1	-	8-2266673-4	-	-	-	
2266673-2	G	FINE CRIMP HEIGHT ADJUST	PNEUMATIC	DOUBLE ACTING	2119950-2	1338685-1	5-18022-5	-	2119799-1	1803430-1		
				MECHANICAL FEED	2119949-1	1338685-1	5-18022-5	2119653-1	-	-		
				SERVO LATCH PLATE	2119951-1	-	8-2266673-5	1901094-3	1-1752354-6	2168400-6 (QUANTITY 2)		
2266673-5	G	FINE CRIMP HEIGHT ADJUST	SERVO LATCH PLATE	SMART APPLICATOR	2161326-1	-	8-2266673-4	-	-	-		
				DOUBLE ACTING	2119950-2	1338685-1	5-18022-5	-	2119799-1	1803430-1		
				MECHANICAL FEED	2119949-1	1338685-1	5-18022-5	2119653-1	-	-		
2266673-6	G	NON-CRIMP HEIGHT ADJUST	SERVO LATCH PLATE	PNEUMATIC FEED	2119950-1	1338685-1	5-18022-5	2119641-1	2119799-1	2063440-1		
				DOUBLE ACTING	2119950-2	1338685-1	5-18022-5	-	2119799-1	1803430-1		
				-	-	-	-	-	-	-		
2266673-7	G	FINE CRIMP HEIGHT ADJUST	NONE	-	-	-	-	-	-	-		
				MECHANICAL FEED	2119949-1	1338685-1	5-18022-5	2119653-1	-	-		
				PNEUMATIC FEED	2119950-1	1338685-1	5-18022-5	2119641-1	2119799-1	2063440-1		
3-2266673-2	G	FINE CRIMP HEIGHT ADJUST	DOUBLE ACTING PNEUMATIC WITH SENSORS	SERVO LATCH PLATE	2119951-1	-	8-2266673-5	1901094-3	1-1752354-6	2168400-6 (QUANTITY 2)		
				SMART APPLICATOR	2161326-1	-	8-2266673-4	-	-	-		
				-	-	-	-	-	-	-		
7-2266673-7	F		CRIMP TOOLING KIT	-	-	-	-	-	-	-		

APPLICATOR DATA		
CRIMP	SIZE	TYPE
WIRE	1.07 mm [.042]	F
INSUL	1.55 mm [1.061]	O
APPLICATOR INSTRUCTIONS 408-10389		

TERMINAL DATA: TE TERMINAL		TE CRIMP SPECIFICATION	
TERMINAL NAME: CONTACT, MALE, GENERATION Y, 0.64			
WIRE STRIP LENGTH		INSULATION DIAMETER RANGE	
4.00-4.50 mm [1.57-.177 IN]		Ø1.10-1.40 mm [0.043-.055 IN]	
TERMINAL APPLICATION SPECIFICATION	114-13183		
TERMINALS APPLIED			
TE TERMINAL	TE TERMINAL	TE TERMINAL	TE TERMINAL
1924968-8	1924727-4	1924275-8	1456841-8
2098753-4	1-1924727-4	1456574-8	1456968-8
1924955-8	2035170-4	2098762-4	2138699-4
2035334-8	1-2035170-4		1-2138699-4
WIRE SIZE	CRIMP HEIGHT	CRIMP HEIGHT	CRIMP HEIGHT
0.35mm2 OR 22 AWG	mm [INCH]	mm [INCH]	REFERENCE SETTING
	0.91+/-0.03 [0.036+/-0.001]		8.8

- RECOMMENDED SPARE PARTS
- GREASE BEARING SURFACES LIGHTLY
- 3. LUBRICATE DAILY PER THE APPLICATOR INSTRUCTION SHEET SUPPLIED WITH THE APPLICATOR.
- APPLICATOR SPECIFIC DATA TO BE ENTERED INTO BLANK MEMORY CHIP AT ASSEMBLY. SEE BELOW FOR PART NUMBER:  
MECHANICAL FEED WITH "SMART APPLICATOR" CONVERSION: 8-2266673-4  
PNEUMATIC FEED WITH "SMART APPLICATOR" CONVERSION: 8-2266673-4  
SERVO FEED WITH "FINE CRIMP HEIGHT ADJUST": 8-2266673-5  
SERVO FEED WITH "NON-CRIMP HEIGHT ADJUST": 8-2266673-6
- 5. ADJUSTMENT OF THE STRIPPER MAY BE REQUIRED WHEN MOVING THE APPLICATOR BETWEEN BENCH AND LEADMAKER APPLICATIONS.
- APPLY PART NUMBER 1-23419-5 LOCTITE TO THREADS OF ITEMS 62, 180. APPLY PART NUMBER 2-23419-6 LOCTITE TO THREADS OF ITEMS 242. FOR -6 ONLY APPLY PART NUMBER 1-23419-5 LOCTITE TO THREADS OF ITEMS 37.
- GREASE THREADS, GROOVE AND O-RING ON ITEMS 35 & 252.
- MAGNET, ITEM 166 MUST BE ORIENTED CORRECTLY IN ORDER TO PROPERLY ACTUATE THE COUNTER.
- CRIMP HEIGHT REFERENCE SETTING WAS THE SETTING USED WHEN THE APPLICATOR WAS QUALIFIED AT THE FACTORY. ADJUSTMENT MAY BE NECESSARY WHEN RUNNING APPLICATOR IN THE FIELD.
- SPARE FEED CAM STORAGE LOCATION REFER TO INSTRUCTION SHEET FOR ADDITIONAL INFORMATION.
- TO CONVERT THE APPLICATOR TO A NON-CARRIER CUTTING STYLE, REMOVE ITEM 13 AND ATTACH TO THE LOCATION ON THE BACK SIDE OF THE HOUSING. REFER TO INSTRUCTION SHEET FOR ADDITIONAL INFORMATION.
- WHEN ASSEMBLING A NON CRIMP HEIGHT ADJUST APPLICATOR (-6) USE SHIMS FROM ITEM 260 TO ACHIEVE A NOMINAL SHIM HEIGHT OF 4.89.
- THIS APPLICATOR HAS BEEN DESIGNED TO APPLY WIRES WITH THIN WALL (FLR) INSULATION.

**\*WARNING**  
ON INSTALLATION, SET WIRE DISC, ITEM 40 TO LARGEST WIRE SIZE SETTING. USE OF SETTINGS BELOW MINIMUM REQUIRED CRIMP HEIGHT SETTING WILL CAUSE DAMAGE TO CRIMP TOOLING.

- DIMENSION 1.0±0.5 ON TERMINAL SUPPORT VIEW APPLIES TO ALL SOCKET TERMINALS.
- DIMENSION 4.2±0.5 ON TERMINAL SUPPORT VIEW APPLIES TO ALL PIN TERMINALS.
- THIS APPLICATOR IS EQUIPPED WITH THE DOUBLE ACTING PNEUMATIC FEED WITH SENSORS, AND IS APPLICATION SPECIFIC AND DOES NOT REQUIRE ITEMS 49 & 151.
- TERMINAL LUBRICANT IS RECOMMENDED.

-77	-32	-7	-6	-5	-2	-1	PART NO	DESCRIPTION	ITEM NO
-	-	-	-	-	-	-	1803430-1	AIR FEED MODULE	290
-	-	-	-	-	-	-	2119957-2	APPLICATOR SHIM PACK	260
-	-	-	-	-	-	-	8-21084-0	O-RING, .676 ID, .070 DIA. MAT.	252
-	-	-	-	-	-	-	2119640-1	PUSH ROD, AIR FEED	250

**ATLANTIC VERSION**  
Shown on sheets 1 of 4 & 2 of 4  
(Pacific version shown on sheets 3 of 4 & 4 of 4)

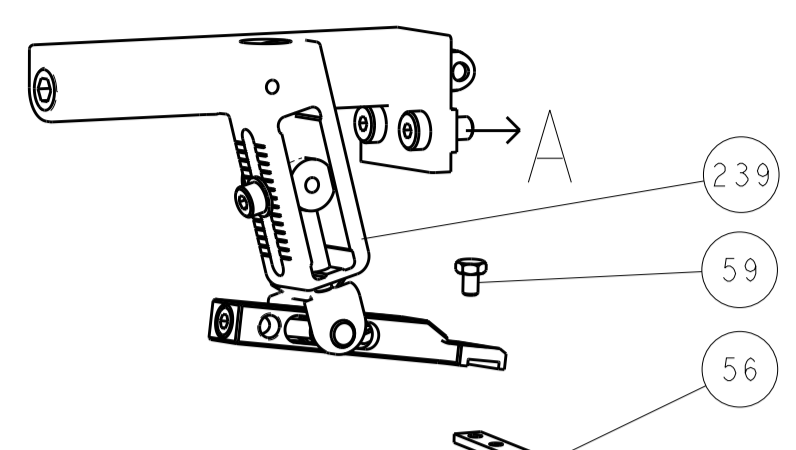
SET UP GAUGE	LOC	DIST	REVISIONS			
2119599-1	A	66	REV	DATE	BY	CHK
			F	ECR-16-012044	22AUG2016	MR
			G	ECR-16-012485	07SEP2016	MZ
			G1	ECR-16-015428	8NOV2016	RS

-	-	-	-	-	-	-	1803259-1	BUSHING, FLANGED	249
-	-	-	-	-	-	-	2119641-1	FEED CAM, AIR FEED	248
-	-	-	-	-	-	-	2119798-1	DETENT PIN	247
-	-	-	-	-	-	-	1-22279-3	SPRING, COMPRESSION	246
-	-	-	-	-	-	-	2119758-1	RAM, AMP STYLE, SIDE FEED, NON-ADJ.	245
-	-	-	-	-	-	-	2119082-5	CAM, SNAIL, INSULATION ADJUSTMENT	244
-	-	-	-	-	-	-	2079764-1	WASHER, WAVE SPRING, CREST-TO-CREST	243
-	-	-	-	-	-	-	2119083-1	RETAINER, INSULATION DIAL	242
-	-	-	-	-	-	-	7-18023-7	SCR, SKT HD CAP M3 X 4.0	241
-	-	-	-	-	-	-	2168400-6	SHCS, LOW HEAD, RoHS, M5 X 16	240
-	-	-	-	-	-	-	2119580-1	MECHANICAL FEED ASSEMBLY	239
-	-	-	-	-	-	-	2063440-1	AIR FEED MODULE	238
-	-	-	-	-	-	-	2119740-2	TAG, IDENTIFICATION	213
-	-	-	-	-	-	-	1901094-3	SPACER, FEEDER	198
-	-	-	-	-	-	-	21045-3	RING, RETAIN, EXTERN, 3/16 CRESCENT	172
-	-	-	-	-	-	-	994969-1	MAGNET, RARE EARTH HIGH ENERGY	166
-	-	-	-	-	-	-	994970-2	COUNTER, MAGNETIC	164
-	-	-	-	-	-	-	240638-1	SPRING, FEED FINGER	163
-	-	-	-	-	-	-	3-23627-7	PIN, RETAIN, GRVD, 3/16 X .854	137
-	-	-	-	-	-	-	2119799-1	HOLDER, FEED FINGER, AF	136
-	-	-	-	-	-	-	SEE NOTE 4	MEMORY CHIP, PROGRAMMED	135
-	-	-	-	-	-	-	1633743-1	SERVO FEED LATCH ASM	133
-	-	-	-	-	-	-	1-18028-2	WASHER, FLAT, REG M4	119
-	-	-	-	-	-	-	2119944-1	FEED FINGER ASSEMBLY, SF	117
-	-	-	-	-	-	-	2119955-1	ASSY, LUBRICATOR, SIDE FEED	113
-	-	-	-	-	-	-	455888-4	SPACER, CRIMPER	82
-	-	-	-	-	-	-	2119956-1	DOCUMENTATION PACKAGE	71
-	-	-	-	-	-	-	2119791-9	DEPRESSOR, WIRE	70
-	-	-	-	-	-	-	2119740-1	TAG, IDENTIFICATION	67
-	-	-	-	-	-	-	2168078-1	SCREW, DRIVE, RH, RoHS, 2 x .188	66
-	-	-	-	-	-	-	2119793-1	LIMITER, ADJUSTMENT BOLT	63
-	-	-	-	-	-	-	992763-5	SCR, SET, SOC, CONE POINT, M3 x 4.0	62
-	-	-	-	-	-	-	2079383-4	SCR, BHSC, RoHS (M4 X 8)	60
-	-	-	-	-	-	-	5-18022-5	SCR, HEX HD CAP, M4 X 6.0	59
-	-	-	-	-	-	-	1338685-1	PAWL, FEED	56
-	-	-	-	-	-	-	2168400-1	SHCS, LOW HEAD, RoHS, M4 X 12	54
-	-	-	-	-	-	-	1-2168083-0	SCR, SKT HD CAP, RoHS, M4 X 10	53
-	-	-	-	-	-	-	5018030-1	NUT, HEX, REG, RoHS, M3	52
-	-	-	-	-	-	-	811242-5	BUMPER, HOLD DOWN	51
-	-	-	-	-	-	-	690753-2	SPACER, TONKER	50
-	-	-	-	-	-	-	18023-9	SCR, SKT HD CAP M4 X 6.0	49
-	-	-	-	-	-	-	2119652-1	FEED CAM, PRE FEED	48
-	-	-	-	-	-	-	2119653-1	FEED CAM, POST FEED	47
-	-	-	-	-	-	-	2119656-9	APPLICATOR BASIC ASSEMBLY, SF	46
-	-	-	-	-	-	-	2119370-1	RAM, AMP STYLE, SIDE FEED	44
-	-	-	-	-	-	-	2079383-7	SCR, BHSC, RoHS (M8 X 25)	41
-	-	-	-	-	-	-	2119645-1	DISC, NUMBERED FA WIRE ADJUSTMENT	40
-	-	-	-	-	-	-	2119957-1	APPLICATOR SHIM PACK	39
-	-	-	-	-	-	-	2119644-1	RAM WASHER, PRECISION	38
-	-	-	-	-	-	-	2119085-1	FA HEAD, ATLANTIC STYLE	37
-	-	-	-	-	-	-	2119092-1	BOLT, ADJUSTMENT	35
-	-	-	-	-	-	-	6-1752356-2	SUPPORT, TERMINAL	34
-	-	-	-	-	-	-	2079383-5	SCR, BHSC, RoHS (M4 X 20)	33
-	-	-	-	-	-	-	2161328-1	HEX HEAD, FLANGED, M5 x 8mm LONG	32
-	-	-	-	-	-	-	1320908-6	SPACER, STRIP GUIDE	30
-	-	-	-	-	-	-	2119959-7	ASSEMBLY, STRIP GUIDE	29
-	-	-	-	-	-	-	1320928-2	STRIP GUIDE	24
-	-	-	-	-	-	-	2168083-2	SCR, SKT HD CAP, RoHS, M4 X 8.0	21
-	-	-	-	-	-	-	1-18028-2	WASHER, FLAT, REG M4	20
-	-	-	-	-	-	-	2119533-1	STRIPPER, SIDE FEED	19
-	-	-	-	-	-	-	2119806-1	INSERT, SHEAR	13
-	-	-	-	-	-	-	3-22280-3	SPRING, COMPRESSION	12
-	-	-	-	-	-	-	1-356885-4	STOP, SHEAR	11
-	-	-	-	-	-	-	2119805-1	SHEAR HOLDER, FRONT	10
-	-	-	-	-	-	-	1803095-6	FLOATING SHEAR, FRONT	9
-	-	-	-	-	-	-	1-1803058-6	ANVIL, COMBINATION	8
-	-	-	-	-	-	-	-	-	7
-	-	-	-	-	-	-	-	-	6
-	-	-	-	-	-	-	2119757-3	DEPRESSOR, SHEAR	5
-	-	-	-	-	-	-	3-238011-1	BLOCK, CRIMPER SPACER	4
-	-	-	-	-	-	-	1-1803019-1	CRIMPER, INSULATION O	3
-	-	-	-	-	-	-	455888-3	SPACER, CRIMPER	2
-	-	-	-	-	-	-	8-1633860-6	CRIMPER, WIRE	1

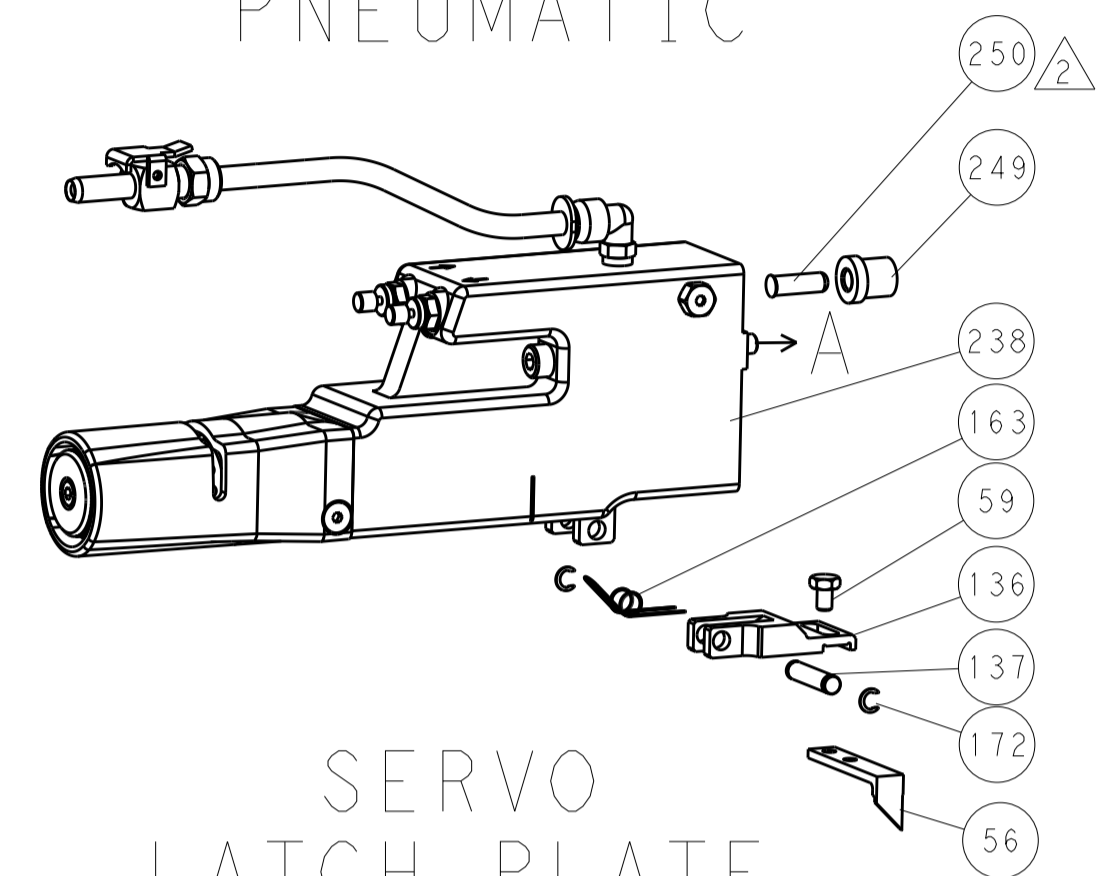
DIMENSIONS:		TOLERANCES UNLESS OTHERWISE SPECIFIED:		DATE		NAME	
mm	0 PLC ±	1 PLC ±	2 PLC ±	06FEB2015	CHK	06FEB2015	TE Connectivity
	3 PLC ±	4 PLC ±	ANGLES ±	06FEB2015	APVD	06FEB2015	Harrisburg, PA 17105-3608
MATERIAL:	FINISH:	WEIGHT:	SCALE:	Customer Accessible Production Drawing		Ocean Side Feed Applicator	
			1:2	A1 00779 ©=2266673		RESTRICTED TO	

LOC		DIST		REVISIONS			
A	66	P	LTN	DESCRIPTION	DATE	DMN	APVD
		-		SEE SHEET 1			

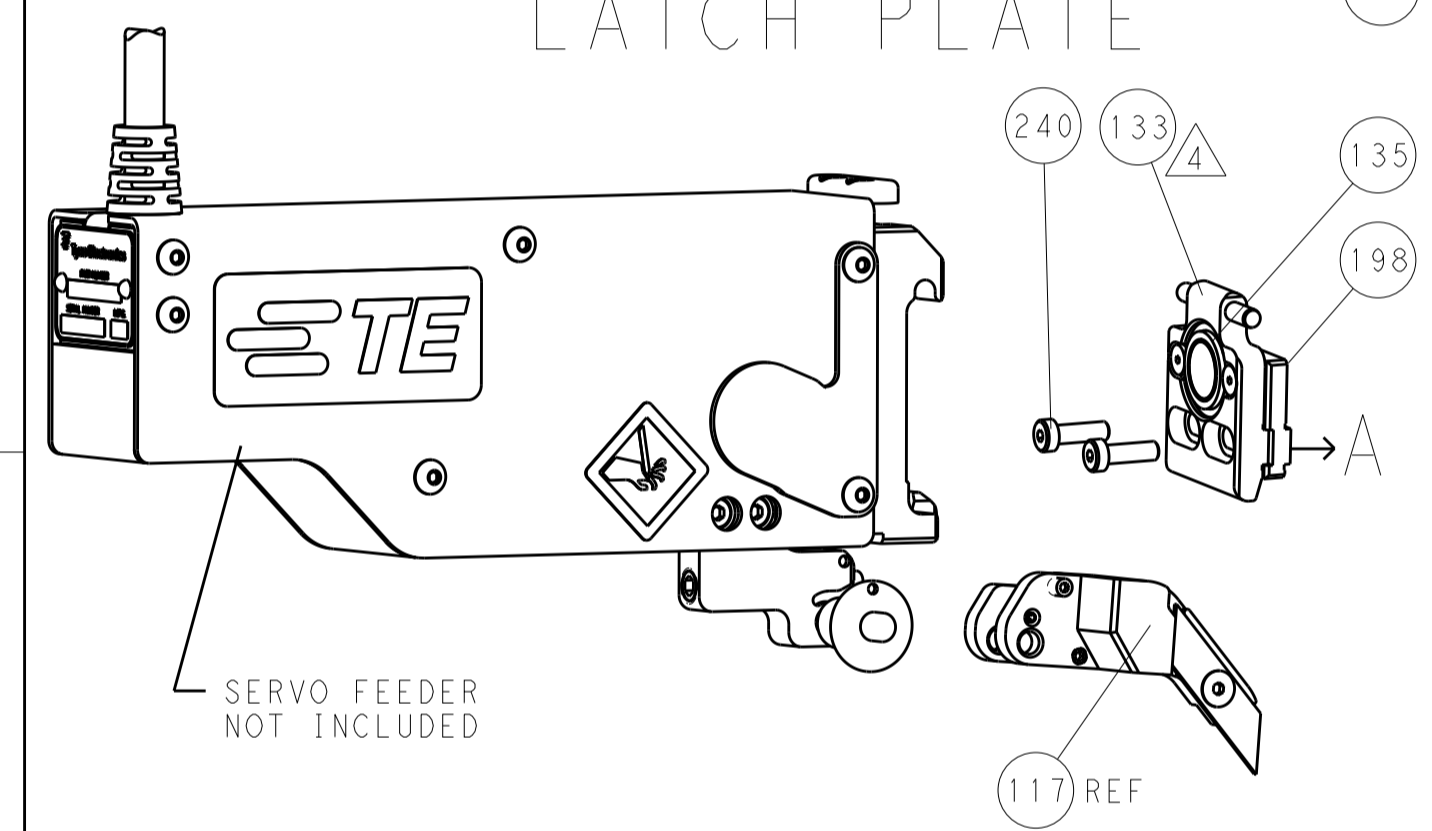
### FEED TYPE MECHANICAL



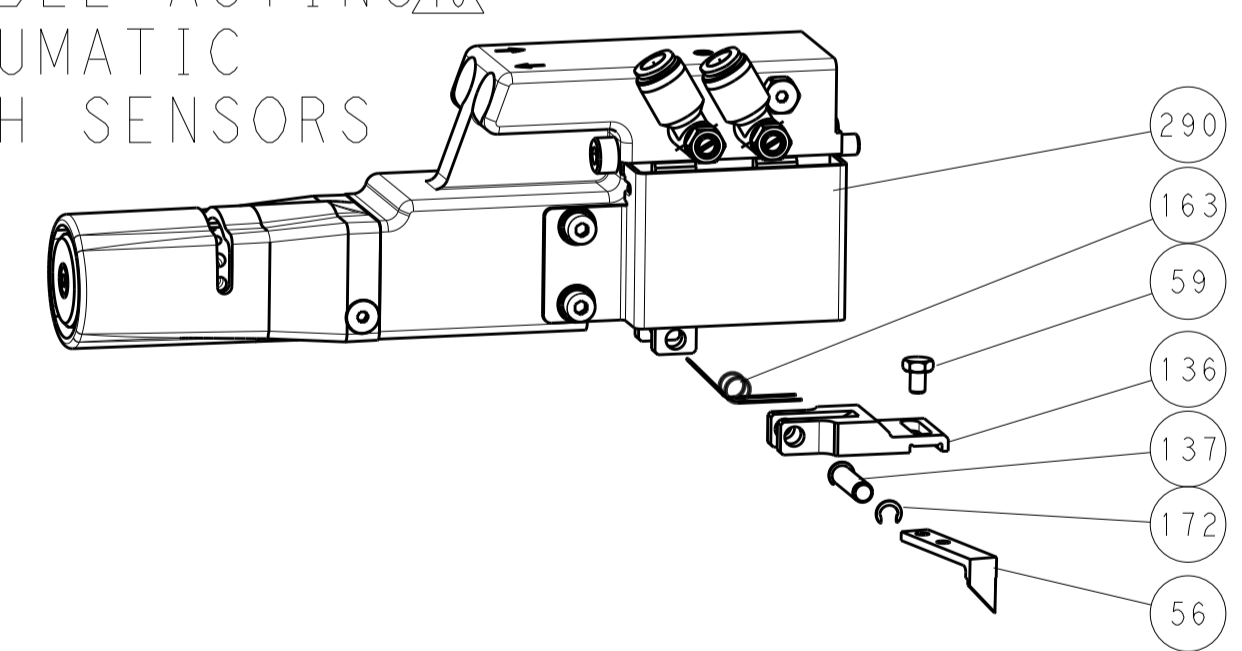
### PNEUMATIC



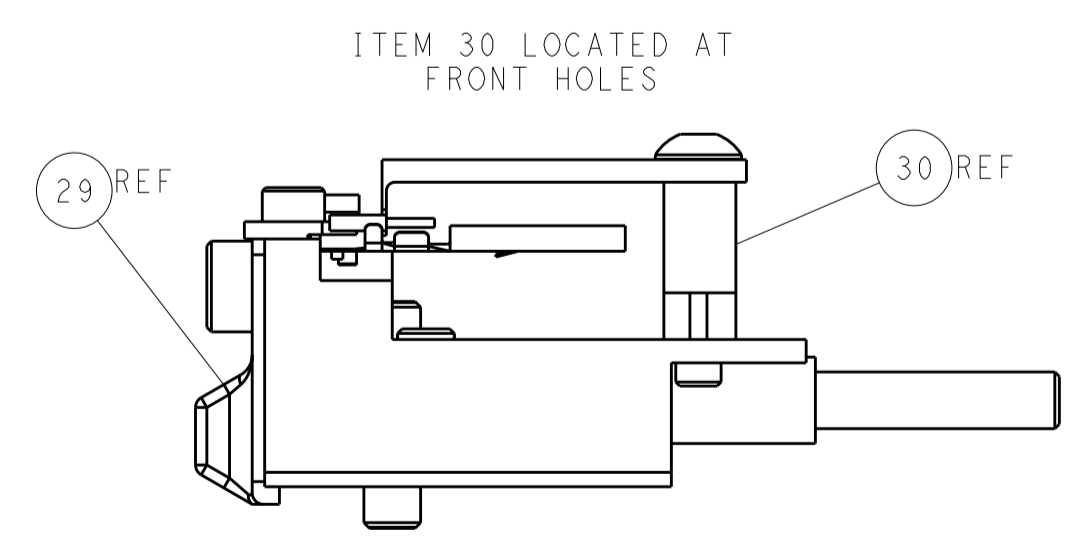
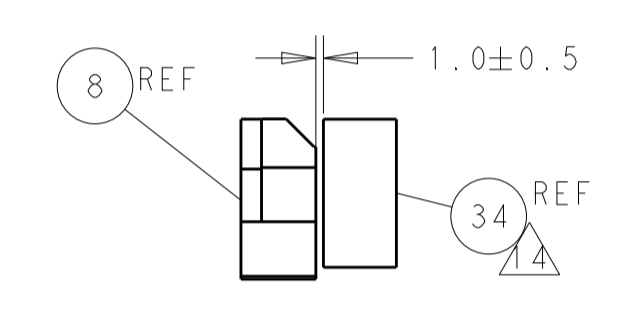
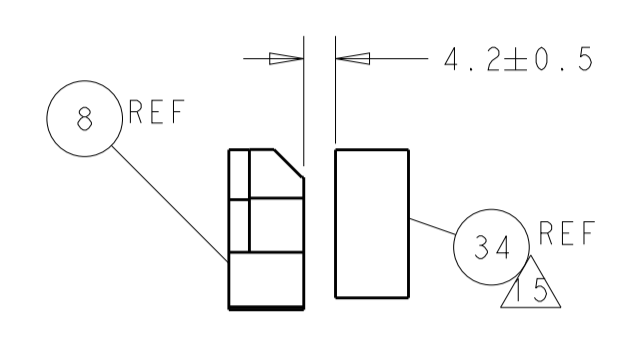
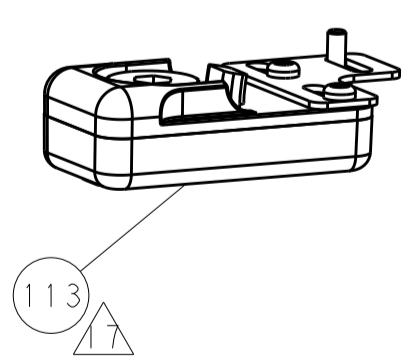
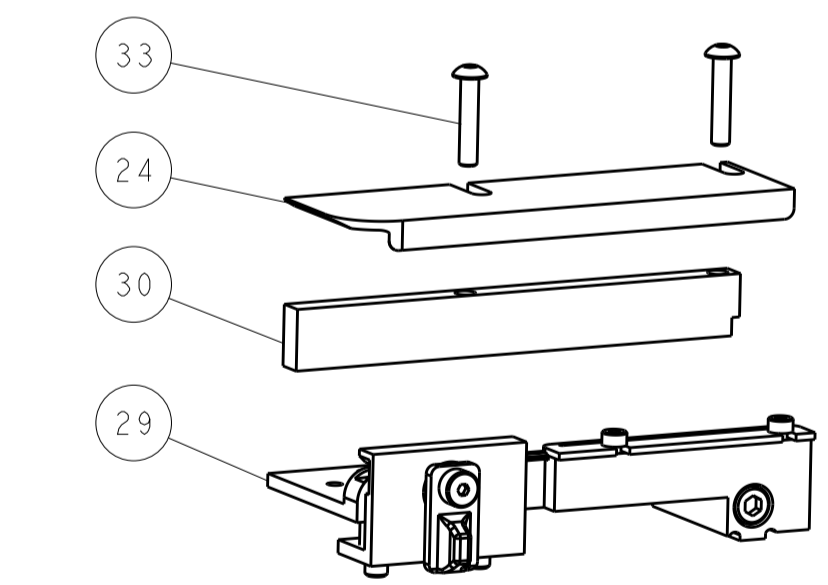
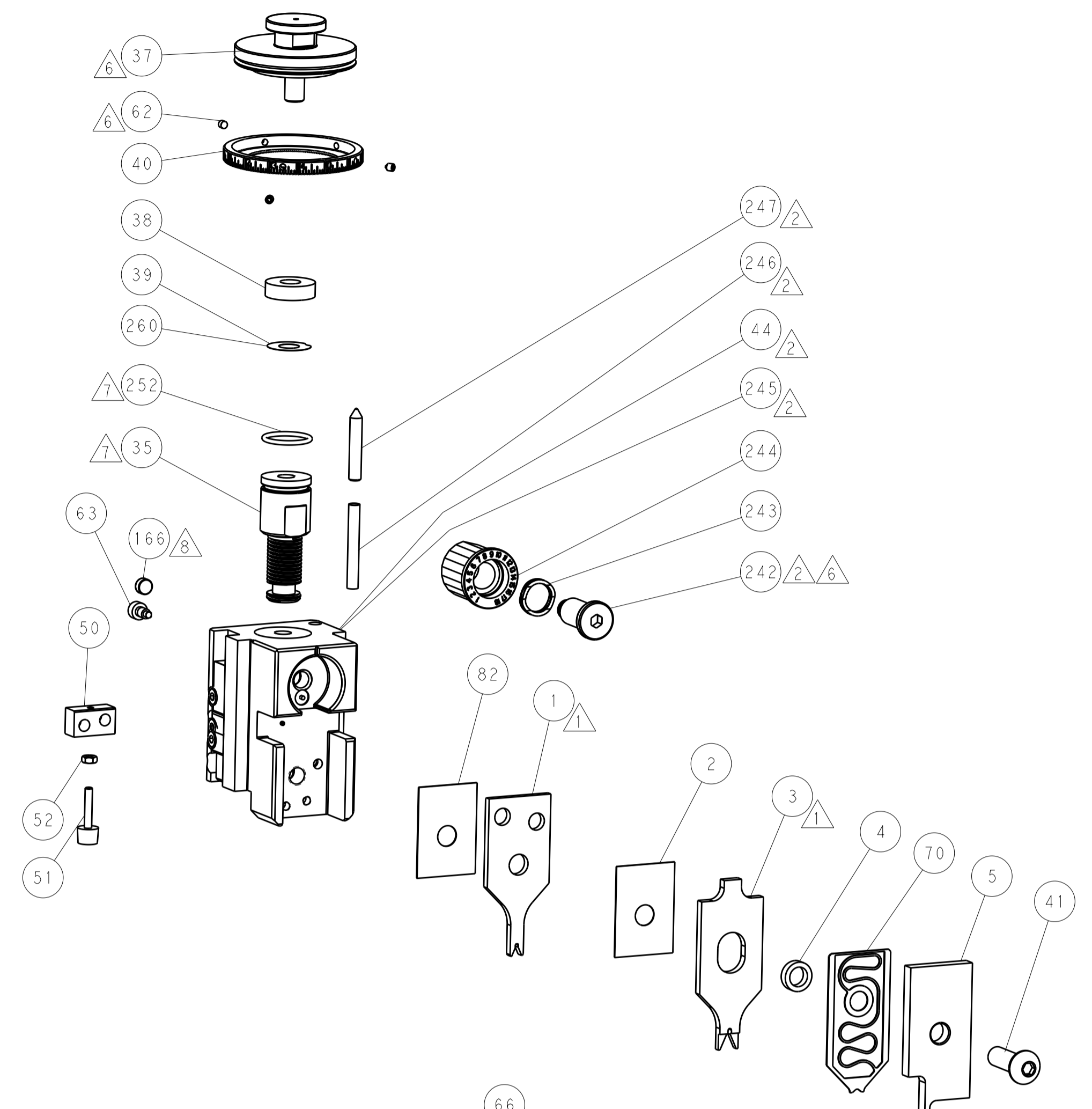
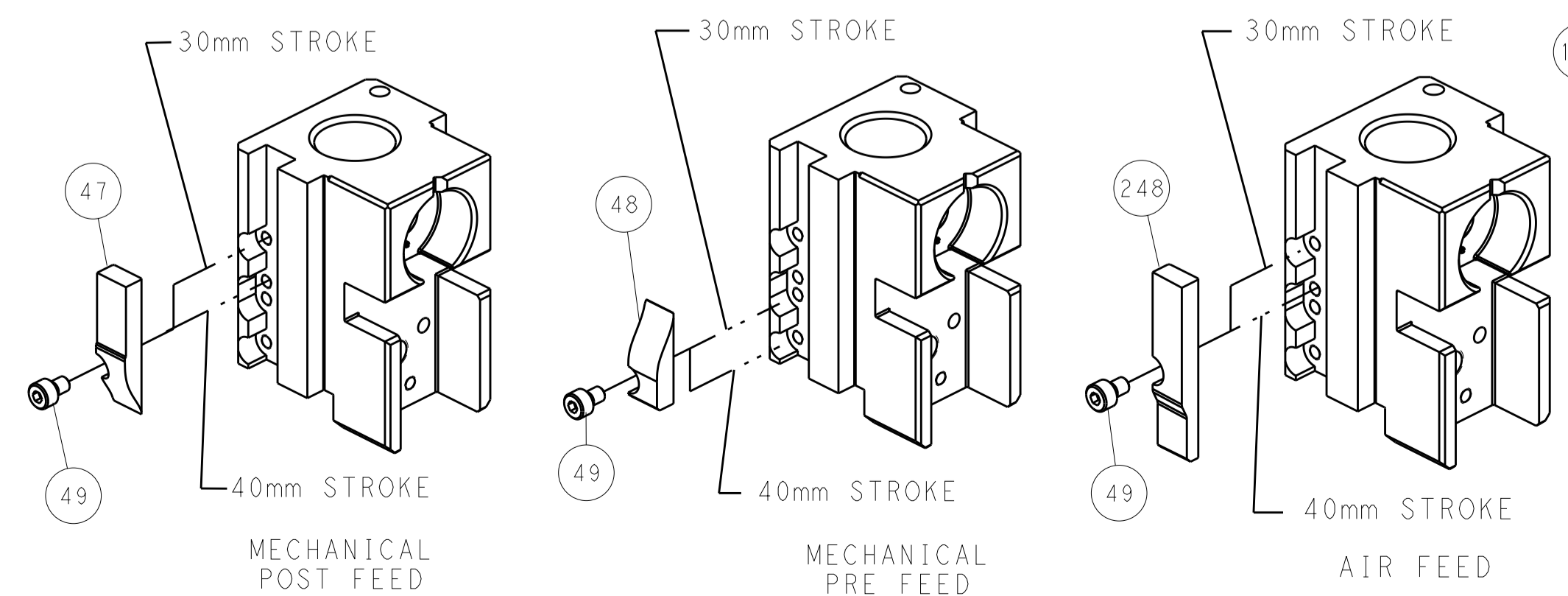
### SERVO LATCH PLATE



### DOUBLE ACTING PNEUMATIC WITH SENSORS



### CAM POSITIONS



**ATLANTIC VERSION**  
 Shown on sheets 1 of 4 & 2 of 4  
 (Pacific version shown on sheets 3 of 4 & 4 of 4)

DIMENSIONS:		TOLERANCES UNLESS OTHERWISE SPECIFIED:		DMN	06FEB2015	TE Connectivity Harrisburg, PA 17105-3608	
mm	0 PLC ±	1 PLC ±	2 PLC ±	CHK	06FEB2015		
	3 PLC ±	4 PLC ±	ANGLES ±	APVD	06FEB2015	NAME	
MATERIAL	FINISH	WEIGHT	Customer Accessible Production Drawing	SCALE	1:2	SHEET	2 of 4
				REV	G1	RESTRICTED TO	

PACIFIC VERSION TERMINATOR INTERFACE ADAPTER	PART NUMBER	REVISION	DESCRIPTION	FEED TYPE	APPLICATOR STYLE CONVERSION CHART						
					CONVERT TO	PART NUMBERS REQUIRED					
						2119950-1	1338685-1	5-18022-5	2119641-2	2119799-1	2063440-1
	2-2266673-1	G	FINE CRIMP HEIGHT ADJUST	MECHANICAL	PNEUMATIC FEED	2119950-1	1338685-1	5-18022-5	2119641-2	2119799-1	2063440-1
					SERVO LATCH PLATE	2119951-1	-	8-2266673-5	1901094-3	1-1752354-6	2168400-6 (QUANTITY 2)
					SMART APPLICATOR	2161326-1	-	8-2266673-4	-	-	-
	2-2266673-2	G	FINE CRIMP HEIGHT ADJUST	PNEUMATIC	DOUBLE ACTING	2119950-2	1338685-1	5-18022-5	-	2119799-1	1803430-1
					MECHANICAL FEED	2119949-1	1338685-1	5-18022-5	2119653-2	-	-
					SERVO LATCH PLATE	2119951-1	-	8-2266673-5	1901094-3	1-1752354-6	2168400-6 (QUANTITY 2)
2-2266673-5	G	FINE CRIMP HEIGHT ADJUST	SERVO LATCH PLATE	SMART APPLICATOR	2161326-1	-	8-2266673-4	-	-	-	
				DOUBLE ACTING	2119950-2	1338685-1	5-18022-5	-	2119799-1	1803430-1	
				MECHANICAL FEED	2119949-1	1338685-1	5-18022-5	2119653-2	-	-	
2-2266673-7	G	FINE CRIMP HEIGHT ADJUST	NONE	PNEUMATIC FEED	2119950-1	1338685-1	5-18022-5	2119641-2	2119799-1	2063440-1	
				DOUBLE ACTING	2119950-2	1338685-1	5-18022-5	-	2119799-1	1803430-1	
				MECHANICAL FEED	2119949-1	1338685-1	5-18022-5	2119653-2	-	2168400-6 (QUANTITY 2)	
4-2266673-2	G	FINE CRIMP HEIGHT ADJUST	DOUBLE ACTING PNEUMATIC WITH SENSORS	PNEUMATIC FEED	2119950-1	1338685-1	5-18022-5	2119641-2	2119799-1	2063440-1	
				SERVO LATCH PLATE	2119951-1	-	8-2266673-5	1901094-3	1-1752354-6	2168400-6 (QUANTITY 2)	
				SMART APPLICATOR	2161326-1	-	8-2266673-4	-	-	2168400-6 (QUANTITY 2)	
7-2266673-7	F		CRIMP TOOLING KIT	-	-	-	-	-	-	-	

APPLICATOR DATA		
CRIMP SIZE	TYPE	
WIRE 1.07 mm [0.42]	F	
INSUL 1.55 mm [0.61]	O	
APPLICATOR INSTRUCTIONS 408-10389		

TERMINAL DATA: TE TERMINAL		TE CRIMP SPECIFICATION	
TERMINAL NAME: CONTACT, MALE, GENERATION Y, 0.64			
WIRE STRIP LENGTH	INSULATION DIAMETER RANGE		
4.00-4.50 mm [0.157-0.177 IN]	Ø1.10-1.40 mm [0.043-0.055 IN]		
TERMINAL APPLICATION SPECIFICATION	114-13183		
TERMINALS APPLIED			
TE TERMINAL	TE TERMINAL	TE TERMINAL	TE TERMINAL
1924968-8	1924727-4	1924275-8	1456841-8
2098753-4	1-1924727-4	1456574-8	1456968-8
1924955-8	2035170-4	2098762-4	2138699-4
2035334-8	1-2035170-4		1-2138699-4

WIRE SIZE	CRIMP HEIGHT mm [INCH]	CRIMP HEIGHT REFERENCE SETTING
0.35mm2 OR 22 AWG	0.91+/-0.03 [0.036+/-0.001]	8.8

- RECOMMENDED SPARE PARTS
- GREASE BEARING SURFACES LIGHTLY
- LUBRICATE DAILY PER THE APPLICATOR INSTRUCTION SHEET SUPPLIED WITH THE APPLICATOR.
- APPLICATOR SPECIFIC DATA TO BE ENTERED INTO BLANK MEMORY CHIP AT ASSEMBLY. SEE BELOW FOR PART NUMBER: MECHANICAL FEED WITH "SMART APPLICATOR" CONVERSION: 8-2266673-4 PNEUMATIC FEED WITH "SMART APPLICATOR" CONVERSION: 8-2266673-4 SERVO FEED WITH "FINE CRIMP HEIGHT ADJUST": 8-2266673-5
- ADJUSTMENT OF THE STRIPPER MAY BE REQUIRED WHEN MOVING THE APPLICATOR BETWEEN BENCH AND LEADMAKER APPLICATIONS.
- APPLY PART NUMBER 1-23419-5 LOCTITE TO THREADS OF ITEMS 62, 180. APPLY PART NUMBER 2-23419-6 LOCTITE TO THREADS OF ITEMS 242.
- GREASE THREADS, GROOVE AND O-RING ON ITEMS 139 & 152.
- MAGNET MUST BE ORIENTED CORRECTLY IN ORDER TO PROPERLY ACTUATE THE COUNTER.
- CRIMP HEIGHT REFERENCE SETTING WAS THE SETTING USED WHEN THE APPLICATOR WAS QUALIFIED AT THE FACTORY. ADJUSTMENT MAY BE NECESSARY WHEN RUNNING APPLICATOR IN THE FIELD.
- SPARE FEED CAM STORAGE LOCATION REFER TO INSTRUCTION SHEET FOR ADDITIONAL INFORMATION.
- TO CONVERT THE APPLICATOR TO A NON-CARRIER CUTTING STYLE, REMOVE ITEM 13 AND ATTACH TO THE LOCATION ON BACK SIDE OF THE HOUSING. REFER TO INSTRUCTION SHEET FOR ADDITIONAL INFORMATION.
- THIS APPLICATOR HAS BEEN DESIGNED TO APPLY WIRES WITH THIN WALL (FLR) INSULATION.

- DIMENSION 1.0±0.5 ON TERMINAL SUPPORT VIEW APPLIES TO ALL SOCKET TERMINALS.
- DIMENSION 4.2±0.5 ON TERMINAL SUPPORT VIEW APPLIES TO ALL PIN TERMINALS.
- THIS APPLICATOR IS EQUIPPED WITH THE DOUBLE ACTING PNEUMATIC FEED WITH SENSORS, AND IS APPLICATION SPECIFIC AND DOES NOT REQUIRE ITEMS 49 & 151.
- TERMINAL LUBRICANT IS RECOMMENDED.

**\*WARNING**  
ON INSTALLATION, SET WIRE DISC, ITEM 40 TO LARGEST WIRE SIZE SETTING. USE OF SETTINGS BELOW MINIMUM REQUIRED CRIMP HEIGHT SETTING WILL CAUSE DAMAGE TO CRIMP TOOLING.

-	1	-	-	-	-	1803430-1	AIR FEED MODULE	290
-	1	1	1	1	1	2119782-1	FINE ADJUST HEAD ASM, PACIFIC STYLE	251
-77	-42	-27	-25	-22	-21	PART NO	DESCRIPTION	ITEM NO

**PACIFIC VERSION**  
Shown on sheets 3 of 4 & 4 of 4  
(Atlantic version shown on sheets 1 of 4 & 2 of 4)

SET UP GAUGE	LOC	DIST	REVISIONS					
2119599-1	A	66	P	LTN	DESCRIPTION	DATE	OWN	APVD
			-	-	SEE SHEET 1	-	-	-

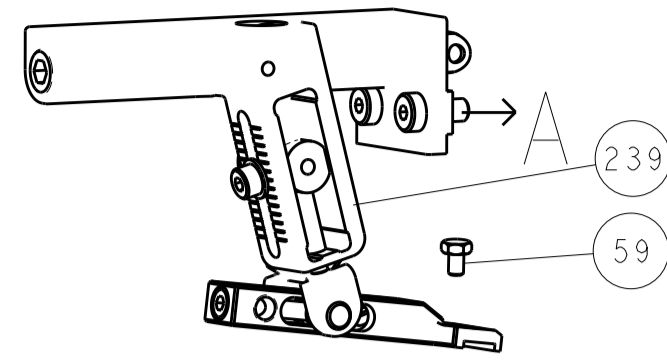
-	-	-	-	1	-	2119640-1	PUSH ROD, AIR FEED	250
-	-	-	-	1	-	1803259-1	BUSHING, FLANGED	249
-	1	1	1	1	1	1-22279-3	SPRING, COMPRESSION	246
-	1	1	1	1	1	2119082-5	CAM, SNAIL, INSULATION ADJUSTMENT	244
-	1	1	1	1	1	2079764-1	WASHER, WAVE SPRING, CREST-TO-CREST	243
-	1	1	1	1	1	2119083-1	RETAINER, INSULATION DIAL	242
-	1	1	1	1	1	7-18023-7	SCR, SKT HD CAP M3 X 4.0	241
-	-	-	-	2	-	2168400-6	SHCS, LOW HEAD, RoHS, M5 X 16	240
-	-	-	-	-	1	2119580-1	MECHANICAL FEED ASSEMBLY	239
-	-	-	-	-	-	2063440-1	AIR FEED MODULE	238
-	-	-	-	1	-	2119740-2	TAG IDENTIFICATION	213
-	-	-	-	1	-	1901094-3	SPACER, FEEDER	198
-	-	-	-	-	2	21045-3	RING, RETAIN, EXTERN, 3/16 CRESCENT	172
-	1	1	1	1	1	994969-1	MAGNET, RARE EARTH HIGH ENERGY	166
-	REF	REF	REF	REF	REF	994970-2	COUNTER, MAGNETIC	164
-	1	-	-	1	-	240638-1	SPRING, FEED FINGER	163
-	1	1	1	1	1	8-21084-1	O-RING, .801 ID, .070 DIA. MAT.	152
-	-	-	-	-	1	2119641-2	FEED CAM, AIR FEED	151
-	1	1	1	1	1	2119798-2	DETENT PIN	145
-	1	1	1	1	1	2079383-8	SCR, BHSC, RoHS (M4 X 16)	144
-	4	4	4	4	4	2168400-5	SHCS, LOW HEAD, RoHS, M4 X 20	143
-	-	-	-	-	1	2119653-2	FEED CAM, POST FEED	142
-	1	1	1	1	1	1-2119656-0	APPLICATOR BASIC ASSEMBLY, SF	141
-	1	1	1	1	1	2119650-1	RAM, ASIAN STYLE, SIDE FEED	140
-	1	1	1	1	1	2119092-2	BOLT, ADJUSTMENT	139
-	1	-	-	1	-	3-23627-7	PIN, RETAIN, GRVD, 3/16 X .854	137
-	-	-	-	-	1	2119799-1	HOLDER, FEED FINGER, AF	136
-	-	-	REF	-	-	SEE NOTE 4	MEMORY CHIP, PROGRAMMED	135
-	-	-	1	-	-	1633743-1	SERVO FEED LATCH ASM	133
-	1	1	1	1	1	1-18028-2	WASHER, FLAT, REG M4	119
-	-	-	REF	-	-	2119944-1	FEED FINGER ASSEMBLY, SF	117
-	1	1	1	1	1	2119955-1	ASSY, LUBRICATOR, SIDE FEED	113
-	1	1	1	1	1	455888-4	SPACER, CRIMPER	82
-	1	1	1	1	1	2119956-1	DOCUMENTATION PACKAGE	71
-	1	1	1	1	1	2119791-9	DEPRESSOR, WIRE	70
-	1	1	-	1	1	2119740-1	TAG IDENTIFICATION	67
-	2	2	2	2	2	2168078-1	SCREW, DRIVE, RH, RoHS, 2 x .188	66
-	1	1	1	1	1	2119793-1	LIMITER, ADJUSTMENT BOLT	63
-	3	3	3	3	3	992763-5	SCR, SET, SOC, CONE POINT, M3 x 4.0	62
-	1	-	-	1	1	5-18022-5	SCR, HEX HD CAP, M4 X 6.0	59
-	1	-	-	-	1	1338685-1	PAWL, FEED	56
-	2	2	2	2	2	1-2168083-0	SCR, SKT HD CAP, RoHS, M4 X 10	53
-	1	1	1	1	1	5018030-1	NUT, HEX, REG, RoHS, M3	52
-	1	1	1	1	1	811242-5	BUMPER, HOLD DOWN	51
-	1	1	1	1	1	690753-2	SPACER, TONKER	50
-	-	-	-	-	1	18023-9	SCR, SKT HD CAP M4 X 6.0	49
-	-	-	-	-	1	2119652-1	FEED CAM, PRE FEED	48
-	1	1	1	1	1	2079383-7	SCR, BHSC, RoHS (M8 X 25)	41
-	1	1	1	1	1	2119645-1	DISC, NUMBERED FA WIRE ADJUSTMENT	40
-	1	1	1	1	1	2119957-1	APPLICATOR SHIM PACK	39
-	1	1	1	1	1	2119644-1	RAM WASHER, PRECISION	38
-	1	1	1	1	1	6-1752356-2	SUPPORT, TERMINAL	34
-	2	2	2	2	2	2079383-5	SCR, BHSC, RoHS (M4 X 20)	33
-	1	1	1	1	1	2161328-1	HEX HEAD, FLANGED, M5 x 8mm LONG	32
-	1	1	1	1	1	1320908-6	SPACER, STRIP GUIDE	30
-	1	1	1	1	1	2119959-7	ASSEMBLY, STRIP GUIDE	29
-	1	1	1	1	1	1320928-2	STRIP GUIDE	24
-	1	1	1	1	1	2168083-2	SCR, SKT HD CAP, RoHS, M4 X 8.0	21
-	1	1	1	1	1	1-18028-2	WASHER, FLAT, REG M4	20
-	1	1	1	1	1	2119533-1	STRIPPER, SIDE FEED	19
-	1	1	1	1	1	2119806-1	INSERT, SHEAR	13
-	1	1	1	1	1	3-22280-3	SPRING, COMPRESSION	12
-	1	1	1	1	1	1-356885-4	STOP, SHEAR	11
-	1	1	1	1	1	2119805-1	SHEAR HOLDER, FRONT	10
-	1	1	1	1	1	1803095-6	FLOATING SHEAR, FRONT	9
-	1	1	1	1	1	1-1803058-6	ANVIL, COMBINATION	8
-	-	-	-	-	-	-	-	7
-	-	-	-	-	-	-	-	6
-	1	1	1	1	1	2119757-3	DEPRESSOR, SHEAR	5
-	1	1	1	1	1	3-238011-1	BLOCK, CRIMPER SPACER	4
-	1	1	1	1	1	1-1803019-1	CRIMPER, INSULATION O	3
-	1	1	1	1	1	455888-3	SPACER, CRIMPER	2
-	1	1	1	1	1	8-1633860-6	CRIMPER, WIRE	1

DIMENSIONS:		TOLERANCES UNLESS OTHERWISE SPECIFIED:		DATE	
mm	0 PLC ±	1 PLC ±	2 PLC ±	06 FEB 2015	CHK
	3 PLC ±	4 PLC ±	ANGLES ±	06 FEB 2015	CHK
				06 FEB 2015	CHK
MATERIAL:				FINISH:	
WEIGHT:				SCALE:	
Customer Accessible Production Drawing				SHEET 3 OF 4	

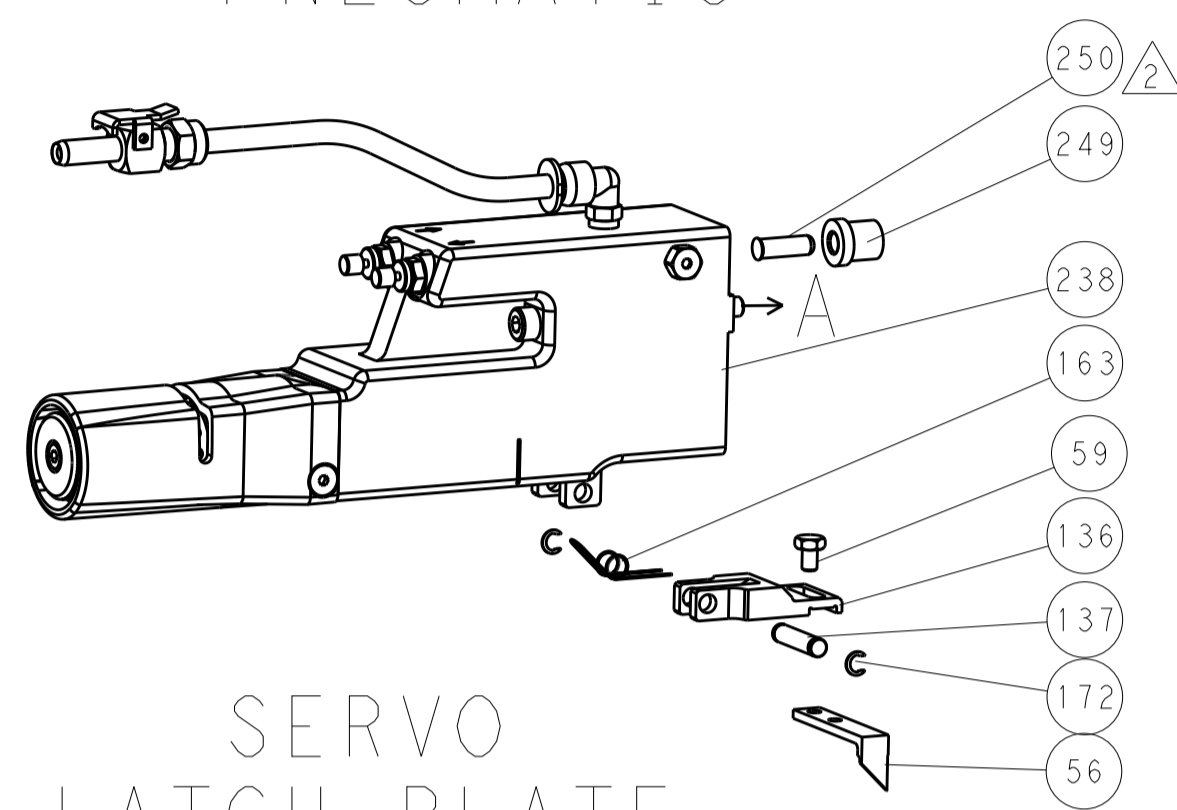


LOC		DIST		REVISIONS			
A	66	P	LTM	DESCRIPTION	DATE	OWN	APVD
		-		SEE SHEET 1			

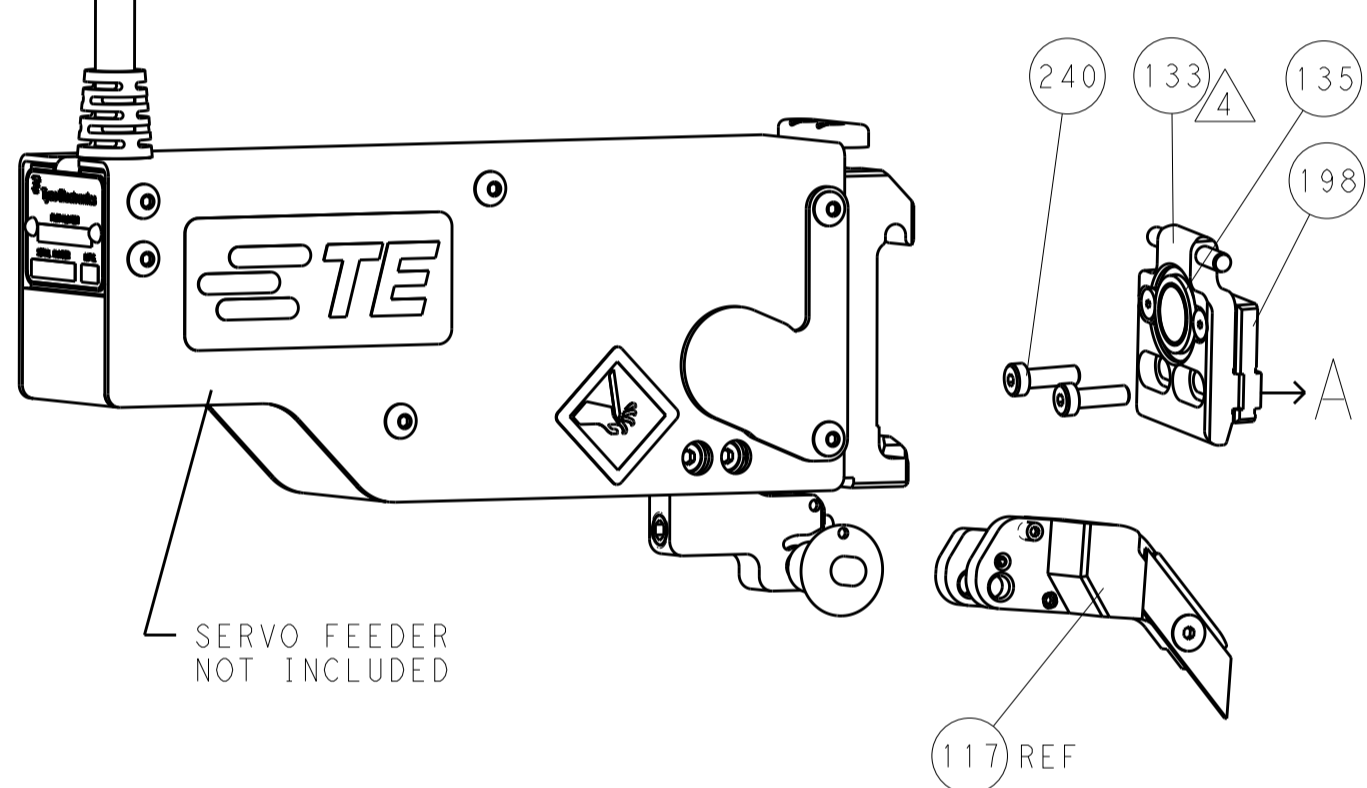
### FEED TYPE MECHANICAL



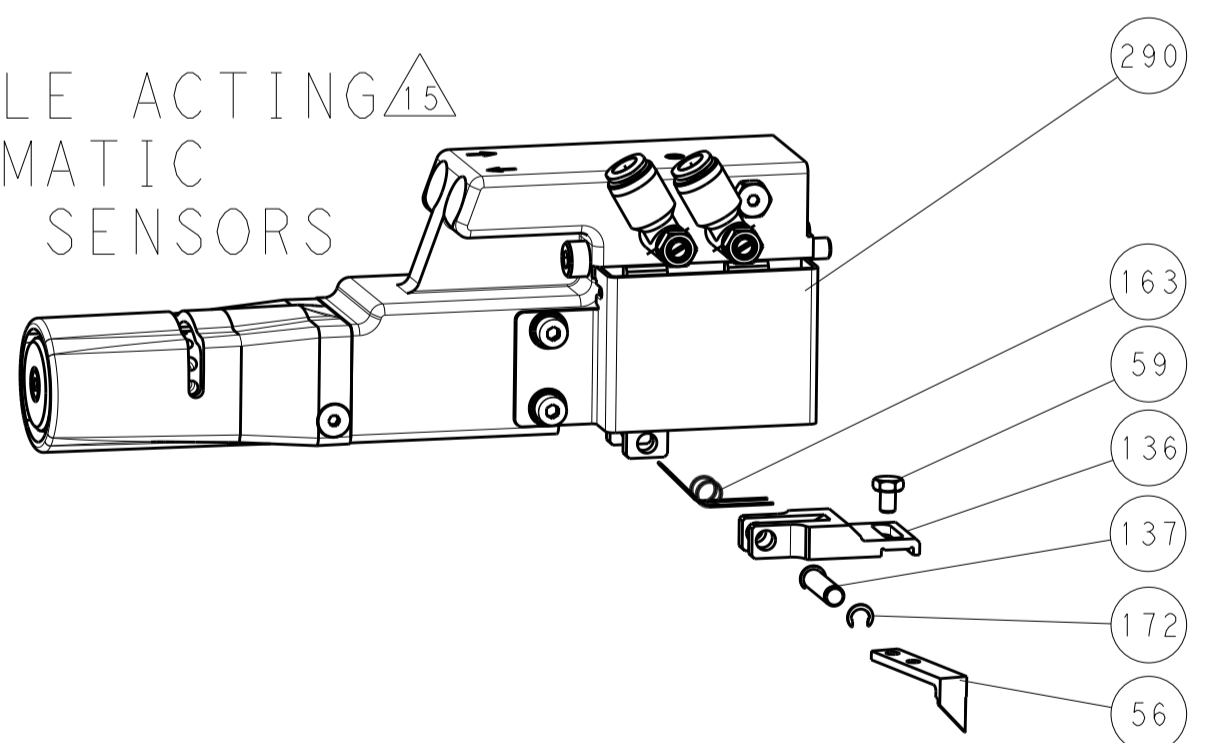
### PNEUMATIC



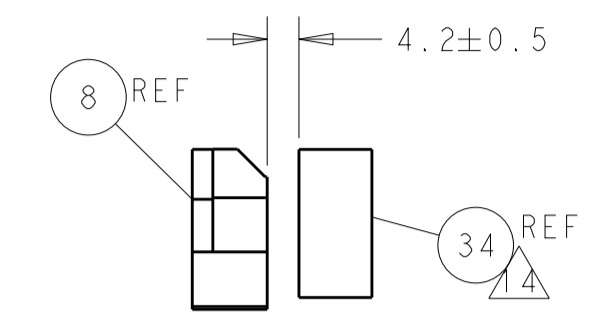
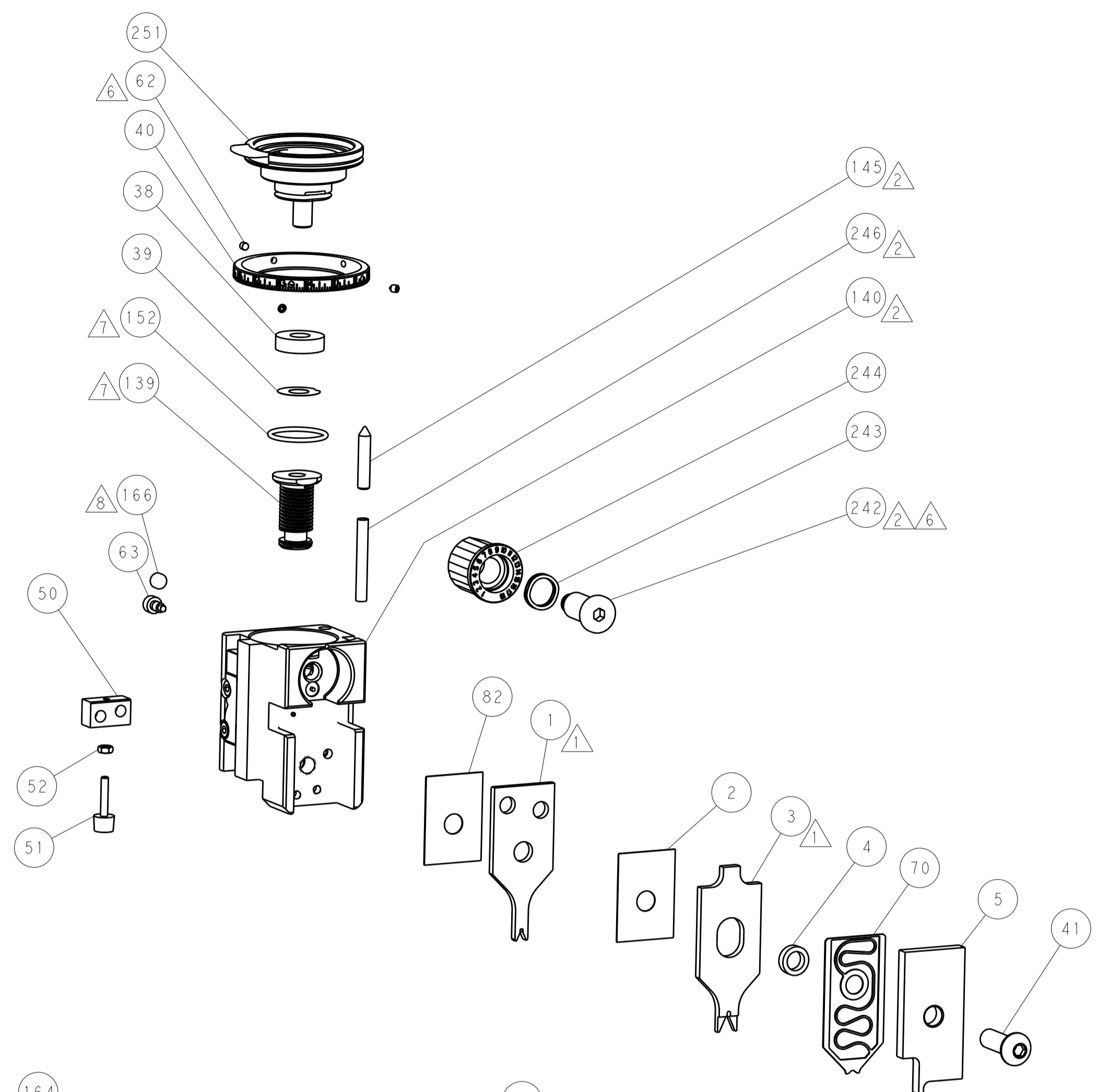
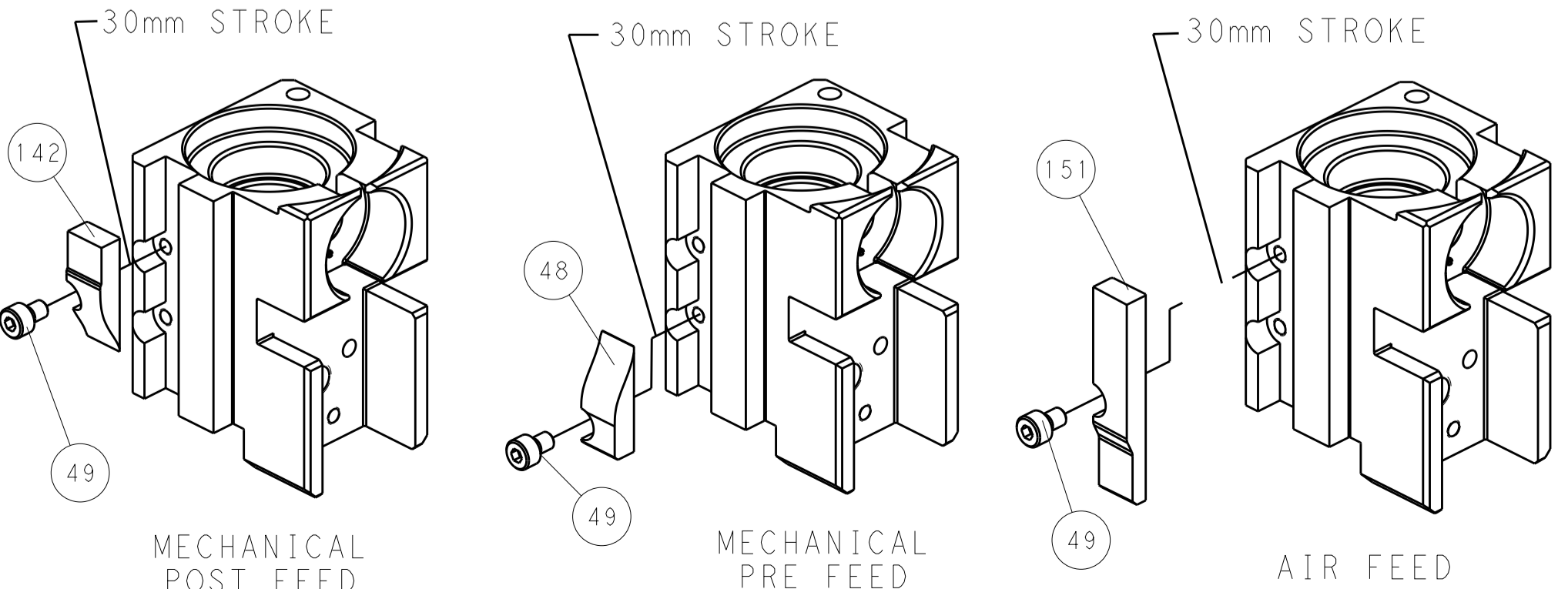
### SERVO LATCH PLATE



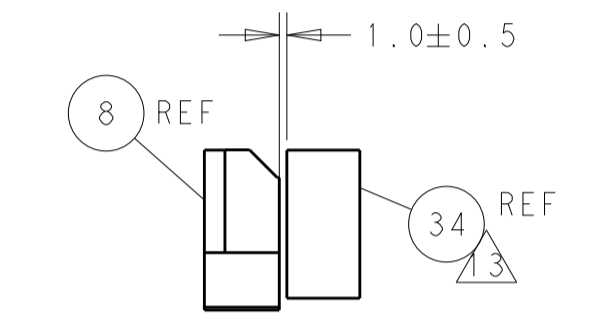
### DOUBLE ACTING PNEUMATIC WITH SENSORS



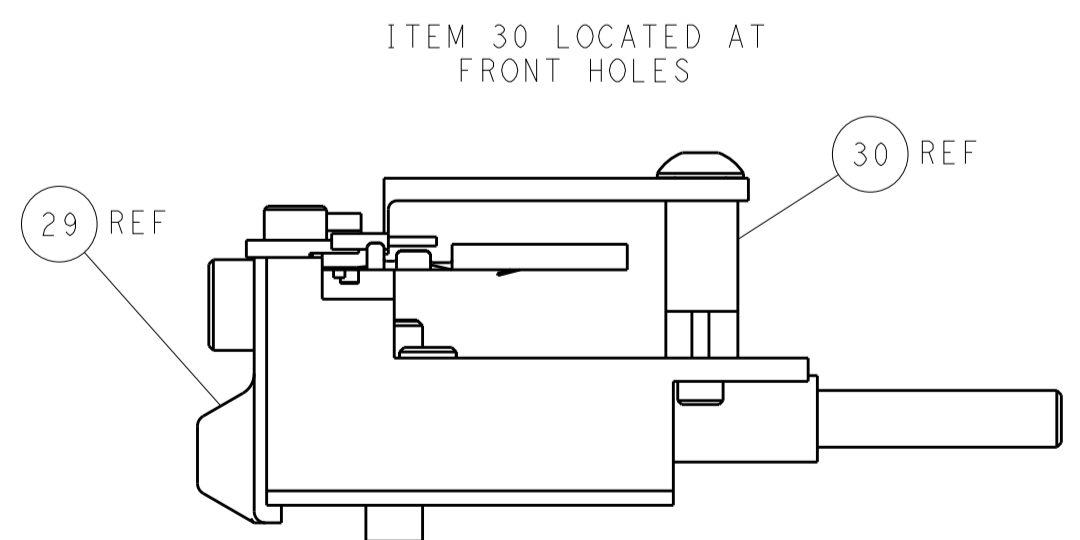
### CAM POSITIONS



TERMINAL SUPPORT LOCATION FOR ALL PIN TERMINALS



TERMINAL SUPPORT LOCATION FOR ALL SOCKET TERMINALS



FEED TRACK POSITION GUIDE BY INSULATION BARREL

**PACIFIC VERSION**  
 Shown on sheets 3 of 4 & 4 of 4  
 (Atlantic version shown on sheets 1 of 4 & 2 of 4)

DIMENSIONS:		TOLERANCES UNLESS OTHERWISE SPECIFIED:		DWG: J. HOU 06FEB2015		CHK: L. ZHANG 06FEB2015		APVD: H. GUO 06FEB2015		NAME: Ocean Side Feed Applicator	
mm	0 PLC ±	1 PLC ±	2 PLC ±	3 PLC ±	4 PLC ±	ANGLES ±	MATERIAL:		FINISH:		RESTRICTED TO:
MATERIAL:		FINISH:		WEIGHT:		SIZE: A1		CAGE CODE: 00779		DRAWING NO: C=2266673	
Customer Accessible Production Drawing				SCALE: 1:2		SHEET: 4 of 4		REV: G1			