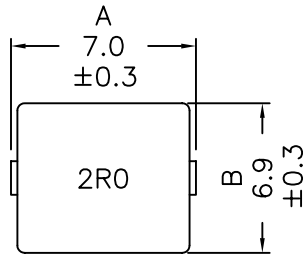
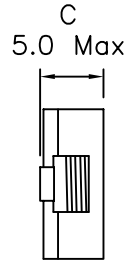


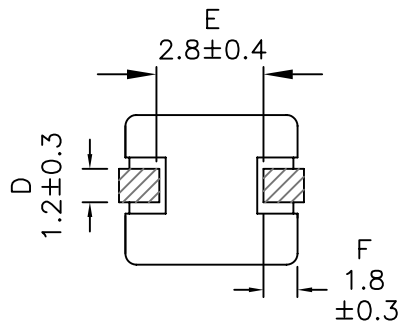
### 1. Mechanical Dimensions:



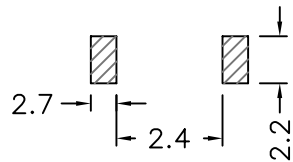
Top view



Side view

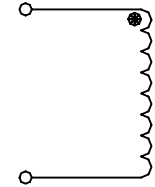


Bottom view



Typical Pad Layout

### 2. Schematic:



### 3. Electrical Specifications:

OCL: 2.00uH±20% @100KHz 0.1V

1.35uH Typ @100KHz 0.1V, 11.5A

Q: 12 Min @100KHz 0.1V

Isat: 9.0Adc (Based on 30% Typ drop in OCL)

Irms: 11.5Adc Typ (Based on 50°C Temp Rise)

DCR: 7 mOhms Max

SRF: 50MHz Min

**Notes:**

1. Solderability: Leads shall meet MIL-STD-202G, Method 208H for solderability.
2. Flammability: UL94V-0
3. ASTM oxygen index: > 28%
4. Insulation System: Class F 155°C. UL file E151556
5. Operating Temperature Range: All listed parameters are to be within tolerance from -40°C to +150°C
6. Storage Temperature Range: -40°C to +100°C
7. Aqueous wash compatible
8. SMD Lead Coplanarity: ±0.004"(0.102mm)
9. Electrical and mechanical specifications 100% tested
10. RoHS Compliant Component

DOC. REV: A/2

<b>XFMRs Inc.</b> www.XFMRs.com	Title: <b>SMD INDUCTORS</b>		
	UNLESS OTHERWISE SPECIFIED	P/N: XFHCL6MD-2R0M	REV. A
TOLERANCES: .xx ±0.25	DWN.	Feng	Jul-04-12
Dimensions in MM	CHK.	YK Liao	Jul-04-12
SHEET 1 OF 1	APP.	BW	Jul-04-12