

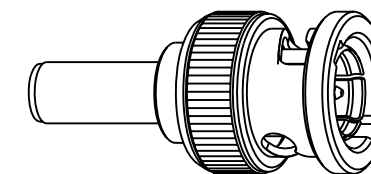
NOTES:

- MATERIALS OF CONSTRUCTION:
 SHELL, BODY, FERRULE & RETAINER RING = BRASS (QQ-B-626), NICKEL PLATED
 CONTACT PIN = BRASS (QQ-B-626), GOLD PLATED
 WASHER = BRASS (QQ-B-613), NICKEL PLATED
 SPRING = COPPER, NICKEL PLATED
 INSULATOR = TEFLON PER MIL-P-19468
 GASKET = SILICONE RUBBER, COLOR RED
- CRIMPED FERRULE: HEX CRIMP SIZE .178
 CRIMPED CONTACT PIN: SQ. CRIMP SIZE .042

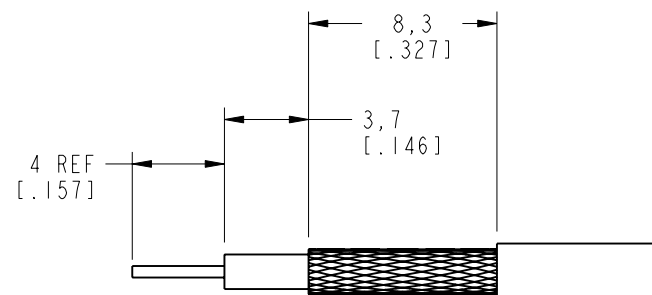
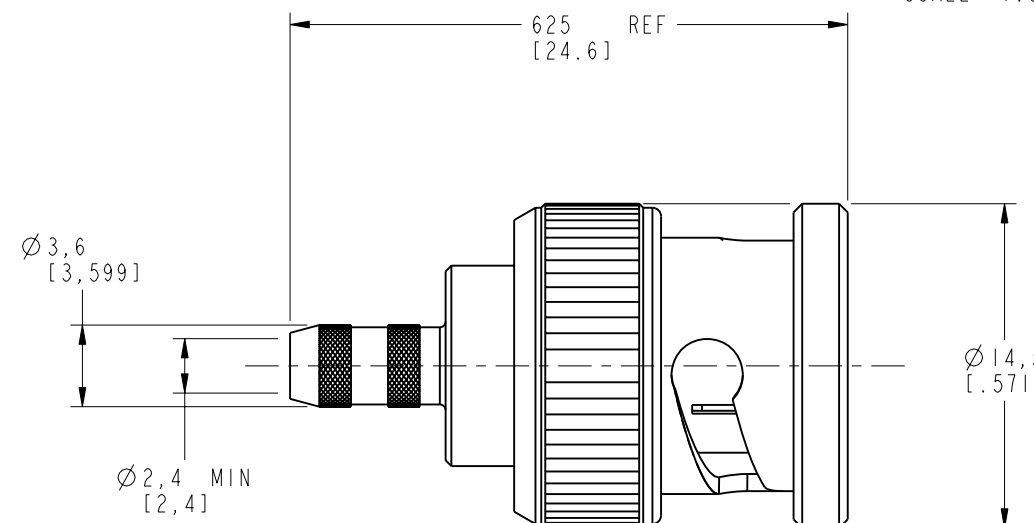
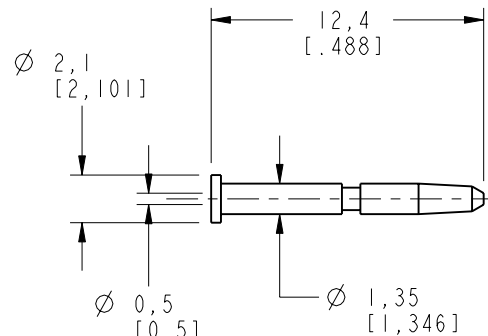
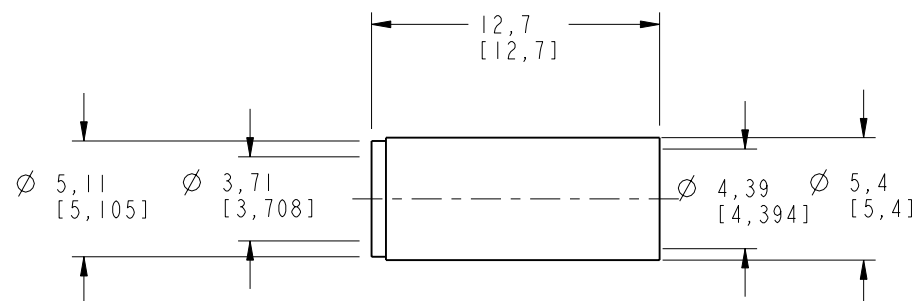
31-70238

DRAWING NO. THIRD ANGLE PROJ.

REVISIONS					
REV	DESCRIPTION	DATE	ECO	APPR	
A	RELEASE TO MFG.	4/13/00	43311	CPM	
B	NOTE 2 .178 WAS .187	4/25/02	44027	CPM	
C	ADD 735A CABLE TO TITLE BLOCK	10/4/06	46301	CPM	



SCALE 1.500



RECOMMENDED CABLE STRIPPING DIM'S. SCALE 3.000

CUSTOMER OUTLINE DRAWING
ALL OTHER SHEETS ARE FOR INTERNAL USE ONLY

UNLESS OTHERWISE SPECIFIED, DIMENSIONS ARE IN MM (INCHES) AND TOLERANCES ARE:
 0.5 - 6mm ±0.2mm 6 - 30mm ±0.4mm 30 - 120mm ±0.6mm

NOTICE - These drawings, specifications, or other data (1) are, and remain the property of Amphenol Corp. (2) must be returned upon request; and (3) are confidential and not to be disclosed to any person other than those to whom they are given by Amphenol Corp. The furnishing of these drawings, specifications, or other data by Amphenol Corp., or to any other person to anyone for any purpose is not to be regarded by implication or otherwise in any manner licensing, granting rights or permitting such holder or any other person to manufacture, use or sell any product, process or design, patented or otherwise, that may in any way be related to or disclosed by said drawings, specifications, or other data.

MATERIAL	DRAWN C. McGRATH	DATE 03-Apr-00	TITLE BNC CRIMP PLUG FOR 735A CABLE
REFERENCE EAR 967499-0 GEN# ASSYM3_BNC75	ENGINEER T. AUBIN	DATE 03-Apr-00	Amphenol Amphenol Corporation Communication and Network Products Division Danbury, CT U.S.A. 06810
	APPROVED T. AUBIN	DATE 4/12/00	
	CAD FILE I:\BNC75\31-70238	CODE ID 74868	DWG SIZE B

DRAWING NO.	DATE	REV	ECO	APPR
31-70238	03-Apr-00	A	43311	CPM
	03-Apr-00	B	44027	CPM
	4/12/00	C	46301	CPM

SCALE: 3.0:1		SHEET 2 OF 2	
DRAWING NO.	REV		
31-70238	C		