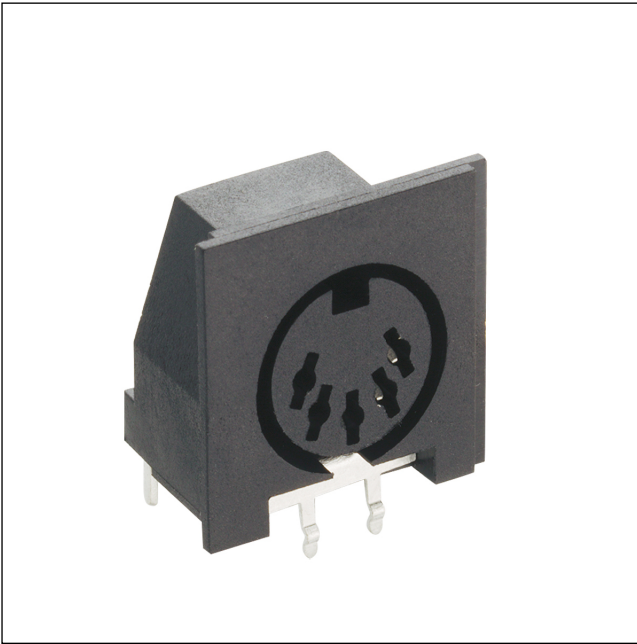


01 WB

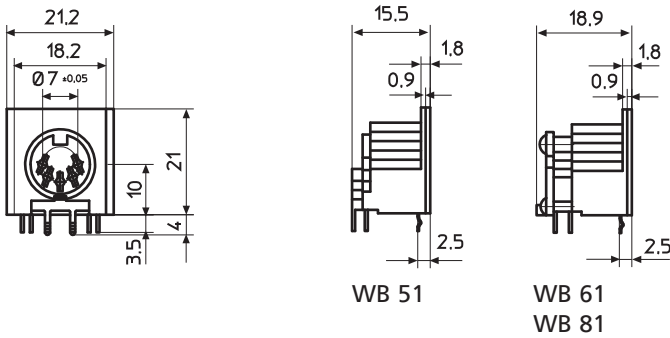
DIN circular connectors



DIN chassis socket, right angle version, for printed circuit boards

State: Phasing out

01 WB

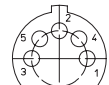


Electrical data (at T_{amb} 20 °C)

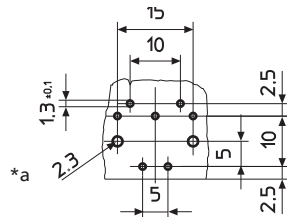
| | |
|---------------|--------------------|
| Rated current | 4 A |
| Rated voltage | 34 V DC 24 V AC |

Pin configuration and printed circuit board layouts

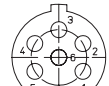
DIN 41524



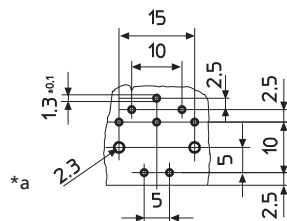
WB 51



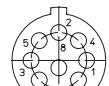
DIN 45322



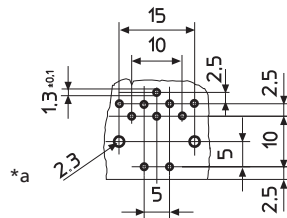
WB 61



DIN 45326



WB 81



*a holes for additional fixing screws 2.2 x 6.5 mm

01

WB

| Designation | Pole Number | PU (Pieces) | MDQ (Pieces) |
|-------------|-------------|-------------|--------------|
| WB 51 | 5 | 500 | 500 |
| WB 61 | 6 | 500 | 500 |
| WB 81 | 8 | 500 | 500 |