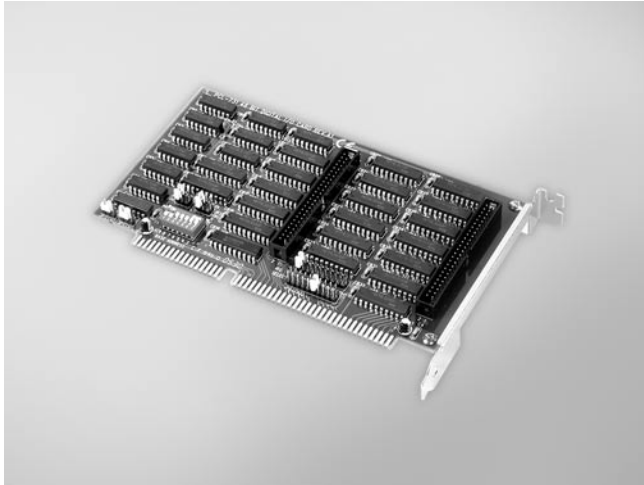


PCL-731

48-ch Digital I/O ISA Card



Features

- 48 TTL digital I/O channels
- Emulates mode 0 of 8255 PPI
- Interrupt handling
- Opto-22 compatible 50-pin connectors
- Output status readback

Specifications

Digital Input

- **Channels** 48 (shared with output)
- **Compatibility** 5 V/TTL
- **Input Voltage** Logic 0: 0.8 V max.
Logic 1: 2.0 V min.
- **Interrupt Capable Ch.** 2

Digital Output

- **Channels** 48 (shared with input)
- **Compatibility** 5 V/TTL
- **Output Voltage** Logic 0: 0.4 V max.
Logic 1: 2.4 V min.
- **Output Capability** Sink: 0.4 V max. @ 24 mA
Source: 2.4 V min. @ 15 mA

General

- **Bus Type** ISA
- **I/O Connectors** 2 x 50-pin box header
- **Dimensions (L x H)** 185 x 100 mm (7.3" x 3.9")
- **Power Consumption** Typical: +5 V @ 0.5 A
Max.: +5 V @ 0.8 A
- **Operating Temperature** 0 ~ 60° C (32 ~ 140° F)
- **Storage Temperature** -20 ~ 70° C (-4 ~ 158° F)
- **Storage Humidity** 5 ~ 95% RH, non-condensing (refer to IEC 68-2-3)

Ordering Information

- **PCL-731** 48-ch Digital I/O ISA Card
- **PCL-10150-1.2** 50-pin Flat Cable, 1.2 m
- **PCLD-782B** 24-ch IDI Board w/ 20-pin & 50-pin Flat Cables
- **PCLD-785B** 24-ch Relay Board w/ 20-pin & 50-pin Flat Cables
- **PCLD-7216** 16-ch SSR I/O Module Carrier Board
- **PCLD-885** 16-ch Power Relay Board w/ 20p & 50p Flat Cables
- **ADAM-3950** 50-pin DIN-rail Flat Cable Wiring Board

Pin Assignments

	CN1			CN2			
PC 07	1	2	GND	PC 17	1	2	GND
PC 06	3	4	GND	PC 16	3	4	GND
PC 05	5	6	GND	PC 15	5	6	GND
PC 04	7	8	GND	PC 14	7	8	GND
PC 03	9	10	GND	PC 13	9	10	GND
PC 02	11	12	GND	PC 12	11	12	GND
PC 01	13	14	GND	PC 11	13	14	GND
PC 00	15	16	GND	PC 10	15	16	GND
PB 07	17	18	GND	PB 17	17	18	GND
PB 06	19	20	GND	PB 16	19	20	GND
PB 05	21	22	GND	PB 15	21	22	GND
PB 04	23	24	GND	PB 14	23	24	GND
PB 03	25	26	GND	PB 13	25	26	GND
PB 02	27	28	GND	PB 12	27	28	GND
PB 01	29	30	GND	PB 11	29	30	GND
PB 00	31	32	GND	PB 10	31	32	GND
PA 07	33	34	GND	PA 17	33	34	GND
PA 06	35	36	GND	PA 16	35	36	GND
PA 05	37	38	GND	PA 15	37	38	GND
PA 04	39	40	GND	PA 14	39	40	GND
PA 03	41	42	GND	PA 13	41	42	GND
PA 02	43	44	GND	PA 12	43	44	GND
PA 01	45	46	GND	PA 11	45	46	GND
PA 00	47	48	GND	PA 10	47	48	GND
+5 V	49	50	GND	+5 V	49	50	GND