



GEL-2861 28-Port L2 Managed Gigabit Switch, 4 x SFP

## 28-Port L2 Managed Gigabit Switch, 4 x SFP

The GEL-2861 is a L2 managed switches designed for the SMB market. The switches can be deployed indifferent target network topologies, from small to large.As well as IPv4 and IPv6 features.

The GEL-2861 includes the best green-saving technologies(IEEE 802.3az and Green-Ethernet). Using the Energy Efficient Ethernet standard, the switch automatically decreases power usage when network traffic is low.

### Key Features

- IEEE 802.1d/w/s (STP) (RSTP)
- IEEE 802.3ad LACP
- 512KB ACL (ACL) (ACL) IEEE 802.1X (IEEE 802.1X)
- IP Multicast Filtering through IGMP Snooping V1 / V2 / V3
- Supports port-based VLAN, IEEE 802.1Q VLAN Tagging
- IPv6 (IPv6)
- IEEE 802.1p QoS with 8 priority queues

### System Specifications

#### Standards & Protocols:

- IEEE 802.3 10-BASE-T, Ethernet
- IEEE 802.3u 100-BASE-TX, Fast Ethernet
- IEEE 802.3ab 1000BASE-T, Gigabit Ethernet
- IEEE 802.3z 1000BASE-X,Gigabit Ethernet
- IEEE 802.1p Quality of Service (QoS)
- IEEE 802.1Q Virtual LANs (VLANs)
- IEEE 802.1D MAC Bridges
- IEEE 802.1d Standard Spanning Tree Protocol
- IEEE 802.1s Multiple Spanning Tree (MSTP)
- IEEE 802.1w Rapid Spanning Tree Protocol (RSTP)
- IEEE 802.3x Flow Control
- IEEE 802.3ad Link Aggregation Control Protocol (LACP)
- IEEE 802.3af Power over Ethernet (PoE)
- IEEE 802.3at Power over Ethernet Plus (PoE+)
- IEEE 802.3az Energy-Efficient Ethernet
- Link Layer Discovery Protocol (LLDP)
- Universal Plug and Play (UPnP)

#### Memory:

32MB

**Buffer Memory:**

4.1Mbits

**Connectors and Cabling:**

24x RJ-45 10/100/1000BASE-T ports

4 x 100/1000Base-X SFP Slots

**Button/Knob:**

Reset / Factory Default Button

**Indicator:**

Power; Link/Active

**Transmission Method:**

Store-and-Forward

**Power Input:**

100-240V AC, 50-60 Hz, Internal Power Supply

**Power Consumption:**

< 20W

## Features

**General:**

Quality of Service (QoS):

8 hardware Priority Queues per port

Traffic classification based on IEEE 802.1p CoS

IPv4/IPv6 precedence/ type of service (ToS) / DSCP based

Rate Limiting - Ingress policer egress shaping and rate control

Spanning Tree:

Bridge Protocol Data Units (BPDU)

IEEE 802.1D MAC Bridges

IEEE 802.1d Spanning Tree Protocol (STP)

IEEE 802.1w Rapid Spanning Tree Protocol (RSTP)

IEEE 802.1s Multiple Spanning Tree Protocol (MSTP)

Virtual Local Area Network (VLAN):

802.1Q tag-based VLAN - up to 4K VLANs and 4K VLAN IDs

Port-based VLAN

MAC-based VLAN

DHCP: DHCP Client; DHCP Relay (Layer 2)

IPv6:

IPv6 Ping / Trace /Telnet / Syslog / TFTP

IGMP:

IGMP v1/v2/v3 snooping; IGMP Queried; IGMP Filtering /Throtting

Port Mirroring:

One to One /One to Many

IEEE 802.3ad LACP Trunk

**Security:**

DDOS Protection

CPU Guard

Port Isolation

Port Mirror /Remote Mirror

Broadcast / Multicast / Unknown Storm Control

802.1X

ACL

Port Security

MAC Filter / MAC Authentication

AAA

IP Source Guard

SSH

**Management:**

System Password protection  
NTP/SNTP  
Dual Image /Configuration  
Firmware upgrade /download (HTTP/TFTP/FTP)  
RMON/ SNMP  
Management Access ( Console / SNMP/ Web / Telnet )  
Memory Flash Log  
Event /Error Log  
DHCP v4/v6 Snooping  
DHCP Snooping Option82

**Ease of Use:**

Dashboard

**Performance****Backplane (Gbps):**

56Gbps

**MAC Address Table:**

8K

**Data Transfer Rate:**

10/100/1000Mbps

**Packet Forwarding Rate:**

41.7 Mpps

**Jumbo Frame (K):**

10K

**Environment****Power Saving:**

IEEE 802.3az Energy Efficient Ethernet:

- Automatically turns power off on RJ-45 port when detecting link down or Idle of client
- Cable length detection: Adjusts the signal strength based on the cable length
- Reduces the power consumption for cables shorter

**Acoustic Noise:**

0 dB (A)

**Heat Dissipation:**

68,242 (Btu/H)

**Temperature (°C):**

0-50 C

**Humidity (Non-condensing):**

10-90%

**Deployment:**

desktop & 19-inch rack-mountable

**Physical Specifications****Dimensions (W x D x H mm):**

440\*220\*44mm

**Weight (g):**

4600g with box, 2400g without box



## Reliability

### MTBF:

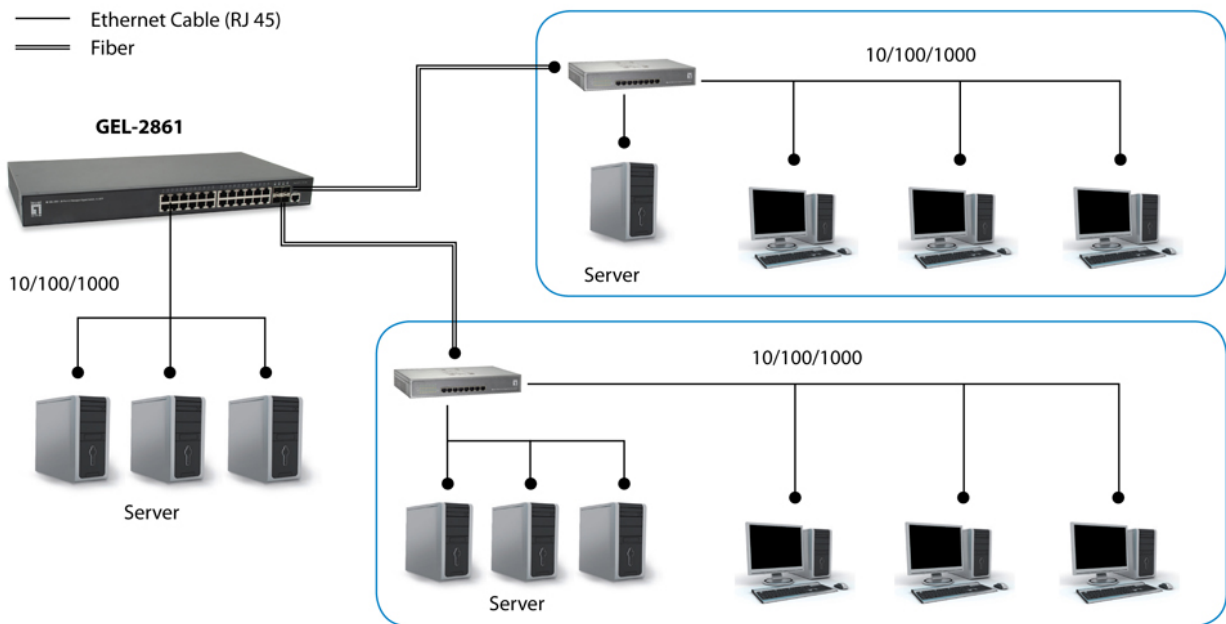
25 degreeC: 563,826 hrs

45 degreeC: 314,969 hrs

## Approval and Compliance

### EMI/EMS:

CE classA, FCC, UL, VCCI, BSMI



## Order Information

GEL-2861

## Package Contents

GEL-2861

Power Cord

Quick Installation Guide

Resource CD (User Manual, QIG)

Console Cable

19" Rackmount Kit

No liability or responsibility for any errors or omissions in the content.  
Specifications are subject to change without notice.  
All mentioned brand names are registered trademarks and property of their owners.  
Copyright © Digital Data Communications GmbH, Germany. All Rights Reserved.