

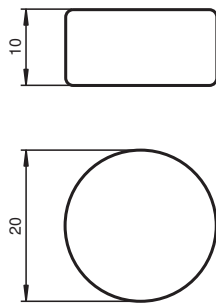
Magnet

DM 20-10 NDFEB



Permanent magnet for hydraulic cylindrical magnetic field sensors

Dimensions



Technical Data

Ambient conditions	
Ambient temperature	max. 120 °C (248 °F)
Mechanical specifications	
Material	NdFeB acc. to ratio 262/135
Dimensions	Height: 10 mm Diameter: 20 mm
Coating	Ni + Sn (approx. 10-15 µm)

Release date: 2020-03-20 Date of issue: 2020-06-29 Filename: 041216_eng.pdf

Refer to "General Notes Relating to Pepperl+Fuchs Product Information".

Pepperl+Fuchs Group
www.pepperl-fuchs.com

USA: +1 330 486 0001
fa-info@us.pepperl-fuchs.com

Germany: +49 621 776 1111
fa-info@de.pepperl-fuchs.com

Singapore: +65 6779 9091
fa-info@sg.pepperl-fuchs.com

 **PEPPERL+FUCHS**

Technical Features

The NeoDeltaMagnet consists of NdFeB (neodymium iron boron), the "strongest" available magnet material. The surface is protected against corrosion by a coating of stannous on nickel.

The ring magnets have an axial magnetisation. The dimensional tolerance usually amounts to ± 0.1 mm.

Characteristic		Value	
Power product	(W x H) max.	262 ... 288	kJ/m^3
Remanence	B_r	1170 ... 1250	mT
Coercive field strength	J_{H_C}	>1350	kA/m
Coercive field strength	B_{H_C}	> 860	kA/m
Relative remanent permeability	$\mu_0 \mu_r$	1.07	mT/ kA/m
Temperature coefficient of the remanence	α	- 0.10	%/°C
Density	r	7.4	g/cm^3