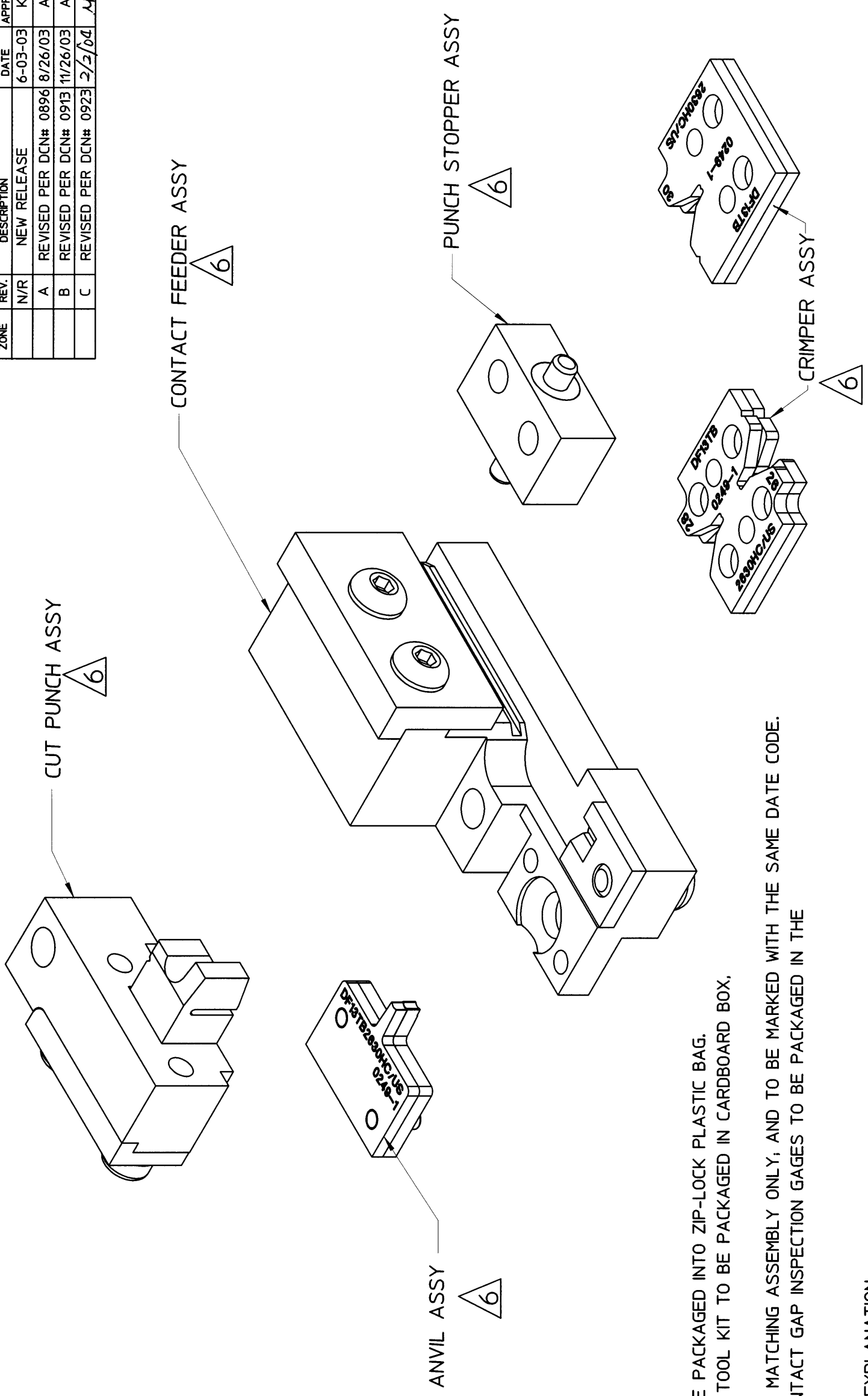


THE INFORMATION CONTAIN HEREIN IS PROPRIETARY TO HIROSE ELECTRIC (USA), INC.. ALL RIGHTS THEREIN ARE RESERVED AND SHALL NOT BE USED, DUPLICATED, OR FURTHER DISSEMINATED FOR ANY PURPOSE WITHOUT THE CONSENT OF HIROSE ELECTRIC (USA), INC.

ZONE	REV.	DESCRIPTION	DATE	APPROVED
	N/R	NEW RELEASE	6-03-03	KMG
	A	REVISED PER DCN# 0896	8/26/03	A.S.
	B	REVISED PER DCN# 0913	11/26/03	A.S.
	C	REVISED PER DCN# 0923	3/2/04	M.N.



- 12. PACKAGING: SIX (6) DIE SET ASSEMBLIES TO BE PACKAGED INTO ZIP-LOCK PLASTIC BAG. PLASTIC BAG WITH DIE SET ASSEMBLIES AND TOOL KIT TO BE PACKAGED IN CARDBOARD BOX. SIZE 203mm X 76mm X 51mm (8" X 3" X 2").
- 11. ANVIL ASSY AND CRIMPER ASSY ARE SOLD AS MATCHING ASSEMBLY ONLY, AND TO BE MARKED WITH THE SAME DATE CODE.
- 10. TOOL KIT, ALL APPLICABLE SCREWS, AND CONTACT GAP INSPECTION GAGES TO BE PACKAGED IN THE ZIP-LOCK PLASTIC BAG, AS SHOWN IN FIG 1.

- 9. LABEL TO BE APPLIED AS SHOWN.
- 8. DATE CODE AND SET No.: SEE EXAMPLE FOR EXPLANATION.
- 7. PART/No. DF13-TB2630HC/US-DS TO BE PURCHASED AS A SET ONLY.
- 6. RECOMMENDED NUMBER OF CRIMPING CYCLES - 15,000.
- 5. FOR ASSEMBLY, INSTALLATION AND OPERATION OF THIS DIE SET, AND CONTACT GAP INSPECTION, REFER TO INSTRUCTION MANUAL P/No. PS078.
- 4. THIS DIE SET IS RECOMMENDED TO BE USED ONLY WITH APPLICABLE HAND CRIMP TOOL, P/No. HRUS-HT-1, AND TO CRIMP CONTACT, P/No. DF13-2630SCF/SCFA.
- 3. APPLICABLE WIRE STYLE: UL 1061, AWG 26, 28 AND 30.
- 2. MATERIALS: TOOL STEEL.
- 1. DIMENSIONS IN () ARE FOR REFERENCE ONLY
- 1. DIMENSIONING AND TOLERANCING PER ANSI/ASME Y14.5M-1994

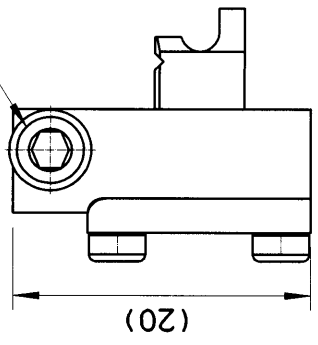
NOTES (UNLESS OTHERWISE SPECIFIED)

CUSTOMER USE DRAWING

0AG18 <small>FORM NO.</small> <small>THIRD ANGLE PROJECTION</small>	<small>UNLESS OTHERWISE SPECIFIED DIMENSIONS ARE IN MILLIMETERS TOLERANCES ARE:</small> X = ±0.1 .XX = ±0.05 .XXX = ±0.03 ANGLE = ±1°		HRS HIROSE ELECTRIC (U.S.A), INC SIMI VALLEY, CALIFORNIA 93065	
	<small>APPROVALS</small> <small>DATE</small>	<small>DATE</small>	<small>CL NUMBER</small>	<small>REV.</small>
<small>PROJECT NO.</small>	<small>Checked</small> Luis Lostaunau <small>Checked</small> Alla Shchur <small>Checked</small> Mac Nagashima <small>Checked</small> Kris McGuire	<small>DATE</small> 05/05/03 05/20/03 05/30/03 06/03/03	<small>CL NUMBER</small> 5920-8502-5	<small>REV.</small> C
<small>XXXXXXX</small> <small>USED ON</small>	<small>APPLICATION</small>	<small>SIZE</small> B	<small>DWG NUMBER</small> DF13-TB2630HC/US-DS	<small>SHEET</small> 1 OF 2
<small>NEXT ASY.</small>	<small>SCALE</small> N/A	<small>REV.</small> C	<small>CL NUMBER</small> DF13-TB2630HC/US-DS	<small>SHEET</small> 1 OF 2

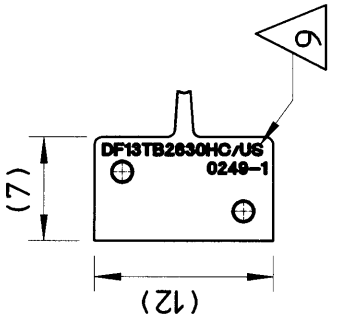
THE INFORMATION CONTAIN HEREIN IS PROPRIETARY TO HIROSE ELECTRIC (USA), INC., ALL RIGHTS THEREIN ARE RESERVED AND SHALL NOT BE USED, DUPLICATED, OR FURTHER DISSEMINATED FOR ANY PURPOSE WITHOUT THE CONSENT OF HIROSE ELECTRIC (USA), INC.

M3 SOCKET HEAD CAP SCREW, 12 mm LONG, SHOWN FOR REFERENCE ONLY, NOT INSTALLED

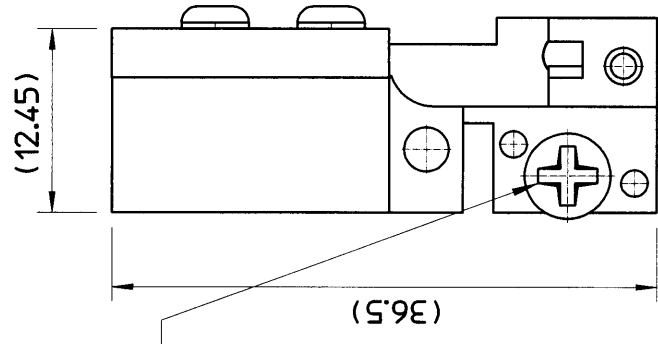


CUT PUNCH ASSY

M3 FLAT HEAD PHILLIPS MACHINE SCREW, 6 mm LONG, SHOWN FOR REFERENCE ONLY, NOT INSTALLED

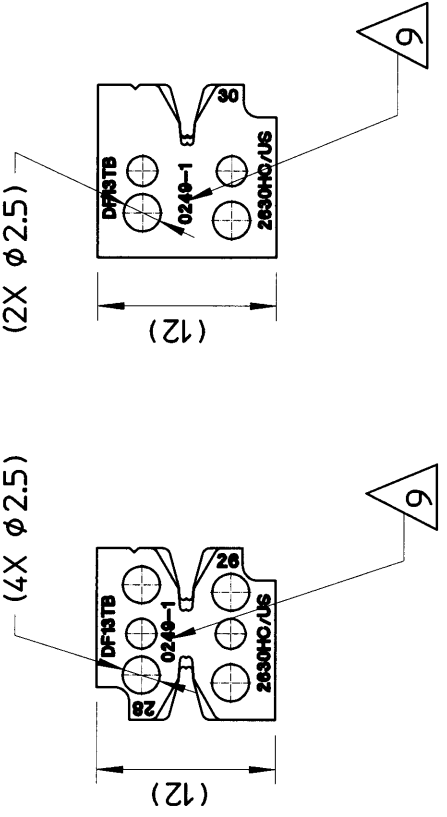


ANVIL ASSY

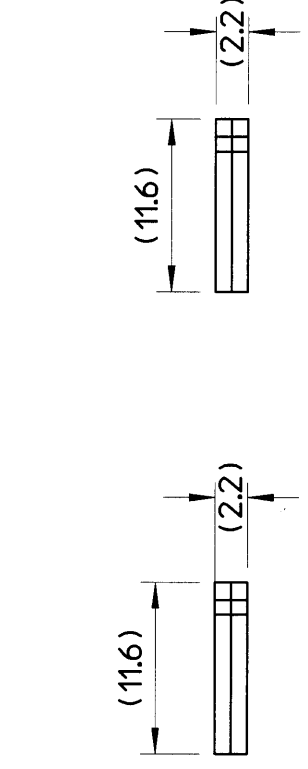


CONTACT FEEDER ASSY

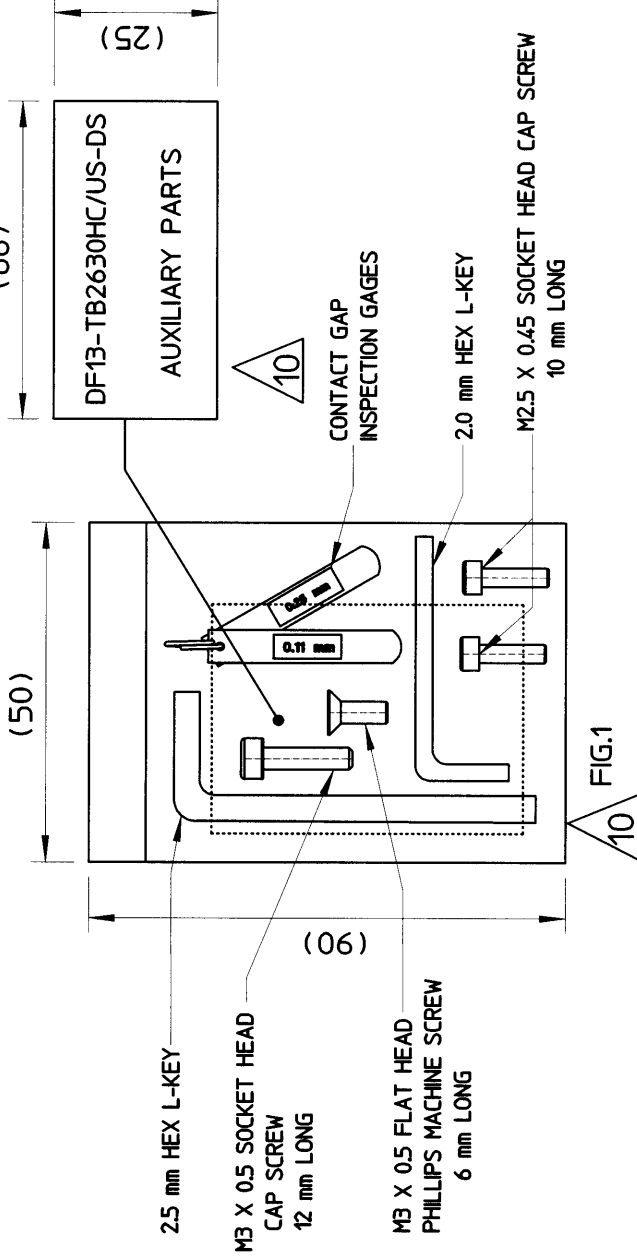
M2.5 SOCKET HEAD CAP SCREW, 10 mm LONG, SHOWN FOR REFERENCE ONLY, NOT INSTALLED



CRIMPER ASSY



PUNCH STOPPER ASSY



DATE CODE EXPLANATION:
 9 0249-1
 YEAR WEEK SET No.

ZONE	REV.	DESCRIPTION	DATE	APPROVED
	A	REVISED PER DCN# 0896		
	B	REVISED PER DCN# 0913	11/26/03	A.S.
	C	REVISED PER DCN# 0923	2/2/04	M.N.

CUSTOMER USE DRAWING

		HIROSE ELECTRIC (U.S.A), INC SIMI VALLEY, CALIFORNIA 93065	
PART NUMBER DF13-TB2630HC/US-DS		CL NUMBER 5920-8502-5	
PROJECT NO. XXXXXXXX		DATE 05/05/03	
DRAWN Luis Lostana		CHECKED XXXXXX	
NEXT ASSY. USED ON		SIZE B	
APPLICATION		DWG NUMBER DF13-TB2630HC/US-DS	
APPROVALS		SCALE N/A	
UNLESS OTHERWISE SPECIFIED DIMENSIONS ARE IN MILLIMETERS TOLERANCES ARE: X = ±0.1 .XX = ±0.05 .XXX = ±0.03 ANGLE = ±1°		SHEET 2 OF 2	