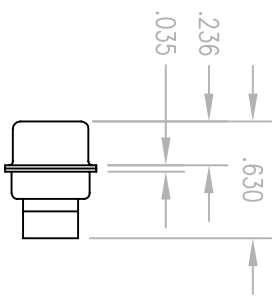
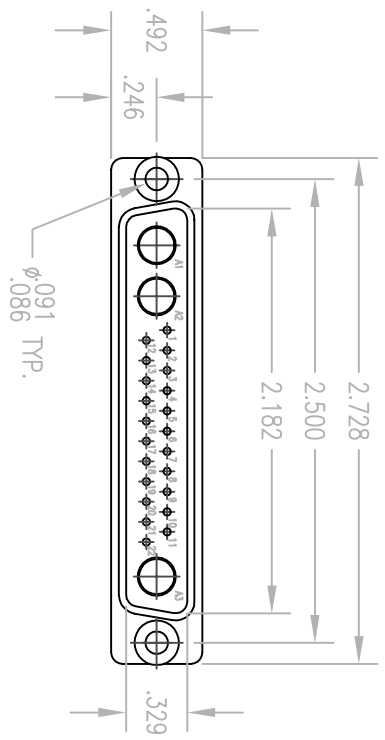
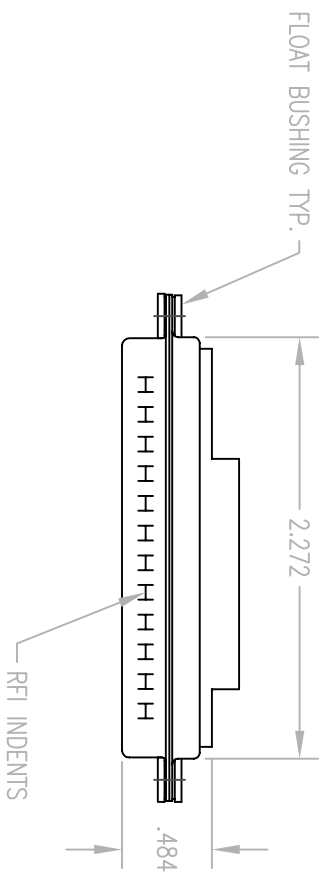


REV.	DESCRIPTION	DATE	BY	APPD.
B	RELEASED PER NPR 1664A	02/29/00	ET	



- NOTES:
1. MATERIALS:  
SHELL AND BUSHINGS: STEEL PER ASTM A568  
INSULATOR: GLASS FILLED POLYESTER
  2. FINISH:  
SHELL AND BUSHINGS: TIN PLATE PER ASTM B545  
INSULATOR: BLACK
  3. CONTACT ARRANGEMENT:  
(22) SIGNAL CONTACTS (NOT SUPPLIED)  
(3) COAX OR POWER CONTACTS (NOT SUPPLIED)

PER ASME Y14.5M-1994  
UNLESS OTHERWISE SPECIFIED:  
TOLERANCES ARE IN INCHES (MIL)  
DECIMALS .XX ± .01/0.254  
FRACTIONS .XXX ± .005/0.127  
ANGLES ± Z'  
SCALE: 1:1

**LITTON**  
Winchester/Reticon  
400 Park Road  
Waterford, Connecticut 06795

DATE	APPROVED	DATE	APPROVED	DATE	APPROVED	DATE	APPROVED
02/03/00	JMC	02/03/00	JED	02/03/00	A	02/03/00	JMC

**CUSTOMER DRAWING**

25W3P POKE HOME D-SUB HOUSING

RP25W3P-12-TD

SHT. 1 OF 1