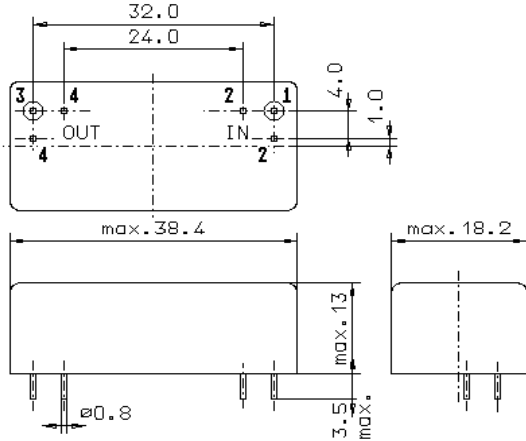


Specification for monolithic crystal filter:

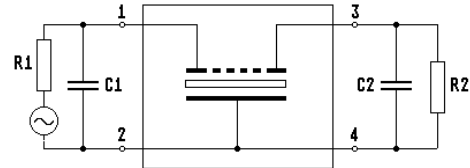
MQF 21.4-1500/64

1. General

1.1. Package:



GM17



- | | |
|-----------------------------------|------------------|
| 1.2. Type name: | MQF 21.4-1500/64 |
| 1.3. Number of poles: | 8 |
| 1.4. Operating temperature range: | -20°C to +70°C |
| 1.5. Storage temperature range: | -35°C to +85°C |

2. Electric values

- | | |
|---------------------------------------------------|---------------------------------------------|
| 2.1. Nominal centre frequency fo: | 21.4 MHz |
| 2.2. Pass band | |
| 2.2.1. Centre frequency fc: | 21.4 MHz ± 750 Hz |
| 2.2.2. Bandwidth between 3 dB - frequencies: | ≥ fo ± 7.5 kHz |
| 2.2.3. Ripple: | ≤ 2.0 dB at fo ± 6.0 kHz |
| 2.2.4. Insertion loss: | ≤ 3.5 dB |
| (measured on smallest attenuation in pass band) | |
| 2.3. Stop band | |
| 2.3.1. fo ± 17 kHz | ≥ 70 dB |
| 2.3.2. fo ± 22 kHz.....±500 kHz | ≥ 90 dB |
| 2.4. Terminating impedance (input and output): | 50 Ω // 0 pF |
| 2.5. Intermodulation | |
| IP 3: | > 30 dBm |
| frequencies: | 21.35 MHz / 21.30 MHz |
| frequencies: | 21.45 MHz / 21.50 MHz |
| input power: | 0 dBm |
| IM: | > 60 dB |
| 3. Marking: | manufacturer, date code
MQF 21.4-1500/64 |
| 4. Environment conditions: | Corresponding to Vectron standard CF001 |

Edited by: _____ date: _____ name: _____