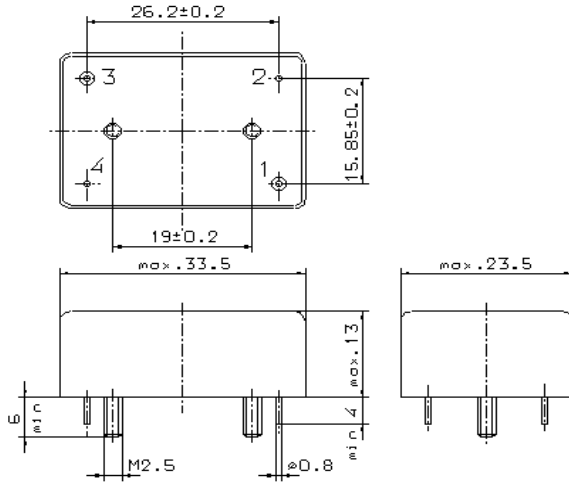


Specification for monolithic crystal filter series

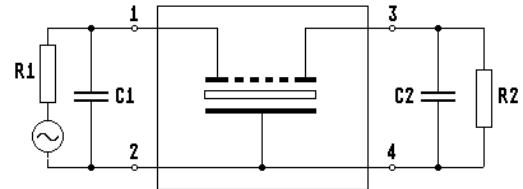
MQF 60.0.....130.0-1500/C

1. General

1.1. Package:



GM 33



1.2. Type name:

MQF 60.....130-1500/C

1.3. Number of poles:

4

1.4. Operating temperature range:

-20°C to +70°C

1.5. Storage temperature range:

-35°C to +80°C

2. Electric values

2.1. Nominal center frequency f_0 :

60.....130 MHz

T.B.D. by customer for each order

2.2. Pass band

2.2.1. Bandwidth between 3 dB - frequencies:

$\geq f_0 \pm 7.5$ kHz

2.2.2. Ripple:

≤ 1.0 dB at $f_0 \pm 5.0$ kHz

2.2.3. Insertion loss:

≤ 4.0 dB

(measured on smallest attenuation in pass band)

2.3. Stop band

2.3.1. $f_0 \pm 30$ kHz

≥ 20 dB

2.3.2. $f_0 \pm 60$ kHz

≥ 60 dB (except spurious)

2.3.3. $f_0 \pm 910$ kHz

≥ 80 dB (except spurious)

2.4. Terminating impedance (input and output):

$50 \Omega // 0$ pF

2.5. Maximum input power level:

0 dBm / +10 dBm (working / non-damaged)

3. Marking:

manufacturer, date code

MQF xx.xxx-1500/C

e. g. for center frequency 69.325 MHz filter part description is: MQF 69.325-1500/C

4. Environment conditions:

Corresponding to Vectron standard CF001

Edited by: _____ date: _____ name: _____