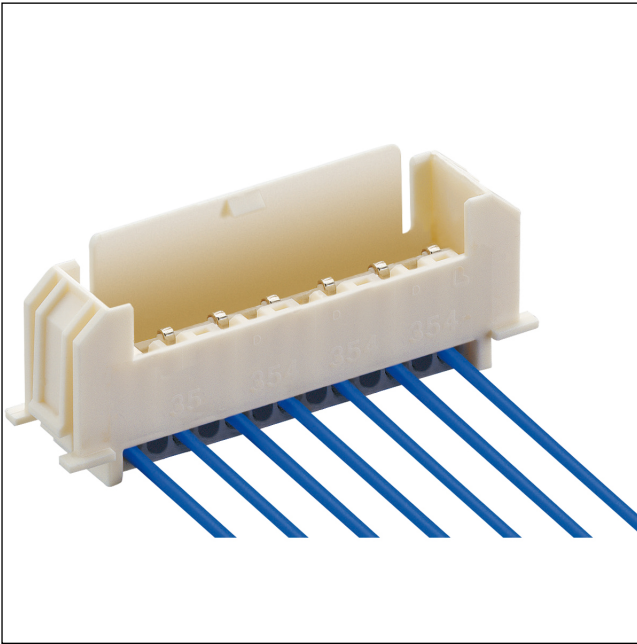


35

3546

RAST 2.5 connectors, pitch 2.5/5.0 mm



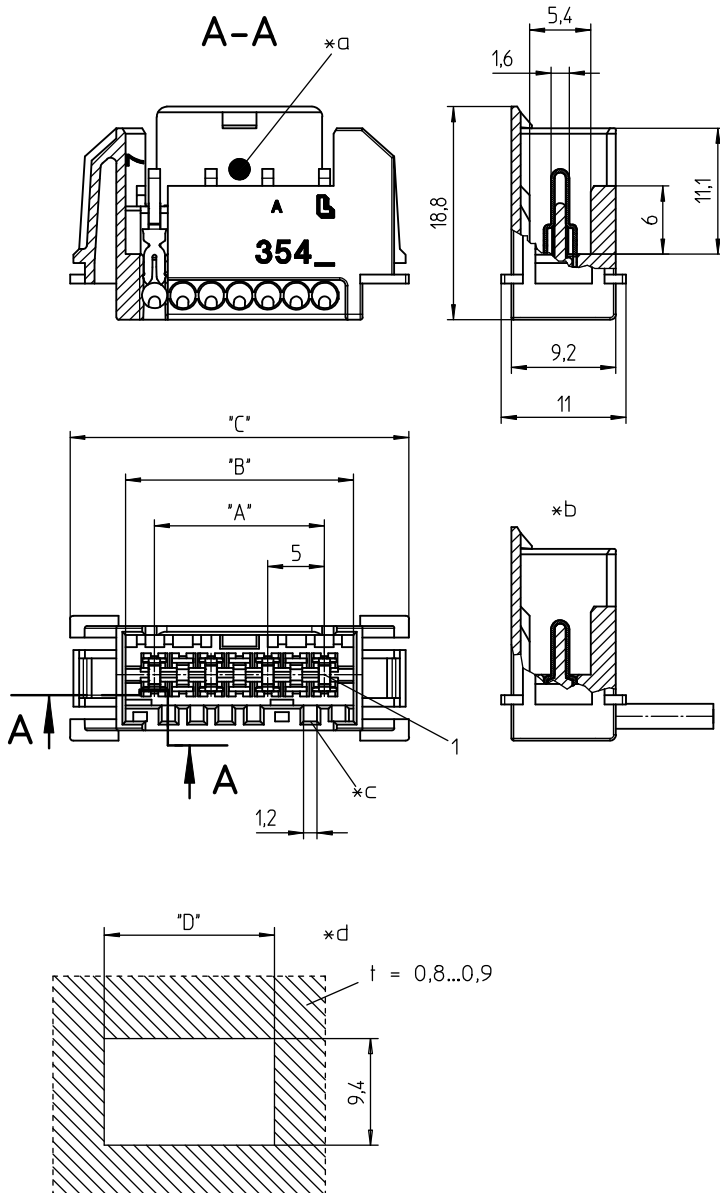
RAST 2.5 chassis pin header, insulation displacement technology (IDT), with locking latch
contact pitch 5.0 mm

State: Active

Approvals:  

35

3546



- *a blue color marking on 3546 (M..)S01
- *b terminated connector
- *c keying
- *d space for customer-specific color marking

Environmental conditions

Temperature range -40 °C/+130 °C¹
¹ upper limit temperature (insulating body) RTI (electrical) of the UL Yellow Card


Materials

Insulating body PA GF, V-0 according to UL94¹
 Contact pin CuSn, tin-plated
¹ component glow wire resistant acc. to IEC 60695-2-11 and IEC 60335-1 respectively (GWT 750 °C without flame)

Mechanical data

Keying proposals at www.lumberg.com 






Connectable conductors for IDT area






Construction discrete conductor, notched flat cable 2.5 mm
 Section min. 0,22 mm²
 Section max. 0,50 mm²
 Insulation diameter ≤ 1,65 mm
 Approved cables at www.lumberg.com 

Electrical data (at T_{amb} 20 °C)

Rated current 4 A (T_v 60 °C)
 2 A (T_v 100 °C)
 6 A (T_v 85 °C, nur mit 3570)
 Rated voltage 250 V AC
 Material group IIIa (IEC)/2 (UL) (CTI ≥ 250)
 Creepage distance ≥ 3,0 mm
 Clearance ≥ 3,0 mm
 Insulation resistance > 1 GΩ

Associated products

Counterparts
 3523  3523-2  352300
 3570  357000

Harnessing equipment
 HA3...e  HA354e-ST  HZ354
 KHP3545/46-SW  VARICON 7000-RD

35

3546

Designation	Pole Number	PU (Pieces)	MDQ (Pieces)	Dimensions			
				A (mm)	B (mm)	C (mm)	D (mm)
3546 02	2	500	1000	5	10.1	19.9	17.5
3546 03	3	500	1000	10	15.1	24.9	22.5
3546 04	4	500	1000	15	20.1	29.9	27.5
3546 05	5	500	1000	20	25.1	34.9	32.5
3546 06	6	500	1000	25	30.1	39.9	37.5
3546 07	7	500	1000	30	35.1	44.9	42.5
3546 08	8	500	1000	35	40.1	49.9	47.5
3546 09	9	500	1000	40	45.1	54.9	52.5
3546 10	10	500	1000	45	50.1	59.9	57.5

Designation to be completed by further details (e.g. for keying, color or material options).

Packaging:

in bulk, in a cardboard box – in bar stock carriers upon request