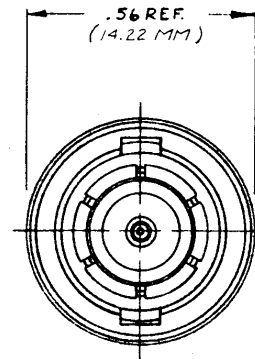
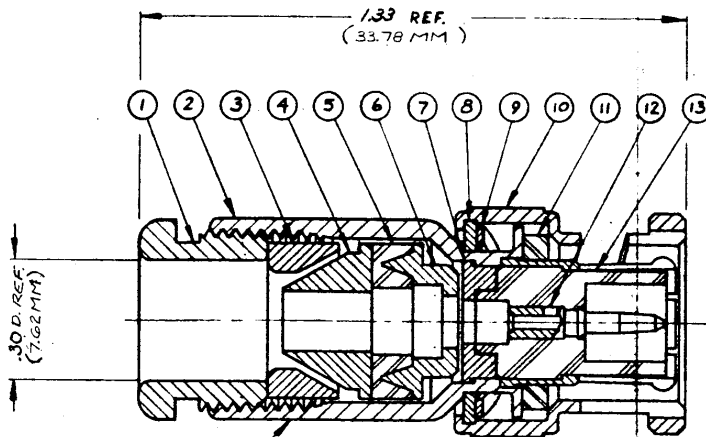


DASH NO. M CODE MADE FROM



STAMP: 380-10072-1
 82918
 MFR 91836
 KC-59-599-M07
 XX XX
 YEAR WEEK.

- NOTES
1. FOR USE WITH CABLE: BOEING D3-7619-5/336
 2. ITEM (2) TO BE SUPPLIED UNASSEMBLED
 3. FOR CABLING INSTRUCTIONS SEE 3-145.

UNLESS OTHERWISE SPECIFIED:

1. TOLERANCES: FRACTIONS & 2 PLACE DECIMALS ± .010	2. REMOVE ALL BURRS, BREAK SHARP EDGES .005 MAX.
3 PLACE DECIMALS ± .004	3. NO FILLETS PERMITTED
T. I. R. CONCENTRICITY OF ANY 2 DIAMETERS MAY NOT EXCEED HALF THE SUM OF THEIR TOLERANCES.	4. SURFACE ROUGHNESS 83 MICRONS RMS MAX.
	5. ALL DIMENSIONS PRIOR TO PLATING
	6. ALL PLATING IN ACCORDANCE WITH KER 10004.

KC-59-599-M07
 (SHEET 1 OF 2)

REVISIONS	
ISSUE	CHANGES
0	ER 20901 KOR 21 JULY 80
1	CN 22917 E MD 11 JAN 82
2	CN 25247 E GL 11 OCT 83

S-D

SCALE:	4:1
USED ON:	
REF:	BOEING 380-10072-1A
BNC PLUG	
DRAWN: KFR	DATE: 17 JULY 80
APPR: [Signature]	DATE: 7/21/80
 KINGS ELECTRONICS CO. INC. <small>ESTABLISHED 1959</small>	
KC-59-599-M07 S-D	

(SHEET 1 OF 2)