



4 GE + 1 GE SFP Switch

GEU-0521



H/W Version: 1

LevelOne GEU-0521 is 5-port SOHO Gigabit Ethernet Switch that is designed for small or medium network environment to strengthen its network connection. This product is compact in size, making it ideal for SOHO users with limited space. This product is easy to install. It is a superb choice for expanding your network.

High-Speed Networking

GEU-0521 provides an excellent solution for expanding your Gigabit network. By Gigabit speed, this product provides high flexibility and high bandwidth connectivity to servers, workstations and other attached devices. It enables you to save time transferring large files.

Auto-MDI/MDI-X

Every port can automatically sense your type of cable, so there is no need for crossover cables whether you are connecting this switch to another switch or to a computer.

Auto-Negotiation

Every port can automatically sense if the connected network devices are running at 10Mbps, 100Mbps or 1000Mbps and Half/Full-Duplex mode, and adjust accordingly.

Non-Blocking

This switch receives and forwards traffic seamlessly with its non-blocking wire-speed. Every port simultaneously supports up to 2000Mbps of bandwidth in full-duplex mode. This feature provides full wire speed to the connected devices and allows you to run a smooth network.

Store and Forward

By this function, this switch can maximize network performance while minimizing the propagation of bad network packets.



1. LEDs
2. 10/100/1000Mbps RJ-45
3. SFP slot
4. AC 100-240V 50/60Hz
5. Wall-Mountable

Key Features

- 4-Port 10/100/1000Mbps + 1-SFP open slot NWay (Auto-negotiation) Switch
- Palm size with metal case
- Auto-learn of networking configurations
- Auto-detect full/half-duplex modes for any port
- Dedicated full-duplex 2000Mbps bandwidth
- Store-and-Forward switching methods
- IEEE 802.3x flow control for full-duplex and back-pressure flow control for half-duplex
- Non-blocking & Non-head-of-line blocking full wire speed forwarding
- Auto-MDI/MDI-X function for any port
- Smart plug & play

Works Well With



GNC-0106T
32/64 bit Gigabit Ethernet PCI Card



USB-0201
USB 2.0 to Gigabit Ethernet Adapter

Technical Specifications

Standards

IEEE 802.3 10BaseT
 IEEE 802.3u 100BaseTX
 IEEE 802.3ab 1000BaseT
 IEEE 802.3z 1000BaseSX/LX
 IEEE 802.3x Flow Control

Features

Number of Ports: 5 (4-port RJ-45 + 1-port SFP open slot)
 MAC Address: 1K
 Buffer Memory: 104KB
 Jumbo Frames: 9 KB
 Transmission Method: Store and Forward

Filtering/Forwarding Rates

1000Mbps port - 1,488,000pps
 100Mbps port - 148,800pps
 10Mbps port - 14,880pps

Transmission Media

RJ-45:
 10BaseT Cat. 3, 4, 5 UTP/STP
 100BaseTX Cat. 5 UTP/STP
 1000BaseT Cat. 5E UTP/STP
 1000BaseSX:
 62.5/125µm Multi Mode Fiber optic cable, up to 220 m
 50/125µm Multi Mode Fiber optic cable, up to 550 m
 1000BaseLX:
 9/125µm Single Mode Fiber optic cable

Led Indicators

Per Port: Link/Act, 1000M
 Per Unit: Power

Power Supply

DC5V 2A for EU and AU
 DC5V 2.5A for US and UK

Power Consumption

10 Watts (Max)

Dimensions

130 × 77 × 24 mm (L x W x H)

Weight

0.28 kg

Operating Temperature

0°C ~ 40°C

Storage Temperature

-20°C ~ 90°C

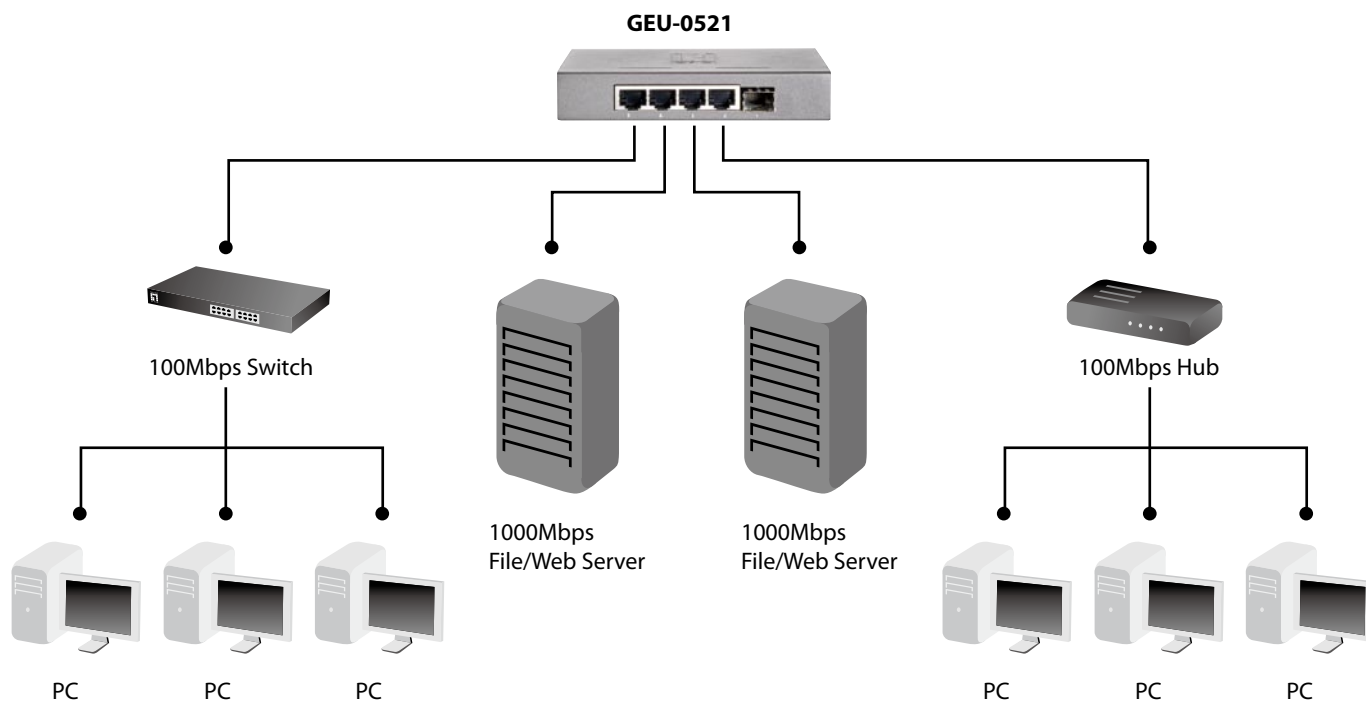
Humidity

10% ~ 90% RH (non-condensing)

Certifications

FCC Class B, CE

Product Diagram



Order Information

Package Contents

GEU-0521: 4 GE + 1 GE SFP Switch

GEU-0521

Rubber pad

Power Adapter

Quick Installation Guide

Optional Accessories



GVT-0300
Mini GBIC SFP transceiver,
SX Multi-Mode (550m)



GVT-0301
Mini GBIC SFP transceiver,
LX Single-Mode (10km)



GVT-0302
Mini GBIC SFP transceiver,
ZX Single-Mode (80km)



SFP-3001
1.25 G transceiver 850nm
VCSEL, SX (MMF 500m),
Duplex LC



SFP-3111
1.25 G transceiver, 1310nm
MLX (MMF 2km), Duplex LC



SFP-3211
1.25 G transceiver , 1310 nm
FP-LD, LX (SMF 10m),
Duplex LC



SFP-3611
1.25 G transceiver , 1550nm
DFB-LD, ZX (SMF 80km),
Duplex LC



SFP-3711
1.25 G transceiver 1550nm
DFB-LD, EZX (SMF 120km),
Duplex LC



SFP-9221
1.25G BIDI, (SM 10km
1310/1550), Simplex LC



SFP-9231
1.25G BIDI, (SM 10km
1550/1310), Simplex LC



SFP-9321
1.25G BIDI, (SM 20km
1310/1550), Simplex LC



SFP-9331
1.25G BIDI, (SM 20km
1550/1310), Simplex LC



SFP-9421
1.25G BIDI, (SM 40km
1310/1550), Simplex LC



SFP-9431
1.25G BIDI, (SM 40km
1550/1310), Simplex LC

All mentioned brand names are registered trademarks and property of their owners. Technical specifications are subject to change without notice.

© Copyright Digital Data Communications GmbH. All Rights Reserved.