

ATLANTIC VERSION TERMINATOR INTERFACE ADAPTER	PART NUMBER	REVISION	DESCRIPTION	FEED TYPE	APPLICATOR STYLE CONVERSION CHART						
					CONVERT TO	PART NUMBERS REQUIRED					
	2150045-1	A	FINE CRIMP HEIGHT ADJUST	MECHANICAL	PNEUMATIC FEED	2119950-1	2119792-2	-	2119641-1	-	2063440-2
					SERVO LATCH PLATE	2119951-1	1901697-1	8-2150045-5	-	-	2168400-7 (QUANTITY 2)
					SMART APPLICATOR	2161326-1	-	8-2150045-4	-	-	-
	2150045-2	A	FINE CRIMP HEIGHT ADJUST	PNEUMATIC	MECHANICAL FEED	2119949-1	2063961-1	5-18022-5	2119653-1	-	-
					SERVO LATCH PLATE	2119951-1	1901697-1	8-2150045-5	-	-	2168400-7 (QUANTITY 2)
					SMART APPLICATOR	2161326-1	-	8-2150045-4	-	-	-
	2150045-5	A	FINE CRIMP HEIGHT ADJUST	SERVO LATCH PLATE <sup>4</sup>	MECHANICAL FEED	2119949-1	2063961-1	5-18022-5	2119653-1	-	-
					PNEUMATIC FEED	2119950-1	2119792-2	-	2119641-1	-	2063440-2
	2150045-6	A	NON-CRIMP HEIGHT ADJUST	SERVO LATCH PLATE <sup>4</sup>	SERVO LATCH PLATE <sup>12</sup>	-	-	-	-	-	-
					-	-	-	-	-	-	-
	2150045-7	A	FINE CRIMP HEIGHT ADJUST	NONE	-	-	-	-	-	-	-
	7-2150045-7	A	CRIMP TOOLING KIT	-	-	-	-	-	-	-	-

APPLICATOR DATA		
CRIMP	SIZE	TYPE
WIRE	2.54 mm [1.00]	F
INSUL	3.05 mm [1.20]	OV
APPL INSTRUCTIONS 408-10390		

TERMINAL DATA: TE TERMINAL		TE CRIMP SPECIFICATION	
TERMINAL NAME: RING TERMINAL			
WIRE STRIP LENGTH		INSULATION DIAMETER RANGE	
5.56-6.00 mm [1.219-.236 IN]		Ø1.40-2.10 mm [1.055-.083 IN]	
TERMINAL APPLICATION SPECIFICATION	114-2084		
TERMINALS APPLIED			
TE TERMINAL	TE TERMINAL	TE TERMINAL	TE TERMINAL
346100-2	346100-3		

WIRE SIZE	CRIMP HEIGHT mm [INCH]	CRIMP HEIGHT REFERENCE SETTING
1.00mm2	1.89 +/- 0.05 [1.074 +/- .002]	9.6
0.75mm2	1.82 +/- 0.05 [1.072 +/- .002]	10.1
0.50mm2	1.75 +/- 0.05 [1.069 +/- .002]	10.7

- <sup>1</sup> RECOMMENDED SPARE PARTS
- <sup>2</sup> GREASE BEARING SURFACES LIGHTLY
- 3. LUBRICATE DAILY PER THE APPLICATOR INSTRUCTION SHEET SUPPLIED WITH THE APPLICATOR.
- <sup>4</sup> APPLICATOR SPECIFIC DATA TO BE ENTERED INTO BLANK MEMORY CHIP AT ASSEMBLY. SEE BELOW FOR PART NUMBER:  
 MECHANICAL FEED WITH "SMART APPLICATOR" CONVERSION: 8-2150045-4  
 PNEUMATIC FEED WITH "SMART APPLICATOR" CONVERSION: 8-2150045-4  
 SERVO FEED WITH "FINE CRIMP HEIGHT ADJUST": 8-2150045-5  
 SERVO FEED WITH "NON-CRIMP HEIGHT ADJUST": 8-2150045-6
- 5. ADJUSTMENT OF THE STRIPPER MAY BE REQUIRED WHEN MOVING THE APPLICATOR BETWEEN BENCH AND LEADMAKER APPLICATIONS.
- <sup>6</sup> APPLY PART NUMBER 1-23419-5 LOCTITE TO THREADS OF ITEM 37, 62 & 242. FOR -6 ONLY APPLY PART NUMBER 1-23419-5 LOCTITE TO THREADS OF ITEMS 37, & 242.
- <sup>7</sup> GREASE THREADS, GROOVE AND O-RING ON ITEMS 35 & 252.
- <sup>8</sup> MAGNET, ITEM 166 MUST BE ORIENTED CORRECTLY IN ORDER TO PROPERLY ACTUATE THE COUNTER.
- <sup>9</sup> CRIMP HEIGHT REFERENCE SETTING WAS THE SETTING USED WHEN THE APPLICATOR WAS QUALIFIED AT THE FACTORY. ADJUSTMENT MAY BE NECESSARY WHEN RUNNING APPLICATOR IN THE FIELD.
- <sup>10</sup> SPARE FEED CAM STORAGE LOCATION REFER TO INSTRUCTION SHEET FOR ADDITIONAL INFORMATION.
- <sup>11</sup> THE RECOMMENDED SET-UP FOR END FEED APPLICATORS IS POST-FEED WITH ITEM 2119653-1. THE APPLICATOR CAN BE CONFIGURED FOR PRE-FEED WITH ITEM 2119652-1 BUT MAY ENCOUNTER PROBLEMS WITH SOME APPLICATIONS. FEED ISSUES OR TERMINAL JAMMING MAY OCCUR IN THE PRE-FEED CONFIGURATION.
- <sup>12</sup> WHEN ASSEMBLING -6 NON-CRIMP HEIGHT ADJUST APPLICATOR USE SHIM PACK 2119957-2 TO ALIGN APPLICATOR'S MAXIMUM WIRE CRIMP HEIGHT AT NORMAL TERMINATOR SHUT HEIGHT

**\*WARNING**  
 ON INSTALLATION, SET WIRE DISC, ITEM 40 TO LARGEST WIRE SIZE SETTING. USE OF SETTINGS BELOW MINIMUM REQUIRED CRIMP HEIGHT SETTING WILL CAUSE DAMAGE TO CRIMP TOOLING.

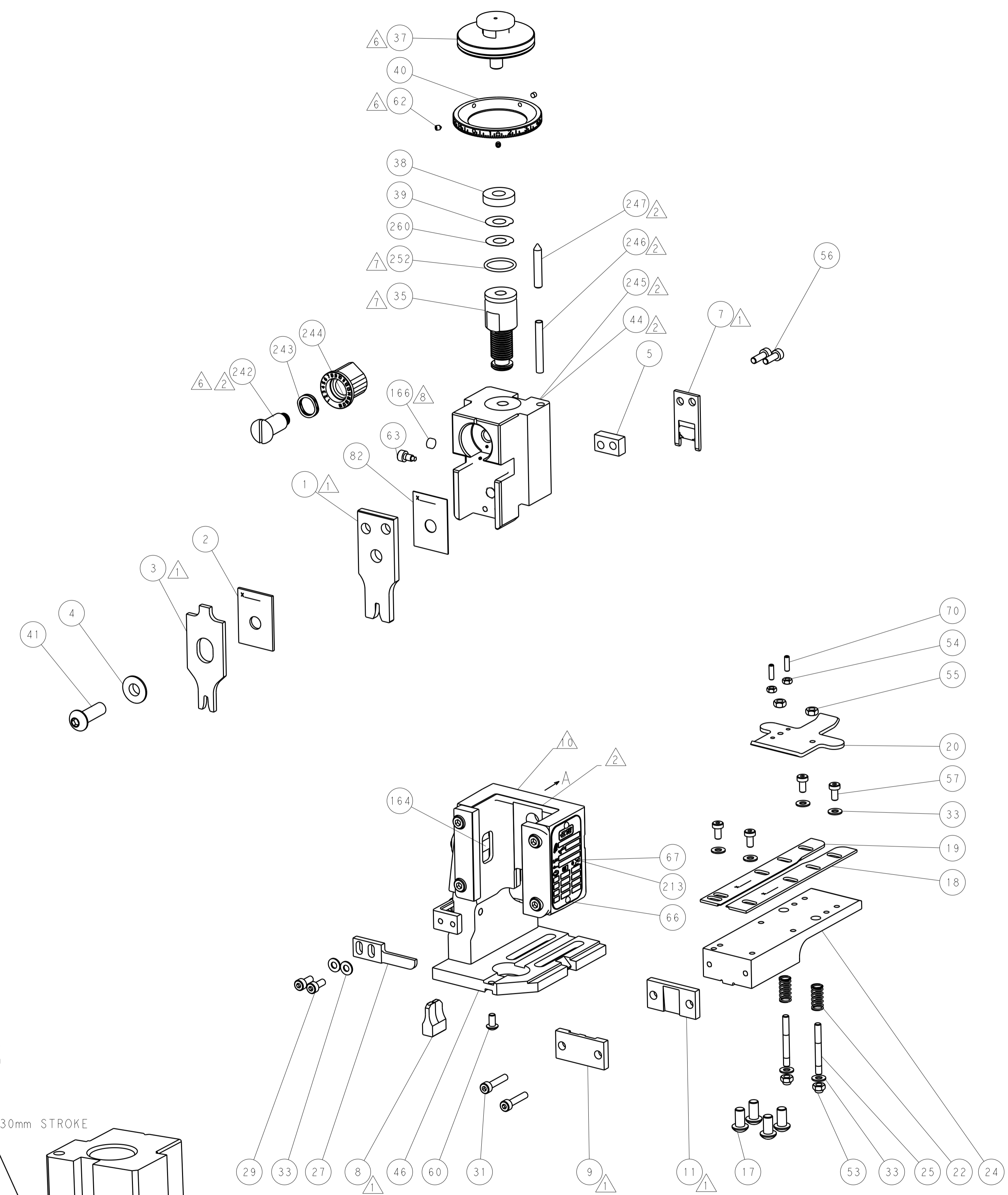
**ATLANTIC VERSION**  
 Shown on sheets 1 of 4 & 2 of 4  
 (Pacific version shown on sheets 3 of 4 & 4 of 4)

REVISIONS			
REV	DATE	BY	APP'D
1	30JUN2012	XZ	SX
2	26APR2013	CC	UG
A	28AUG2013	BH	TE

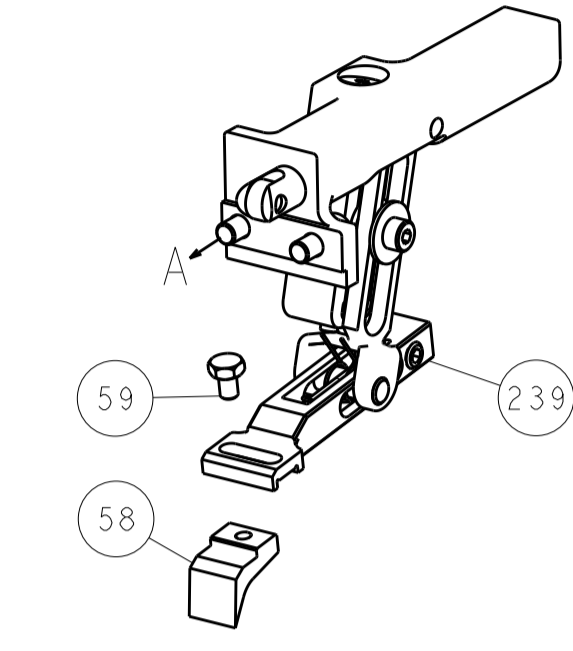
REV	DATE	DESCRIPTION	DATE	BY	APP'D
-	-	1 - - -	2119957-2	APPLICATOR SHIM PACK	260
-	-	1 - 1 1 1	8-21084-0	O-RING, .676 ID, .070 DIA. MAT.	252
-	-	- - - 1 -	2119640-1	PUSH ROD, AIR FEED	250
-	-	- - - 1 -	2079988-1	BUSHING, LCH5-12, MISUMI	249
-	-	- - - 1 -	2119641-1	FEED CAM, AIR FEED	248
-	-	1 - 1 1 1	2119798-1	DETENT PIN	247
-	-	1 - 1 1 1	1-22279-3	SPRING, COMPRESSION	246
-	-	- 1 - - -	2119759-1	RAM, AMP STYLE, END FEED, NON-ADJUST	245
-	-	1 1 1 1 1	2119082-9	CAM, SNAIL, INSULATION ADJUSTMENT	244
-	-	1 1 1 1 1	2079764-1	WASHER, WAVE SPRING, CREST-TO-CREST	243
-	-	1 1 1 1 1	2119083-1	RETAINER, INSULATION DIAL	242
-	-	- 2 2 - -	2168400-7	SHCS, LOW HEAD, RoHS, M5 X 10	240
-	-	- - - - 1	2119580-1	MECHANICAL FEED ASSEMBLY	239
-	-	- - - 1 -	2063440-2	AIR FEED MODULE	238
-	-	- 1 1 - -	2119740-2	TAG, IDENTIFICATION	213
-	-	REFREF - -	1901697-1	FEED FINGER ASSEMBLY, EF	183
-	-	- - - 2 -	21045-3	RING, RETAIN, EXTERN, 3/16 CRESCENT	172
-	-	1 1 1 1 1	994969-1	MAGNET, RARE EARTH HIGH ENERGY	166
-	-	REFREFREFREFREF	994970-2	COUNTER, MAGNETIC	164
-	-	- - - 1 -	240638-1	SPRING, FEED FINGER	163
-	-	- - - 1 -	3-23627-7	PIN, RETAIN, GRVD, 3/16 X .854	137
-	-	REFREF - -	SEE NOTE 4	MEMORY CHIP, PROGRAMMED	135
-	-	1 1 - - -	1633743-1	SERVO FEED LATCH ASM	133
-	-	1 1 1 1 1	455888-4	SPACER, CRIMPER	82
-	-	1 1 1 1 1	2119956-2	DOCUMENTATION PACKAGE	71
-	-	2 2 2 2 2	2-18032-2	SCR, SET, FLT POINT M3 X 10.0	70
-	-	1 - - 1 1	2119740-1	TAG, IDENTIFICATION	67
-	-	2 2 2 2 2	2168078-1	SCREW, DRIVE, RH, RoHS, 2 x .188	66
-	-	1 - - 1 1	2119793-1	LIMITER, ADJUSTMENT BOLT	63
-	-	3 - 3 3 3	992763-5	SCR, SET, SOC, CONE POINT, M3 x 4.0	62
-	-	1 1 1 1 1	2079383-4	SCR, BHSC, RoHS (M4 X 8)	60
-	-	- - - - 1	5-18022-5	SCR, HEX HD CAP, M4 X 6.0	59
-	-	- - - - 1	2063961-1	FEED FINGER	58
-	-	4 4 4 4 4	2168400-4	SHCS, LOW HEAD, RoHS, M4 X 8	57
-	-	2 2 2 2 2	2168083-3	SCR, SKT HD CAP, RoHS, M4 X 12.0	56
-	-	2 2 2 2 2	5018030-2	NUT, HEX, REG, RoHS, M4	55
-	-	2 2 2 2 2	5018030-1	NUT, HEX, REG, RoHS, M3	54
-	-	2 2 2 2 2	986965-8	NUT, LOCK, HEX, TORQUE (M4)	53
-	-	- - - 1 -	2119792-2	PAWL, EF, AIR	51
-	-	- - - 1 2	18023-9	SCR, SKT HD CAP M4 X 6.0	49
-	-	- - - - 1	2119652-1	FEED CAM, PRE FEED	48
-	-	- - - - 1	2119653-1	FEED CAM, POST FEED	47
-	-	1 1 1 1 1	2119655-5	APPLICATOR BASIC ASSEMBLY, EF	46
-	-	1 - 1 1 1 1	2119369-1	RAM, AMP STYLE, END FEED	44
-	-	1 1 1 1 1	2079383-7	SCR, BHSC, RoHS (M8 X 25)	41
-	-	1 - 1 1 1 1	2119645-1	DISC, NUMBERED FA WIRE ADJUSTMENT	40
-	-	1 - 1 1 1 1	2119957-1	APPLICATOR SHIM PACK	39
-	-	1 1 1 1 1	2119644-2	RAM WASHER, PRECISION	38
-	-	1 1 1 1 1	2119085-1	FA HEAD, ATLANTIC STYLE	37
-	-	1 - 1 1 1 1	2119092-1	BOLT, ADJUSTMENT	35
-	-	8 8 8 8 8	1-18028-2	WASHER, FLAT, REG M4	33
-	-	2 2 2 2 2	2168083-9	SCR, SKT HD CAP, RoHS, M4 X 20	31
-	-	2 2 2 2 2	1-2168083-0	SCR, SKT HD CAP, RoHS, M4 X 10	29
-	-	1 1 1 1 1	240639-1	STRIPPER (MACHINING)	27
-	-	2 2 2 2 2	1320906-1	STUD, THREADED	25
-	-	1 1 1 1 1	1752371-5	PLATE, STRIP GUIDE	24
-	-	2 2 2 2 2	2-22281-3	SPRING, COMPRESSION	22
-	-	1 1 1 1 1	1752373-4	DRAG	20
-	-	1 1 1 1 1	1901696-9	STRIP GUIDE, REAR	19
-	-	1 1 1 1 1	1901695-9	STRIP GUIDE, FRONT	18
-	-	4 4 4 4 4	1-2079383-1	SCR, BHSC, RoHS (M6 X 12)	17
-	-	1 1 1 1 1	240644-1	PLATE, REAR SHEAR	11
-	-	- - - - -	-	-	10
-	-	1 1 1 1 1	690482-5	PLATE, FRONT SHEAR	9
-	-	1 1 1 1 1	1803000-4	ANVIL, COMBINATION, END FEED	8
-	-	1 1 1 1 1	2217206-7	BLADE, SLUG	7
-	-	1 1 1 1 1	1-240641-5	SPACER	5
-	-	1 1 1 1 1	238009-1	BLOCK, FL CRIMPER SPACER	4
-	-	1 1 1 1 1	1-2119785-9	CRIMPER, INSULATION OVERLAP PREMIUM	3
-	-	1 1 1 1 1	1-455888-5	SPACER, CRIMPER	2
-	-	1 1 1 1 1	1-456407-0	CRIMPER, WIRE PREMIUM	1

REV	DATE	DESCRIPTION	DATE	BY	APP'D																																				
-77	-7	-6	-5	-2	-1	PART NO	DESCRIPTION	ITEM NO																																	
<table border="1" style="width: 100%;"> <tr> <td colspan="2">DIMENSIONS:</td> <td colspan="2">TOLERANCES UNLESS OTHERWISE SPECIFIED:</td> <td colspan="2">DWG: X. ZHAO 30JUN2012</td> <td colspan="3" rowspan="4">            TE Connectivity            Harrisburg, PA 17105-3608            NAME: Ocean End Feed Applicator            SIZE: A   00779   C=2150045            SCALE: 1:1   SHEET 1 OF 4   REV A         </td> </tr> <tr> <td>mm</td> <td>0 PLC ±0.5</td> <td>1 PLC ±0.13</td> <td>2 PLC ±0.013</td> <td>3 PLC ±0.001</td> <td>4 PLC ±0.0001</td> <td colspan="2">PRODUCT SPEC</td> </tr> <tr> <td></td> <td colspan="5">FINISH:</td> <td colspan="2">APPLICATION SPEC</td> </tr> <tr> <td>MATERIAL:</td> <td colspan="5">FINISH:</td> <td colspan="2">WEIGHT:</td> </tr> </table>									DIMENSIONS:		TOLERANCES UNLESS OTHERWISE SPECIFIED:		DWG: X. ZHAO 30JUN2012		TE Connectivity Harrisburg, PA 17105-3608 NAME: Ocean End Feed Applicator SIZE: A   00779   C=2150045 SCALE: 1:1   SHEET 1 OF 4   REV A			mm	0 PLC ±0.5	1 PLC ±0.13	2 PLC ±0.013	3 PLC ±0.001	4 PLC ±0.0001	PRODUCT SPEC			FINISH:					APPLICATION SPEC		MATERIAL:	FINISH:					WEIGHT:	
DIMENSIONS:		TOLERANCES UNLESS OTHERWISE SPECIFIED:		DWG: X. ZHAO 30JUN2012		TE Connectivity Harrisburg, PA 17105-3608 NAME: Ocean End Feed Applicator SIZE: A   00779   C=2150045 SCALE: 1:1   SHEET 1 OF 4   REV A																																			
mm	0 PLC ±0.5	1 PLC ±0.13	2 PLC ±0.013	3 PLC ±0.001	4 PLC ±0.0001				PRODUCT SPEC																																
	FINISH:								APPLICATION SPEC																																
MATERIAL:	FINISH:								WEIGHT:																																

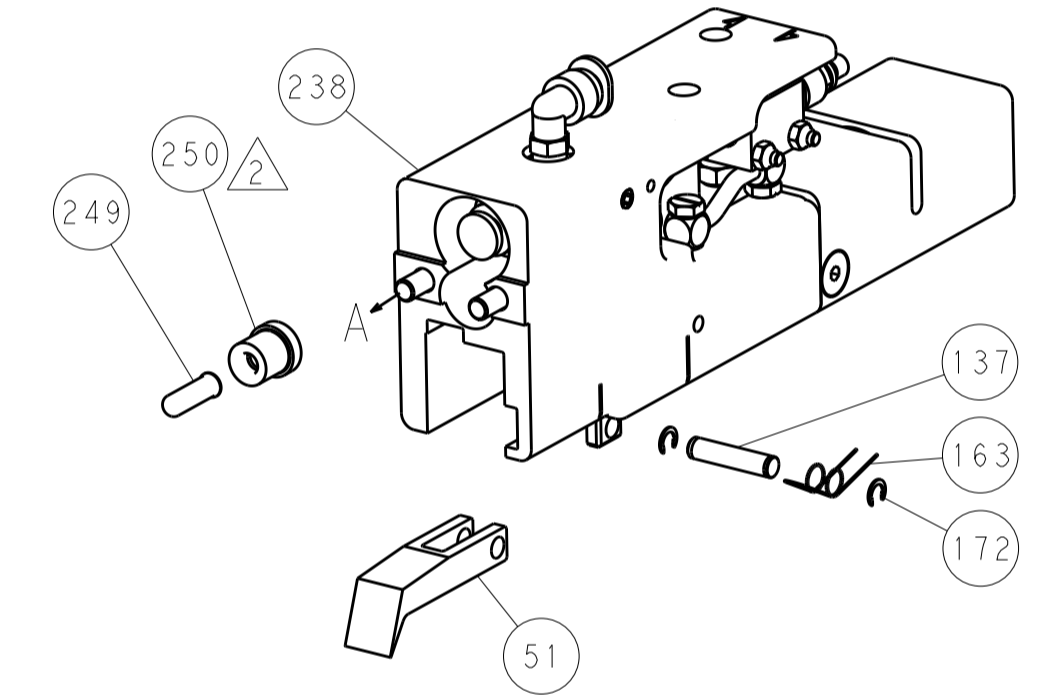
LOC		DIST		REVISIONS			
A	66	P	LTM	DESCRIPTION	DATE	OWN	APVD
		-	-	SEE SHEET 1	-	-	-



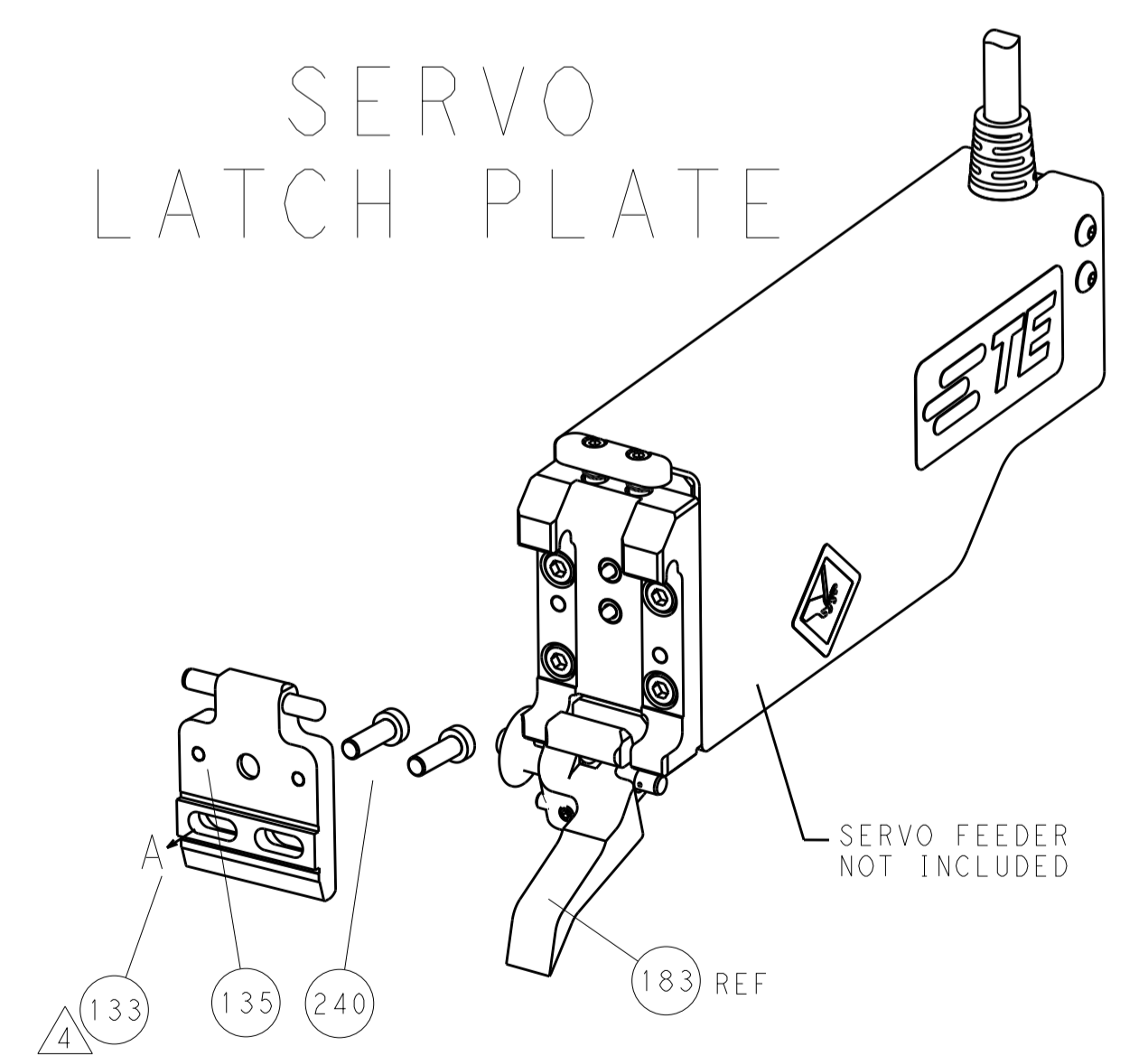
FEED TYPE  
MECHANICAL



PNEUMATIC



SERVO  
LATCH PLATE



CAM POSITIONS



ATLANTIC VERSION  
 Shown on sheets 1 of 4 & 2 of 4  
 (Pacific version shown on sheets 3 of 4 & 4 of 4)

DIMENSIONS:		TOLERANCES UNLESS OTHERWISE SPECIFIED:		DWG: X_ZHAO 30JUN2012		TE Connectivity	
mm		0 PLC ±0.5		CHK: T_ELBIN 30JUN2012		Harrisburg, PA 17105-3608	
Ø		1 PLC ±0.5		APPV: S_XI 30JUN2012		NAME: Ocean End Feed Applicator	
H		2 PLC ±0.13		PRODUCT SPEC		SIZE: CAGE CODE: DRAWING NO: RESTRICTED TO	
D		3 PLC ±0.013		APPLICATION SPEC		A11 00779 ©=2150045	
R		4 PLC ±0.001		WEIGHT		Customer Accessible Production Drawing	
ANGLES		5 PLC ±0.001		SCALE: 1:1		SHEET 2 OF 4 REV A	
FINISH		6 PLC ±0.001		SCALE: 1:1		SHEET 2 OF 4 REV A	

PACIFIC VERSION TERMINATOR INTERFACE ADAPTER	PART NUMBER	REVISION	DESCRIPTION	FEED TYPE	APPLICATOR STYLE CONVERSION CHART						
					CONVERT TO	PART NUMBERS REQUIRED					
	2-2150045-1	A	FINE CRIMP HEIGHT ADJUST	MECHANICAL	PNEUMATIC FEED	2119950-1	2119792-2	-	2119641-2	-	2063440-2
					SERVO LATCH PLATE	2119951-1	1901697-1	8-2150045-5	-	-	2168400-7 (QUANTITY 2)
					SMART APPLICATOR	2161326-1	-	8-2150045-4	-	-	-
	2-2150045-2	A	FINE CRIMP HEIGHT ADJUST	PNEUMATIC	MECHANICAL FEED	2119949-1	2063961-1	5-18022-5	2119653-2	-	-
					SERVO LATCH PLATE	2119951-1	1901697-1	8-2150045-5	-	-	2168400-7 (QUANTITY 2)
					SMART APPLICATOR	2161326-1	-	8-2150045-4	-	-	-
	2-2150045-5	A	FINE CRIMP HEIGHT ADJUST	SERVO LATCH PLATE	MECHANICAL FEED	2119949-1	2063961-1	5-18022-5	2119653-2	-	-
					PNEUMATIC FEED	2119950-1	2119792-2	-	2119641-2	-	2063440-2
	2-2150045-7	A	FINE CRIMP HEIGHT ADJUST	NONE	-	-	-	-	-	-	-
	7-2150045-7	A	CRIMP TOOLING KIT	-	-	-	-	-	-	-	-

APPLICATOR DATA		
CRIMP	SIZE	TYPE
WIRE	2.54 mm [.100]	F
INSUL	3.05 mm [.120]	OV
APPL INSTRUCTIONS 408-10390		

TERMINAL DATA: TE TERMINAL		TE CRIMP SPECIFICATION
TERMINAL NAME: RING TERMINAL		
WIRE STRIP LENGTH		INSULATION DIAMETER RANGE
5.56-6.00 mm [.219-.236 IN]		∅1.40-2.10 mm [.055-.083 IN]
TERMINAL APPLICATION SPECIFICATION	114-2084	
TERMINALS APPLIED		
TE TERMINAL	TE TERMINAL	TE TERMINAL
346100-2	346100-3	

WIRE SIZE	CRIMP HEIGHT mm [INCH]	CRIMP HEIGHT REFERENCE SETTING
1.00mm2	1.89+/-0.05 [.074+/-0.002]	9.6
0.75mm2	1.82+/-0.05 [.072+/-0.002]	10.1
0.50mm2	1.75+/-0.05 [.069+/-0.002]	10.7

- RECOMMENDED SPARE PARTS
- GREASE BEARING SURFACES LIGHTLY
- LUBRICATE DAILY PER THE APPLICATOR INSTRUCTION SHEET SUPPLIED WITH THE APPLICATOR.
- APPLICATOR SPECIFIC DATA TO BE ENTERED INTO BLANK MEMORY CHIP AT ASSEMBLY. SEE BELOW FOR PART NUMBER:  
 MECHANICAL FEED WITH "SMART APPLICATOR" CONVERSION: 8-2150045-4  
 PNEUMATIC FEED WITH "SMART APPLICATOR" CONVERSION: 8-2150045-4  
 SERVO FEED WITH "FINE CRIMP HEIGHT ADJUST": 8-2150045-5
- ADJUSTMENT OF THE STRIPPER MAY BE REQUIRED WHEN MOVING THE APPLICATOR BETWEEN BENCH AND LEADMAKER APPLICATIONS.
- APPLY PART NUMBER 1-23419-5 LOCTITE TO THREADS OF ITEMS 62 & 242.
- GREASE THREADS, GROOVE AND O-RING ON ITEMS 139 & 153.
- MAGNET, ITEM 166 MUST BE ORIENTED CORRECTLY IN ORDER TO PROPERLY ACTUATE THE COUNTER.
- CRIMP HEIGHT REFERENCE SETTING WAS THE SETTING USED WHEN THE APPLICATOR WAS QUALIFIED AT THE FACTORY. ADJUSTMENT MAY BE NECESSARY WHEN RUNNING APPLICATOR IN THE FIELD.
- SPARE FEED CAM STORAGE LOCATION REFER TO INSTRUCTION SHEET FOR ADDITIONAL INFORMATION.
- THE RECOMMENDED SET-UP FOR END FEED APPLICATORS IS POST-FEED WITH ITEM 2119653-1. THE APPLICATOR CAN BE CONFIGURED FOR PRE-FEED WITH ITEM 2119652-1 BUT MAY ENCOUNTER PROBLEMS WITH SOME APPLICATIONS. FEED ISSUES OR TERMINAL JAMMING MAY OCCUR IN THE PRE-FEED CONFIGURATION.

SET UP GAUGE	LOC	DIST	REVISIONS			
2119599-2	A	66	REV	DATE	BY	APPV
			1	SEE SHEET 1		

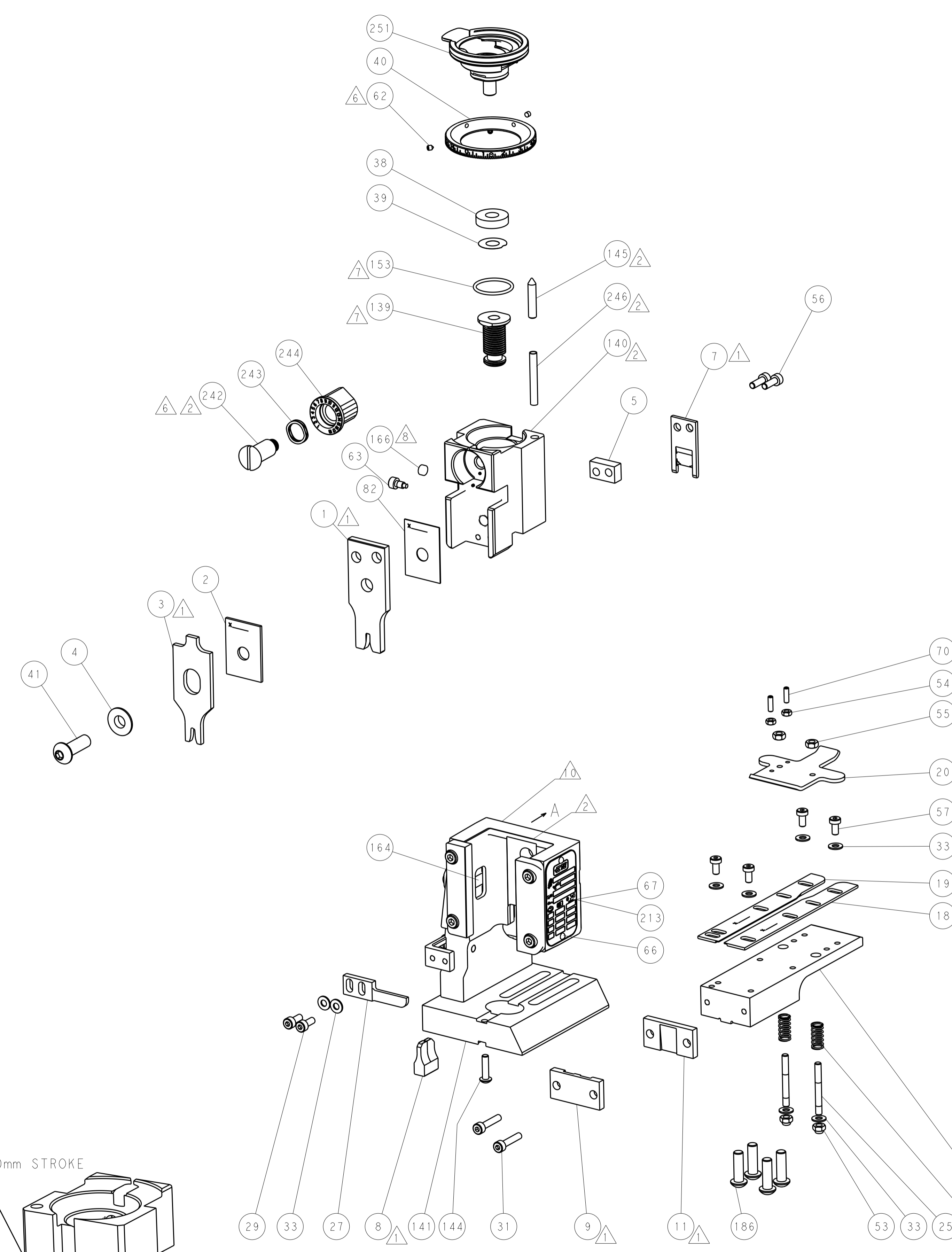
-	1	1	1	1	2119782-1	FINE ADJUST HEAD ASM, PACIFIC STYLE	251	
-	-	-	1	-	2119640-1	PUSH ROD, AIR FEED	250	
-	-	-	1	-	2079988-1	BUSHING, LCH5-12, MISUMI	249	
-	1	1	1	1	1-22279-3	SPRING, COMPRESSION	246	
-	1	1	1	1	2119082-9	CAM, SNAIL, INSULATION ADJUSTMENT	244	
-	1	1	1	1	2079764-1	WASHER, WAVE SPRING, CREST-TO-CREST	243	
-	1	1	1	1	2119083-1	RETAINER, INSULATION DIAL	242	
-	-	2	-	-	2168400-7	SHCS, LOW HEAD, RoHS, M5 X 10	240	
-	-	-	-	1	2119580-1	MECHANICAL FEED ASSEMBLY	239	
-	-	-	1	-	2063440-2	AIR FEED MODULE	238	
-	-	1	-	-	2119740-2	TAG, IDENTIFICATION	213	
-	4	4	4	4	2079383-9	SCR, BHSC, RoHS (M6 X 20)	186	
-	-	REF	-	-	1901697-1	FEED FINGER ASSEMBLY, EF	183	
-	-	-	2	-	21045-3	RING, RETAIN, EXTERN, 3/16 CRESCENT	172	
-	1	1	1	1	994969-1	MAGNET, RARE EARTH HIGH ENERGY	166	
-	REF	REF	REF	REF	994970-2	COUNTER, MAGNETIC	164	
-	-	-	1	-	240638-1	SPRING, FEED FINGER	163	
-	1	1	1	1	8-21084-1	O-RING, .801 ID, .070 DIA. MAT.	153	
-	-	-	1	-	2119641-2	FEED CAM, AIR FEED	152	
-	1	1	1	1	2119798-2	DETENT PIN	145	
-	1	1	1	1	2079383-8	SCR, BHSC, RoHS (M4 X 16)	144	
-	-	-	1	-	2119653-2	FEED CAM, POST FEED	142	
-	1	1	1	1	2119655-6	APPLICATOR BASIC ASSEMBLY, EF	141	
-	1	1	1	1	2119651-1	RAM, ASIAN STYLE, END FEED	140	
-	1	1	1	1	2119092-2	BOLT, ADJUSTMENT	139	
-	-	-	1	-	3-23627-7	PIN, RETAIN, GRVD, 3/16 X .854	137	
-	-	REF	-	-	SEE NOTE 4	MEMORY CHIP, PROGRAMMED	135	
-	-	1	-	-	1633743-1	SERVO FEED LATCH ASM	133	
-	1	1	1	1	455888-4	SPACER, CRIMPER	82	
-	1	1	1	1	2119956-2	DOCUMENTATION PACKAGE	71	
-	2	2	2	2	2-18032-2	SCR, SET, FLT POINT M3 X 10.0	70	
-	1	-	1	1	2119740-1	TAG, IDENTIFICATION	67	
-	2	2	2	2	2168078-1	SCREW, DRIVE, RH, RoHS, 2 x .188	66	
-	1	1	1	1	2119793-1	LIMITER, ADJUSTMENT BOLT	63	
-	3	3	3	3	992763-5	SCR, SET, SOC, CONE POINT, M3 x 4.0	62	
-	-	-	-	1	5-18022-5	SCR, HEX HD CAP, M4 X 6.0	59	
-	-	-	-	1	2063961-1	FEED FINGER	58	
-	4	4	4	4	2168400-4	SHCS, LOW HEAD, RoHS, M4 X 8	57	
-	2	2	2	2	2168083-3	SCR, SKT HD CAP, RoHS, M4 X 12.0	56	
-	2	2	2	2	5018030-2	NUT, HEX, REG, RoHS, M4	55	
-	2	2	2	2	5018030-1	NUT, HEX, REG, RoHS, M3	54	
-	2	2	2	2	986965-8	NUT, LOCK, HEX, TORQUE (M4)	53	
-	-	-	1	-	2119792-2	PAWL, EF, AIR	51	
-	-	-	1	2	18023-9	SCR, SKT HD CAP M4 X 6.0	49	
-	-	-	-	1	2119652-1	FEED CAM, PRE FEED	48	
-	1	1	1	1	2079383-7	SCR, BHSC, RoHS (M8 X 25)	41	
-	1	1	1	1	2119645-1	DISC, NUMBERED FA WIRE ADJUSTMENT	40	
-	1	1	1	1	2119957-1	APPLICATOR SHIM PACK	39	
-	1	1	1	1	2119644-2	RAM WASHER, PRECISION	38	
-	8	8	8	8	1-18028-2	WASHER, FLAT, REG M4	33	
-	2	2	2	2	2168083-9	SCR, SKT HD CAP, RoHS, M4 X 20	31	
-	2	2	2	2	1-2168083-0	SCR, SKT HD CAP, RoHS, M4 X 10	29	
-	1	1	1	1	240639-1	STRIPPER (MACHINING)	27	
-	2	2	2	2	1320906-1	STUD, THREADED	25	
-	1	1	1	1	1752371-5	PLATE, STRIP GUIDE	24	
-	2	2	2	2	2-22281-3	SPRING, COMPRESSION	22	
-	1	1	1	1	1752373-4	DRAG	20	
-	1	1	1	1	1901696-9	STRIP GUIDE, REAR	19	
-	1	1	1	1	1901695-9	STRIP GUIDE, FRONT	18	
-	1	1	1	1	240644-1	PLATE, REAR SHEAR	11	
-	-	-	-	-	-	-	10	
-	1	1	1	1	690482-5	PLATE, FRONT SHEAR	9	
-	1	1	1	1	1803000-4	ANVIL, COMBINATION, END FEED	8	
-	1	1	1	1	2217206-7	BLADE, SLUG	7	
-	1	1	1	1	1-240641-5	SPACER	5	
-	1	1	1	1	238009-1	BLOCK, FL CRIMPER SPACER	4	
-	1	1	1	1	1-2119785-9	CRIMPER, INSULATION OVERLAP PREMIUM	3	
-	1	1	1	1	1-455888-5	SPACER, CRIMPER	2	
-	1	1	1	1	1-456407-0	CRIMPER, WIRE PREMIUM	1	
-	77	27	25	22	21	PART NO	DESCRIPTION	ITEM NO

**\*WARNING**  
 ON INSTALLATION, SET WIRE DISC, ITEM 40 TO LARGEST WIRE SIZE SETTING. USE OF SETTINGS BELOW MINIMUM REQUIRED CRIMP HEIGHT SETTING WILL CAUSE DAMAGE TO CRIMP TOOLING.

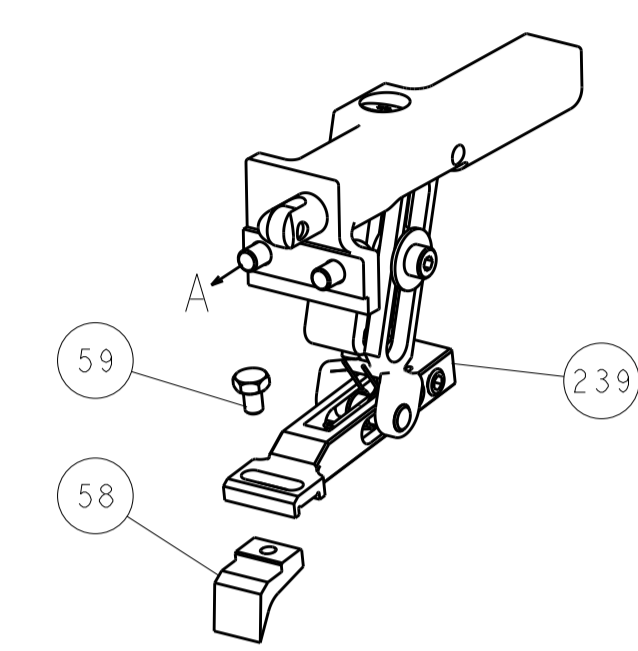
**PACIFIC VERSION**  
 Shown on sheets 3 of 4 & 4 of 4  
 (Atlantic version shown on sheets 1 of 4 & 2 of 4)

DIMENSIONS:		TOLERANCES UNLESS OTHERWISE SPECIFIED:		DRAWN		CHECKED		DATE	
mm	0 PLC ±.5	1 PLC ±0.5	2 PLC ±0.13	3 PLC ±0.013	4 PLC ±0.0001	ANGLES	FINISH	X. ZHAO	30 JUN 2012
								T. ELBRIN	30 JUN 2012
								S. XI	30 JUN 2012
MATERIAL:				PRODUCT SPEC:		APPLICATION SPEC:		NAME	
:				:		:		STE TE Connectivity Harrisburg, PA 17105-3608	
:				WEIGHT:		SCALE:		RESTRICTED TO:	
:				:		A1 00779 ©=2150045		Customer Accessible Production Drawing	

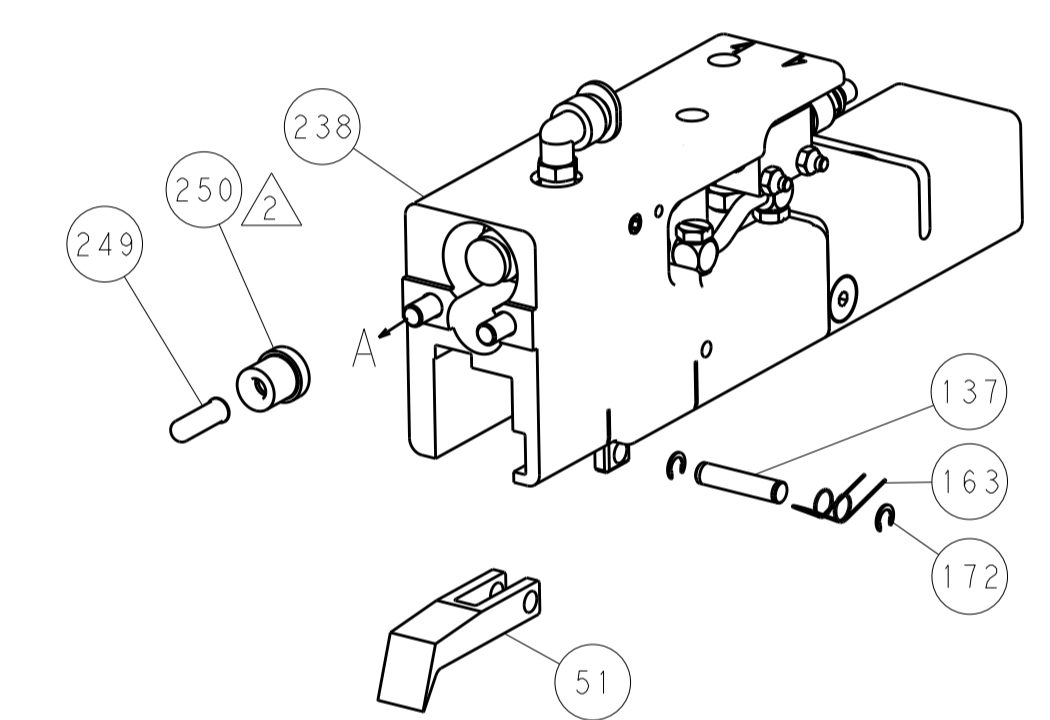
LOC		DIST		REVISIONS			
A	66	P	LTM	DESCRIPTION	DATE	OWN	APVD
		-		SEE SHEET 1			



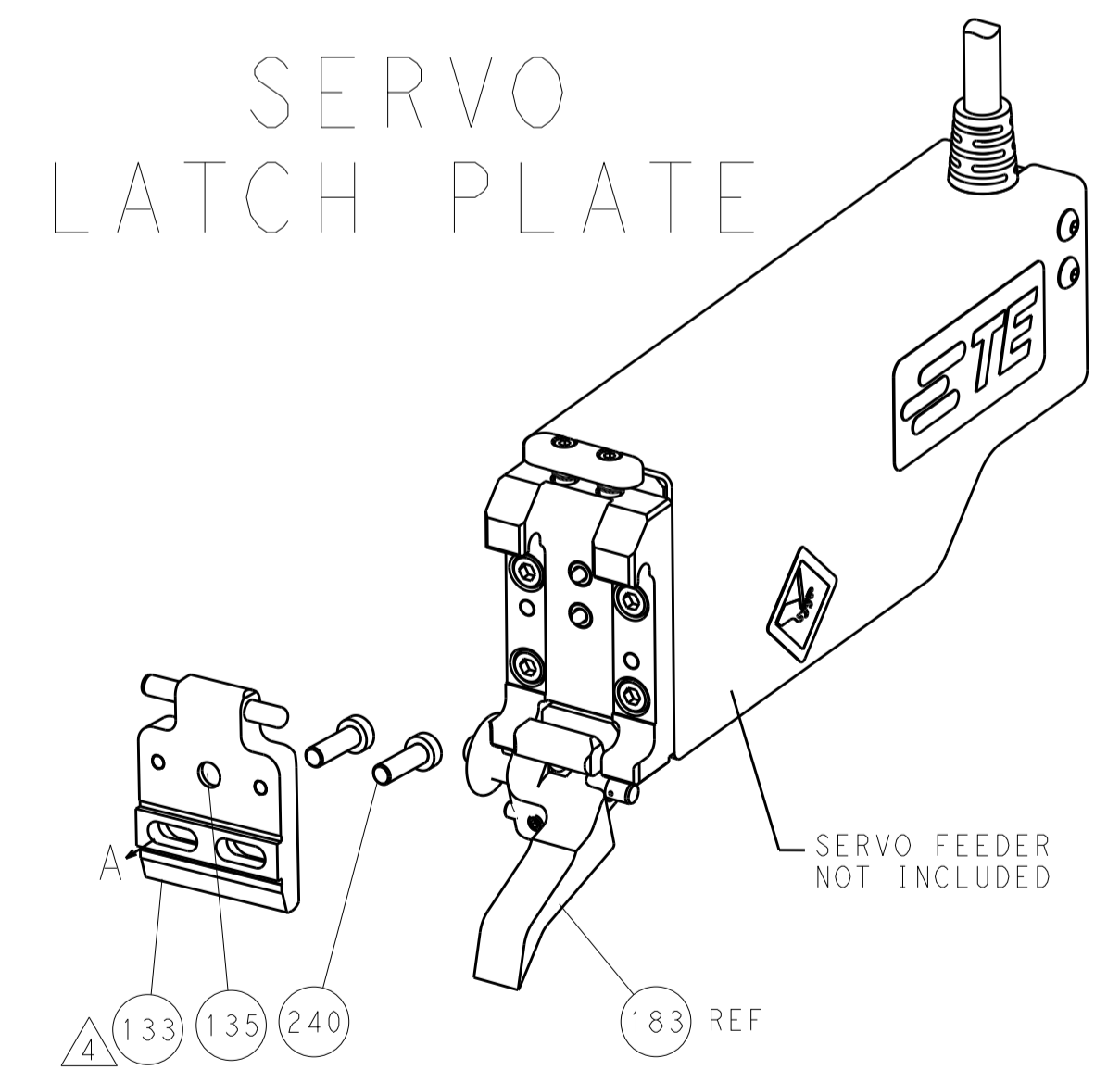
FEED TYPE  
MECHANICAL



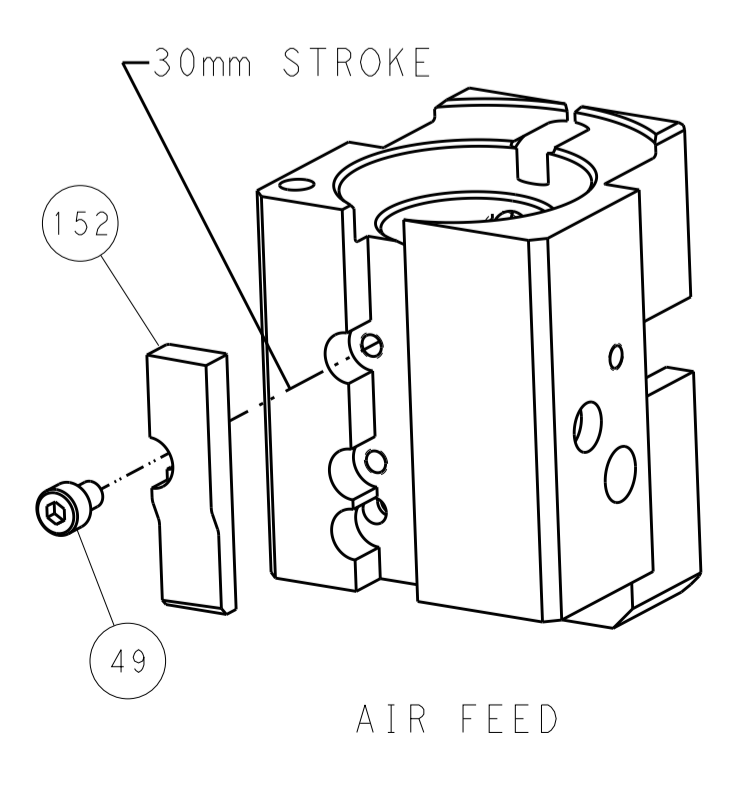
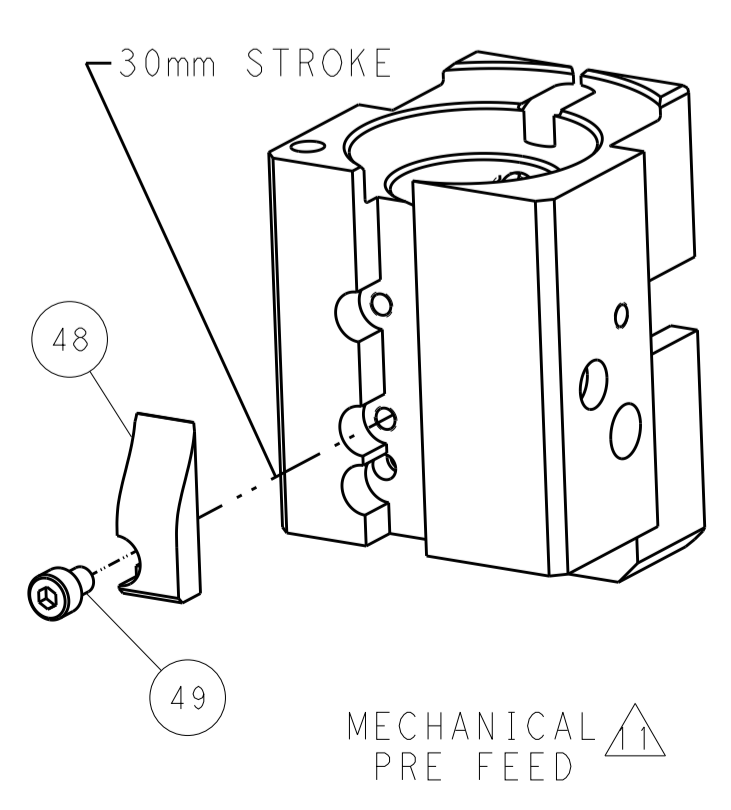
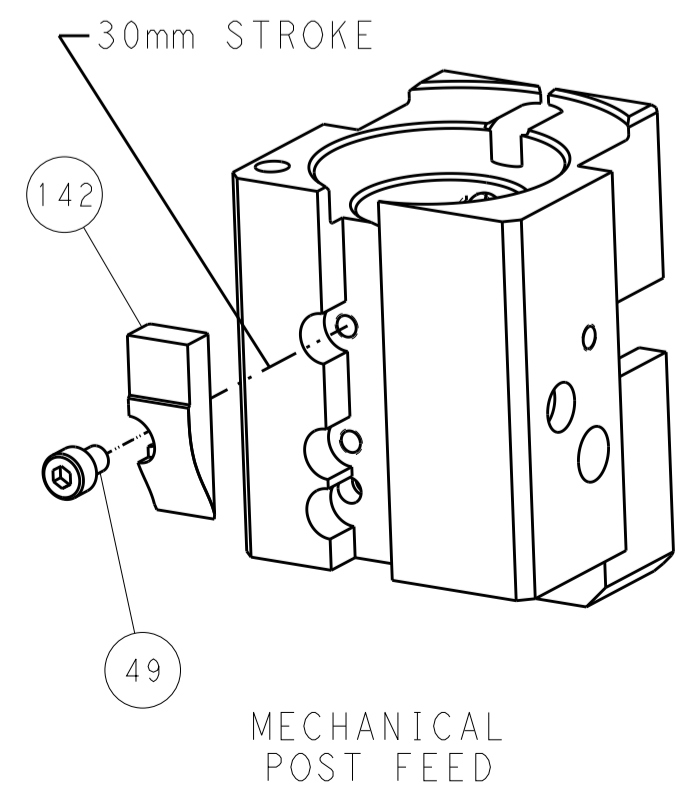
PNEUMATIC



SERVO  
LATCH PLATE



CAM POSITIONS



PACIFIC VERSION  
 Shown on sheets 3 of 4 & 4 of 4  
 (Atlantic version shown on sheets 1 of 4 & 2 of 4)

DIMENSIONS:		TOLERANCES UNLESS OTHERWISE SPECIFIED:		DWN X_ZHAO 30JUN2012		STE TE Connectivity	
mm	0 PLC ±0.5	1 PLC ±0.5	2 PLC ±0.13	3 PLC ±0.13	CHK T_ELFIN 30JUN2012	Harrisburg, PA 17105-3608	
	4 PLC ±0.013	5 PLC ±0.013	6 PLC ±0.001	7 PLC ±0.001	APVD S_XI 30JUN2012	NAME	
MATERIAL:	FINISH:	APPLICATOR SPEC		PRODUCT SPEC		Ocean End Feed Applicator	
		WEIGHT		SCALE		RESTRICTED TO	
		Customer Accessible Production Drawing		1:1		SHEET 4 OF 4 REV A	