

This document is the property of Amphenol Corporation and is delivered on the express condition that it is not to be disclosed, reproduced or used, in whole or in part, for manufacture or sale by anyone other than Amphenol Corporation without its prior consent, & that no right is granted to disclose or to use any information in this document.

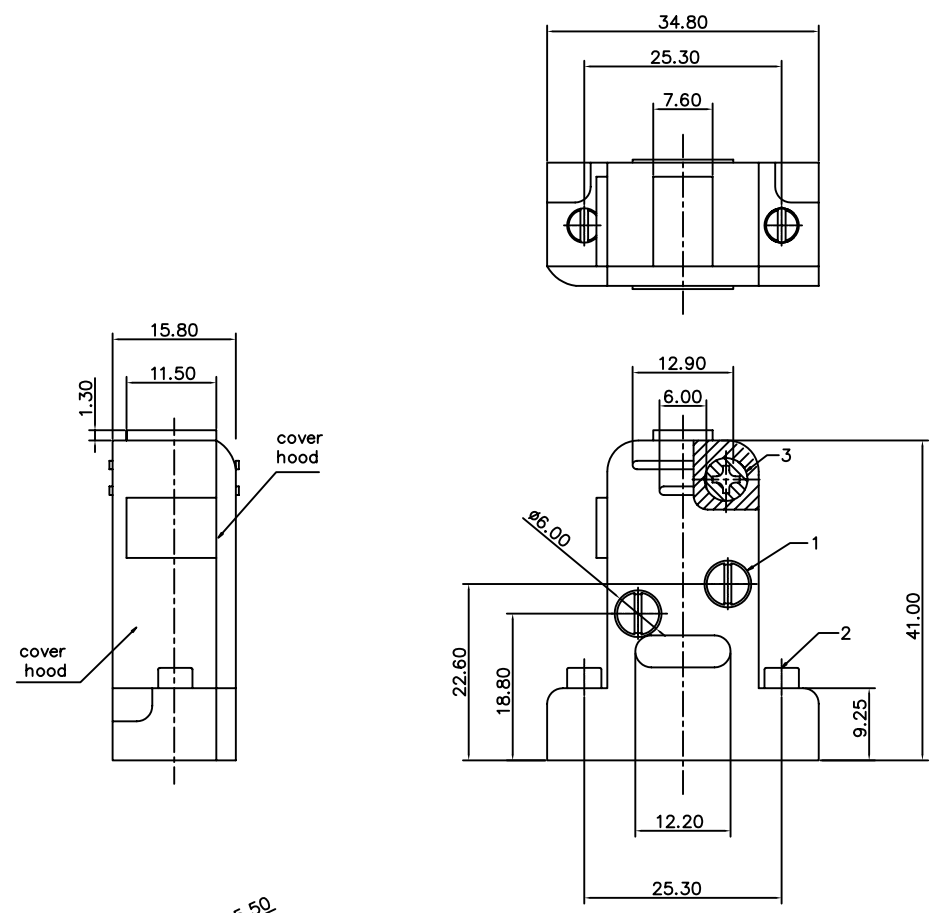
| REVISIONS |     |             |          |          |
|-----------|-----|-------------|----------|----------|
| SYM       | ECN | DESCRIPTION | DATE     | APPROVED |
| A         |     |             | 31/01/07 |          |

**D-SUB TECHNICAL DATA**

Hood, plastic, For 9 positions D-SUB connectors  
 MATERIAL :black thermoplastic  
 CLIMATIC : Temperature range -30 °C up to 90°C  
 MARKING : Amphenol...(Series No.)  
 Commercial reference  
 Manufacturing date

**PRODUCT CODE**

ROHS L 17158706



|  |                     |          |
|--|---------------------|----------|
| UNLESS OTHERWISE SPECIFIED<br>TOLERANCES<br>U.S. METRIC<br>.X +/- 0.50<br>.XX +/- 0.30<br>.XXX +/- 0.20<br>FRACTIONS +/-<br>ANGLES +/- 2°<br>FOR MATERIALS AND FINISHES<br>SEE NOTES<br>REMOVE SHARP EDGES<br>DIMENSIONS<br>U.S. INCHES<br>METRIC MM | APPROVAL            | DATE     |
|  | DRAWN Helen Jiang   | 31/01/07 |
|  | CHECKED Ma.wang     | 31/01/07 |
|  | CHECKED             |          |
|  | DRAWING FILE :      |          |
|  | ANGLE OF PROJECTION |          |
|  |                     |          |

|               |                            |           |
|---------------|----------------------------|-----------|
| Amphenol      |                            |           |
| TITLE<br>hood |                            |           |
| SIZE<br>A4    | DRAWING NO.<br>C L17158706 | REV.<br>A |
| SCALE<br>NONE | SHEET 1 OF 1               |           |