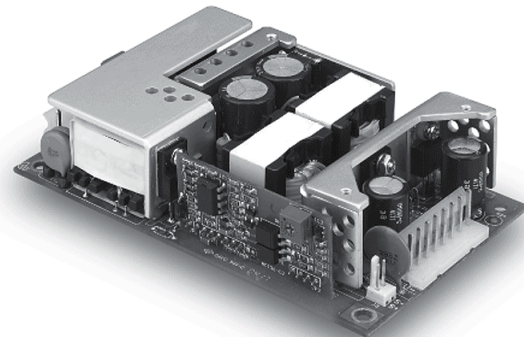


PART NUMBER: VFM100 series

DESCRIPTION: open frame ac-dc power supply

features

- universal input: 90~264VAC
- efficiency at 85% typical
- conductive EMI meets CISPR/FCC, class B/EN61204-3 class B
- power factor correction
- single output



model number	output voltage	max. load	min. load	ripple & noise ¹	voltage accuracy	line regulation ²	load regulation ³
VFM100-S5	5V	20A	0A	2%	±1%	±0.5%	±1%
VFM100-S9	9V	11.2A	0A	1%	±1%	±0.5%	±1%
VFM100-S12	12V	8.4A	0A	1%	±1%	±0.5%	±1%
VFM100-S15	15V	6.7A	0A	1%	±1%	±0.5%	±1%
VFM100-S18	18V	5.6A	0A	1%	±1%	±0.5%	±1%
VFM100-S24	24V	4.2A	0A	1%	±1%	±0.5%	±1%
VFM100-S48	48V	2.1A	0A	1%	±1%	±0.5%	±1%

INPUT

voltage	90-264VAC
frequency	47 to 63Hz
inrush current	50A max. @ 264VAC

OUTPUT

hold up time	20mS typ. @ 115VAC
short circuit protection	continuous
over voltage protection	auto recovery

ENVIRONMENTAL CHARACTERISTICS

operating temperature	0°C-40°C
storage temperature	-20°C-85°C

MECHANICAL OUTLINE

dimensions	5x3x1.34 inches (127x76.2x34 mm)
------------	----------------------------------

GENERAL and SAFETY

isolation voltage (HI-POT)	input to output	4242 V dc for 1 minute
safety approvals	approved to UL 60950 E210311, TUV, CE	
EMI standard	conducted emissions comply with CISPR22, FCC class B	
leakage current	3.5mA max.	
RoHS	yes	

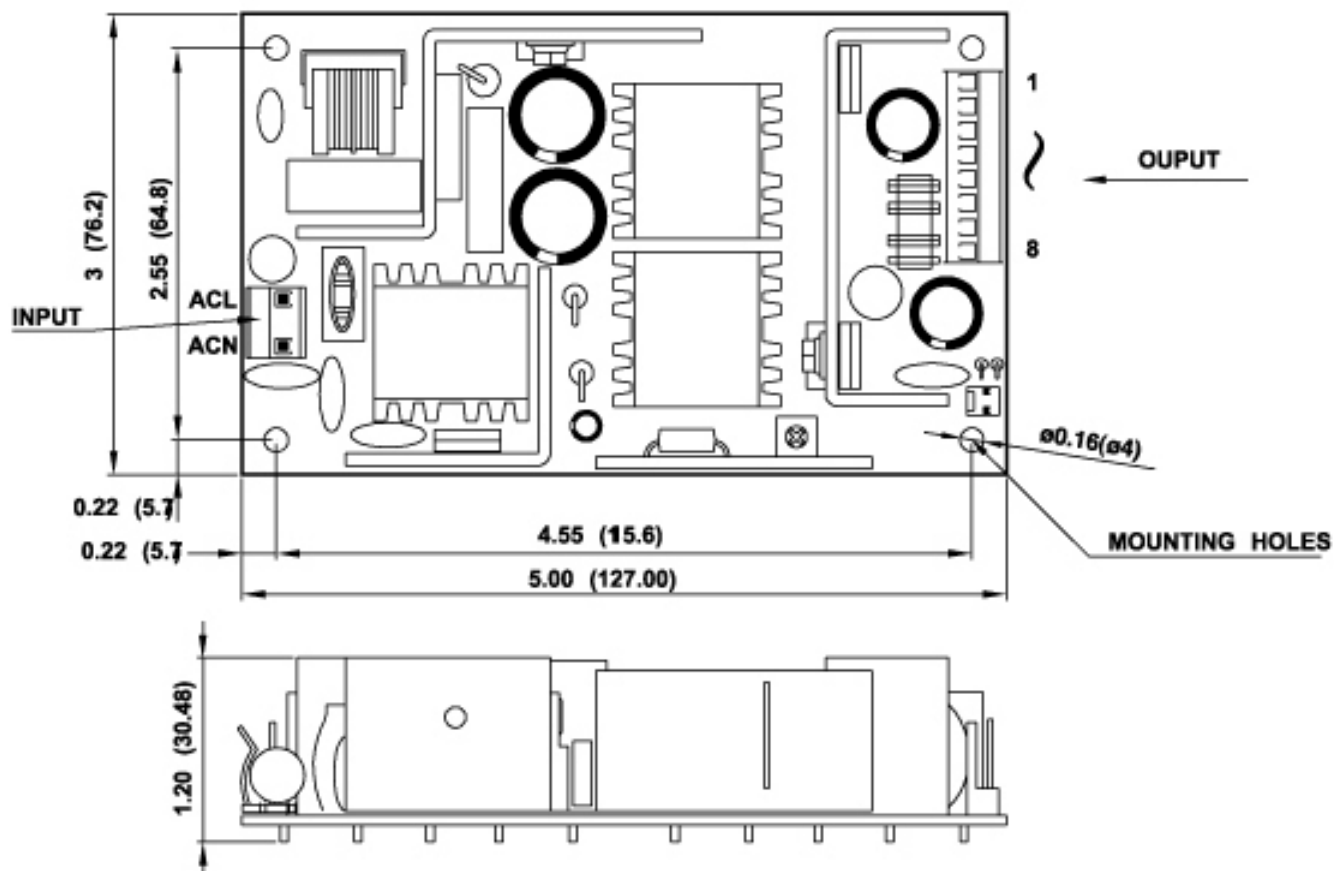
NOTES:

1. add a 0.1µF ceramic capacitor and a 10µF E.L. capacitor to output for ripple and noise measuring @20MHz BW.
2. line regulation is measured from 100VAC to 240VAC with full load.
3. load regulation is measured from 60% to 100% full load and from 60% to 20% full load (60% ±40% full load).

PART NUMBER: VFM100 series

DESCRIPTION: open frame ac-dc power supply

DIMENSIONS (mm)

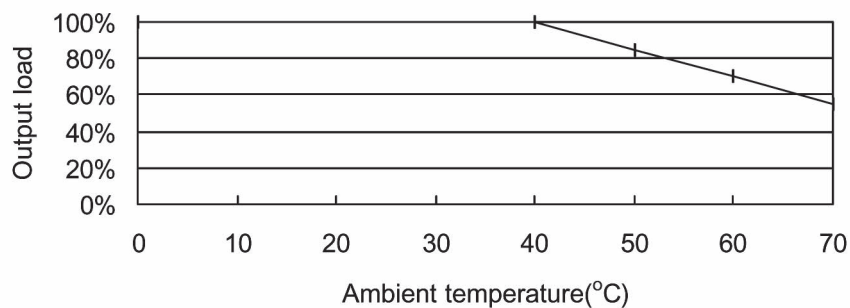


PART NUMBER: VFM100 series

DESCRIPTION: open frame ac-dc power supply

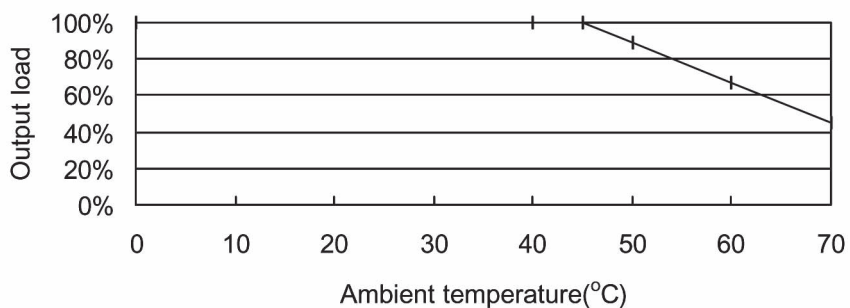
DERATING CURVES

VFM100 series derating curve



Models: VFM100-S9, VFM100-S24, VFM100-S28, VFM100-S48

VFM100 series derating curve



Models: VFM100-S12, VFM100-S15, VFM100-S18

VFM100 series derating curve

