

### 1. PART NO. EXPRESSION :

**SCI1008S-5N6KF**

(a) (b) (c) (d) (e)(f)

(a) Series code

(b) Dimension code

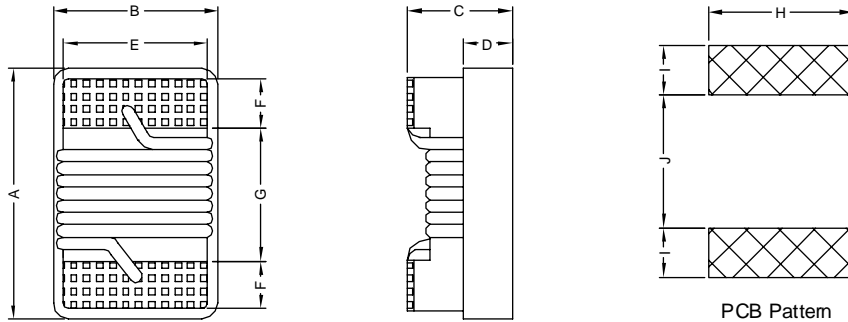
(c) Type code : S ( Standard )

(d) Inductance code : 5N6 = 5.6nH

(e) Tolerance code : G = ±2%, J = ±5%, K = ±10%

(f) F : RoHS Compliant

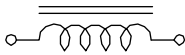
### 2. CONFIGURATION & DIMENSIONS :



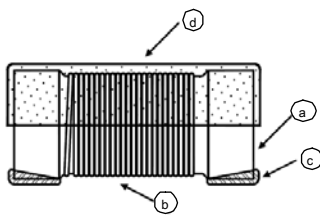
Unit: m/m

| A         | B         | C         | D         | E         | F         | G         | H         | I         | J         |
|-----------|-----------|-----------|-----------|-----------|-----------|-----------|-----------|-----------|-----------|
| 2.92 Max. | 2.79 Max. | 2.13 Max. | 0.65 Ref. | 2.03 Ref. | 0.51 Ref. | 1.52 Ref. | 2.54 Ref. | 1.02 Ref. | 1.27 Ref. |

### 3. SCHEMATIC :



### 4. MATERIALS :



(a) Ceramic Core

(b) Magnet Wire

(c) Electrode (Ag/Pd+Ni+Sn)

(d) UV Glue

### 5. GENERAL SPECIFICATION :

- a) Operating temp. : -40° C to +125° C
- b) Storage condition (component in its packaging)
  - i) Temperature : -10 to 40° C
  - ii) Humidity : 60%



**RoHS Compliant**

NOTE : Specifications subject to change without notice. Please check our website for latest information.

03.02.2015



**SUPERWORLD ELECTRONICS (S) PTE LTD**

## 6. ELECTRICAL CHARACTERISTICS :

| Part No.                 | Tolerance Available | L ( nH ) | Test Freq ( MHz ) | Q Min. | Q Test Freq ( MHz ) | SRF ( MHz ) Min. | DCR ( $\Omega$ ) Max. | IDC ( mA ) Max. |
|--------------------------|---------------------|----------|-------------------|--------|---------------------|------------------|-----------------------|-----------------|
| SCI1008S-5N6 $\square$ F | K, J                | 5.6      | 50                | 50     | 1500                | 4000             | 0.150                 | 1000            |
| SCI1008S-10N $\square$ F | K, J, G             | 10       | 50                | 50     | 500                 | 4100             | 0.080                 | 1000            |
| SCI1008S-12N $\square$ F | K, J, G             | 12       | 50                | 50     | 500                 | 3300             | 0.090                 | 1000            |
| SCI1008S-15N $\square$ F | K, J, G             | 15       | 50                | 50     | 500                 | 2500             | 0.110                 | 1000            |
| SCI1008S-18N $\square$ F | K, J, G             | 18       | 50                | 50     | 350                 | 2400             | 0.120                 | 1000            |
| SCI1008S-22N $\square$ F | K, J, G             | 22       | 50                | 55     | 350                 | 2400             | 0.120                 | 1000            |
| SCI1008S-24N $\square$ F | K, J, G             | 24       | 50                | 55     | 350                 | 1900             | 0.130                 | 1000            |
| SCI1008S-27N $\square$ F | K, J, G             | 27       | 50                | 55     | 350                 | 1600             | 0.130                 | 1000            |
| SCI1008S-33N $\square$ F | K, J, G             | 33       | 50                | 60     | 350                 | 1600             | 0.140                 | 1000            |
| SCI1008S-36N $\square$ F | K, J, G             | 36       | 50                | 60     | 350                 | 1600             | 0.150                 | 1000            |
| SCI1008S-39N $\square$ F | K, J, G             | 39       | 50                | 60     | 350                 | 1500             | 0.150                 | 1000            |
| SCI1008S-47N $\square$ F | K, J, G             | 47       | 50                | 65     | 350                 | 1500             | 0.160                 | 1000            |
| SCI1008S-56N $\square$ F | K, J, G             | 56       | 50                | 65     | 350                 | 1300             | 0.180                 | 1000            |
| SCI1008S-62N $\square$ F | K, J, G             | 62       | 50                | 65     | 350                 | 1250             | 0.200                 | 1000            |
| SCI1008S-68N $\square$ F | K, J, G             | 68       | 50                | 65     | 350                 | 1300             | 0.200                 | 1000            |
| SCI1008S-75N $\square$ F | K, J, G             | 75       | 50                | 60     | 350                 | 1100             | 0.210                 | 1000            |
| SCI1008S-82N $\square$ F | K, J, G             | 82       | 50                | 60     | 350                 | 1000             | 0.220                 | 1000            |
| SCI1008S-91N $\square$ F | K, J, G             | 91       | 50                | 50     | 350                 | 1000             | 0.450                 | 1000            |
| SCI1008S-R10 $\square$ F | K, J, G             | 100      | 25                | 60     | 350                 | 1000             | 0.560                 | 650             |
| SCI1008S-R12 $\square$ F | K, J, G             | 120      | 25                | 60     | 350                 | 950              | 0.630                 | 650             |
| SCI1008S-R15 $\square$ F | K, J, G             | 150      | 25                | 45     | 100                 | 850              | 0.700                 | 800             |
| SCI1008S-R18 $\square$ F | K, J, G             | 180      | 25                | 45     | 100                 | 750              | 0.770                 | 620             |
| SCI1008S-R22 $\square$ F | K, J, G             | 220      | 25                | 45     | 100                 | 700              | 0.840                 | 500             |
| SCI1008S-R24 $\square$ F | K, J, G             | 240      | 25                | 45     | 100                 | 650              | 0.880                 | 500             |
| SCI1008S-R27 $\square$ F | K, J, G             | 270      | 25                | 45     | 100                 | 600              | 0.910                 | 690             |



**RoHS Compliant**

NOTE : Specifications subject to change without notice. Please check our website for latest information.

03.02.2015



**SUPERWORLD ELECTRONICS (S) PTE LTD**

### 6. ELECTRICAL CHARACTERISTICS :

| Part No.       | Tolerance Available | L (nH) | Test Freq (MHz) | Q Min. | Q Test Freq (MHz) | SRF (MHz) Min. | DCR ( $\Omega$ ) Max. | IDC (mA) Max. |
|----------------|---------------------|--------|-----------------|--------|-------------------|----------------|-----------------------|---------------|
| SCI1008S-R30□F | K, J, G             | 300    | 25              | 45     | 100               | 585            | 1.00                  | 450           |
| SCI1008S-R33□F | K, J, G             | 330    | 25              | 45     | 100               | 570            | 1.05                  | 450           |
| SCI1008S-R36□F | K, J, G             | 360    | 25              | 45     | 100               | 530            | 1.10                  | 470           |
| SCI1008S-R39□F | K, J, G             | 390    | 25              | 45     | 100               | 500            | 1.12                  | 630           |
| SCI1008S-R43□F | K, J, G             | 430    | 25              | 45     | 100               | 480            | 1.15                  | 470           |
| SCI1008S-R47□F | K, J, G             | 470    | 25              | 45     | 100               | 450            | 1.19                  | 470           |
| SCI1008S-R56□F | K, J, G             | 560    | 25              | 45     | 100               | 415            | 1.33                  | 580           |
| SCI1008S-R62□F | K, J, G             | 620    | 25              | 45     | 100               | 375            | 1.40                  | 300           |
| SCI1008S-R68□F | K, J, G             | 680    | 25              | 45     | 100               | 375            | 1.47                  | 540           |
| SCI1008S-R75□F | K, J, G             | 750    | 25              | 45     | 100               | 360            | 1.54                  | 360           |
| SCI1008S-R82□F | K, J, G             | 820    | 25              | 45     | 100               | 350            | 1.61                  | 400           |
| SCI1008S-R91□F | K, J, G             | 910    | 25              | 35     | 50                | 320            | 1.68                  | 380           |
| SCI1008S-1R0□F | K, J, G             | 1000   | 25              | 35     | 50                | 290            | 1.75                  | 370           |
| SCI1008S-1R2□F | K, J, G             | 1200   | 7.9             | 35     | 50                | 250            | 2.00                  | 310           |
| SCI1008S-1R5□F | K, J, G             | 1500   | 7.9             | 28     | 50                | 200            | 2.30                  | 330           |
| SCI1008S-1R8□F | K, J, G             | 1800   | 7.9             | 28     | 50                | 160            | 2.60                  | 300           |
| SCI1008S-2R2□F | K, J, G             | 2200   | 7.9             | 28     | 50                | 160            | 2.80                  | 280           |
| SCI1008S-2R7□F | K, J, G             | 2700   | 7.9             | 22     | 25                | 140            | 3.20                  | 290           |
| SCI1008S-3R3□F | K, J, G             | 3300   | 7.9             | 22     | 25                | 110            | 3.40                  | 290           |
| SCI1008S-3R9□F | K, J, G             | 3900   | 7.9             | 18     | 25                | 100            | 3.60                  | 260           |
| SCI1008S-4R7□F | K, J, G             | 4700   | 7.9             | 18     | 25                | 90             | 4.00                  | 260           |
| SCI1008S-5R6□F | K, J, G             | 5600   | 7.9             | 16     | 7.96              | 20             | 4.00                  | 240           |
| SCI1008S-6R8□F | K, J, G             | 6800   | 7.9             | 15     | 7.96              | 40             | 4.90                  | 200           |
| SCI1008S-8R2□F | K, J, G             | 8200   | 7.9             | 15     | 7.96              | 25             | 6.00                  | 170           |
| SCI1008S-100□F | K, J, G             | 10000  | 2.52            | 15     | 7.96              | 20             | 9.00                  | 150           |
| SCI1008S-120□F | K, J, G             | 12000  | 2.52            | 15     | 7.96              | 18             | 10.5                  | 130           |
| SCI1008S-150□F | K, J, G             | 15000  | 2.52            | 15     | 7.96              | 15             | 11.5                  | 120           |

Inductance tolerance :

- : G :  $\pm 2\%$
- J :  $\pm 5\%$
- K :  $\pm 10\%$



**RoHS Compliant**

NOTE : Specifications subject to change without notice. Please check our website for latest information.

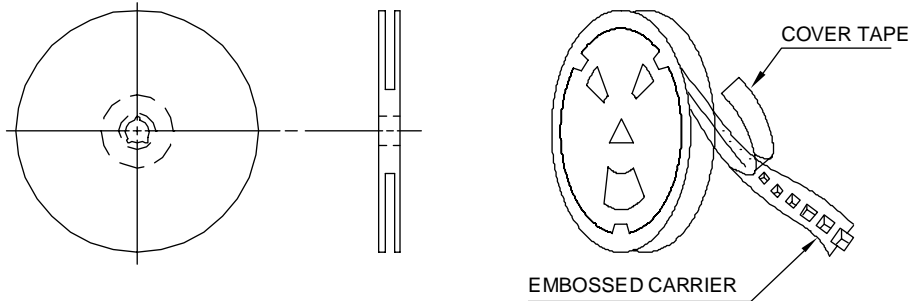
03.02.2015



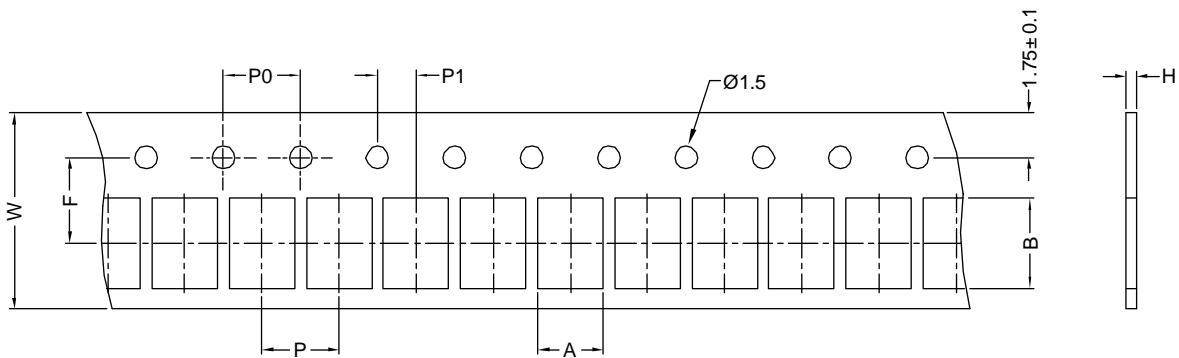
**SUPERWORLD ELECTRONICS (S) PTE LTD**

### 7. PACKAGING INFORMATION :

Reel Configuration :



Paper Tape :



Dimension (unit: mm)

| Series   | A    | B    | H    | F    | P    | P0   | P1   | W    | Qty            |
|----------|------|------|------|------|------|------|------|------|----------------|
| SCI0402S | 0.72 | 1.19 | 0.60 | 3.50 | 2.00 | 4.00 | 2.00 | 8.00 | 4000pcs / reel |
| SCI0603S | 1.35 | 1.95 | 0.95 | 3.50 | 4.00 | 4.00 | 2.00 | 8.00 | 4000pcs / reel |



**RoHS Compliant**

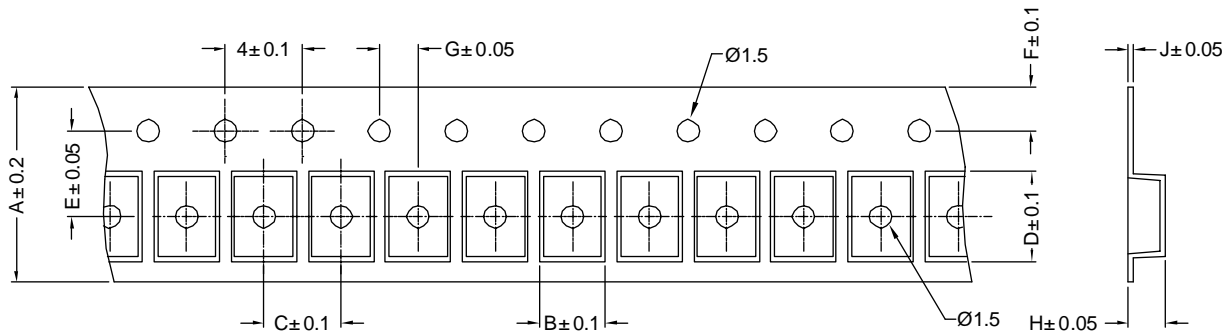
NOTE : Specifications subject to change without notice. Please check our website for latest information.

03.02.2015



**SUPERWORLD ELECTRONICS (S) PTE LTD**

Embossed Carrier Tape :



Dimension (unit: mm)

| Series    | A | B    | C | D    | E   | F    | G | H    | J    | Qty            |
|-----------|---|------|---|------|-----|------|---|------|------|----------------|
| SCI0805S  | 8 | 1.85 | 4 | 2.30 | 3.5 | 1.75 | 2 | 1.45 | 0.23 | 2000pcs / reel |
| SCI0805LP | 8 | 1.80 | 4 | 2.30 | 3.5 | 1.75 | 2 | 0.90 | 0.23 | 2000pcs / reel |
| SCI0805HQ | 8 | 1.85 | 4 | 2.30 | 3.5 | 1.75 | 2 | 1.45 | 0.23 | 2000pcs / reel |
| SCI1008S  | 8 | 2.70 | 4 | 2.80 | 3.5 | 1.75 | 2 | 2.00 | 0.23 | 2000pcs / reel |
| SCI1008LP | 8 | 2.70 | 4 | 2.80 | 3.5 | 1.75 | 2 | 1.50 | 0.23 | 2000pcs / reel |
| SCI1008HQ | 8 | 2.70 | 4 | 2.80 | 3.5 | 1.75 | 2 | 2.00 | 0.23 | 2000pcs / reel |



**RoHS Compliant**

NOTE : Specifications subject to change without notice. Please check our website for latest information.

03.02.2015



**SUPERWORLD ELECTRONICS (S) PTE LTD**