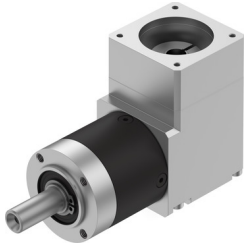


# Gear unit EMGA-40-A-G8-40P

Part number: 8141732

FESTO



## Data sheet

Feature	Value
Gearbox flange size	40 mm
Motor flange size	40 mm
Torsional backlash	0.35 deg
Type code	EMGA
Gearbox type	Angular gear
Gear ratio	8:1
Max. actuator speed	18000 1/min
Gearbox operating temperature	-25 °C ... 90 °C
LABS conformity	VDMA24364-B2-L
Degree of protection	IP54
Continuous output torque	6 Nm
Mass moment of inertia, gearbox	0.032 kgcm <sup>2</sup>
Max. output torque	10 Nm
Max. efficiency	92 %
Torsional rigidity	0.7 Nm/arcmin
Product weight	500 g
Gearbox interface, output shaft	40G
Gearbox interface, actuator	40P
Note on materials	RoHS-compliant