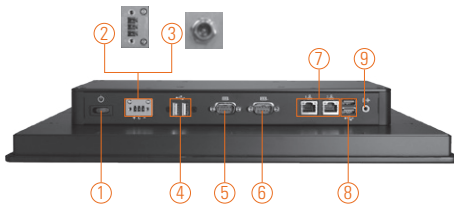
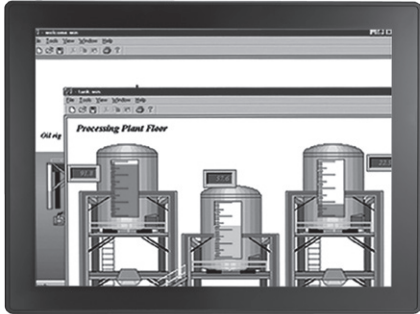


# GOT3177T-834

17" SXGA TFT Flat Front Bezel Touch Panel Computer with Intel® Celeron® Processor J1900 (-10°C ~ +50°C)



- |                                         |                           |                           |
|-----------------------------------------|---------------------------|---------------------------|
| 1. Power switch                         | 5. COM 1 (RS-232/422/485) | 10. CFast™ slot           |
| 2. Terminal block for DC power input or | 6. COM 2 (RS-232/422/485) | 11. Backlight switch      |
| 3. Screw conn. w/ AC power adapter      | 7. Ethernet x 2           | 12. Brightness adjustment |
| 4. USB 2.0 x 2                          | 8. USB 3.0 x 2            |                           |
|                                         | 9. Audio (Line-out)       |                           |



## Introduction

The GOT3177T-834 adopts a 17-inch SXGA LCD and supports Intel® Bay Trail-D processor. By supporting a wide range operating temperature from -10°C to +50°C, it can be used in harsh environment. The rugged industrial panel PC supports low power Intel® Celeron® processor J1900. It also provides two PCIe mini card slots for 3G, wireless network connectivity. The 17" flat front bezel touch panel computer is suitable for transportation, heavy-duty industry, smart factory automation, and oil pipe monitoring systems.

### Wide Temperature Range Support

The Intel® Bay Trail-based GOT3177T-834 applies unique extended temperature technology with wide temperature range support as well as fanless operation. It also has a compact design for harsh environment.

### WLAN Antenna Support (optional)

The 17" SXGA IP65 industrial panel PC, GOT3177T-834, provides two PCIe mini card slots and WLAN/3G antennas for wireless network connectivity.

## Features

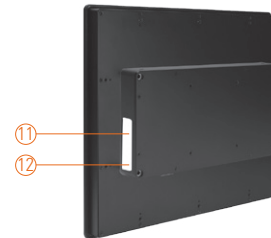
- 17" SXGA TFT flat resistive touch with modulated design
- Fanless design with Intel® Bay Trail-D Celeron® processor J1900 (up to 2.42 GHz)
- Supports 2.5" SATA HDD & CFast™ or mSATA
- Supports WLAN/3G module & antenna (optional)
- Supports 2 Gigabit LAN, 2 USB 2.0, 2 USB 3.0 and 2 COM ports
- IP65 front bezel
- Supports panel mount and optional VESA arm/desktop stand/wall mount
- Supports wide temperature range of -10°C ~ +50°C



▲ Modular design



▲ Rear view



## Specifications

|             |                                 |                                                                          |
|-------------|---------------------------------|--------------------------------------------------------------------------|
| Front Bezel | IP65 front bezel                |                                                                          |
| LCD Panel   | Display Type                    | 17" SXGA TFT LCD                                                         |
|             | Brightness (cd/m <sup>2</sup> ) | 350 nits                                                                 |
|             | Resolution                      | 1280 x 1024                                                              |
| Main System | CPU                             | Intel® Bay Trail-D Celeron® processor J1900 4C @2.0 GHz (up to 2.42 GHz) |
|             | Chipset                         | SoC Intergrated                                                          |
|             | System Memory                   | 1 x 204-pin DDR3L-1333/1600 SO-DIMM up to 8 GB                           |
|             | BIOS                            | AMI UEFI BIOS                                                            |
|             | Storage                         | 1 x 2.5" SATA HDD<br>1 x CFast™ or 1 x mSATA                             |
|             | Watchdog Timer                  | 255 levels, 0 ~ 255 sec.                                                 |
|             | Onboard Graphics                | Integrated Intel® HD Graphics                                            |



## Specifications

|                     |                                                                                                                                                                                                                              |
|---------------------|------------------------------------------------------------------------------------------------------------------------------------------------------------------------------------------------------------------------------|
| I/O Connector       | 2 x RS-232/422/485 (default RS-232)<br>1 x Audio (Line-out)<br>2 x USB 2.0<br>2 x USB 3.0<br>2 x 10/100/1000Mbps Ethernet (Intel® i210IT)                                                                                    |
| Expansion Interface | 1 x PCIe Mini Card slot (with SIM slot, full size)<br>1 x PCIe Mini Card slot (supports mSATA optional, full size)                                                                                                           |
| Touchscreen         | Flat resistive touch                                                                                                                                                                                                         |
| Power Supply        | 1. DC version : 9-36VDC<br>2. AC version : 12VDC w/adapter                                                                                                                                                                   |
| Dimensions          | 398.02 mm (15.64") (W) x 59.9 mm (2.36") (D) x 330.44 mm (13.01") (H)                                                                                                                                                        |
| Packing Dimensions  | 510 mm (20.08") (W) x 190 mm (7.48") (D) x 540 mm (21.26") (H)                                                                                                                                                               |
| Weight (net/gross)  | 4.8 kg (10.6 lb)/7.1 kg (15.67 lb)                                                                                                                                                                                           |
| Environment         | Operating temperature: -10°C ~ +50°C (+14°F ~ +122°F)<br>Storage Temperature: -20°C ~ +60°C (-4°F ~ +140°F)<br>Relative humidity: 20% ~ 90% @ 40°C; non-condensing<br>Operation vibration: 2G, 10 ~ 500Hz, random for CFast™ |
| Certificate         | CE                                                                                                                                                                                                                           |

## Ordering Information

|                    |                                                                                                                                                                                                          |
|--------------------|----------------------------------------------------------------------------------------------------------------------------------------------------------------------------------------------------------|
| GOT3177T-834-FR-DC | 17" SXGA TFT fanless touch panel computer with Intel® Celeron® J1900 2.0 GHz (up to 2.42 GHz) quad core processor, 5-wire flat resistive touch screen and 9-36VDC terminal block connector               |
| GOT3177T-834-FR-J  | 17" SXGA TFT fanless touch panel computer with Intel® Celeron® J1900 2.0 GHz (up to 2.42 GHz) quad core processor, 5-wire flat resistive touch screen and AC-DC 12V power adapter (screw type connector) |

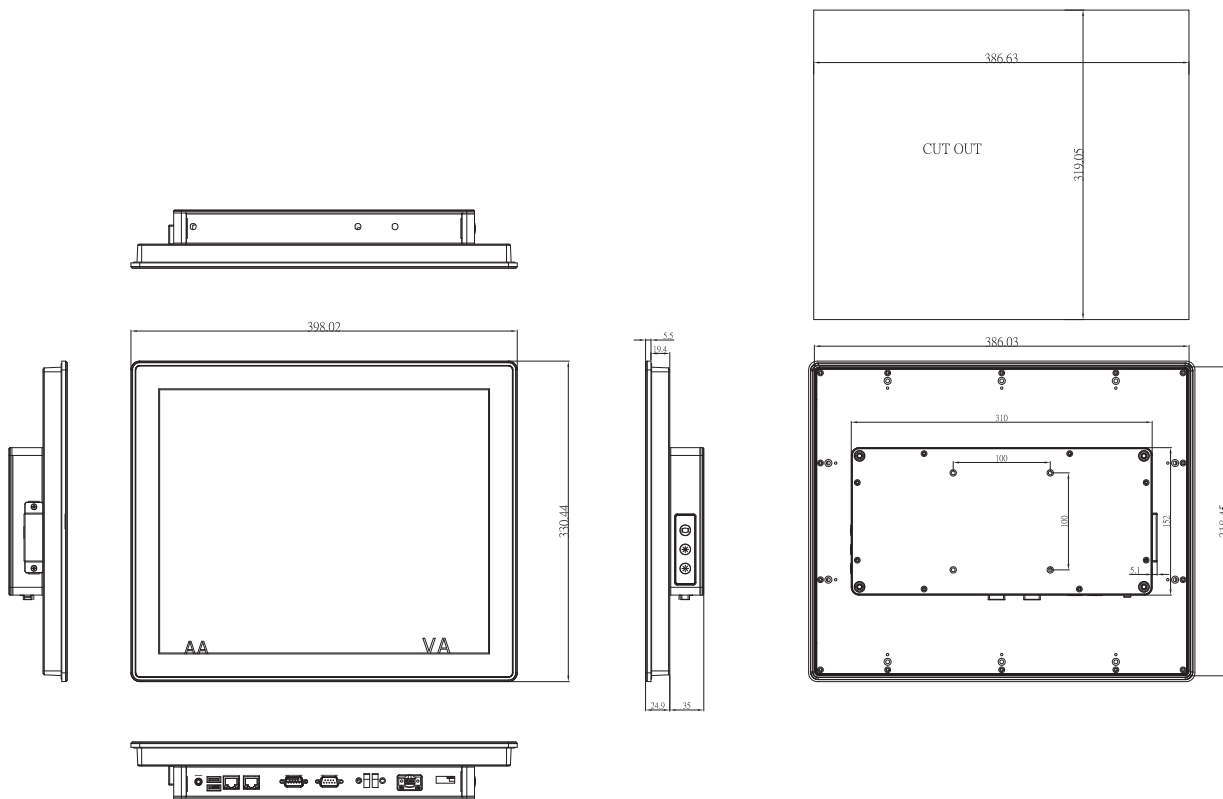
## Optional EOS Installation

WES 7  
WEBS

## Optional OS Installation

Windows® 8.1  
Windows® 7

## Dimensions



Overview

Fanless Touch Panel Computers

2

Heavy-duty Fanless Touch Panel Computers

Industrial Touch Panel Computers

Industrial Touch panel Monitors

Infotainment Touch Panel Computers

Healthcare & Medical Solutions

Open Frame Panel Computers

Accessories

