

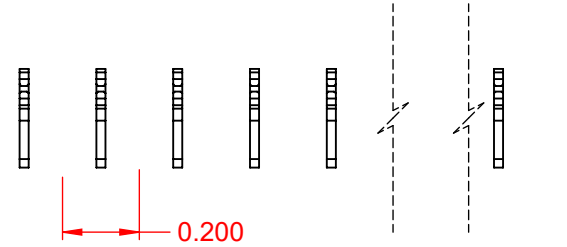
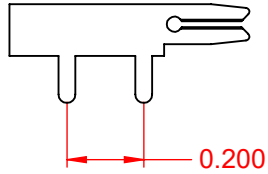
TOLERANCE UNLESS OTHERWISE SPECIFIED	
.X	±0.25
.XX	±0.13
.XXX	±0.05

THIS IS A C.A.D. GENERATED DRAWING  
DO NOT MAKE MANUAL REVISIONS TO MASTER.

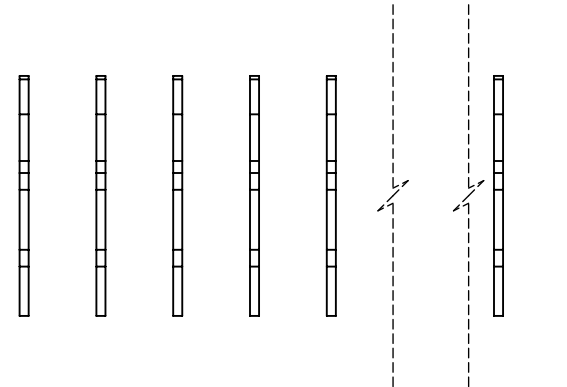


ISSUE NUMBER	
ORIGINAL	①

CONTACT 100-290-202



.200 CONTACT SPACING  
TOTAL NUMBER OF CONTACTS 60



NOTE:  
CONTACTS ARE HELD IN  
A CARRIER FOR EASE OF ASSEMBLY



THIS SERIES FULLY CONFORMS TO  
THE EUROPEAN UNION DIRECTIVES  
2011/65/EU FOR RoHS COMPLIANCY.



YOUR CONNECTION TO QUALITY & SERVICE

EDAC INC  
TORONTO, ONTARIO  
CANADA

THESE DRAWINGS AND SPECIFICATIONS  
ARE THE PROPERTY OF EDAC INC., AND  
SHALL NOT BE REPRODUCED, OR COPIED  
OR USED AS THE BASIS FOR THE  
MANUFACTURE OR SALE OF APPARATUS  
WITHOUT WRITTEN PERMISSION.

105 SERIES - VERTICAL CONTACT PATTERN

ACAD REFERENCE NO.: 105 Assembly	
DRAWN: C.B	DATE: April 8, 2020
CHECKED:	DATE:
SCALE: 2:1	SHEET 1 OF 1
DRAWING NUMBER: 105 Assembly	ISSUE 1
PART NUMBER: 105-060-202-200	