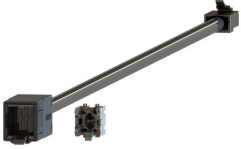


**Part Number:** REVConnect 10GX Flex Plug



REVConnect 10GX Flex Plug, CAT6A, Single Packaging (incl. 1 core), Bonded-Pair, 4 Pair, 23 AWG Solid, T568A/B-T568A/B

**Product Description**

REVConnect 10GX Flex Plug, CAT6A, Single Packaging (incl. 1 core), Bonded-Pair, 4 Pair, 23 AWG Solid, T568A/B-T568A/B

**Technical Specifications**

**Product Overview**

Suitable Applications:	10GX System, TIA Category 6A, ISO Class EA, 10G Base-T
Suitable Applications:	10GX System, TIA Category 6A, ISO Class EA, 10G Base-T

**Physical Characteristics (Overall)**

**Conductor**

AWG	Stranding	Material	No. of Pairs
23	Solid	Bare Copper	4

**Conductor**

AWG	Stranding	Material	No. of Pairs
23	Solid	Bare Copper	4

**Insulation**

Material
PO - Polyolefin

**Insulation**

Material
PO - Polyolefin

**Outer Jacket Material**

Material
PVC - Polyvinyl Chloride

**Outer Jacket Material**

Material
PVC - Polyvinyl Chloride

Overall Nominal Diameter:	0.23 in.
Overall Nominal Diameter:	0.23 in.
Wiring Scheme:	T568A/B-T568A/B
Wiring Scheme:	T568A/B-T568A/B
Packaging:	Individually packaged in a clear plastic bag.
Packaging:	Individually packaged in a clear plastic bag.
Weight:	0.060 lbs
Weight:	0.060 lbs

**Connectors**

**Materials**

Description	Material	Type
Cable End 1, Plug	Polycarbonate	RJ45
Cable End 1, Connection	Phosphor Bronze with 50u inch Gold over Nickel Plating	RJ45 Blades
Cable End 2, Connection	50uin Gold plated contacts	REVConnect

#### Materials

Description	Material	Type
Cable End 1, Plug	Polycarbonate	RJ45
Cable End 1, Connection	Phosphor Bronze with 50u inch Gold over Nickel Plating	RJ45 Blades
Cable End 2, Connection	50uin Gold plated contacts	REVConnect

#### Electrical Characteristics

Dielectric Strength:	1,000 V RMS @ 60 Hz
Dielectric Strength:	1,000 V RMS @ 60 Hz
Current Rating:	1.500 A
Current Rating:	1.500 A
Insulation Resistance:	500 M-Ohm Minimum
Insulation Resistance:	500 M-Ohm Minimum
Max Contact Resistance:	20 mOhm
Max Contact Resistance:	20 mOhm

#### High Freq

Frequency [MHz]	Min. NEXT [dB]	Min. RL (Return Loss) [dB]
1 MHz	65 dB	19.8 dB
4 MHz	65 dB	21.6 dB
8 MHz	65 dB	22.5 dB
10 MHz	65 dB	22.8 dB
16 MHz	63 dB	23.4 dB
20 MHz	61 dB	23.7 dB
25 MHz	59.2 dB	24 dB
31.25 MHz	57.3 dB	23 dB
62.5 MHz	51.3 dB	20 dB
100 MHz	47.3 dB	18 dB
200 MHz	41.4 dB	15 dB
250 MHz	39.5 dB	14 dB
300 MHz	37.2 dB	12.8 dB
400 MHz	33.7 dB	10.9 dB
500 MHz	30.9 dB	9.5 dB
625 MHz	28.3 dB	8 dB

#### High Freq

Frequency [MHz]	Min. NEXT [dB]	Min. RL (Return Loss) [dB]
1 MHz	65 dB	19.8 dB
4 MHz	65 dB	21.6 dB
8 MHz	65 dB	22.5 dB
10 MHz	65 dB	22.8 dB
16 MHz	63 dB	23.4 dB
20 MHz	61 dB	23.7 dB
25 MHz	59.2 dB	24 dB
31.25 MHz	57.3 dB	23 dB
62.5 MHz	51.3 dB	20 dB
100 MHz	47.3 dB	18 dB
200 MHz	41.4 dB	15 dB
250 MHz	39.5 dB	14 dB
300 MHz	37.2 dB	12.8 dB
400 MHz	33.7 dB	10.9 dB
500 MHz	30.9 dB	9.5 dB
625 MHz	28.3 dB	8 dB

#### Temperature Range

Installation Temp Range:	-10°C To +60°C
--------------------------	----------------

Installation Temp Range:	-10°C To +60°C
Storage Temp Range:	-40°C To +70°C
Storage Temp Range:	-40°C To +70°C
Operating Temp Range:	-10°C To +60°C
Operating Temp Range:	-10°C To +60°C

## Mechanical Characteristics

Min Bend Radius (Overall Cable):	1.040 in.
Min Bend Radius (Overall Cable):	1.040 in.
Plug /Jack Compatibility:	RJ45, REVConnect Core
Plug /Jack Compatibility:	RJ45, REVConnect Core

### Termination Interface

Termination	Connection	Durabilities
Cable End 1 - RJ45	Mated Connection	750 Cycles
Cable End 2 - RevConnect	Mated Connection	20 Cycles

### Termination Interface

Termination	Connection	Durabilities
Cable End 1 - RJ45	Mated Connection	750 Cycles
Cable End 2 - RevConnect	Mated Connection	20 Cycles

## Standards

UL Rating:	UL94 V-0, UL1863, UL2043
UL Rating:	UL94 V-0, UL1863, UL2043
Telecommunications Standards:	Category 6A - TIA 568.C.2, ISO/IEC 11801:2002 Ed.2
Telecommunications Standards:	Category 6A - TIA 568.C.2, ISO/IEC 11801:2002 Ed.2
Other Standards:	FCC Part 68, Subpart F, IEC 60603-7
Other Standards:	FCC Part 68, Subpart F, IEC 60603-7

## Applicable Environmental and Other Programs

EU RoHS Compliance Date (yyyy-mm-dd):	2006-07-01
EU RoHS Compliance Date (yyyy-mm-dd):	2006-07-01
MII Order #39 (China RoHS):	EUP 50
MII Order #39 (China RoHS):	EUP 50

## Suitability

Suitability - Indoor:	Yes
Suitability - Indoor:	Yes

## Flammability, LSOH, Toxicity Testing

Safety Listing:	c(UL)us Listed
Safety Listing:	c(UL)us Listed

## Part Number

Related Parts:	REVConnect
Related Parts:	REVConnect

### Variants

Item #	Color
RVAFFPUBK18-S1	Black
RVAFFPUEW18-S1	Electric White

### Variants

Item #	Color
RVAFFPUBK18-S1	Black
RVAFFPUEW18-S1	Electric White

© 2019 Belden, Inc

All Rights Reserved.

Although Belden makes every reasonable effort to ensure their accuracy at the time of this publication, information and specifications described here in are subject to error or omission and to change without notice, and the listing of such information and specifications does not ensure product availability.

Belden provides the information and specifications herein on an "ASIS" basis, with no representations or warranties, whether express, statutory or implied. In no event will Belden be liable for any damages (including consequential, indirect, incidental, special, punitive, or exemplary damages) whatsoever, even if Belden has been advised of the possibility of such damages, whether in an action under contract, negligence or any other theory, arising out of or in connection with the use, or inability to use, the information or specifications described herein.

All sales of Belden products are subject to Belden's standard terms and conditions of sale.

Belden believes this product to be in compliance with all applicable environmental programs as listed in the data sheet. The information provided is correct to the best of Belden's knowledge, information and belief at the date of its publication. This information is designed only as a general guide for the safe handling, storage, and any other operation of the product itself or the one that it becomes a part of. The Product Disclosure is not to be considered a warranty or quality specification. Regulatory information is for guidance purposes only. Product users are responsible for determining the applicability of legislation and regulations based on their individual usage of the product.