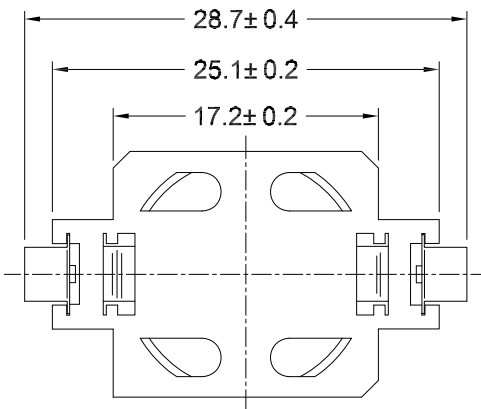


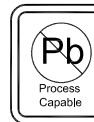
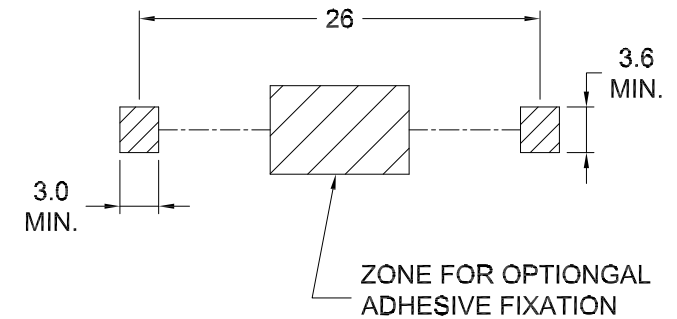
SECTION A-A



NOTES:

- 1、 BASE:
MAT'L: GLASS FILED LCP UL 94V-0
- 2、 CONTACTS:
MAT'L: 0.15mm TH'K PHOSPHOR BRONZE
FINISH: NICKEL PLATE

MOUNTING PAD & HOLE DETAIL



RoHS
Compliant
2002/95/EC



G-Switch Electronic (HongKong) CO.,Ltd.

Unless otherwise specified, Tolerance:
X. ±0.30
X.x ±0.20
X.xx ±0.15
X.xxx ±0.10
Angles ±3°

DESIGN Yu Chen DATE 2022.08.17

CHECKED DATE

APPROVED DATE

<http://www.dg-switch.com>

TEL:0769-82388879

Molde code:

GT-CR1632-1Au

REV.: X1 SCALE: 4:1 UNIT: mm

SIZE: A4 SHEET: 1/1

