



RL-2012

UNSHIELDED SMD POWER INDUCTORS

DESCRIPTION

- Unshielded SMD Power Inductor

ENVIRONMENTAL DATA

- Storage temperature range: -55°C to +130°C
- Operating temperature range: -40°C to +130°C

PACKAGING INFORMATION

- Packaging information: pg. 489

FEATURES & APPLICATIONS

- Low profile great for applications when space is at a minimum
- Low-resistance and high-energy storage
- Excellent as DC-DC converter used in notebook computers, cell phones, step-up or step-down converters, and flash memory

Verify operation with sample in actual circuit. Order samples at www.rencousa.com.

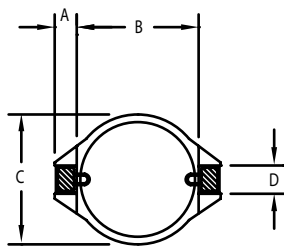
MECHANICAL DIMENSIONS

U.S. Standard (mm)

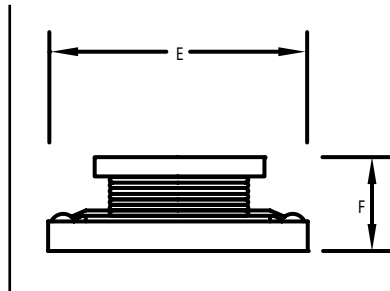
PART NUMBER	A ±0.008 (0.2)	B ±0.012 (0.3)	C (MAX.)	D ±0.008 (0.2)	E (MAX.)
RL-2012	0.08 (2.10)	0.24 (6.00)	0.32 (8.02)	0.08 (2.00)	0.41 (10.52)

PART NUMBER	PART WEIGHT	F (MAX.)	G (REF.)	H (REF.)	I (REF.)
RL-2012	1.0g (0.04oz)	0.20 (5.03)	0.09 (2.20)	0.09 (2.40)	0.22 (5.70)

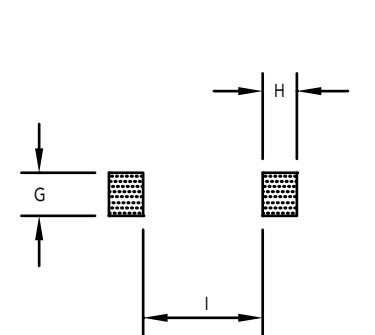
TOP VIEW



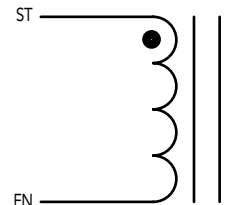
SIDE VIEW



RECOMMENDED LAND PATTERN



SCHEMATIC



RL-2012

Renco Part No. RL-2012	Inductance (μ H)	DCR Max. (Ohms)	Isat (A)	Irms (A)	SRF Typ. (MHz)
RL-2012-3R3M	3.3 \pm 20%	0.030	7.0	3.70	50.0
RL-2012-4R7M	4.7 \pm 20%	0.035	6.0	3.30	40.0
RL-2012-6R8M	6.8 \pm 20%	0.050	5.0	2.70	30.0
RL-2012-100M	10.0 \pm 20%	0.060	4.0	2.30	23.0
RL-2012-150M	15.0 \pm 20%	0.080	3.0	2.10	20.0
RL-2012-220M	22.0 \pm 20%	0.130	2.5	1.60	16.0
RL-2012-330M	33.0 \pm 20%	0.180	2.0	1.30	12.0
RL-2012-470M	47.0 \pm 20%	0.260	1.8	1.10	11.0
RL-2012-680M	68.0 \pm 20%	0.350	1.5	1.00	9.0
RL-2012-101M	100.0 \pm 20%	0.580	1.0	0.70	7.0
RL-2012-151M	150.0 \pm 20%	0.750	0.9	0.60	5.0
RL-2012-221M	220.0 \pm 20%	1.050	0.8	0.50	4.0
RL-2012-331M	330.0 \pm 20%	1.600	0.6	0.45	3.5

NOTES:

1. INDUCTANCE TESTED AT 100 kHz, 0.1 Vrms
2. ELECTRICAL SPECIFICATIONS MEASURED AT 25°C
3. Isat - DC CURRENT THAT WILL CAUSE INDUCTANCE TO DROP BY 10%
4. Irms - CURRENT THAT CAUSES THE TEMPERATURE TO RISE APPROX. 40°C ABOVE AMBIENT OF 25°C



RENCO ELECTRONICS INC.

595 International Place, Rockledge, FL 32955-4200 USA • www.rencousa.com • ISO 9001 Certified
Toll Free Engineering Hot Line: 800.645.5828 • P: 321.637.1000 • F: 321.637.1600

