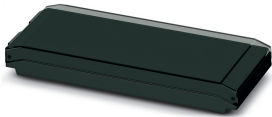


## Upper part of housing - ICS50-TL122X12-9005 - 1076870

Please be informed that the data shown in this PDF Document is generated from our Online Catalog. Please find the complete data in the user's documentation. Our General Terms of Use for Downloads are valid (<http://phoenixcontact.com/download>)

DIN rail housing, Upper part, with transparent hinged cover, width: 50 mm, height: 122 mm, depth: 12 mm, color: black (9005)



### Your advantages

- ✓ Flexible use, thanks to the modular system and unique modularity in the connection technology
- ✓ Standardized connections such as RJ45, USB, D-SUB and antenna sockets as components that can be integrated
- ✓ Optimal space utilization, as well as adaptability of design, colors, and printing
- ✓ Eight-position DIN rail connectors with parallel and up to two serial contacts for easy module-to-module communication



### Key Commercial Data

Packing unit	1 pc
Minimum order quantity	10 pc
GTIN	 4 0 5 5 6 2 6 7 8 5 0 9 7
GTIN	4055626785097
Custom tariff number	85389099
Country of origin	Germany

### Technical data

#### Item properties

Brief article description	Upper part of housing
Type	ICS50-TL122X12-9005
Order No.	1076870
Housing type	DIN rail housing
Housing series	ICS

## Upper part of housing - ICS50-TL122X12-9005 - 1076870

### Technical data

#### Item properties

Range of articles	ICS50
Type	Upper part, with transparent hinged cover
Max. IP code to attain	IP20
Mounting type	Snap in
Ventilation openings present	no

#### Dimensions

Caption	Schematic representation - for further information, see product drawing in the Download Center
Width [ w ]	50 mm
Height [ h ]	122 mm
Depth [ d ]	12 mm

#### Material data

Housing material	Polyamide
Surface characteristics	untreated
Color (RAL)	black (9005)
Flammability rating according to UL 94	V0

#### Ambient conditions

Ambient temperature (storage/transport)	-40 °C ... 55 °C
Ambient temperature (assembly)	-5 °C ... 100 °C
Ambient temperature (operation)	-40 °C ... 105 °C (depending on power dissipation)
Relative humidity (storage/transport)	80 %

#### Mechanical strength/tumbling barrel

Height of fall	50 cm
Number of drop cycles	50

#### Thermostability (Ball Thrust Test)

Specification	IEC 60695-10-2:2014-02
Temperature	125 °C
Test duration	1 h
Force	20

#### Test for assessing the risk of fire (glow wire)

Specification	IEC 60695-2-11:2014-02
Temperature	850 °C
Time of exposure	30 s

#### General information

Type of note	Assembly instruction:
--------------	-----------------------

## Upper part of housing - ICS50-TL122X12-9005 - 1076870

### Technical data

#### General information

Note	Refer to the data sheet for the range in the download area.
------	---

#### Packaging information

Type of packaging	packed in cardboard
Pieces per package	10
Denomination packing units	Pcs.
Outer packaging type	Carton

#### Standards and regulations

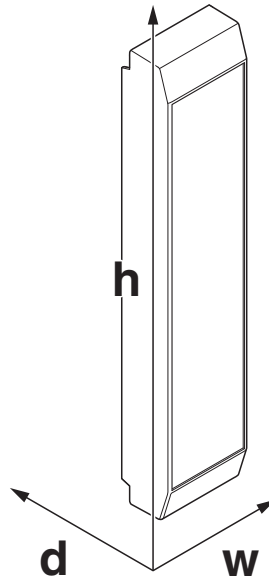
Flammability rating according to UL 94	V0
--	----

#### Environmental Product Compliance

China RoHS	Environmentally friendly use period: unlimited = EFUP-e
	No hazardous substances above threshold values

### Drawings

Dimensional drawing



Schematic representation - for further information, see product drawing in the Download Center

## Upper part of housing - ICS50-TL122X12-9005 - 1076870

### Classifications

eCl@ss

eCl@ss 10.0.1	27182702
eCl@ss 11.0	27182702
eCl@ss 5.1	27180505
eCl@ss 6.0	27180800
eCl@ss 7.0	27182702
eCl@ss 9.0	27182702

ETIM

ETIM 6.0	EC001031
ETIM 7.0	EC001031

### Accessories

#### Accessories

#### Component housing lower part

#### Mounting base housing - ICS50-B122X98-V-V-9005 - 1076880



DIN rail housing, Lower housing part with metal foot catch, Level 1: with vents, width: 50.1 mm, height: 122.5 mm, depth: 108.35 mm, color: black (9005), cross connection: DIN rail connector (optional), number of positions cross connector: 8

#### Mounting base housing - ICS50-B122X98-O-O-9005 - 1118643



DIN rail housing, Lower housing part with metal foot catch, width: 50.1 mm, height: 122.5 mm, depth: 108.35 mm, color: black (9005), cross connection: DIN rail connector (optional), number of positions cross connector: 8

#### Connection plate

#### Connection plate - ICS25-F22S-7035 - 2203890



DIN rail housing, ICS filler, closed, width: 25 mm, height: 7 mm, depth: 22.5 mm, color: light gray (7035)

## Upper part of housing - ICS50-TL122X12-9005 - 1076870

### Accessories

Connection plate - ICS25-F45S-7035 - 2203891

DIN rail housing, ICS filler, closed, width: 25 mm, height: 7 mm, depth: 45 mm, color: light gray (7035)



Connection plate - ICS25-F22V-7035 - 1079495

DIN rail housing, ICS filler, with vents, width: 25 mm, height: 7 mm, depth: 22.5 mm, color: light gray (7035)



Connection plate - ICS25-F45V-7035 - 1079492

DIN rail housing, ICS filler, with vents, width: 25 mm, height: 7 mm, depth: 45 mm, color: light gray (7035)



Connection plate - ICS25-F22J-7035 - 2203895

DIN rail housing, ICS filler, with RJ45 function cutout, width: 25 mm, height: 7 mm, depth: 22.5 mm, color: light gray (7035)



Connection plate - ICS25-F22U-7035 - 1053046

DIN rail housing, ICS filler, with USB function cutout, width: 25 mm, height: 7 mm, depth: 22.5 mm, color: light gray (7035)



## Upper part of housing - ICS50-TL122X12-9005 - 1076870

### Accessories

#### Connection plate - ICS25-F22A-7035 - 2203894



DIN rail housing, ICS filler, with antenna function cutout, width: 25 mm, height: 7 mm, depth: 22.5 mm, color: light gray (7035)

---

#### Connection plate - ICS25-F45D15-7035 - 2203896



DIN rail housing, ICS filler, with D-SUB 15 function cutout, width: 25 mm, height: 7 mm, depth: 45 mm, color: light gray (7035)

---

### DIN rail connector

#### DIN rail bus connectors - TBUS8-25,0-PPPPPPPP-7035 - 2202891



DIN rail connector, color: light gray, nominal current: 6 A (parallel contacts), rated voltage (III/2): 32 V, Number of positions per row: 8, pitch: 2.54 mm, mounting: DIN rail mounting, Locking: without, Assembly: without, type of packaging: packed in cardboard, Item with gold-plated contacts, bus connectors for connecting with electronics housings, 8 parallel contacts

---

#### DIN rail bus connectors - TBUS8-25,0-PPPPPPPS-7035 - 2202890



DIN rail connector, color: light gray, nominal current: 6 A, 4 A (parallel contacts) (Serial contacts), rated voltage (III/2): 32 V, Number of positions per row: 8, pitch: 2.54 mm, mounting: DIN rail mounting, Locking: without, Assembly: without, type of packaging: packed in cardboard, Item with gold-plated contacts, bus connectors for connecting with electronics housings, 7 parallel contacts/1 serial contact

---

#### DIN rail bus connectors - TBUS8-25,0-PPPPPPSS-7035 - 2202895



DIN rail connector, color: light gray, nominal current: 6 A, 4 A (parallel contacts) (Serial contacts), rated voltage (III/2): 32 V, Number of positions per row: 8, pitch: 2.54 mm, mounting: DIN rail mounting, Locking: without, Assembly: without, type of packaging: packed in cardboard, Item with gold-plated contacts, bus connectors for connecting with electronics housings, 6 parallel contacts/2 serial contacts

## Upper part of housing - ICS50-TL122X12-9005 - 1076870

### Accessories

#### PCB header

Feed-through header - ICC25-H/4L5,0-7035 - 2203902



Feed-through header - ICC25-H/4R5,0-7035 - 2203903



#### PCB plug

Printed-circuit board connector - PSPT 2,5/ 4-ST KMGY - 2202344



PCB connector, nominal cross section: 2.5 mm<sup>2</sup>, color: light gray, nominal current: 16 A, rated voltage (III/2): 300 V, contact surface: Tin, type of contact: Female connector, Number of potentials: 4, Number of rows: 1, Number of positions per row: 4, number of connections: 4, product range: PSPT 2,5/..-ST, pitch: 5 mm, connection method: Push-in spring connection, conductor/PCB connection direction: 0 °, Locking clip: - Locking clip, Locking: without, Assembly: without, type of packaging: packed in cardboard, Color of the spring lever: orange

Printed-circuit board connector - MSTBT 2,5 HC/ 4-STP GY7035 - 2200332



PCB connector, nominal cross section: 2.5 mm<sup>2</sup>, color: light gray, nominal current: 16 A, rated voltage (III/2): 320 V, contact surface: Tin, type of contact: Female connector, Number of rows: 1, Number of positions per row: 4, product range: MSTBT 2,5 HC/..-STP, pitch: 5 mm, connection method: Screw connection with tension sleeve, conductor/PCB connection direction: 0 °, plug-in system: POWER COMBICON 2,5, Locking: without, Assembly: without