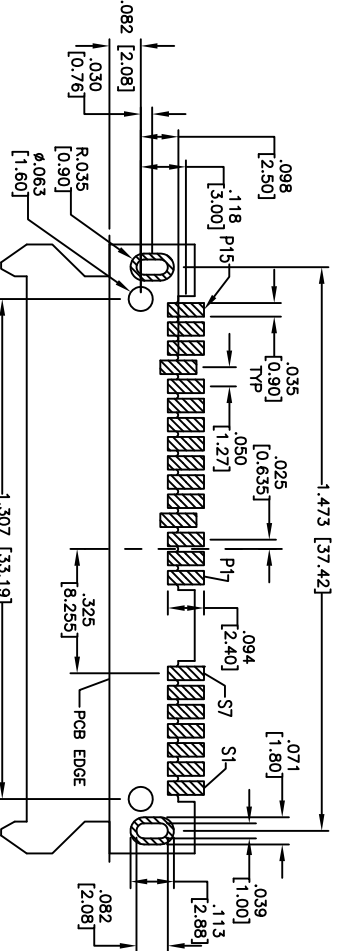
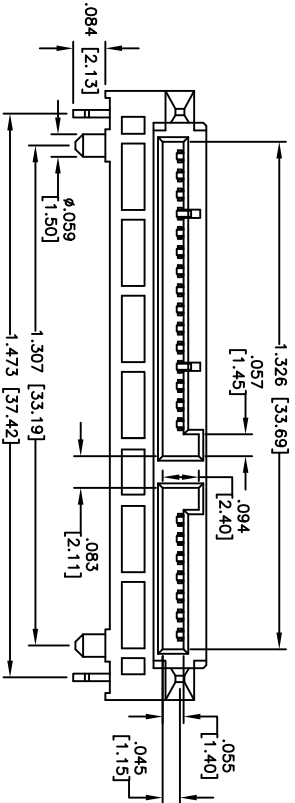
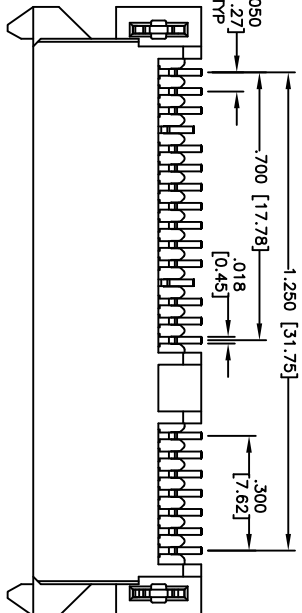
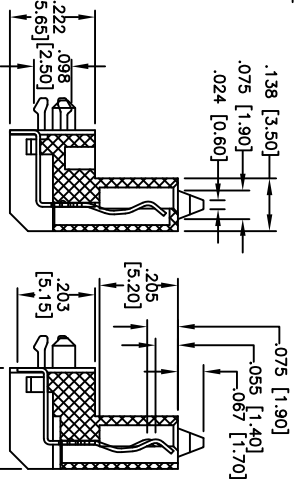


Rev	AWO #	Description	Date	Appr
-		RELEASED	9/03/09	

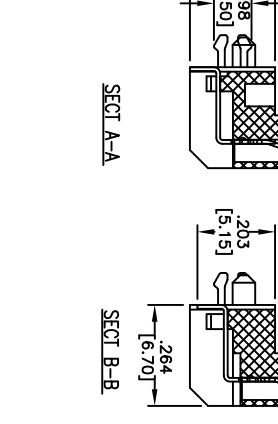
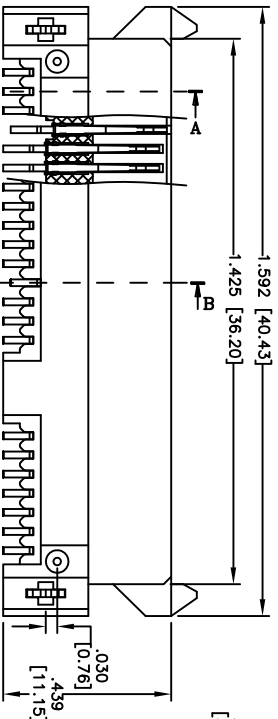
APPROVED: _____
 DATE: _____ TITLE: _____



RECOMMENDED PCB LAYOUT
(Top View)



Signal Segment	Power Segment
S1	P1
S2	P2
S3	P3
S4	P4
S5	P5
S6	P6
S7	P7
S8	P8
S9	P9
S10	P10
S11	P11
S12	P12
S13	P13
S14	P14
S15	P15
S16	P16
S17	P17
S18	P18
S19	P19
S20	P20
S21	P21
S22	P22
S23	P23
S24	P24
S25	P25
S26	P26
S27	P27
S28	P28
S29	P29
S30	P30



Signal Segment	Power Segment
S1	P1
S2	P2
S3	P3
S4	P4
S5	P5
S6	P6
S7	P7
S8	P8
S9	P9
S10	P10
S11	P11
S12	P12
S13	P13
S14	P14
S15	P15
S16	P16
S17	P17
S18	P18
S19	P19
S20	P20
S21	P21
S22	P22
S23	P23
S24	P24
S25	P25
S26	P26
S27	P27
S28	P28
S29	P29
S30	P30

SPECIFICATIONS:
 Material: Insulator: LCP, rated UL 94V-0
 Insulator color: Black
 Contacts: Phosphor Bronze
 Plating: Gold Flash over Nickel underplate on contact area, Tin over Copper underplate on solder tails.
 Operating voltage: 100 VAC max
 Current rating: 1.5 Amps max
 Contact resistance: 30 mohms max
 Insulation resistance: 1,000 Mohms min @ 500 VDC
 Dielectric withstanding voltage: 500 VAC for 1 minute
 Temperature Rating: Operating temperature: -55°C to +125°C
 Environmental: Lead free, RoHS compliant
 Recommended soldering temp: 260°C for 5 sec.



ADAM TECH
 909 Rahway Avenue, Union, NJ 07083
 Phone: 908-687-5000 Fax: 908-687-5710

TITLE	SATA CONNECTOR, 7P + 15P, 90°	
TITLE	SATA-H-PM-SMT	
SIZE	PART NO.	REV.
X	SATA-H-PM-SMT	
SCALE:	NTS	SHEET 1 OF 1

UNLESS OTHERWISE SPECIFIED ALL DIMENSIONS ARE INCHES [MM]	DATE
TOLERANCES: EXCEPT AS NOTED	9/03/09
INCHES	
.X ± .10	
.XX ± .020	
.XXX ± .015	
.XXX ± .015	
APPROVALS	
DRAWN	DY
CHECKED	
APPROVED	