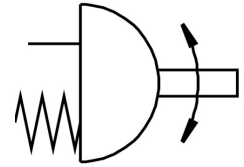


Quarter turn actuator DAPS-0030-090-RS2-F0507-T6

Part number: 553194

FESTO



Data sheet

Feature	Value
Size of valve actuator	0030
Flange hole pattern	F05 F07
Swivel angle	90 deg
End-position adjusting range at 0°	-1 deg ... 9 deg
End-position adjusting range at nominal swivel angle	81 deg ... 91 deg
Depth shaft connection	16.5 mm
Type code	DAPS
Information on the end-position adjusting range	One end position optionally adjustable
Standard connection for valve	ISO 5211
Cushioning	No cushioning
Mounting position	Any
Mode of operation	Single-acting
Design	Scotch yoke system
Position sensing	None
Closing direction	Clockwise closing
Symbol	00991266
Valve connection conforms to standard	VDI/VDE 3845 (NAMUR)
Safety integrity level (SIL)	Up to SIL 2 high demand mode Up to SIL 2 low demand mode
Connection pressure for spring force	0.35 MPa
Connection pressure for spring force	3.5 bar
Operating pressure	0.35 MPa ... 0.84 MPa
Operating pressure	3.5 bar ... 8.4 bar
Nominal operating pressure	0.56 MPa
Nominal operating pressure	5.6 bar
CE marking (see declaration of conformity)	as per EU explosion protection directive (ATEX)
Explosion prevention and protection	Zone 1 (ATEX) Zone 2 (ATEX) Zone 21 (ATEX) Zone 22 (ATEX)
ATEX category gas	II 2G
ATEX category for dust	II 2D
Type of ignition protection for gas	Ex h IIC T6...T3 Gb X
Type of (ignition) protection for dust	Ex h IIIC T85°C...T200°C Db X
Explosive ambient temperature	-50°C ≤ Ta ≤ +60°C
Operating medium	Compressed air as per ISO 8573-1:2010 [7:4:4]

Feature	Value
Information on operating and pilot media	Operation with oil lubrication possible (required for further use)
Corrosion resistance class (CRC)	3 - High corrosion stress
Ambient temperature	-50 °C ... 60 °C
Torque at nominal operating pressure and 0° swivel angle	37.6 Nm
Torque at nominal operating pressure and 50° swivel angle	20.7 Nm
Torque at nominal operating pressure and 90° swivel angle	31.3 Nm
Note about the torque	The actuator's operating torque must not be higher than the maximum permissible torque listed in ISO 5211, based on the size of the mounting flange and the coupling.
Spring return torque at 0° swivel angle	12.5 Nm
Spring return torque with 50° swivel angle	9.4 Nm
Spring return torque with 90° swivel angle	18.8 Nm
Spring force	2
Air consumption at 6 bar per cycle 0°-nominal swivel angle-0°	1.19 l
Product weight	1950 g
Shaft connection	T14
Pneumatic connection	G1/8
Note on materials	Contains paint-wetting impairment substances RoHS-compliant
Cover material	Wrought aluminum alloy
Seals material	FVMQ PTFE-reinforced
Housing material	Wrought aluminum alloy
Material of screws	High-alloy steel
Shaft material	High-alloy steel
Material number for shaft	1.4305