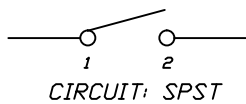


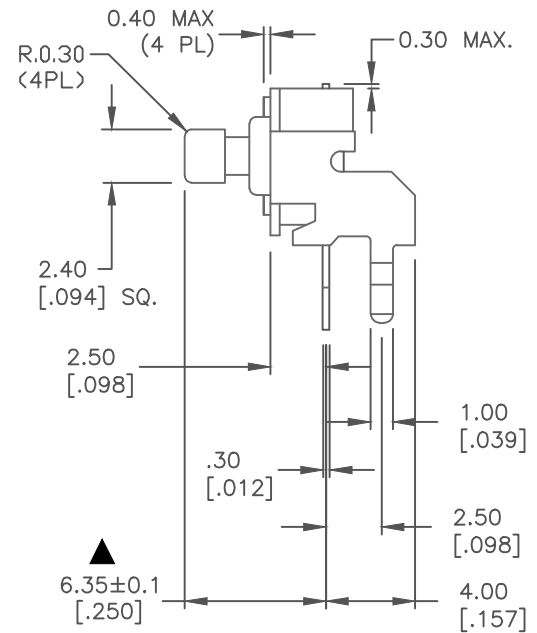
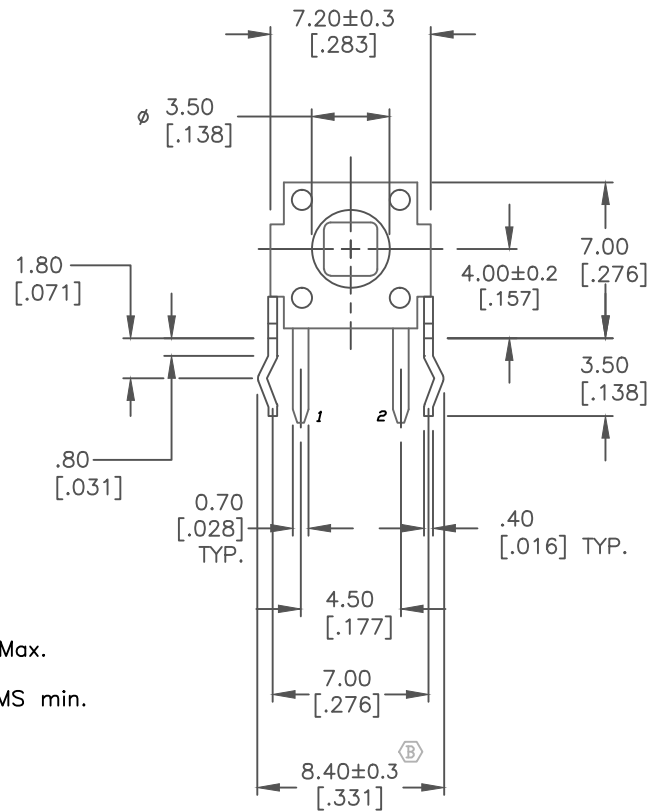
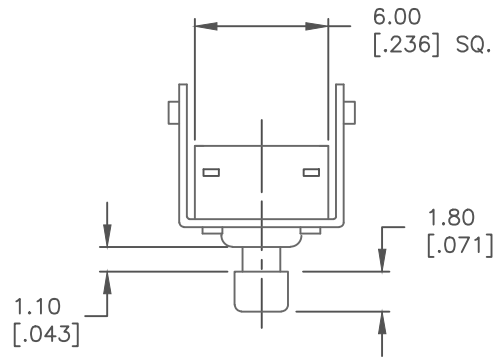
RECOMMENDED P.C.B. LAYOUT

SCALE 4:1



NOTES:

1. ALL DIMENSIONS IN MM [INCH]
2. GENERAL TOLERANCE: X.X=±0.4
X.XX=±0.25
3. TERM. NOS. FOR REFERENCE ONLY.
- ▲ 4. RATINGS: 12VDC, 50mA
- ▲ 5. OPERATING FORCE: 250±50gf
6. TRAVEL: 0.25±0.1mm
7. CONTACT RESISTANCE: 100 MILLI-OHMSMax.
8. DIELECTRIC STRENGTH: 250V RMS min.
9. INSULATION RESISTANCE: 100 Mega-OHMS min.
10. ELECTRICAL LIFE: 100,000 CYCLES min.
11. ▲ DENOTES CRITICAL PARAMETER
12. ACTUATOR COLOR: RED
13. 2002/95/EC (ROHS) COMPLIANT



TITLE					TL1105J F250 Q				
SCALE		DATE		DR		DWG		REV	
3:1		6/5/02		BLR		P020203		B	

B	18313	LEG TOLERANCE WAS +/- 0.1	11/12/08	BLR
A	12210	RELEASED FOR PRODUCTION	6/5/02	CB
REV.	PCR No.	DESCRIPTION	DATE	CHKD

THE INFORMATION CONTAINED IN THIS DOCUMENT IS PROPRIETARY TO E-SWITCH AND IS NOT TO BE COPIED OR TRANSFERRED