

PLEASE CHECK WWW.MOLEX.COM FOR LATEST PART INFORMATION

Part Number: [0930711004](#)
Status: **Active**
Overview: [rast_25_connector_system](#)
Description: 5.00mm (.197") Pitch Appli-Mate RAST 2.5 Header, Vertical, 3 Circuits, Reference K00, Glow Wire Compatible

Documents:

[Drawing \(PDF\)](#) [RoHS Certificate of Compliance \(PDF\)](#)

Agency Certification

CSA LR19980

General

Product Family PCB Headers
 Series [93071](#)
 Application Wire-to-Board
 Overview [rast_25_connector_system](#)
 Product Name RAST 2.5

Physical

Breakaway No
 Circuits (Loaded) 3
 Circuits (maximum) 3
 Color - Resin Natural
 Durability (mating cycles max) 10
 First Mate / Last Break No
 Flammability 94V-0
 Glow-Wire Compliant Yes
 Guide to Mating Part No
 Keying to Mating Part None
 Lock to Mating Part Yes
 Material - Metal Brass
 Material - Plating Mating Tin
 Material - Plating Termination Tin
 Material - Resin Nylon
 Number of Rows 1
 Orientation Vertical
 PCB Thickness Recommended (in) 0.059 In
 PCB Thickness Recommended (mm) 1.50 mm
 Packaging Type Carton
 Pitch - Mating Interface (in) 0.196 In
 Pitch - Mating Interface (mm) 5.00 mm
 Polarized to PCB Yes
 Stackable No
 Surface Mount Compatible (SMC) No
 Temperature Range - Operating -20C TO +120C
 Termination Interface: Style Through Hole

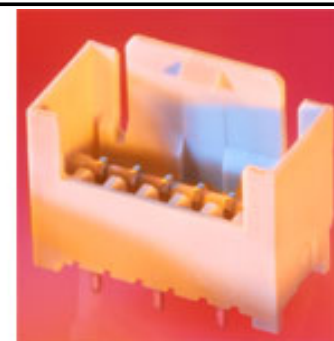
Electrical

Current - Maximum per Contact 6A
 Voltage - Maximum 250V

Material Info

Reference - Drawing Numbers

Sales Drawing SD-93071-001



Series

image - Reference only

EU RoHS

**ELV and RoHS
 Compliant
 REACH SVHC
 Not Reviewed
 Halogen-Free
 Status**

China RoHS



**Need more information on product
 environmental compliance?**

Email productcompliance@molex.com
 For a multiple part number RoHS Certificate of
 Compliance, [click here](#)

Please visit the [Contact Us](#) section for any
 non-product compliance questions.

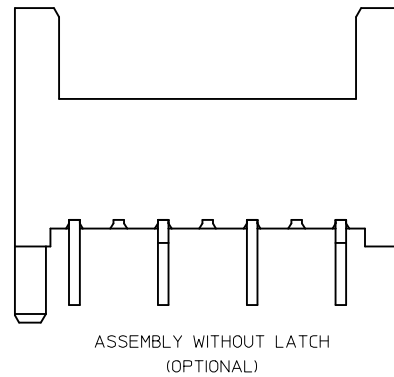
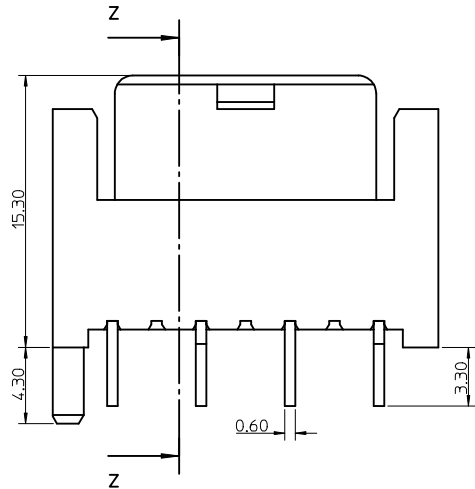
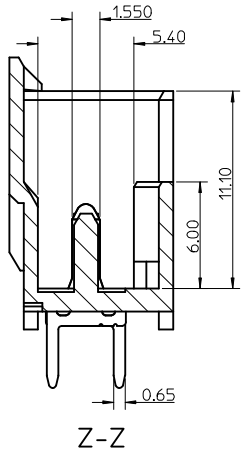
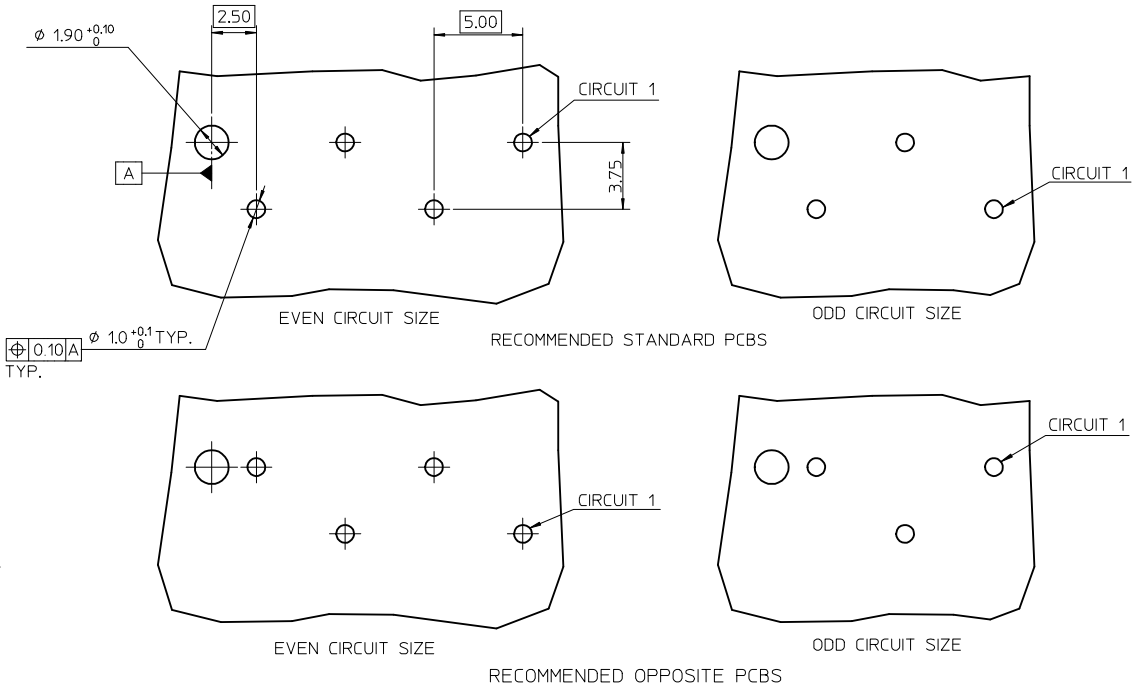
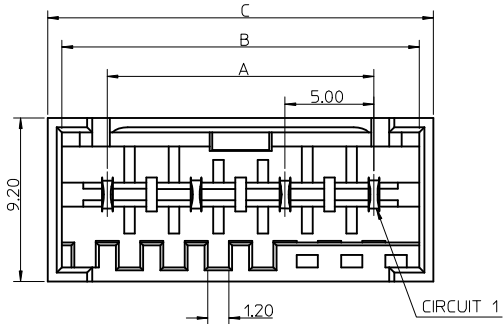
Search Parts in this Series

93071Series

This document was generated on 05/26/2010

PLEASE CHECK WWW.MOLEX.COM FOR LATEST PART INFORMATION

CCT	A	B	C
2	5.0	10.1	11.7
3	10.0	15.1	16.7
4	15.0	20.1	21.7
5	20.0	25.1	26.7
6	25.0	30.1	31.7
7	30.0	35.1	36.7
8	35.0	40.1	41.7



NOTES:

- MATERIAL: HOUSING - PA66 25% G/F, UL94 V-0
COLOUR: NATURAL
TERMINAL - BRASS
PLATING - 3-7um Sn over 1.27um Min Ni
- PARTS PACKED AS PER PK-93070-001
- PRODUCT SPECIFICATION: PS-99039-0040
- RECOMMENDED PCB THICKNESS: 1.5+/-0.14mm

ADD PART NUMBERS		QUALITY SYMBOLS	GENERAL TOLERANCES (UNLESS SPECIFIED)		DIMENSION STYLE		SCALE	DESIGN UNITS	THIRD ANGLE PROJECTION	
EC NO:	DATE		mm	INCH	MM ONLY	5:1	METRIC			
E2010-0124	2009/10/07	▽=0 ▽=0	4 PLACES ±---	±---	DRAWN BY	DATE	TITLE	RAST 2.5 APPLI-MATE VERTICAL MALE HEADER 5MM PITCH		
DRWN:TTOURISH	2009/10/08		3 PLACES ±0.05	±---	TTOURISH	2008/03/18				
CHKD:BRUTLE	2009/10/08		2 PLACES ±0.10	±---	CHECKED BY	DATE				
APPR:BMAGUIRE	2009/10/08		1 PLACE ±0.20	±---	BRUTLE	2008/03/18				
			ANGULAR ± 2 °		APPROVED BY	DATE				
DRAFT WHERE APPLICABLE MUST REMAIN WITHIN DIMENSIONS					BMAGUIRE	2008/03/18	MATERIAL NO.		DOCUMENT NO.	
					SEE SHEET 2		Molex		SD-93071-001	
					SIZE A2		THIS DRAWING CONTAINS INFORMATION THAT IS PROPRIETARY TO MOLEX INCORPORATED AND SHOULD NOT BE USED WITHOUT WRITTEN PERMISSION			

2 CIRCUIT					
MOLEX PART NO.	BLOCKED POSITION KEYS	TERMINAL VOID POSITION	CONFIGURATION	LATCH	CCT 1 POSITION
93071-0001	NONE	2		YES	STANDARD
93071-0002	d	2		YES	STANDARD
93071-0003	b	2		YES	STANDARD
93071-0004	b d	2		YES	STANDARD
93071-0005	a c	2		YES	STANDARD
93071-0006	a d	2		YES	STANDARD
93071-0007	a	2		YES	STANDARD
93071-0008	a b	2		YES	STANDARD
93071-0009	b c	2		YES	STANDARD
93071-0010	c d	2		YES	STANDARD
93071-0011	a b c	2		YES	STANDARD
93071-0012	a c d	2		YES	STANDARD
93071-0013	b c d	2		YES	STANDARD
93071-0014	ALL	2		YES	STANDARD

3 CIRCUIT					
MOLEX PART NO.	BLOCKED POSITION KEYS	TERMINAL VOID POSITION	CONFIGURATION	LATCH	CCT 1 POSITION
93071-1001	NONE	2, 4		YES	STANDARD
93071-1002	a c d e	2, 4		YES	STANDARD
93071-1003	b c d e	2, 4		YES	STANDARD
93071-1004	c	2, 4		YES	STANDARD
93071-1005	d e f	2, 4		YES	STANDARD

4 CIRCUIT					
MOLEX PART NO.	BLOCKED POSITION KEYS	TERMINAL VOID POSITION	CONFIGURATION	LATCH	CCT 1 POSITION
93071-2001	NONE	2, 4, 6		YES	STANDARD
93071-2002	b c d e f h	2, 4, 6		YES	STANDARD
93071-2003	b c d e f g	2, 4, 6		YES	STANDARD
93071-2004	b c d f	2, 4, 6		YES	STANDARD

5 CIRCUIT					
MOLEX PART NO.	BLOCKED POSITION KEYS	TERMINAL VOID POSITION	CONFIGURATION	LATCH	CCT 1 POSITION
93071-3001	NONE	2, 4, 6, 8		YES	STANDARD

6 CIRCUIT					
MOLEX PART NO.	BLOCKED POSITION KEYS	TERMINAL VOID POSITION	CONFIGURATION	LATCH	CCT 1 POSITION
93071-4001	NONE	2, 4, 6, 8, 10		YES	STANDARD

7 CIRCUIT					
MOLEX PART NO.	BLOCKED POSITION KEYS	TERMINAL VOID POSITION	CONFIGURATION	LATCH	CCT 1 POSITION
93071-5001	NONE	2, 4, 6, 8, 10, 12		YES	STANDARD

8 CIRCUIT					
MOLEX PART NO.	BLOCKED POSITION KEYS	TERMINAL VOID POSITION	CONFIGURATION	LATCH	CCT 1 POSITION
93071-6001	NONE	2, 4, 6, 8, 10, 12, 14		YES	STANDARD

SEE SHEET 1 EC NO: E2010-0124 DRAWN: TOURISH CHKD: BRITTLE APPR: BMAGUIRE	2009/10/07 2009/10/08 2009/10/08	QUALITY SYMBOLS ▽=0 ▽=0	GENERAL TOLERANCES (UNLESS SPECIFIED) mm INCH 4 PLACES ±.05 ±.002 3 PLACES ±.05 ±.002 2 PLACES ±.10 ±.004 1 PLACE ±.20 ±.008 ANGULAR ± 2°	DIMENSION STYLE MM ONLY DRAWN BY DATE TOURISH 2008/03/18 CHECKED BY DATE BRITTLE 2008/03/18 APPROVED BY DATE BMAGUIRE 2008/03/18 MATERIAL NO.	SCALE 5:1 DESIGN UNITS METRIC THIRD ANGLE PROJECTION	RAST 2.5 APPLI-MATE VERTICAL MALE HEADER 5MM PITCH MOLEX INCORPORATED DOCUMENT NO. SD-93071-001 SHEET NO. 2 OF 2
	DRAFT WHERE APPLICABLE MUST REMAIN WITHIN DIMENSIONS			SEE CHARTS	THIS DRAWING CONTAINS INFORMATION THAT IS PROPRIETARY TO MOLEX INCORPORATED AND SHOULD NOT BE USED WITHOUT WRITTEN PERMISSION	
	SIZE 1					