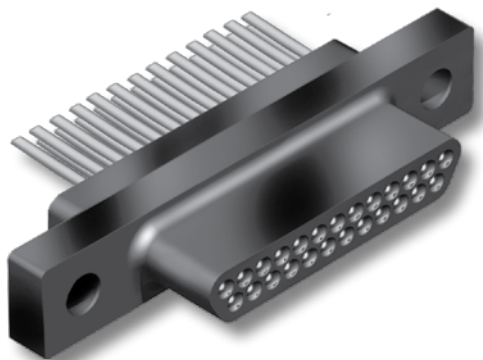


## Micro-D Plastic Shell Uninsulated Wire Pigtails



**Solder-Dipped or Gold Plated Wire** – These connectors feature TwistPin contacts and mil spec crimp termination to solid copper wire. High temperature liquid crystal polymer (LCP) housings are 30% glass-filled.

**Choose Gold Plated or Solder Dipped Wire** in #24 AWG (.020 inch diameter), #25 AWG (.018 inch diameter) or #26 AWG (.016 inch diameter).

**MWD Plastic Micro-D's** are non-environmental and are smaller and lighter weight than metal shell versions.

### HOW TO ORDER MWD PLASTIC UNINSULATED WIRE PIGTAILS

Series	Contact Layout	Contact Type	Wire Gage (AWG)	Wire Type	Wire Finish	Wire Length Inches	Hardware
<b>MWDL</b> MWD Series ("L" designates LCP thermoplastic housing)	<b>9</b>	<b>P</b> – Pin <b>S</b> – Socket	<b>4</b> – #24 <b>5</b> – #25 <b>6</b> – #26	<b>C</b> Single Strand Copper	<b>3</b> Solder Dipped (63/37 SnPb)	<b>.125</b>	<b>B</b>
	<b>15</b>					<b>.250</b>	<b>P</b>
	<b>21</b>					<b>.375</b>	<b>M</b>
	<b>25</b>					<b>.500</b>	<b>M1</b>
	<b>31</b>					<b>.750</b>	<b>S</b>
	<b>37</b>					<b>1.000</b>	<b>S1</b>
	<b>51</b>					<b>2.000</b>	
Wire Length In Inches. ".500" Specifies Half Inch.							
<b>Sample Part Number</b>							
<b>MWDL</b>	<b>– 31</b>	<b>P</b>	<b>– 5</b>	<b>C</b>	<b>4</b>	<b>– .250</b>	<b>B</b>

## K

### MICRO-D MOUNTING HARDWARE

B	P	M	M1	S	S1
<b>Thru-Hole</b> Order Hardware Separately	<b>Jackpost</b> Removable Includes Nut and Washer	<b>Jackscrew</b> Hex Head Removable E-ring	<b>Jackscrew</b> Hex Head Removable E-ring Extended	<b>Jackscrew</b> Slot Head Removable E-ring	<b>Jackscrew</b> Slot Head Removable E-ring Extended

# Micro-D Plastic Shell Uninsulated Wire Pigtails

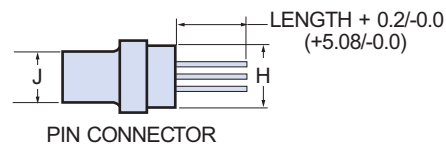
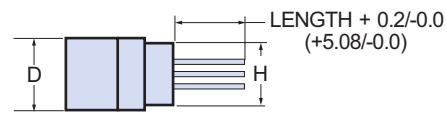
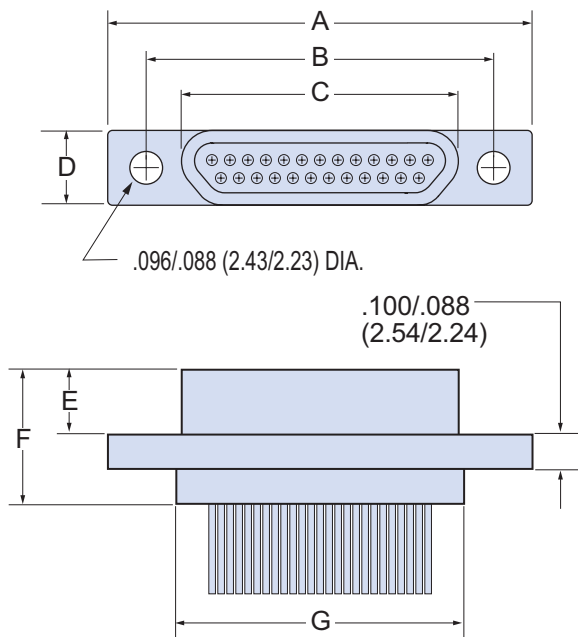


## PERFORMANCE SPECIFICATIONS

Current Rating	3 AMP
DWV	600 VAC Sea level
Insulation Resistance	5000 Megohms Minimum
Contact Resistance	8 Milliohms Maximum
Operating Temperature	-55° C. to +150° C.
Shock, Vibration	50 g., 20g.
Mating Force	(10 Ounces) X (# of Contacts)

## MATERIALS AND FINISHES

Connector Shell	Liquid Crystal Polymer (LCP)
Insulator	Liquid Crystal Polymer (LCP)
Interfacial Seal	Flourosilicone Rubber, Blue
Pin Contact	Beryllium Copper Gold over Nickel Plating
Socket Contact	Copper Alloy Gold Over Nickel Plating
Hardware	300 Series Stainless Steel
Encapsulant	Epoxy Resin Hysol EE4215



## MICRO-D PLASTIC SHELL UNINSULATED WIRE PIGTAIL DIMENSIONS

Layout	A Max.		B		C Max.		D Max.		E Max.		F Max.		G Max.		H Max.		J Max.	
	In.	mm.	In. ±.003	mm. ±0.08	In.	mm.	In.	mm.	In.	mm.	In.	mm.	In.	mm.	In.	mm.	In.	mm.
9P	.785	19.94	.565	14.35	.292	7.42	.218	5.54	.202	5.13	.395	10.03	.408	10.36	.173	4.39	.139	3.53
9S	.785	19.94	.565	14.35	.380	9.65	.218	5.54	.185	4.70	.375	9.53	.408	10.36	.173	4.39		
15P	.935	23.75	.715	18.16	.442	11.23	.218	5.54	.202	5.13	.395	10.03	.558	14.17	.173	4.39	.139	3.53
15S	.935	23.75	.715	18.16	.530	13.46	.218	5.54	.185	4.70	.375	9.53	.558	14.17	.173	4.39		
21P	1.080	27.43	.865	21.97	.592	15.04	.218	5.54	.202	5.13	.395	10.03	.708	17.98	.173	4.39	.139	3.53
21S	1.080	27.43	.865	21.97	.680	17.27	.218	5.54	.185	4.70	.375	9.53	.708	17.98	.173	4.39		
25P	1.185	30.01	.965	24.51	.692	17.58	.218	5.54	.202	5.13	.395	10.03	.808	20.52	.173	4.39	.139	3.53
25S	1.185	30.01	.965	24.51	.780	19.81	.218	5.54	.185	4.70	.375	9.53	.808	20.52	.173	4.39		
31P	1.335	33.91	1.115	28.32	.842	21.39	.218	5.54	.202	5.13	.395	10.03	.958	24.33	.173	4.39	.139	3.53
31S	1.335	33.91	1.115	28.32	.930	23.62	.218	5.54	.185	4.70	.375	9.53	.958	24.33	.173	4.39		
37P	1.485	37.72	1.265	32.13	.992	25.20	.218	5.54	.202	5.13	.395	10.03	1.108	28.14	.173	4.39	.139	3.53
37S	1.485	37.72	1.265	32.13	1.080	27.43	.218	5.54	.185	4.70	.375	9.53	1.108	28.14	.173	4.39		
51P	1.435	36.45	1.215	30.86	.942	23.93	.260	6.60	.202	5.13	.395	10.03	1.058	26.87	.220	5.59	.182	4.62
51S	1.435	36.45	1.215	30.86	1.030	26.16	.260	6.60	.185	4.70	.375	9.53	1.058	26.87	.220	5.59		