

# LX Series

## 5250 Power Control Series

The 5250 Power Control Series from MRV Communications delivers AC power solutions combining intelligent power distribution and remote power control. A key element of MRV's Out-of-Band Network solutions, is providing a powerful, cost-effective approach for remote networks and systems to ensure minimal operational downtime and eliminate site visits.

### Simple, Secure Remote Network Operations

The 5250 Power Control Series allows administrators to remotely power-on, power-off or reboot equipment and monitor power consumption. The 5250 models are accessible through MRV's LX Series Console Servers with enhanced security capabilities, including SSH v2, SNMP V3, Radius, SecurID, TACACS+, and are FIPS 140 certified. The LX Series provides management through an easy to use browser-based GUI, extensive command line interface, and MRV's SNMP based MegaVision management platform.

The LX Series features allows sophisticated site specific power management automation. The Trigger/Action feature of the LX Series allows site administrators to easily automate physical and security infrastructure control. Additional applications include controlling power access for lab automation, turning on additional air conditioning when needed, or controlling individual power outlets by department or scheduled activity.

### Key Features

- Power cycle individual power outlets to remotely reboot servers and network devices, anywhere in the world. Or, power-off unused power receptacles
- High Power Distribution: 120V, 208V, 240V and three-phase power options. 20 or 30-Amp power input feed
- 8, 16, 24 or 32 ports
- Vertical or horizontal mounting models
- Group outlets by name, within a unit, or across multiple units
- Access controlled through standard security infrastructure, including Radius, SecurID, TACACS+, LDAP, or local database
- Power-up Sequencing: Prevent an in-rush power overload
- Input Current Monitor: Measure the aggregate current draw on each power circuit monitor using LED digital display or remotely
- Automated alerts through SNMP, pager, SMS

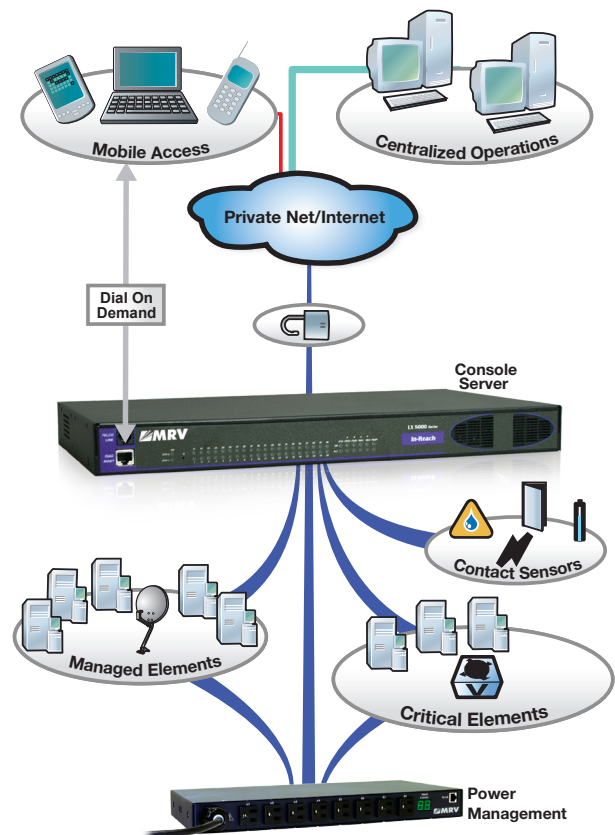


### Applications

- Enterprise data centers
- Remote/branch offices
- Test and development labs
- Utilities

### Benefits

- Combine power distribution and remote power management
- Single management interface for service port management and remote power control
- Easy to use graphical browser interface, Command Line Interface and SNMP based management options
- Industry leading security features, including Radius, SecurID, TACACS+, and more.
- Only remote power management vendor to support US government FIPS 140 security standard.



Datasheet

Model Number	Outlets	Amps	Outlet Type	Input Voltages	Input Type	Dimensions
LX-5250-8H1C20	8	20A	NEMA 5-20R	100-120V 50-60Hz	IEC 60320/C20 Inlet	1.75" x 17" x 7"
LX-5250-8H1L30	8	30A	NEMA 5-20R	100-120V 50-60Hz	NEMA L5-30P Cordset	1.75" x 17" x 7"
LX-5250-8H2C20	8	20A	IEC 60320/C13	200-240V 60Hz	IEC 60320/C20 Inlet	1.75" x 17" x 7"
LX-5250-8H2L30	8	30A	IEC 60320/C13	200-240V 60Hz	NEMA L6-30P Cordset	1.75" x 17" x 7"
LX-5250-16V1C20	16	20A	NEMA 5-20R	100-120V 50-60Hz	IEC 60320/C20 Inlet	44.5" x 1.75" x 3.0"
LX-5250-16V1L30	16	30A	NEMA 5-20R	100-120V 50-6-Hz	NEMA L5-30P Cordset	44.5" x 1.75" x 3.0"
LX-5250-16V2C20	16	20A	IEC 60320/C13	208-240V 60Hz	IEC 60320/C20 Inlet	49.5" x 1.75" x 3.0"
LX-5250-16V2L30	16	30A	IEC 60320/C13	208-240V 60Hz	NEMA L6-30P Cordset	49.5" x 1.75" x 3.0"
LX-5250-24V2C20	24	20A	IEC 60320/C13	208-240V 60Hz	IEC 60320/C20 Inlet	69.0" x 1.75" x 3.0"
LX-5250-24V2L30	24	30A	IEC 60320/C13	208-240V 60Hz	NEMA L6-30P Cordset	69.0" x 1.75" x 3.0"
LX-5250-24VYL20	24	20A	IEC 60320/C13	3-Phase 208V 60Hz	NEMA L21-20P Cordset	69.0" x 1.75" x 3.0"
LX-5250-24VYL30	24	30A	IEC 60320/C13	3-Phase 208V 60Hz	NEMA L21-30P Cordset	69.0" x 1.75" x 3.0"
LX-5250-32V1C20	32	20A	NEMA 5-20R	100-120V 50-60Hz	IEC 60320/C20 Inlet	63.5" x 3.5" x 2.25"
LX-5250-32V1L30	32	30A	NEMA 5-20R	100-120V 50-60Hz	NEMA L5-30P Cordset	63.5" x 3.5" x 2.25"
LX-5250-32V2C20	32	20A	IEC 60320/C13	208-240V 60Hz	IEC 60320/C20 Inlet	63.5" x 3.5" x 2.25"
LX-5250-32V2L30	32	30A	IEC 60320/C13	208-240V 60Hz	NEMA L6-30P Cordset	63.5" x 3.5" x 2.25"

European Models - RoHS Compliant

LX-5250-8HEC20	8	16A	IEC 60320/C13	230V 50-60Hz	IEC 60320/C20 Inlet	1.75" x 17" x 7"
LX-5250-16VEC20	16	16A	IEC 60320/C13	230V 50/60Hz	IEC 60320/C20 Inlet	49.5" x 1.75" x 3.0"
LX-5250-16VEP32	16	32A	IEC 60320/C13	230V 50/60Hz	IEC 60309 Cordset	49.5" x 1.75" x 3.0"
LX-5250-24VEC20	24	16A	IEC 60320/C13	230V 50-60Hz	IEC 60320/C20 Inlet	69.0" x 1.75" x 3.0"
LX-5250-24VEP32	24	32A	IEC 60320/C13	230V 50/60Hz	IEC 60309 Cordset	69.0" x 1.75" x 3.0"
LX-5250-32VEC20	32	16A	IEC 60320/C13	230V 50-60Hz	IEC 60320/C20 Inlet	63.5" x 3.5" x 2.25"

Specifications	
Network Interface	10/100 BaseT Ethernet
Serial Interface	RS-232, modular RJ-45
Operating Temperature	32° to 122° F (0° to 50° C)
Storage Temperature	-40° to 185° F (-40° to 85° C)
Humidity	10 to 90%, non-condensing
Certifications	FCC Part 15, Class A US / Canada (cTUVus mark) to UL 60950-1:2003 and CAN/CSA 22.2 No. 60950-1-03 European Union (TUVGS mark) to EN 60950-1:2001 CE EMC-EN55022 Class A, EN 55024

Power Inlet Cord Options	
LX-5250-PCORD1	IEC 60320/C19 - NEMA L6-20P, 10'
LX-5250-PCORD2	IEC 60320/C19 - SHUKO 10'
LX-5250-PCORD3	IEC 60320/C19 - IEC 60309 (BS4343, CEE17) 16/20A BLUE (UK Commando)
LX-5250-PCORD4	IEC 60320/C19 - BS1363 13A (UK) 10'
LX-5250-PCORD5	IEC 60320/C19 - 5-15P (15A Straight -Blade) 10'
LX-5250-PCORD6	IEC 60320/c19 - 5-20P (20A Straight-Blade) 10'
LX-5250-PCORD7	IEC 60320/C19 - L5-20P (20A Twist-Lock) 10'

MRV has more than 50 offices throughout the world. Addresses, phone numbers, and fax numbers are listed at [www.mrv.com](http://www.mrv.com). Please e-mail us at [sales@mrv.com](mailto:sales@mrv.com) or call us for assistance.

MRV (West Coast USA)  
20415 Nordhoff St.  
Chatsworth, CA 91311  
800-338-5316  
818-773-0900

MRV (East Coast USA)  
295 Foster St.  
Littleton, MA 01460  
800-338-5316  
978-952-4700

MRV (International)  
Business Park Moerfelden  
Waldeckerstrasse 13  
64546 Moerfelden-Walldorf  
Germany  
Tel. (49) 6105/2070  
Fax. (49) 6105/207-100



All statements, technical information and recommendations related to the products herein are based upon information believed to be reliable or accurate. However, the accuracy or completeness thereof is not guaranteed, and no responsibility is assumed for any inaccuracies. Please contact MRV Communications for more information. MRV Communications and the MRV Communications logo are trademarks of MRV Communications, Inc. Other trademarks are the property of their respective holders.